

4

3

2

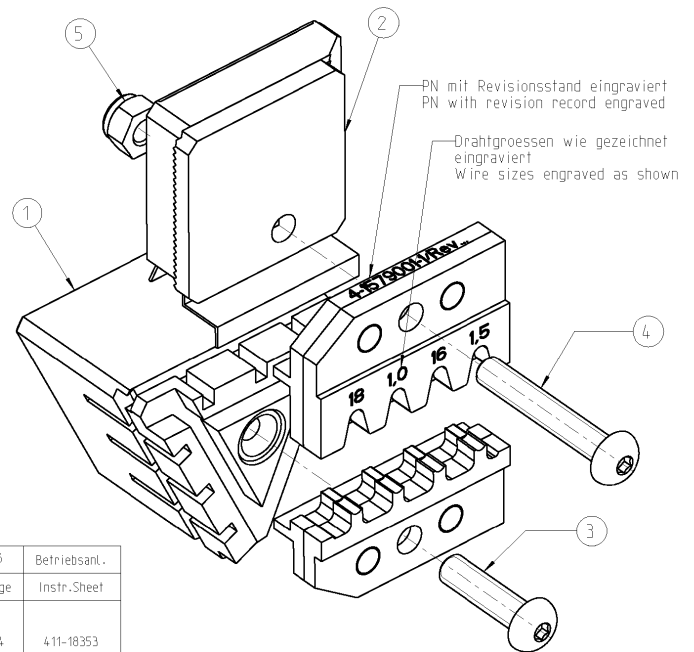
1

THIS DRAWING IS UNPUBLISHED. RELEASED FOR PUBLICATION 2005
 © COPYRIGHT 2005 BY TYCO ELECTRONICS CORPORATION. ALL RIGHTS RESERVED.

LOC	DIST	REVISIONS				
P	LTR	DESCRIPTION	DATE	DWN	APVD	
A1	-					

Matrize in Kombination mit Ergocrimp Basishandzange PN 539635-1 verwenden
 Use die in combination with Ergocrimp basis hand tool PN 539635-1

Matrize im Karton mit Bedienungsanleitung 411-18353 verpackt
 Die packed in a cardboard with instruction sheet 411-18353



4-1579001-1	1	6-0744001-1	Instruction Sheet	Bedienungsanleitung	6
	1	0-0519024-2	Nut M4 DIN 985	Mutter M4 DIN 985	5
	1	1-0519151-3	Screw M4x25	Schraube M4x25	4
	1	1-0519151-1	Screw M4x16	Schraube M4x16	3
	1	0-1579003-7	Locator Assembly	Drahtanschlag	2
	1	0-1579003-6	Contact Locator	Kontaktpositionierer	1
QTY		PN	Description	Benennung	Pos.

Kontakt	DGB (mm ²)	Drahtcrimp / Wire Crimp		Isolationscrimp/Insulationcrimp		Isol.Ø	Betriebsanz.
Contact	AWG	Höhe/Height mm	Breite/W idth mm	Höhe/Height mm	Breite/W idth mm	Ins.Range	Instr.Sheet
1418763 / 1452660	18	1.05 ±0.05	1.78	2.45 ±0.1	2.45 (2.55max.)	1.9-2.4	411-18353
	1.0	1.10 ±0.05		2.45 ±0.1			
	1.6	1.26 ±0.05		2.55 ±0.1			
	1.5	1.31 ±0.05		2.55 ±0.1			

<small>THIS DRAWING IS A CONTROLLED DOCUMENT FOR TYCO ELECTRONICS CORPORATION IT IS SUBJECT TO CHANGE AND THE CONTROLLING ENGINEERING ORGANIZATION SHOULD BE CONTACTED FOR THE LATEST REVISION.</small>		DWN Ch.Witt	08MAY2006	tyco Electronics tyco Electronics AMP GmbH D - 64625 Bensheim
DIMENSIONS: mm		CHK	-	
TOLERANCES UNLESS OTHERWISE SPECIFIED: 0 PLC ±0.1 1 PLC ±0.1 2 PLC ±0.1 3 PLC ±0.1 4 PLC ±0.1 ANGLES ±0.5°		APVD	-	
MATERIAL - FINISH -		NAME		ERGOCRIMP-DIE SET MCP1.2 LL Ergocrimp Matrize MCP1.2 LL
SIZE CAGE CODE DRAWING NO		RESTRICTED TO		-
WEIGHT 200 g		A3	00779	G-4-1579001-1
CUSTOMER DRAWING		SCALE	2:1	SHEET 1 OF 1 REV A

AMP 1470-19 REV 31MAR2000

PRO/ENGINEER DRAWING