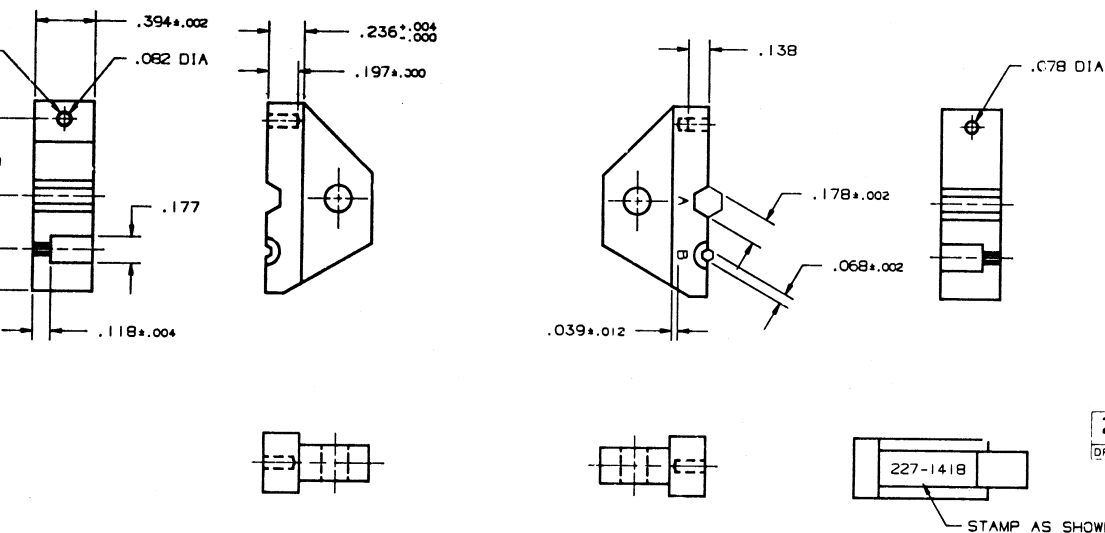


DO NOT SCALE THIS DRAWING

| REVISIONS | | | | |
|-----------|-------------------------------|----------|------------|-------|
| SYM | DESCRIPTION | DATE | E.C.O. NO. | APPR. |
| A | OFFICIAL ENG. RELEASE TO MFG. | 11/14/88 | 36043 | DR |



227-1418
DRAWING NUMBER/ISSUE
A

NOTES:

1. MATERIAL: CRIMPING DIES - TOOL STEEL.
HEAT TREAT TO ROCKWELL C52-60
2. FINISH: FINISH ON CRIMPING SURFACES
32 MICROINCHES MAX. BLACK OXIDE
COATING PER MIL-C-13924.
3. USE WITH 227-987 HANDLE.
4. REF: MIL CRIMP TOOL DIE SET EQUIVALENT
IS 227-1221-09.
5. USE TO CRIMP ON CABLES RG122, RG180,
RG195, RG174, RG179, RG187, RG188, RG316
AND ESSEX 21-597.

DIES ALIKE IF NOT OTHERWISE STATED. MARKING
ALIGNED WITH CAVITIES STAMPED LETTERS A & B.
TEXT HEIGHT 1/16.

.002 R
TYP

| PART NO. | QUAN | UOM | REV | DESCRIPTION | CODE | FINISH |
|------------------|------|-----|-----|-------------|------|--------|
| LIST OF MATERIAL | | | | | | |

REMOVE ALL BURRS, BREAK CORNERS
AND SHARP EDGES TO MAXIMUM
UNLESS OTHERWISE SPECIFIED.

NOTICE - These drawings, specifications, or other
data (1) are, and remain, the property of Amphenol
Corp. (2) must be returned upon request, and (3) are
confidential and are not to be disclosed to any person
other than those to whom they are given in writing.
Corp. The furnishing of these drawings, specifications,
notes, or other data by Amphenol Corp. or by any
other person to anyone for any purpose not to be re-
produced or transmitted or otherwise used in any manner
including granting rights or permitting such holder or
any other person to manufacture, use or sell any article,
set, process or design, patented or unpatented, that
may in any way be related to or dictated by said
drawings, specifications or other data.

| | | | | | | |
|---------------|---------|--|-------------------|----------|-----------|---|
| NEXT ASSY | USED ON | UNLESS OTHERWISE SPECIFIED DIMENSIONS ARE IN INCHES. TOLERANCES NOT OTHERWISE SPECIFIED ARE: | DRAWN BY | DATE | TITLE | Amphenol Corporation RF/Microwave Operations Danbury, Conn. U.S.A. |
| NOTE 1 | | 3 PLACE DECIMAL 1.018 (.025 mm) | TERRI ALBERA | 11-2-88 | DIE SET | |
| NOTE 2 | | 2 PLACE DECIMAL 1.005 (.0127 mm) | D. ROYCE | 12-9-88 | | |
| SPECIFICATION | | REFERENCE DRAWING NO. | D. ROYCE | 12-9-88 | SCALE 2:1 | |
| FINISH | | 4100-1947 | QUALITY ASSURANCE | DATE | SHEET OF | |
| | | | DATE | DATE | ISSUE | |
| | | | 12/14/88 | 12/14/88 | 74868 | C 227-1418 A |

11

11

98

8.5"

11"

17"