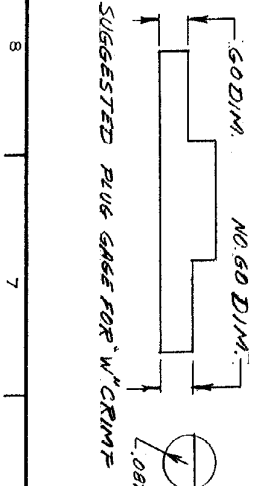


DIM	GO	NO GO
"O"	.194	.202
"W"	.0595	.0655



REV	REVISION RECORD	DR	CHK	DATE
G	REVISED	RX	DR	1/14/61
F	REVISED	AUE	DR	1/14/61
E	REVISED	RE	DR	1/14/61
D	REVISED	LA	DR	1/14/61
C	REVISED	LA	DR	1/14/61
B	REVISED	LA	DR	1/14/61
A	REVISED	LA	DR	1/14/61

NO.	DESCRIPTION	REQUIRED PER ASSEMBLY
1		
2		
3		
4		
5		
6		
7		

QTY	DESCRIPTION	REMARKS
2	A 21045-6 RING - RETAINING	
1	A 300449 PIN - RETAINING	
1	A 39364 SPRING	
1	A 39366 COLLAR	
2	A 300432 PIN - RETAINING	
2	A 304191 PIN - RETAINING	
6	A 21045-3 RING - RETAINING	

NAME: **AMP**
 MATERIAL AND FINISH: **AMP**
 WIRE - GANSE - INSULATION: **AMP**
 TOLERANCE EXCEPT SCALE: **AMP**
 TO BE USED ± 1" 0

Plug Gage dimensions apply when tool is bottomed but not under pressure. For replacement of parts other than listed, tool should be returned to our factory to insure proper Certi-Crimp adjustment.