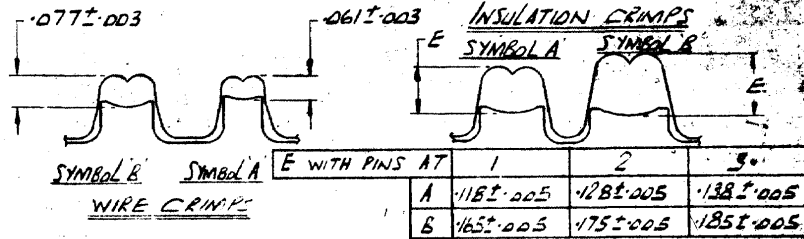


NOTES:

1. FOR REPLACEMENT OF PARTS OTHER THAN ITEMISED, TOOL SHOULD BE SENT TO OUR TOOL REPAIR DIVISION TO ENSURE PROPER CERTI-CRIMP RATCHET ADJUSTMENT.
2. TOOL TO BE GAUGED WHEN HANDLES ARE CLOSED BUT NOT UNDER PRESSURE.



ENLARGED VIEWS ON CRIMPS SCALE: 4:1

NO.	PART NO.	DESCRIPTION	QTY
7	39207	ADJUSTMENT PIN	1
6	300432	PIN	2
5	21045-3	RETAINING RING	4
4	21045-6	RETAINING RING	2
3	300449	PIN	1
8	39366	COLLAR	1
1	39364	SPRING	1

CRIMP SYMBOL	TERMINAL NUMBER STRIP	L.P.	WIRE SIZE	INS. SIZE
A	154718	341002	0.7-2.0mm ²	094-126
B	154717	341001	2.5-4.0mm ²	142-169

© AMP OF GREAT BRITAIN LTD 1977		CUSTOMER COPY REFERENCE ONLY	
MATERIAL AND FINISH		AMP of Great Britain Ltd	
WIRE - RANGE - INSULATION		TYPE	
0.7 - 4.0mm ²		E	
TOLERANCE EXCEPT AS NOTED		SCALE	
± 0.1% (DIM) ± 1%		1:1	
REVISION RECORD		LOC	
DR		E B	
CHK		NO	
DATE		625651	
DRAWN		NAME	
1977		DOUBLE ACTION HAND TOOL	
		TYPE E	