

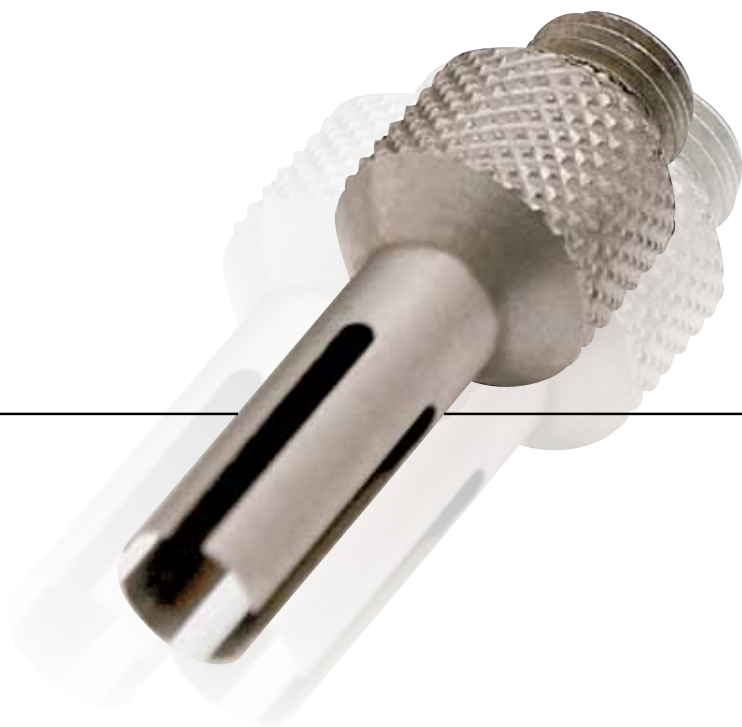
SECTION 14

# INSTALLATION AND ASSEMBLY TOOLS



For standard, High Density  
and Combination D-SUB  
Connector series

CONEC offers a variety of special tools to facilitate the reliable, rational assembly of contacts and connectors in its line of input/output connectors. These tools are practice-proven and ensure the optimal handling of our products.



For technical support and handling technic  
please contact the factory.

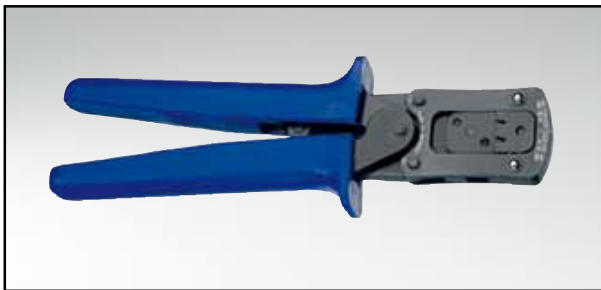




DESCRIPTION \_\_\_\_\_

**Installing tool**  
for D-SUB High Density contacts

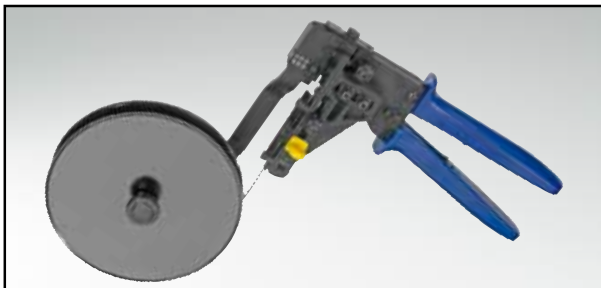
**Part Number**            360x10339x



DESCRIPTION \_\_\_\_\_

**Crimp tool**  
for D-SUB standard stamped and formed contacts

**Part Number**            360 X 10079 X



DESCRIPTION \_\_\_\_\_

**Spool Crimp tool**  
for D-SUB stamped and formed contacts

**Part Number**            360 X 10069 X



DESCRIPTION \_\_\_\_\_

**Insertion and extraction tool**  
for D-SUB crimp signal contacts

**Part Number**            360 X 12009 X



**DESCRIPTION** \_\_\_\_\_

**Hand Crimp tool** for high power contacts

**Part Number**            360 X 10409 X



**DESCRIPTION** \_\_\_\_\_

**Insert** for above hand crimp tool

**Part Number**            360 X 20029 X



**DESCRIPTION** \_\_\_\_\_

**Extraction tool**  
for D-SUB coaxial, high power and high voltage contacts  
for DIN EN 60603-2 high power and coaxial contacts

**Part Number**            360 X 10219 X

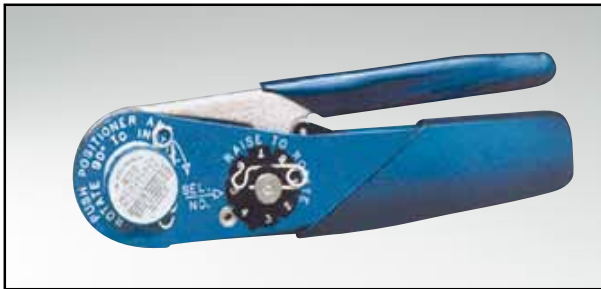


**DESCRIPTION** \_\_\_\_\_

**Hand Crimp tool**  
for high power contact (solder / crimp)

**Part Number**            360 X 12269 X





DESCRIPTION \_\_\_\_\_

**Hand Crimp tool**

for coaxial contacts (inner conductor) and D-SUB signal crimp contacts standard and High Density (Inserts must be ordered separately)

Part Number 360 X 10329 X



DESCRIPTION \_\_\_\_\_

Inserts for above hand crimp tool

**Inserts for hand crimp tool  
for use with hand crimp tool 360 X 10329 X**

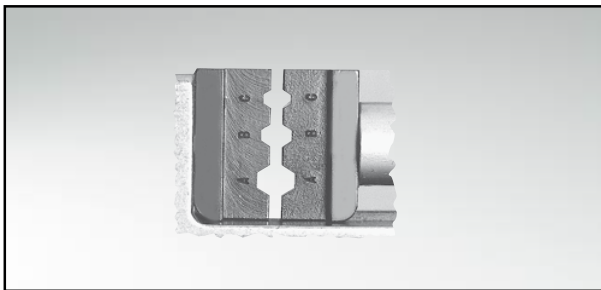
Plug Connector	Socket connector	Tool insert	Insert cavity
131 C 15019 X	132 C 15019 X	360 X 20039 X	depends on wire select cavity
131 C 15029 X	132 C 15029 X	360 X 20039 X	
131 J 21019 X	132 J 21019 X	360 X 11049 X	
131 J 21029 X	132 J 21029 X	360 X 11049 X	
131 J 21039 X	132 J 21039 X	360 X 11049 X	
131 J 23019 X	132 J 23019 X	360 X 11059 X	AWG Cavity
131 J 31019 X	132 J 31019 X	360 X 11049 X	24 → 5
131 J 31029 X	132 J 31029 X	360 X 11049 X	26 → 5
131 J 33019 X	132 J 33019 X	360 X 11059 X	28 → 4
			30 → 3
161 A 18009 X	162 A 18419 X	360 X 10629 X	
	162 A 18709 X	360 X 20069 X	
	162 A 18719 X	360 X 20069 X	



DESCRIPTION \_\_\_\_\_

**Hand Crimp tool**  
for coaxial contacts (outer conductor),  
(Inserts must be ordered separately)

**Part Number**            360 X 10519 X



DESCRIPTION \_\_\_\_\_

**Inserts for above hand crimp tool**

**Inserts for hand crimp tool coaxial contacts (outer conductor)  
for use with hand crimp tool 360X 10519 X**

Plug Connector	Socket connector	Tool insert	Insert cavity
131 J 20019 X	132 J 20019 X	360 X 11019 X	C
131 J 20029 X	132 J 20029 X	360 X 11019 X	B
131 J 20039 X	132 J 20039 X	360 X 11019 X	A
131 J 20049 X	132 J 20049 X	360 X 11029 X	A
131 J 20059 X	132 J 20059 X	360 X 11039 X	B
131 J 21019 X	132 J 21019 X	360 X 11019 X	B
131 J 21029 X	132 J 21029 X	360 X 11039 X	B
131 J 21039 X	132 J 21039 X	360 X 11029 X	A
131 J 22019 X	132 J 22019 X	360 X 11019 X	B
131 J 22029 X	132 J 22029 X	360 X 11019 X	C
131 J 22039 X	132 J 22039 X	360 X 11039 X	B
131 J 23019 X	132 J 23019 X	360 X 11019 X	B
131 J 30019 X	132 J 30019 X	360 X 11019 X	B
131 J 30029 X	132 J 30029 X	360 X 11019 X	B
131 J 31019 X	132 J 31019 X	360 X 11019 X	B
131 J 31029 X	132 J 31029 X	360 X 11019 X	A
131 J 33019 X	132 J 33019 X	360 X 11019 X	B



DESCRIPTION

Manually operated lever press

Part Number 360 X 12369 X

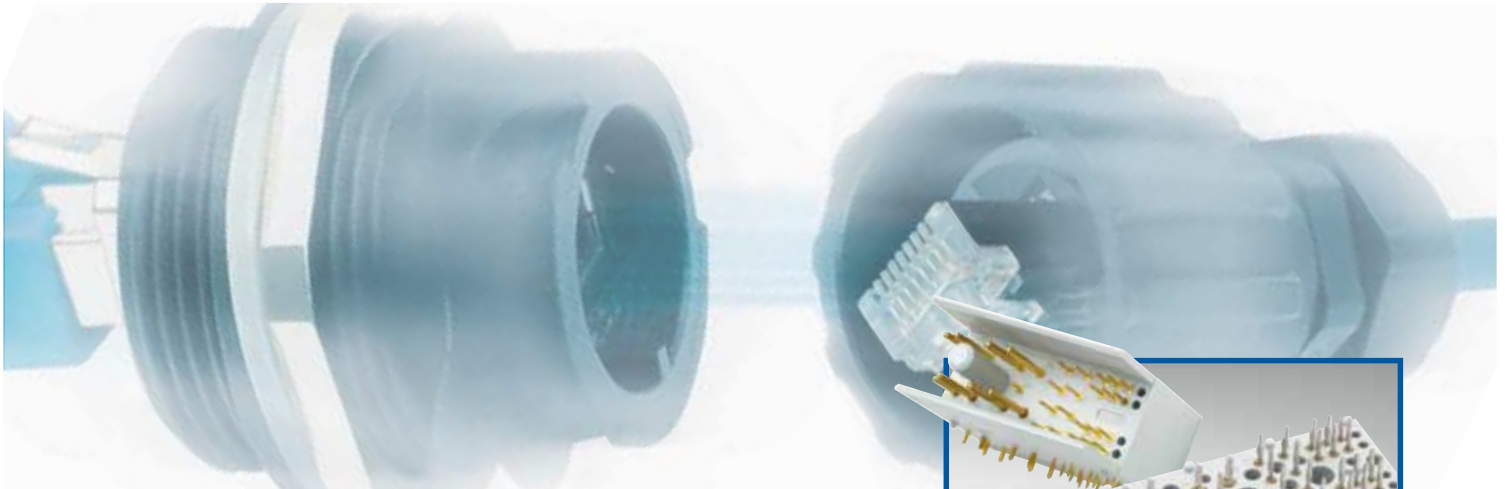


DESCRIPTION

PRESS IN TOOL SETS

Design	Type	Part Number
Combination D-SUB Connectors	2W2C	360 X 00159 X
Combination D-SUB Connectors	3W3	360 X 00169 X
Combination D-SUB Connectors	3W3C	360 X 00169 X
Combination D-SUB Connectors	5W5	360 X 00179 X
Combination D-SUB Connectors	8W8	360 X 00189 X
Plug Connector	9 pos. /15 pos.HD	360 X 15019 X
Plug Connector	15 pos. /26 pos.HD	360 X 15029 X
Plug Connector	25 pos. /44 pos.HD	360 X 15039 X
Plug Connector	37 pos. /62 pos.HD	360 X 15049 X
Plug Connector	50 pos. /78 pos.HD	360 X 15059 X
Socket Connector	9 pos. /15 pos.HD	360 X 15069 X
Socket Connector	15 pos. /26 pos.HD	360 X 15079 X
Socket Connector	25 pos. /44 pos.HD	360 X 15089 X
Socket Connector	37 pos. /62 pos.HD	360 X 15099 X
Socket Connector	50 pos. /78 pos.HD	360 X 15109 X





# Connecting with quality

CONEC – the specialist for connecting technology in

- Filter technology (EMI/RFI)
- Connectors for harsh environments
- Combination connectors (Power and Coax)
- Connectors referring to PICMG standard (ATCA,  $\mu$ TCA, CPCI)
- M12 circular connectors for High Temp, Food+Beverage amongst others

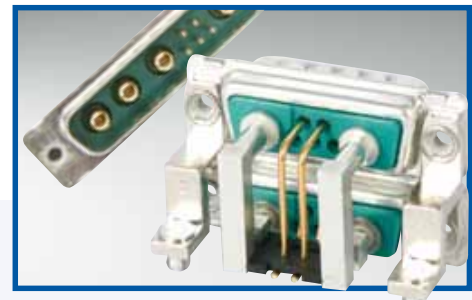
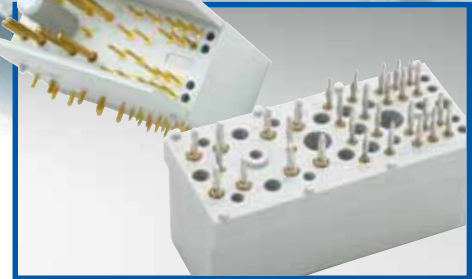
CONEC offers the ideal solution for your application too.  
Ask for information right now!

**CompactPCI<sup>®</sup>**

**$\mu$ TCA<sup>™</sup>**

**Advanced TCA**

Member of **PICMG**



[www.conec.com](http://www.conec.com)

**CONEC<sup>®</sup>**  
TECHNOLOGY IN CONNECTORS<sup>™</sup>