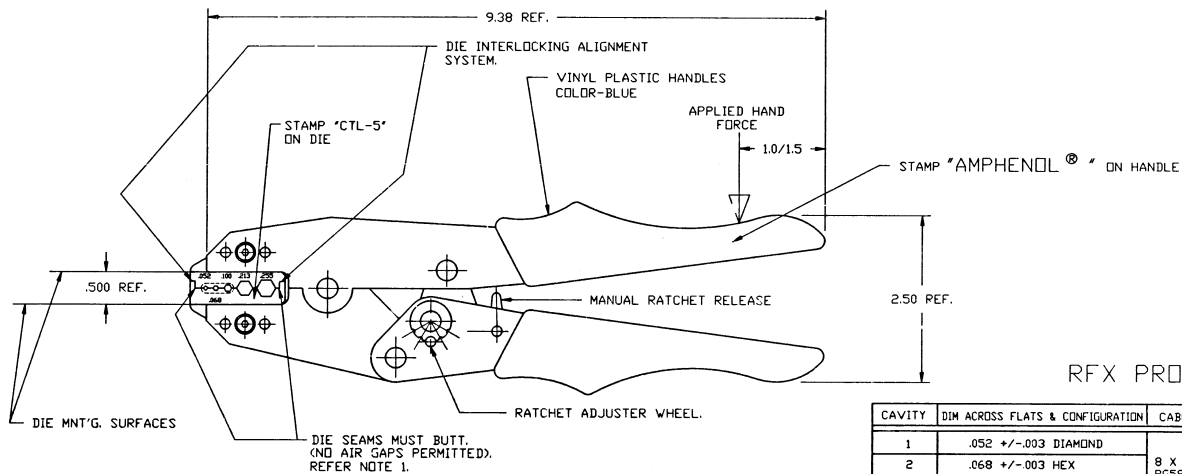


NOTES:

1. INITIAL TOOL SETTING REQUIREMENTS:

- WITH DIES FIRMLY AFFIXED IN TOOL ON THE DIE MNT'G SURFACES, CLOSE THE TOOL FULLY (UNTIL THE RATCHET RELEASES) WITH 25-35 LBS. HAND FORCE. THE DIES MUST BE 'BUTTED' (TOUCHING BOTH FRONT & REAR SURFACES). THE RATCHET ADJUSTER WHEEL SHOULD BE POSITIONED IN THE CENTER INDENT (+/- ONE INDENT POSITION).
- NOTE: LABEL 999-397 MUST BE AFFIXED TO TOOL CONTAINER BOX.
- DO NOT SCALE THIS DRAWING.
- REMOVE ALL BURRS, BREAK SHARP EDGES AND CORNERS .005 MAXIMUM, UNLESS OTHERWISE SPECIFIED.
- UNLESS OTHERWISE SPECIFIED, ALL DIMENSIONS ARE AFTER PLATING.

| CTL-5 | | REVISIONS | | | |
|-------------------|-----|--|------------|-------|------------------|
| DRAWING NO. | REV | DESCRIPTION | DATE | ECO | APPR |
| THIRD ANGLE PROJ. | A | OFFICIAL ENG. RELEASE TO MFG. | 9/27/91 | 38504 | JM/DR |
| | C | REDRAWN WAS 'C'; ADD CONFIGURATION TO TABLE; ADD NOTES 3, 4 & 5. | 29 July 94 | 40132 | CPM/ [Signature] |



RFX PROGRAM

| CAVITY | DIM ACROSS FLATS & CONFIGURATION | CABLES | CONNECTORS |
|--------|----------------------------------|--------------------------|---------------------------------|
| 1 | .052 +/- .003 DIAMOND | 8 X COAX RG58 RG59 | TYPE 'N' BNC/TNC MINI-UHF |
| 2 | .068 +/- .003 HEX | | |
| 3 | .100 +/- .003 HEX | | |
| 4 | .213 +/- .003 HEX | | |
| 5 | .255 +/- .003 HEX | | |

| | | | | | | | |
|---|---|------------------------------------|---------------------------------|--|--|----------------------|-------------------------|
| UNLESS OTHERWISE SPECIFIED, DIMENSIONS ARE IN INCHES AND TOLERANCES ARE: 2 PLACE DECIMAL ±.015 (0.381 mm) 3 PLACE DECIMAL ±.005 (0.127 mm) ANGLES ± 1° | MATERIAL AS PURCHASED | DRAWN J. MULVEY 9/23/91 | DATE 9/23/91 | TITLE 5 CAVITY QUICK CRIMP TOOL .052 DIAMOND .068/.100/.213/.255 HEX | Amphenol Amphenol Corporation RF/Microwave Operations Danbury, Conn. U.S.A. 06810 | | |
| | NOTICE - These drawings, specifications, or other data (1) are, and remain the property of Amphenol Corp. (2) must be returned upon request; and (3) are confidential and not to be disclosed to any person other than those to whom they are given by Amphenol Corp. The furnishing of unused drawings, specifications, or other data by Amphenol Corp., or to any other person to anyone for any purpose is not to be regarded by implication or otherwise in any manner licensing, granting, or authorizing such holder or any other person to manufacture, use or sell any product, process or design, patented or otherwise, that may in any way be related to or disclosed by said drawings, specifications, or other data. | REFERENCE EAR 962687-0 | ENGINEER D. ROYCE 9/26/91 | | | DATE 9/26/91 | SCALE: 75:1 SHEET OF |
| | | CAD FILE F:\DEPT611\TOOLS\CTL-5 | | CODE ID 74868 | DWG SIZE B | DRAWING NO. CTL-5 | ISSUE C |