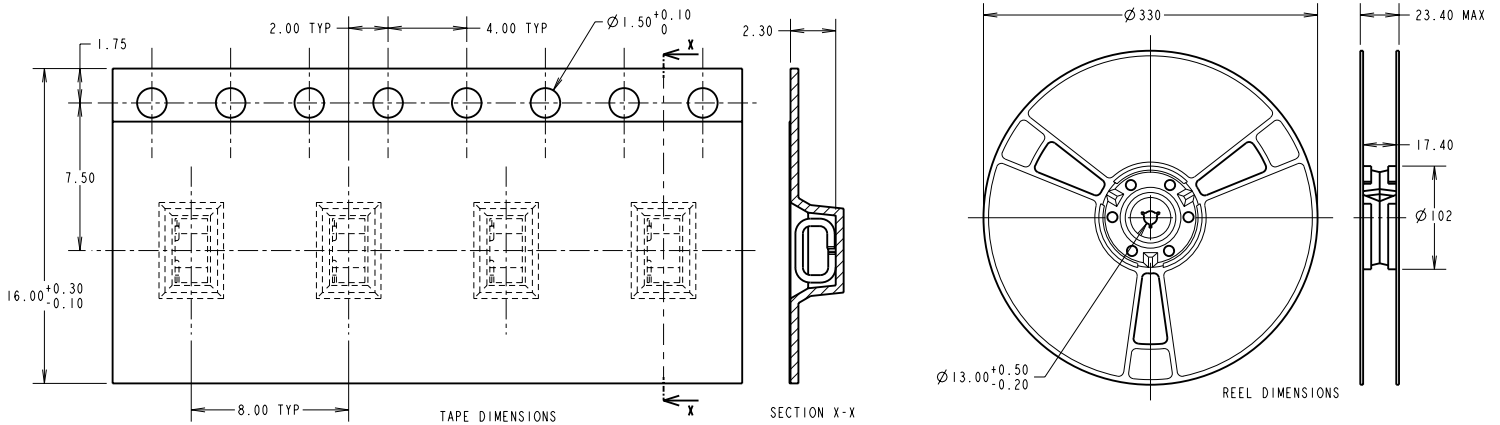
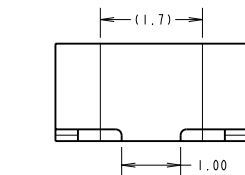
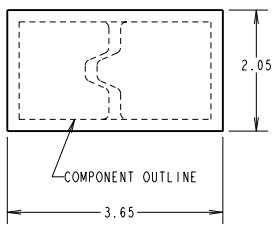


Customer Information Sheet

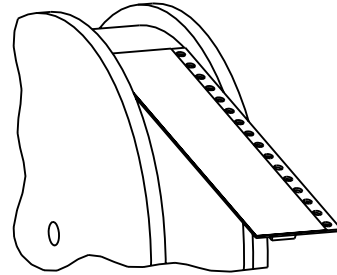
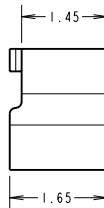
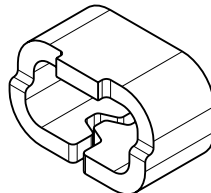
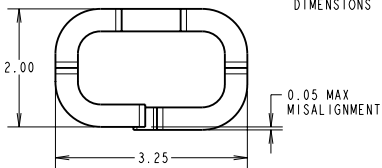
DRAWING No.: S1751-XXR SHEET 2 OF 2 IF IN DOUBT - ASK © NOT TO SCALE THIRD ANGLE PROJECTION ALL DIMENSIONS IN mm



RECOMMENDED PAD LAYOUT



SINGLE COMPONENT DIMENSIONS



REELING DIRECTION

COMPONENT SPECIFICATION:
 MATERIAL = BRASS CZ106 1/2 HARD
 FINISH:
 06 = 4 μ 90/10 TIN/LEAD
 46 = 4 μ 100% TIN

- NOTES:
 1. QUANTITY PER REEL = 2,500.
 2. THIS PRODUCT IS TAPED AND REELED IN ACCORDANCE WITH EIA-481-2-A (ELECTRONIC INDUSTRIES ASSOCIATION).
 3. FOR REELED COMPONENTS, SEE S175-XX.

HARWIN		
HARWIN INC U.S.A. TEL: (812) 542 2540 FAX: (812) 542 2541	HARWIN PLC U.K. TEL: 023 9231 4545 FAX: 023 9231 4590	HARWIN PTE SINGAPORE TEL: 65 6779 4909 FAX: 65 6779 3868

THIS DRAWING AND ANY INFORMATION OR DESCRIPTIVE MATTER SET OUT HEREON ARE CONFIDENTIAL AND COPYRIGHT PROPERTY OF THE HARWIN GROUP AND MUST NOT BE DISCLOSED, LOANED, COPIED OR USED FOR MANUFACTURING, TENDERING OR FOR ANY OTHER PURPOSE WITHOUT THEIR WRITTEN PERMISSION.

TOLERANCES
 X : $\pm 1\text{mm}$
 X.X : $\pm 0.25\text{mm}$
 X.XX : $\pm 0.10\text{mm}$
 X.XXX : $\pm 0.01\text{mm}$
 ANGLES = $\pm 5^\circ$
 UNLESS STATED

MATERIAL: SEE ABOVE
 FINISH:
 S/AREA: mm²

TITLE: SURFACE MOUNT TEST TERMINAL (TAPE AND REELED)
 DRAWING NUMBER: S1751-XXR

MGP	3	25.11.04	8242
NAME	ISS.	DATE	C/NOTE
APPROVED: PDC			
CHECKED: BMK			
DRAWN: W. J. BOURNE			
CUSTOMER REF.:			
ASSEMBLY DRG:			

ORDER CODE	FINISH
S1751-06R	TIN/LEAD
S1751-46R	100% TIN

SHT 2 OF 2