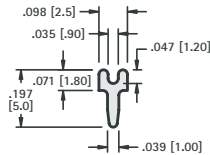


# PC TEST POINTS - SLOTTED & LOOP TYPES



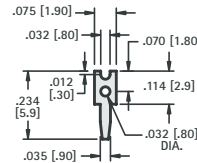
- Low profile, space saving designs for dense packaging
- Wide variety of configurations to suit most applications
- Safe, practical, economical replacement for wire-wrap posts
- Easy mount design, ideal for wave soldering
- Re-fit PC boards without need for re-design
- Provides easy access for production testing and field service troubleshooting
- Positive grip when using J hooks, EZ hooks, grabbers, clips, tips and probes
- Custom test point terminals can be manufactured to your specifications
- Other platings and materials available upon request

## PC TEST POINTS - SLOTTED



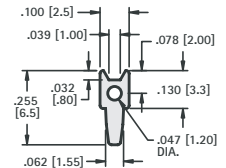
**CAT. NO. 4950**

**MATERIAL:**  
.025 (.64) thick Brass,  
Tin Plate



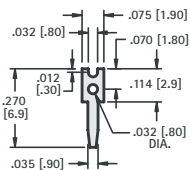
**CAT. NO. 1030**

**MATERIAL:**  
.025 (.64) thick Brass,  
Tin Plate



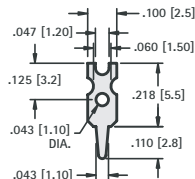
**CAT. NO. 1032**

**MATERIAL:**  
.025 (.64) thick Brass,  
Tin Plate



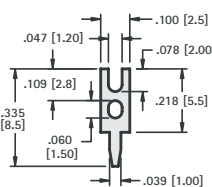
**CAT. NO. 1031**

**MATERIAL:**  
.020 (.51) thick Brass,  
Tin Plate



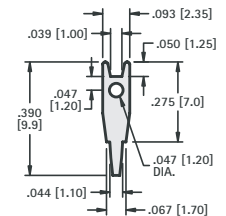
**CAT. NO. 1034**

**MATERIAL:**  
.025 (.64) thick Brass,  
Tin Plate



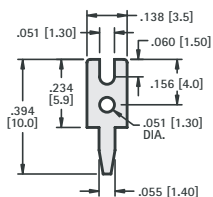
**CAT. NO. 1035**

**MATERIAL:**  
.020 (.51) thick Brass,  
Tin Plate



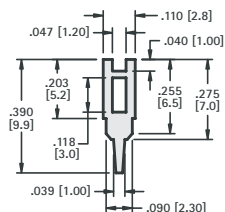
**CAT. NO. 1036**

**MATERIAL:**  
.025 (.64) thick Brass,  
Tin Plate



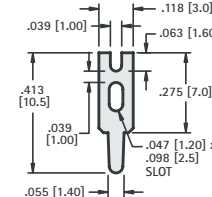
**CAT. NO. 1039**

**MATERIAL:**  
.025 (.64) thick Brass,  
Tin Plate



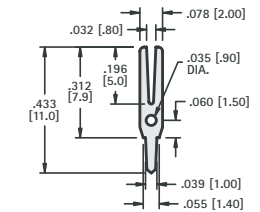
**CAT. NO. 1040**

**MATERIAL:**  
.025 (.64) thick Brass,  
Tin Plate



**CAT. NO. 4951**

**MATERIAL:**  
.025 (.64) thick Brass,  
Tin Plate

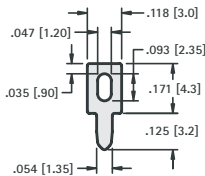
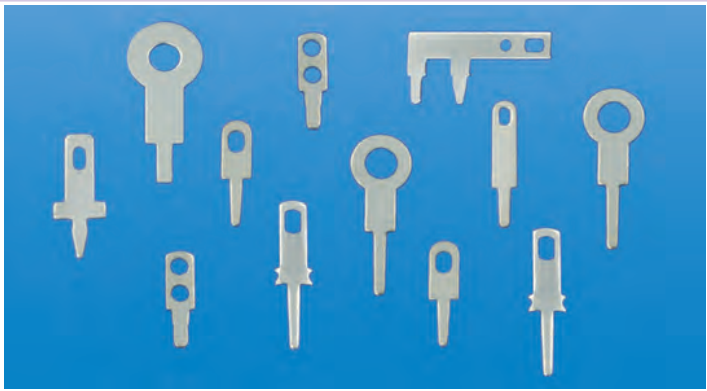


**CAT. NO. 1037**

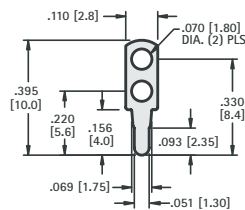
**MATERIAL:**  
.016 (.41) thick Brass,  
Tin Plate

PC TEST POINT TERMINALS

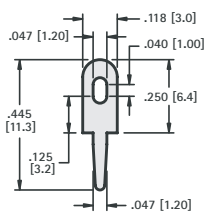
# PC TEST POINTS - LOOP TYPES



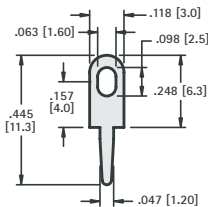
**CAT. NO. 1033**  
**MATERIAL:** .025 (.64) thick Brass, Tin Plate



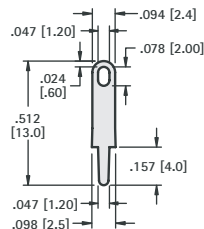
**CAT. NO. 1038**  
**MATERIAL:** .020 (.51) thick Brass, Tin Plate



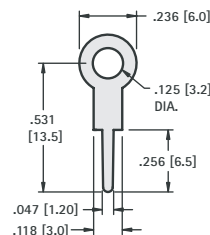
**CAT. NO. 1249**  
**MATERIAL:** .025 (.64) thick Brass, Tin Plate



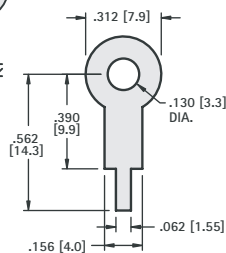
**CAT. NO. 4952**  
**MATERIAL:** .025 (.64) thick Brass, Tin Plate



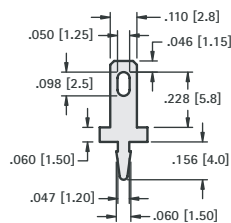
**CAT. NO. 4953**  
**MATERIAL:** .020 (.51) thick Brass, Tin Plate



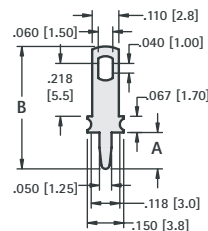
**CAT. NO. 4954**  
**MATERIAL:** .020 (.51) thick Brass, Tin Plate



**CAT. NO. 680**  
**MATERIAL:** .015 (.38) thick Brass, Tin Plate

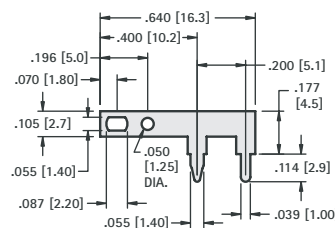
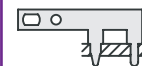


**CAT. NO. 1250**  
**MATERIAL:** .020 (.51) thick Brass, Tin Plate



**MATERIAL:** .032 (.81) thick Brass, Tin Plate

CAT. NO.	A	B
1041	.275 (7.0)	.630 (16.0)
1046	.150 (3.8)	.503 (12.8)

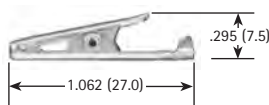


**CAT. NO. 1045**  
**MATERIAL:** .025 (.64) thick Brass, Tin Plate

## ALLIGATOR CLIPS

### SMALL CLIP

- Solder Connection with Strain Relief
- Insulated or Non-Insulated



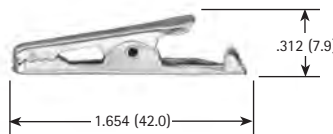
CAT. NO.	INSULATOR COLOR
5033	NONE
5034	RED
5035	BLACK
5036	GREEN
5037	YELLOW

**JAW SPREAD**  
 .236 (6.0) max.

**MATERIAL:**  
 Clip: Steel, Nickel Plate  
 Insulator: Vinyl

### MEDIUM CLIP

- Solder Connection with Strain Relief
- Insulated or Non-Insulated



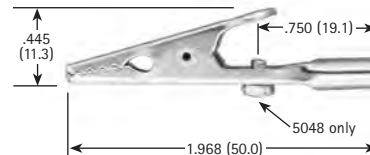
CAT. NO.	INSULATOR COLOR
5038	NONE
5039	RED
5040	BLACK

**JAW SPREAD**  
 .236 (6.0) max.

**MATERIAL:**  
 Clip: Steel, Nickel Plate  
 Insulator: Vinyl

### LARGE CLIP

- Solder Connection or Screw Connection (Barrel Accepts Wire or Standard Banana Plugs)
- Insulated or Non-Insulated



CAT. NO.	INSULATOR COLOR
5044	NONE
5045	RED
5046	BLACK
5048	SCREW INSTALLED

**JAW SPREAD**  
 .315 (8.0) max.

**MATERIAL:**  
 Clip: Steel, Nickel Plate  
 Insulator: Vinyl