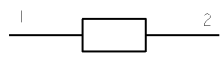
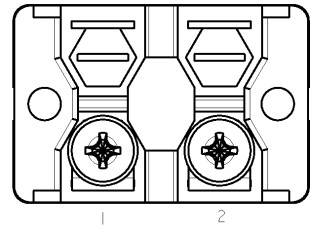
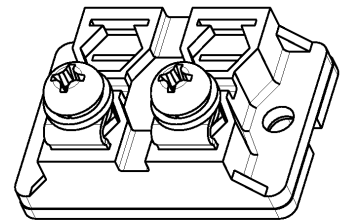
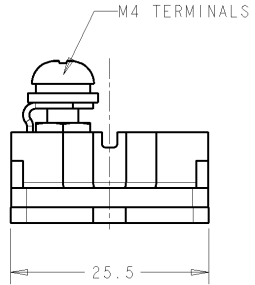
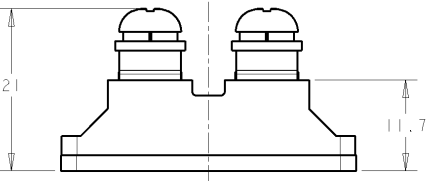
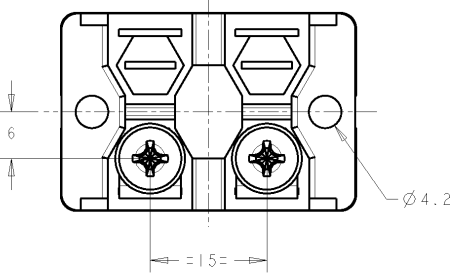
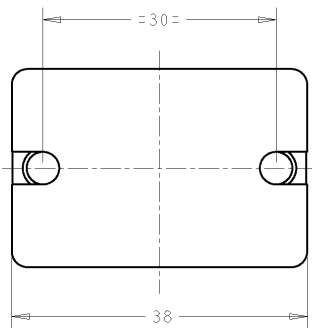


TYPE	POWER RATING AT 60°C	RESISTANCE	TOLERANCE
BDS 2A	100 Watts	IR to 1MΩ	K = ±10% J = ±5%



RoHS COMPLIANT

LIMITING ELEMENT VOLTAGE: 500V dc/ac rms (100W or less)
 ISOLATION VOLTAGE (TERMINAL TO HEATSINK): 2.5kV
 SINGLE SHOT (1.5/50ms): 4kV
 MAXIMUM RATED POWER (HEATSINK TEMP @ 60°C): 100W
 SHORT TERM OVERLOAD: 3 x RATED POWER, 10 sec's
 PARTIAL DISCHARGE: <20pC/2kV



DIMENSIONS: mm 		TOLERANCES UNLESS OTHERWISE SPECIFIED: 0 PLC ±0.5 1 PLC ±0.2 2 PLC ±0.02 3 PLC ±0.005 4 PLC ±0.0005 ANGLES ±0.5		DWN: T MOORE 15MAR2005 CHK: J CATCHPOLE 15MAR2005 APVD: J CATCHPOLE 15MAR2005 PRODUCT SPEC: - APPLICATION SPEC: - WEIGHT: 35g		TE Connectivity NAME: BDS2A100 SIZE: A3 CAGE CODE: 00779 DRAWING NO: C-1614782 RESTRICTED TO: -	
MATERIAL: -		FINISH: -		CUSTOMER DRAWING		SCALE: 2:1 SHEET: OF: REV: B1	