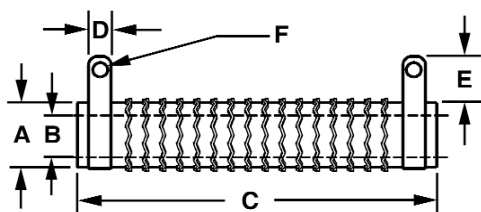


FVE / FSE EDGEWOUND RESISTORS

AVE / ASE

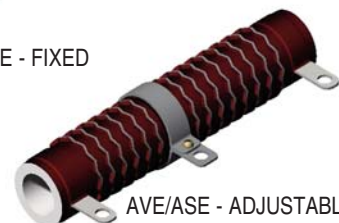
H.E.I. Edgewound Resistors are designed for applications demanding maximum power dissipation in minimum space. Edgewounds are constructed of special alloy resistance wire, crimped, and wound on edge. High quality ceramic cores are used with a coating of either vitreous (**FVE**) or silicone (**FSE**) to provide heat sink for short term overloads and maximum dissipation.



40 WATTS THRU 1500 WATTS



FVE/FSE - FIXED



AVE/ASE - ADJUSTABLE

FVE/AVE - VITREOUS FSE/ASE - SILICONE

TYPE	WATT	CORE			TERMINAL		
		A TYP	B +/- .032(0.8)	C +/- .032(0.8)	D TYP	E TYP	F CLEARANCE
FSE-40	40	.56 (14.3)	.31 (7.9)	2.00 (50.8)	.25 (6.4)	.56 (14.3)	8-32
FSE-50	50	.75 (19.0)	.50 (12.7)	2.00 (50.8)	.25 (6.4)	.56 (14.3)	8-32
FSE-90	90	.56 (14.3)	.31 (7.9)	4.00 (101.6)	.25 (6.4)	.56 (14.3)	8-32
FSE-100	100	.75 (19.0)	.50 (12.7)	3.50 (88.9)	.25 (6.4)	.56 (14.3)	8-32
FSE-110	110	.75 (19.0)	.50 (12.7)	4.00 (101.6)	.25 (6.4)	.56 (14.3)	8-32
FSE-120	120	.75 (19.0)	.55 (13.9)	4.50 (114.3)	.25 (6.4)	.56 (14.3)	8-32
FSE-155	155	1.13 (28.6)	.75 (19)	4.25 (108.0)	.31 (7.9)	.63 (15.9)	10-32
FSE-240	240	1.13 (28.6)	.75 (19)	6.50 (165.1)	.31 (7.9)	.63 (15.9)	10-32
FSE-300	300	1.13 (28.6)	.75 (19)	8.50 (215.9)	.31 (7.9)	.63 (15.9)	10-32
FSE-375	375	1.13 (28.6)	.75 (19)	10.50 (266.7)	.31 (7.9)	.63 (15.9)	10-32
FSE-420	420	1.13 (28.6)	.75 (19)	11.75 (298.5)	.31 (7.9)	.63 (15.9)	10-32
FSE-500	500	1.63 (41.3)	1.13 (28.6)	10.50 (266.7)	.50 (12.7)	.63 (15.9)	1/4-20
FSE-750	750	2.50 (63.5)	1.75 (44.5)	12.00 (304.8)	.50 (12.7)	.63 (15.9)	1/4-20
FSE-1000	1000	2.50 (63.5)	1.75 (44.5)	15.00 (381.0)	.50 (12.7)	.63 (15.9)	1/4-20
FSE-1500	1500	2.50 (63.5)	1.75 (44.5)	20.00 (508.0)	.50 (12.7)	.63 (15.9)	1/4-20

inches (mm)

ORDER INFORMATION

FVEK - 40 - 200

TYPE

FVE=FIXED VITREOUS, FSE=FIXED SILICONE
AVE=ADJUSTABLE SILICON, ASE=ADJUSTABLE SILICONE

POWER

INCLUDE FOR
TOLERANCE(K = $\pm 10\%$)

RESISTANCE
VALUE

OPTIONAL FEATURES AVAILABLE

RESISTANCE TOLERANCE: Standard tolerance is $\pm 10\%$ for all types.
Available Tolerances: F = $\pm 1\%$, J = $\pm 5\%$, K = $\pm 10\%$

MOUNTING HARDWARE: Spring grip mounting brackets are available for for cores 1 1/8" diameter and smaller O.D.'s. Horizontal or vertical thru-bolt with mica and ceramic bushings and mulpitple resistor brackets are available.

TEMPERATURE COEFFICIENT: 0 \pm 260 ppm/C is standard for 300 Watts.

OVERLOAD: 10 X rated power for 5 seconds.

WATTAGE DERATING CHART FOR HIGHER AMBIENT TEMPERATURES

