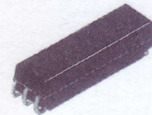
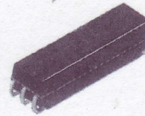
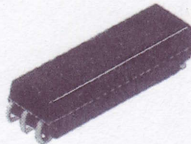
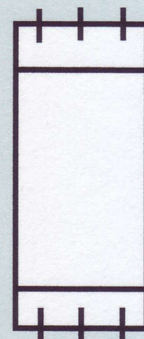
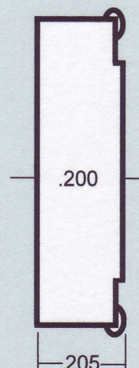
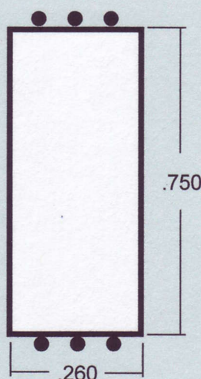


SMRR2-5-150**REED RELAY****REED RELAYS SMRR2-5-150****GENERAL SPECIFICATIONS**

VOLTAGE (MAXIMUM SWITCHING)	250 VDC
VOLTAGE (MINIMUM BREAKDOWN)	400 VDC
CURRENT (MAXIMUM SWITCHING)	0.5AMPS
CURRENT (MAXIMUM GATING OR CARRY)	1.0 AMP
POWER (RESISTIVE LOAD)	15 WATTS
CAPACITANCE (TYPICAL)	1.0 PF
CONTACT RESESTANCE (MAXIMUM INITIAL)	0.1OHMS
OPERATE TIME (TYPICAL)	.35 MS
LIFE (MILLIONS OF OPERATIONS TTL)	750
OPERATING TEMPERATURE	-55DEG C TO +85DEG C
SHOCK	50G @ 11MS DURATION
INSULATION RESISTANCE (OHMS)	10 TO THE 9TH
VIBRATION	20G @ 0-2000HZ

CONTACT RATINGS @ 20 DEGREES C

NOMINAL VOLTAGE	COIL RESISTANCE OHMS	PICK- UP VOLTAGE	DROP OUT VOLTAGE
4.5	150	3.5	1.0

FORM A CONFIGURATIONS**GLOSSARY****E ELECTROSTIC SHIELD**.075 LEAD SPACING
.018 DIAMETEREXTENSIVE CATALOG INFORMATION ON THE INTERNET
WWW.USRELAYS.COM

FOR YOUR CONVENIENCE JUST CHARGE IT!

**US RELAYS AND TECHNOLOGY, INC.**
13851 ROSWELL AVENUE UNITS F/G CHINO, CA. 91710 U.S.A.TEL (909) 902-5112
FAX (909) 902-5122
WWW.USRELAYS.COM