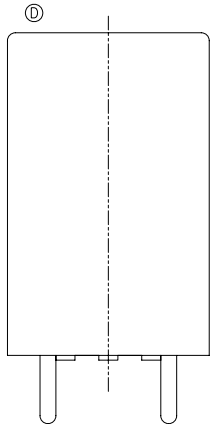
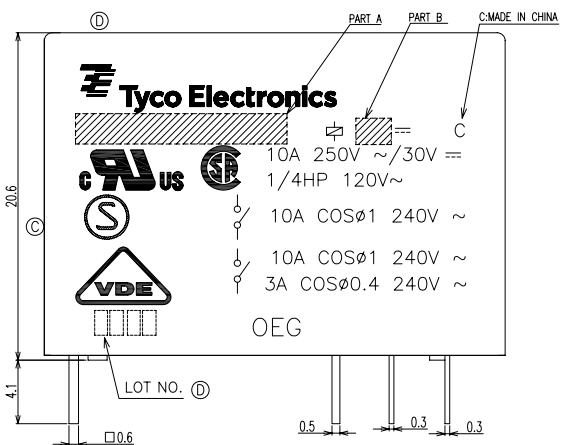
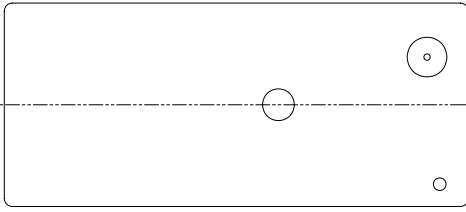
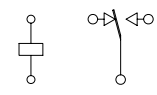


THIS DRAWING IS UNPUBLISHED. RELEASED FOR PUBLICATION
 © COPYRIGHT BY TYCO ELECTRONICS CORPORATION. ALL RIGHTS RESERVED.

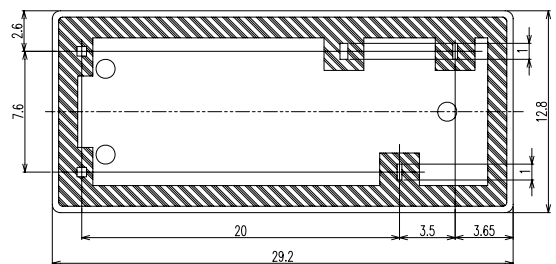
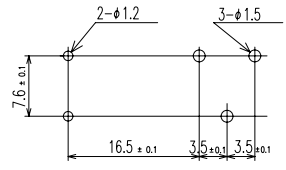
| LOC | | REVISIONS | | | | | | |
|-----|--|-----------|-----|-----------------|---------------|-----------|-----|------|
| HB | | P | LTR | DESCRIPTION | ECN | DATE | DWN | APVD |
| | | | B1 | MODIFY | FK00-0069-04 | 31-MAY-04 | H.S | A.N |
| | | | C | REVISE VDE LOGO | ECO-07-001278 | 3-JAN-07 | KSL | W.Y |
| | | | D | CHANGE NEW LOGO | ECO-08-019312 | 6-OCT-08 | MHL | BLY |



CONNECTION DIAGRAM (BOTTOM VIEW)



DRILLING DIAGRAM(2/1) (BOTTOM VIEW)

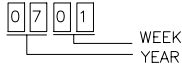


| | | | | | |
|--|--|------------------|-----------|-------|---|
| THIS DRAWING IS A CONTROLLED DOCUMENT FOR TYCO ELECTRONICS CORPORATION IT IS SUBJECT TO CHANGE AND THE CONTROLLING ENGINEERING ORGANIZATION SHOULD BE CONTACTED FOR THE LATEST REVISION. | | DWN | H.SASAKI | | Tyco Electronics Corporation Shenzhen, China |
| DIMENSIONS: mm | | CHK | Y.OIKAWA | | |
| TOLERANCES UNLESS OTHERWISE SPECIFIED: 0 PLC 1 PLC 2 PLC 3 PLC 4 PLC ANGLES | | APVD | A.NAGAI | | NAME |
| MATERIAL | | PRODUCT SPEC | - | | OMI-1T 300 CUSTOMER DRAWING |
| FINISH | | APPLICATION SPEC | - | | SIZE |
| | | WEIGHT | - | | A3 |
| | | CUSTOMER DRAWING | CAGE CODE | 00779 | DRAWING NO |
| | | | | | 3-1440000-4 |
| | | | | | RESTRICTED TO |
| | | | | | - |
| | | | | | SCALE 4:1 SHEET 1 OF 2 REV D |

THIS DRAWING IS UNPUBLISHED. RELEASED FOR PUBLICATION
 © COPYRIGHT BY TYCO ELECTRONICS CORPORATION. ALL RIGHTS RESERVED.

| LOC | | DIST | | REVISIONS | | | | | |
|-----|-----|-------------|-----|-----------|-----|------|--|--|--|
| P | LTR | DESCRIPTION | ECN | DATE | DWN | APVD | | | |
| | | | | | | | | | |

NOTES:
 1. -SH- : WASHABLE TYPE
 2. LOT NO. SYSTEM AS FOLLOWING:



3. GENERAL TOLERANCE AS FOLLOWING:

| TOLERANCE | |
|------------|------|
| 0~0.99mm | ±0.1 |
| 1mm~2.99mm | ±0.2 |
| 3mm MIN. | ±0.3 |

④ 4. TERMINAL DIMENSION IS NOT INCLUDING SOLDER TIP.

| TE PART NO | DESCRIPTION | PART B | PART A |
|-------------|-------------|--------|-------------|
| 4-1440000-5 | OMI-SH-148L | 48V | OMI-SH-148L |
| 4-1440000-2 | OMI-SH-124D | 24V | OMI-SH-124D |
| 3-1440000-5 | OMI-SH-105L | 5V | OMI-SH-105L |
| 3-1440000-4 | OMI-SH-105D | 5V | OMI-SH-105D |

RELAY TYPE

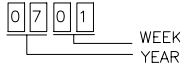
| INCOMBUSTIBILITY | TREATMENT | MATERIAL | DESCRIPTION | ITEM |
|------------------|------------|-------------|--------------------|------|
| | | UV RESIN | UV SEAL | 18 |
| | | EPOXY RESIN | SEAL | 17 |
| UL94 V-0 | | PBT | CASE | 16 |
| | | — | TAPE | 15 |
| CLASS E | | UEW | MAGNETIC WIRE | 14 |
| UL94 V-0 | | PET | BASE | 13 |
| UL94 V-0 | | PBT | BOBBIN | 12 |
| | SOLDER DIP | CP WIRE | COIL TERMINAL | 11 |
| UL94 V-0 | | PPS | CARD | 10 |
| | | Ag ALLOY | MOVABLE CONTACT | 9 |
| | | Ag ALLOY | STATIONARY CONTACT | 8 |
| | | Cu ALLOY | HINGE SPRING | 7 |
| | SOLDER DIP | Cu ALLOY | B TERMINAL | 6 |
| | SOLDER DIP | Cu ALLOY | M TERMINAL | 5 |
| | SOLDER DIP | Cu ALLOY | MOVABLE SPRING | 4 |
| | | STEEL | CORE | 3 |
| | | STEEL | ARMATURE | 2 |
| | | STEEL | YOKE | 1 |

| | | | | |
|--|--|------------------|---|---------------------------|
| THIS DRAWING IS A CONTROLLED DOCUMENT FOR TYCO ELECTRONICS CORPORATION IT IS SUBJECT TO CHANGE AND THE CONTROLLING ENGINEERING ORGANIZATION SHOULD BE CONTACTED FOR THE LATEST REVISION. | | DWN | Tyco Electronics Corporation Shenzhen, China | |
| DIMENSIONS: mm | | CHK | | |
| | | APVD | NAME OMI-1T 300 CUSTOMER DRAWING | |
| TOLERANCES UNLESS OTHERWISE SPECIFIED: 0 PLC ± 1 PLC ± 2 PLC ± 3 PLC ± 4 PLC ± ANGLES ± | | PRODUCT SPEC | DRAWING NO 3-1440000-4 | |
| MATERIAL | | APPLICATION SPEC | SIZE A3 | RESTRICTED TO - |
| FINISH | | WEIGHT | CAGE CODE 00779 | DRAWING NO 3-1440000-4 |
| | | CUSTOMER DRAWING | SCALE 4:1 SHEET 2 OF 2 REV D | |

THIS DRAWING IS UNPUBLISHED. RELEASED FOR PUBLICATION
 © COPYRIGHT BY TYCO ELECTRONICS CORPORATION. ALL RIGHTS RESERVED.

| LOC | | DIST | | REVISIONS | | | | | |
|-----|-----|-------------|-----|-----------|-----|------|--|--|--|
| P | LTR | DESCRIPTION | ECN | DATE | DWN | APVD | | | |
| | | | | | | | | | |

NOTES:
 1. -SH- : WASHABLE TYPE
 2. LOT NO. SYSTEM AS FOLLOWING:



3. GENERAL TOLERANCE AS FOLLOWING:

| TOLERANCE | |
|------------|------|
| 0~0.99mm | ±0.1 |
| 1mm~2.99mm | ±0.2 |
| 3mm MIN. | ±0.3 |

④ 4. TERMINAL DIMENSION IS NOT INCLUDING SOLDER TIP.

| TE PART NO | DESCRIPTION | PART B | PART A |
|-------------|-------------|--------|-------------|
| 4-1440000-5 | OMI-SH-148L | 48V | OMI-SH-148L |
| 4-1440000-2 | OMI-SH-124D | 24V | OMI-SH-124D |
| 3-1440000-5 | OMI-SH-105L | 5V | OMI-SH-105L |
| 3-1440000-4 | OMI-SH-105D | 5V | OMI-SH-105D |

RELAY TYPE

| INCOMBUSTIBILITY | TREATMENT | MATERIAL | DESCRIPTION | ITEM |
|------------------|------------|-------------|--------------------|------|
| | | UV RESIN | UV SEAL | 18 |
| | | EPOXY RESIN | SEAL | 17 |
| UL94 V-0 | | PBT | CASE | 16 |
| | | — | TAPE | 15 |
| CLASS E | | UEW | MAGNETIC WIRE | 14 |
| UL94 V-0 | | PET | BASE | 13 |
| UL94 V-0 | | PBT | BOBBIN | 12 |
| | SOLDER DIP | CP WIRE | COIL TERMINAL | 11 |
| UL94 V-0 | | PPS | CARD | 10 |
| | | Ag ALLOY | MOVABLE CONTACT | 9 |
| | | Ag ALLOY | STATIONARY CONTACT | 8 |
| | | Cu ALLOY | HINGE SPRING | 7 |
| | SOLDER DIP | Cu ALLOY | B TERMINAL | 6 |
| | SOLDER DIP | Cu ALLOY | M TERMINAL | 5 |
| | SOLDER DIP | Cu ALLOY | MOVABLE SPRING | 4 |
| | | STEEL | CORE | 3 |
| | | STEEL | ARMATURE | 2 |
| | | STEEL | YOKE | 1 |

| | | | | |
|--|--|------------------|---|---------------|
| THIS DRAWING IS A CONTROLLED DOCUMENT FOR TYCO ELECTRONICS CORPORATION IT IS SUBJECT TO CHANGE AND THE CONTROLLING ENGINEERING ORGANIZATION SHOULD BE CONTACTED FOR THE LATEST REVISION. | | DWN | Tyco Electronics Tyco Electronics Corporation Shenzhen, China | |
| DIMENSIONS: mm | | CHK | NAME | |
| TOLERANCES UNLESS OTHERWISE SPECIFIED: 0 PLC ±0.1 1 PLC ±0.1 2 PLC ±0.1 3 PLC ±0.1 4 PLC ±0.1 ANGLES ±0.1 | | APVD | OMI-1T 300 CUSTOMER DRAWING | |
| MATERIAL | | PRODUCT SPEC | SIZE | RESTRICTED TO |
| FINISH | | APPLICATION SPEC | A3 | — |
| | | WEIGHT | CAGE CODE | DRAWING NO |
| | | CUSTOMER DRAWING | 00779 | 3-1440000-4 |
| | | | SCALE | SHEET |
| | | | 4:1 | 2 OF 2 |
| | | | | REV D |