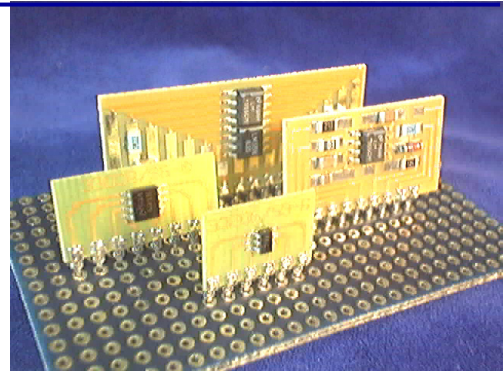


# SURFBOARDS®

RIDE THE SURFACE MOUNT WAVE™

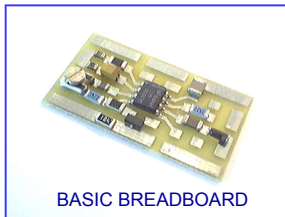
SURFACE MOUNT MADE **EASY**™ WITH **SURFBOARDS**®

**SURFBOARDS**® Make adapting, breadboarding, and testing of surface mount based circuits simple and easy. Almost anyone, often times with only basic soldering tools, can build surface mount based circuits quickly and economically with Surfboards. Capital Advanced Technologies was an early pioneer in the area of Surface Mount breadboard development with the introduction of Surfboards. Many models feature patented\* universal mounting zones for surface mount devices. Surfboards not only provide a breadboarding medium for Surface Mount, they make it compatible with traditional breadboards.

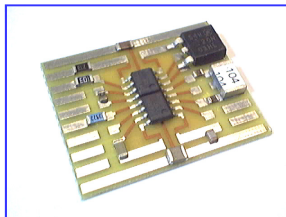


Many SURFBOARDS feature SIP (single-in-line) pins on .1 inch centers for compatibility with both traditional and solderless breadboards and sockets. Just add parts and plug in.

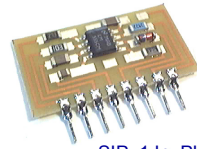
HOW EASY? SEE BULLITIN **SM-EZ-101**



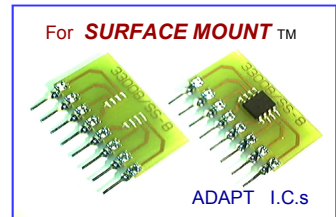
BASIC BREADBOARD



**BUILDING BLOCKS**

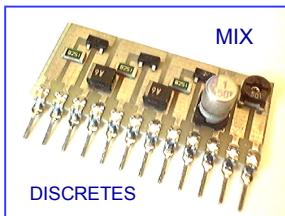


SIP .1 In. PINS



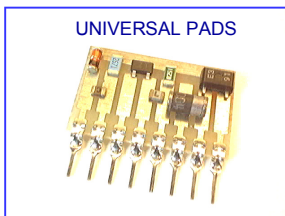
For **SURFACE MOUNT**™

ADAPT I.C.s



MIX

DISCRETES



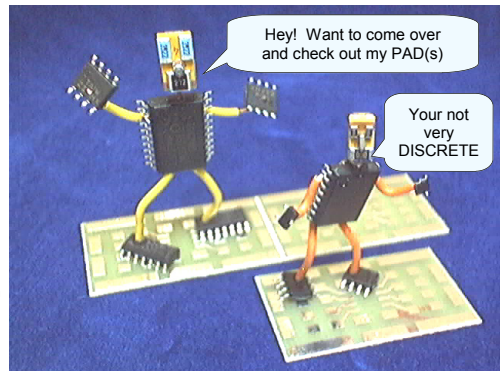
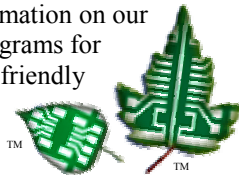
UNIVERSAL PADS

**SURFBOARDS** AVAILABLE FOR **I.C.s AND DISCRETE DEVICES**

Mix and Match I.C.s and discrete components. Use alone or with other breadboards. Please see our website [WWW.CapitalAdvanced.Com](http://WWW.CapitalAdvanced.Com) for full details on each product group, data sheets, Tips and suggestions on use, and application notes.

Surfboards are available in RoHS compliant LEAD FREE versions. Make your next proto a

**GREENPROTO**™ with Capitals **GREENSURF**™ lead free RoHS compliant finish. See Bulletin GP-106 for information on our products and programs for environmentally friendly prototyping.



**BULLETIN SB-110** 10/06

Copyright 2006, Capital Advanced Technologies, Inc. All Rights Reserved. \* U.S. Patent No. 6,467,163. SURFACE MOUNT MADE EASY, BUILDING BLOCKS FOR SURFACE MOUNT, SURFBOARDS, RIDE THE SURFACE MOUNT WAVE, GREENPROTO, GREENSURF, and LEAF/CIRCUIT image are trademarks or registered trademarks of Capital Advanced Technologies, Inc. Other trademarks are the property of their respective owners. Product availability and specifications subject the change without notice.

**CAPITAL ADVANCED TECHNOLOGIES, INC.**

PHONE 630-690-1696

[WWW.CapitalAdvanced.Com](http://WWW.CapitalAdvanced.Com)