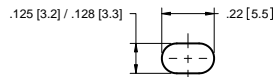


Ø.125 [3.2] / Ø.128 [3.3]

48.00 ± .50
[1219.2 ± 12.7]

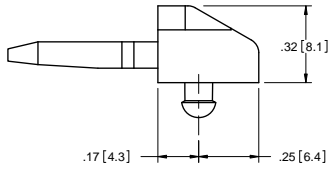
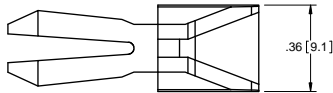
SECTION A-A
SCALE 2.5 : 1

.125 [3.2] / .128 [3.3]

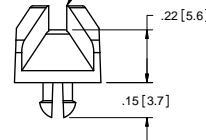


48.34 ± .50
[1227.8 ± 12.7]

MOUNTING HOLES

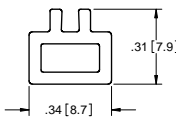


ACCEPTS 1/16 [1.6]
THICK BOARD



P/N: ACGE-01

1. MATERIAL: NYLON 66 (RMS-01)
2. COLOR: NATURAL



P/N: ACGC-4800

1. MATERIAL: PVC (RMS-04)
2. COLOR: NATURAL

ADJUSTABLE CARD GUIDE CHANNEL
P/N: ACGC-4800

ADJUSTABLE CARD GUIDE END
P/N: ACGE-01

NOTES:
1. PART NO. ACGC-4800 CAN BE CUT TO ANY LENGTH BY SPECIAL ORDER.
EXAMPLE: IF MOUNTING HOLES DISTANCE IS 5.00 [127.0], SUBTRACT .34 [8.6] FROM IT.
THEN YOUR CHANNEL LENGTH IS 4.66 [118.4].

TITLE: ADJUSTABLE CARD GUIDE		DWG IN IN [MM]		FINAL	
FILE #: ACGC-ACGE	DWN: P.B.	APP: -	PART #		
SHEET: 1 OF 1	SHEET SIZE: B	DT: 01/16/95	CHKD: -	SEE DRAWING	
RE: RICHCO, INC.	RICHCO, INC. ENG@RICHCO-INC.COM (773) 539-4060		PRINT TYPE CA		

E	SEE CO 200462 FOR CHANGES	SK	10/23/03
D	SEE ECN #1018 FOR CHANGES	SK	06/14/03
C	SEE ECN #800 FOR CHANGES	SM	06/14/03
B	P/N WAS ACGC-04 AND FILE # WAS 03060	SM	11.15.00
A	CONVERTED TO ACAD	PB	01.16.95
REV.	DESCRIPTION	ENGR.	DATE

CREATED USING
SOLIDWORKS
TOLERANCES
UNLESS NOTED
.XX±.010
.XX±.005
FRAC±.1/64
ANG±.1°