

To our customers,

---

## Old Company Name in Catalogs and Other Documents

---

On April 1<sup>st</sup>, 2010, NEC Electronics Corporation merged with Renesas Technology Corporation, and Renesas Electronics Corporation took over all the business of both companies. Therefore, although the old company name remains in this document, it is a valid Renesas Electronics document. We appreciate your understanding.

Renesas Electronics website: <http://www.renesas.com>

April 1<sup>st</sup>, 2010  
Renesas Electronics Corporation

Issued by: Renesas Electronics Corporation (<http://www.renesas.com>)

Send any inquiries to <http://www.renesas.com/inquiry>.

## Notice

1. All information included in this document is current as of the date this document is issued. Such information, however, is subject to change without any prior notice. Before purchasing or using any Renesas Electronics products listed herein, please confirm the latest product information with a Renesas Electronics sales office. Also, please pay regular and careful attention to additional and different information to be disclosed by Renesas Electronics such as that disclosed through our website.
2. Renesas Electronics does not assume any liability for infringement of patents, copyrights, or other intellectual property rights of third parties by or arising from the use of Renesas Electronics products or technical information described in this document. No license, express, implied or otherwise, is granted hereby under any patents, copyrights or other intellectual property rights of Renesas Electronics or others.
3. You should not alter, modify, copy, or otherwise misappropriate any Renesas Electronics product, whether in whole or in part.
4. Descriptions of circuits, software and other related information in this document are provided only to illustrate the operation of semiconductor products and application examples. You are fully responsible for the incorporation of these circuits, software, and information in the design of your equipment. Renesas Electronics assumes no responsibility for any losses incurred by you or third parties arising from the use of these circuits, software, or information.
5. When exporting the products or technology described in this document, you should comply with the applicable export control laws and regulations and follow the procedures required by such laws and regulations. You should not use Renesas Electronics products or the technology described in this document for any purpose relating to military applications or use by the military, including but not limited to the development of weapons of mass destruction. Renesas Electronics products and technology may not be used for or incorporated into any products or systems whose manufacture, use, or sale is prohibited under any applicable domestic or foreign laws or regulations.
6. Renesas Electronics has used reasonable care in preparing the information included in this document, but Renesas Electronics does not warrant that such information is error free. Renesas Electronics assumes no liability whatsoever for any damages incurred by you resulting from errors in or omissions from the information included herein.
7. Renesas Electronics products are classified according to the following three quality grades: “Standard”, “High Quality”, and “Specific”. The recommended applications for each Renesas Electronics product depends on the product’s quality grade, as indicated below. You must check the quality grade of each Renesas Electronics product before using it in a particular application. You may not use any Renesas Electronics product for any application categorized as “Specific” without the prior written consent of Renesas Electronics. Further, you may not use any Renesas Electronics product for any application for which it is not intended without the prior written consent of Renesas Electronics. Renesas Electronics shall not be in any way liable for any damages or losses incurred by you or third parties arising from the use of any Renesas Electronics product for an application categorized as “Specific” or for which the product is not intended where you have failed to obtain the prior written consent of Renesas Electronics. The quality grade of each Renesas Electronics product is “Standard” unless otherwise expressly specified in a Renesas Electronics data sheets or data books, etc.
  - “Standard”: Computers; office equipment; communications equipment; test and measurement equipment; audio and visual equipment; home electronic appliances; machine tools; personal electronic equipment; and industrial robots.
  - “High Quality”: Transportation equipment (automobiles, trains, ships, etc.); traffic control systems; anti-disaster systems; anti-crime systems; safety equipment; and medical equipment not specifically designed for life support.
  - “Specific”: Aircraft; aerospace equipment; submersible repeaters; nuclear reactor control systems; medical equipment or systems for life support (e.g. artificial life support devices or systems), surgical implantations, or healthcare intervention (e.g. excision, etc.), and any other applications or purposes that pose a direct threat to human life.
8. You should use the Renesas Electronics products described in this document within the range specified by Renesas Electronics, especially with respect to the maximum rating, operating supply voltage range, movement power voltage range, heat radiation characteristics, installation and other product characteristics. Renesas Electronics shall have no liability for malfunctions or damages arising out of the use of Renesas Electronics products beyond such specified ranges.
9. Although Renesas Electronics endeavors to improve the quality and reliability of its products, semiconductor products have specific characteristics such as the occurrence of failure at a certain rate and malfunctions under certain use conditions. Further, Renesas Electronics products are not subject to radiation resistance design. Please be sure to implement safety measures to guard them against the possibility of physical injury, and injury or damage caused by fire in the event of the failure of a Renesas Electronics product, such as safety design for hardware and software including but not limited to redundancy, fire control and malfunction prevention, appropriate treatment for aging degradation or any other appropriate measures. Because the evaluation of microcomputer software alone is very difficult, please evaluate the safety of the final products or system manufactured by you.
10. Please contact a Renesas Electronics sales office for details as to environmental matters such as the environmental compatibility of each Renesas Electronics product. Please use Renesas Electronics products in compliance with all applicable laws and regulations that regulate the inclusion or use of controlled substances, including without limitation, the EU RoHS Directive. Renesas Electronics assumes no liability for damages or losses occurring as a result of your noncompliance with applicable laws and regulations.
11. This document may not be reproduced or duplicated, in any form, in whole or in part, without prior written consent of Renesas Electronics.
12. Please contact a Renesas Electronics sales office if you have any questions regarding the information contained in this document or Renesas Electronics products, or if you have any other inquiries.

(Note 1) “Renesas Electronics” as used in this document means Renesas Electronics Corporation and also includes its majority-owned subsidiaries.

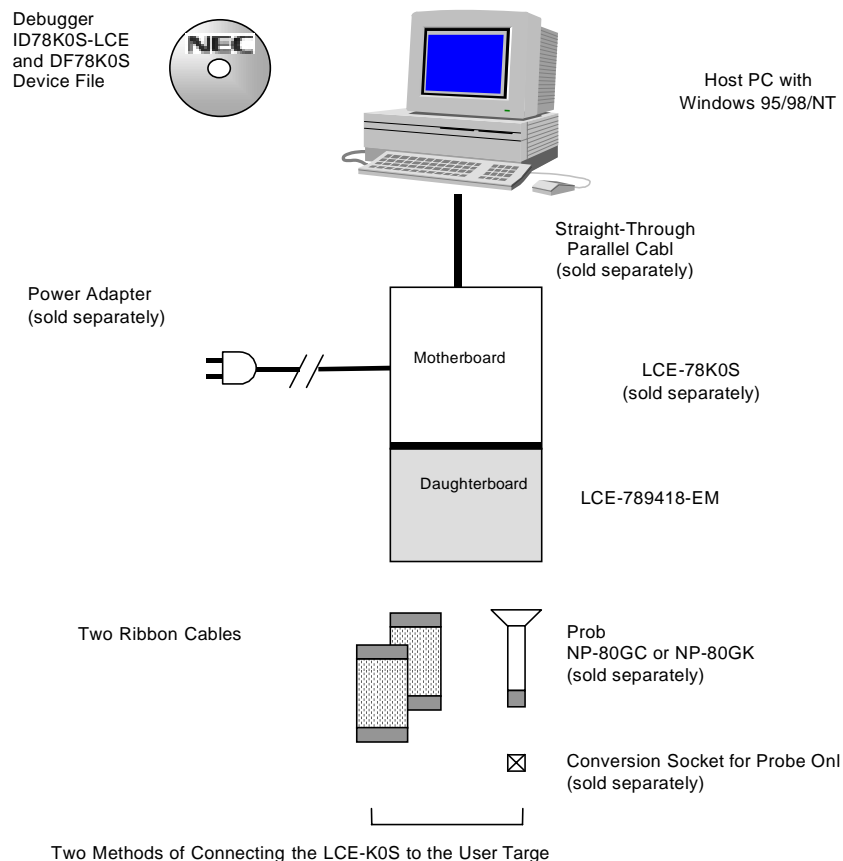
(Note 2) “Renesas Electronics product(s)” means any product developed or manufactured by or for Renesas Electronics.

### Introduction

The LCE-789418-EM is an emulation board or daughterboard for the LCE-K0S development system for NEC's 8-bit  $\mu$ PD789418 subseries microcontrollers. Combining this board with the LCE-78K0S allows you to efficiently emulate any  $\mu$ PD789418 subseries device. The LCE-789418-EM is shipped with the following contents:

- ❑ LCE-789418-EM daughterboard
- ❑ User's manual
- ❑ Two 50-pin ribbon cables
- ❑ CD-ROM containing debugger, compiler, assembler, and documentation

**Figure 1. System Configuration**



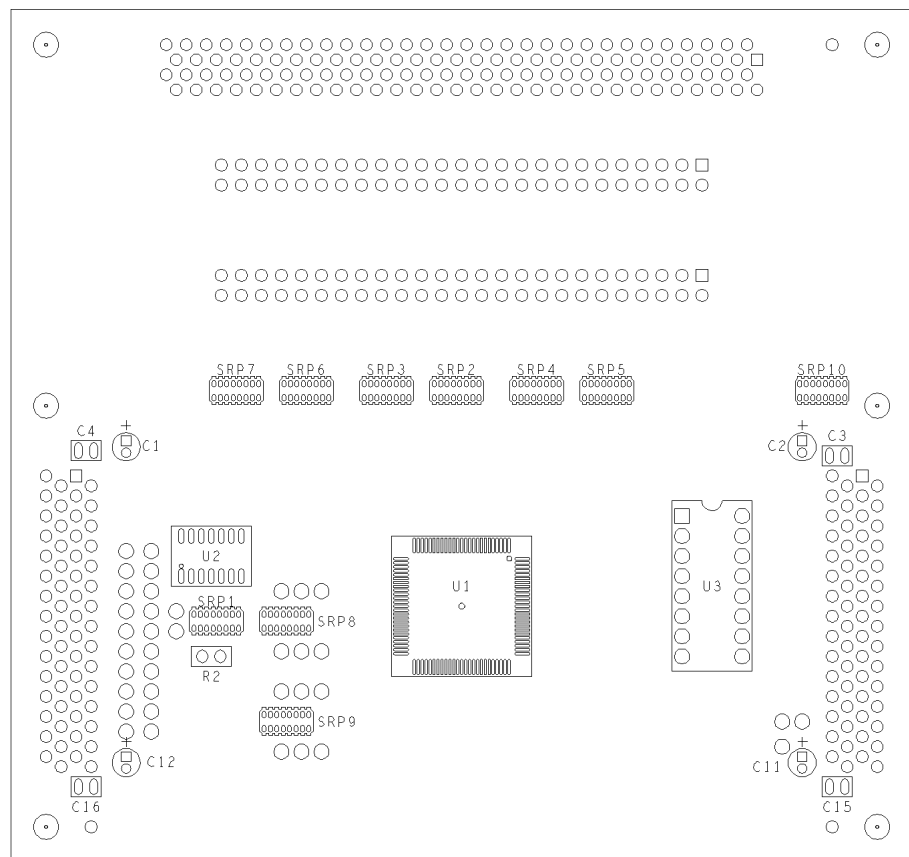
**Table 1. Basic Specifications**

Parameter	Description
Target device	μPD789405
	μPD789406
	μPD789407
	μPD789415
	μPD789416
	μPD789417
	μPD789418
Clock supply	Internal: installed on the motherboard
	External: pulse input
Low-voltage compatible	At least 2 volts

**Components**

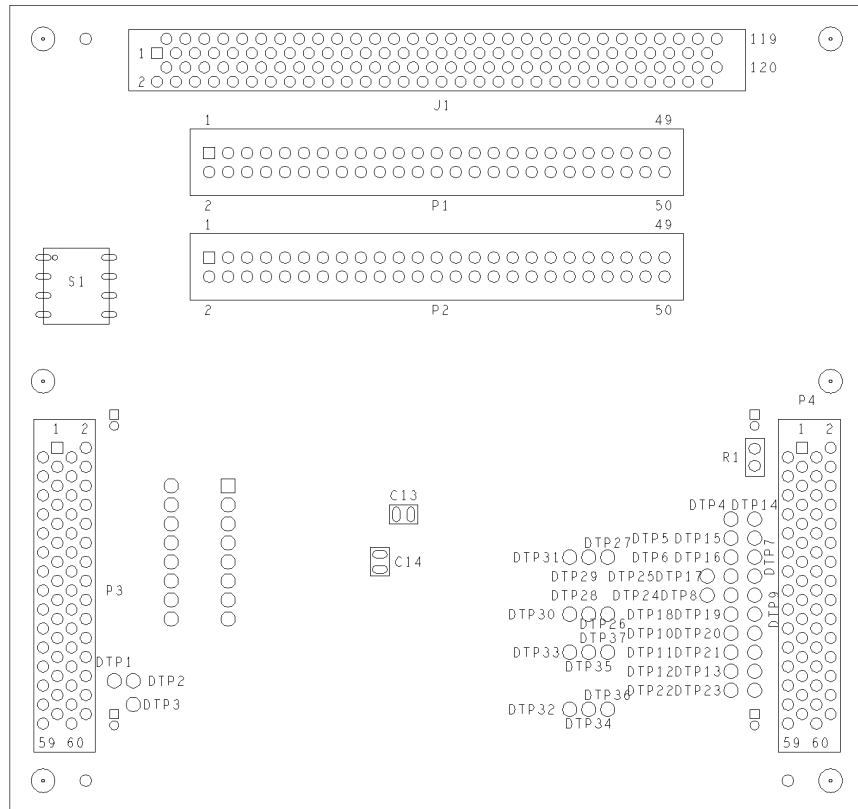
The LCE-789418-EM daughterboard mates with the LCE-78K0S motherboard. In other words, the top of the daughterboard faces down in the system. As shown in Figure 2, a top view of the daughterboard, U1 is the Realchip that provides peripherals unique to the μPD789418 devices. U3 is the user-defined LCD division resistor ladders.

**Figure 2. Top View of Daughterboard**



In the bottom view shown in Figure 3, J1, P1, and P2 are connectors to the user target. These connectors contain all of the pins available on the device. J1 is a KEL connector for the probe, while P1 and P2 are dual-row, male-shrouded headers with latching levers for the ribbon cables. See Tables 2-4 for pin assignments. S1 is a DIP switch for enabling or disabling pull-up resistors on the input pins for mask ROM. P3 and P4 are connectors for the motherboard, which attaches to the top of the daughterboard.

**Figure 3. Bottom View of Daughterboard**



### Ribbon Cable

The ribbon cable is a 50-pin female-to-female cable that connects the LCE-K0S to the user target. Alternatively, an emulation probe may be used. One end of the ribbon cable connects to the daughterboard and the other to the target. Since all devices in this product group are 80-pin devices, two ribbon cables are shipped with the daughterboard. The side of the ribbon cable with a red stripe is pin 1.

**Table 2. P1 Pin Assignment**

P1 Connector	μPD7894xx Device Pin	Signal	Note
1			GND on probe cable
2			GND on probe cable
3			GND on probe cable
4			GND on probe cable
5	1	VDD1	PB_VDD is voltage sense; tied to pin 71, VDD0
6	2	BIAS	
7	3	VLC0	
8	4	VLC1	
9	5	VLC2	
10	6	VSS1	VSS1 is tied to GN
11	7	COM0	
12	8	COM1	
13	9	COM2	
14	10	COM3	
15	11	S0	
16	12	S1	
17	13	S2	
18	14	S3	
19	15	S4	
20	16	S5	
21	17	S6	
22	18	S7	
23	19	S8	
24	20	S9	
25	21	S10	
26	22	S11	
27	23	S12	
28	24	S13	
29	25	S14	
30	26	S15	
31	27	P93/S16	
32	28	P92/S17	
33	29	P91/S18	
34	30	P90/S19	
35	31	P87/S20	
36	32	P86/S21	
37	33	P85/S22	

**Table 2. P1 Pin Assignments (continued)**

P1 Connector	μPD7894xx Device Pin	Signal	Note
38	34	P84/S23	
39	35	P83/S24	
40	36	P82/S25	
41	37	P81/S26	
42	38	P80/S27	
43			GND on probe cable
44			GND on probe cable
45			GND on probe cable
46			GND on probe cable
47			GND on probe cable
48			GND on probe cable
49			GND on probe cable
50			GND on probe cable

**Table 3. P2 Pin Assignments**

P2 Connector	μPD7894xx Device Pin	Signal	Note
1			GND on probe cable
2			GND on probe cable
3			GND on probe cable
4			GND on probe cable
5	39	AVDD	
6	40	AVREF	
7	41	P66/ANI6	
8	42	P65/ANI5	
9	43	P64/ANI4	
10	44	P63/ANI3	
11	45	P62/ANI2	
12	46	P61/ANI1/ CMPREF0	
13	47	P60/ANI0/ CMPIN0	
14	48	AVSS	AVSS is tied to GN
15	49	P27/INTP3/CPT5	
16	50	P26/INTP2/TO5	
17	51	P25/INTP1/TI1	
18	52	P24/INTP0/TI0	
19	53	P23/CMPTOUT0/ TO2	
20	54	P22/SI/RXD	
21	55	P21/SO/TXD	
22	56	P20/SCK/ASCK	
23	57	P53	

Table 3. P2 Pin Assignments (continued)

P2 Connector	μPD7894xx Device Pin	Signal	Note
24	58	P52	
25	59	P51	
26	60	P50	
27	61	P03	
28	62	P02	
29	63	P01	
30	64	P00	
31	65	P47	
32	66	P46	
33	67	RESET	Negative true
34	68	X2	Not connected in LCE-789418-E
35	69	X1	External clock input for oscillator on target
36	70	VSS0	Tied to GND
37	71	VDD0	PB_VDD is used for voltage sense; tied to pin 1, VDD1
38	72	XT2	Not connected in LCE-789418-E
39	73	XT1	External subclock input for oscillator on target
40	74	TEST/VPP	Not connected in LCE-789418-E
41	75	P45/KR	
42	76	P44/KR	
43	77	P43/KR	
44	78	P42/KR	
45	79	P41/KR	
46	80	P40/KR	
47			GND on probe cable
48			GND on probe cable
49			GND on probe cable
50			GND on probe cable



### Emulation Probe (Optional)

In place of ribbon cables, an emulation probe can be used to connect the LCE to the user target, provided the target has a conversion socket/adapter installed.

**Table 4. Emulation Probe Pin Assignments**

Emulation Device Pin No.	J1 Pin No.	Emulation Device Pin No.	J1 Pin No.
1	114	41	8
2	113	42	7
3	108	43	14
4	107	44	13
5	104	45	18
6	103	46	17
7	100	47	22
8	99	48	21
9	94	49	28
10	93	50	27
11	30	51	92
12	29	52	91
13	24	53	98
14	23	54	97
15	20	55	102
16	19	56	101
17	16	57	106
18	15	58	105
19	10	59	112
20	9	60	111
21	37	61	83
22	43	62	77
23	44	63	78
24	47	64	73
25	48	65	74
26	51	66	69
27	52	67	70
28	57	68	63
29	58	69	64
30	59	70	61
31	60	71	62
32	55	72	65
33	56	73	66
34	49	74	71
35	50	75	72
36	45	76	75
37	46	77	76
38	41	78	79
39	42	79	80
40	35	80	85

**Table 5. Emulation Probe and Socket for  $\mu$ PD789418 Subseries**

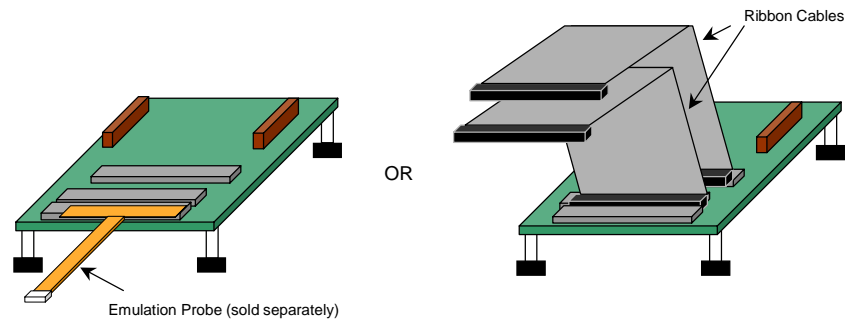
Target Device	Emulation Probe + Conversion Socket
$\mu$ PD789405GC	NP-80GC or NP-80GC-TQ +EV-TGC-080SBP
$\mu$ PD789406GC	
$\mu$ PD789407GC	
$\mu$ PD789415GC	
$\mu$ PD789416GC	
$\mu$ PD789417GC	
$\mu$ PD78F9418GC	
$\mu$ PD789405GK	
$\mu$ PD789406GK	
$\mu$ PD789407GK	
$\mu$ PD789415GK	
$\mu$ PD789416GK	
$\mu$ PD789417GK	
$\mu$ PD78F9418GK	

**Assembly**

This procedure explains how to connect the LCE-789418-EM to the LCE-78K0S motherboard.

1. Connect the probe or ribbon cables to their respective connectors on the LCE-789418-EM (Figure 4).

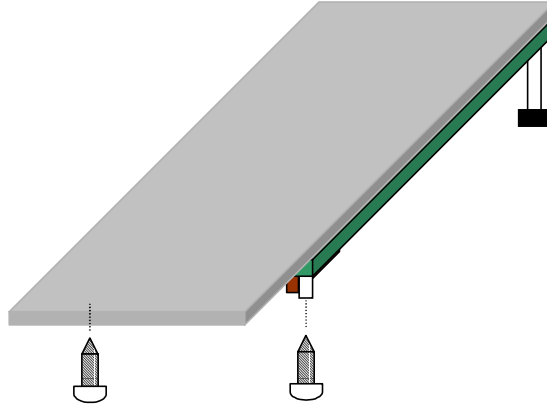
**Figure 4. Connections for Emulation Probe or Ribbon Cables**



2. Make sure power is off from the LCE-78K0S motherboard.

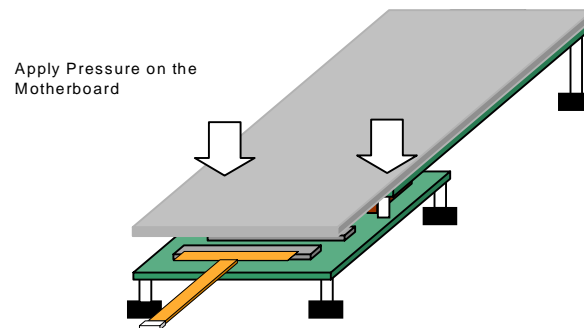
3. Remove the two screws at the bottom of the standoffs on the motherboard (Figure 5).

**Figure 5. Screws on Bottom of Motherboard**



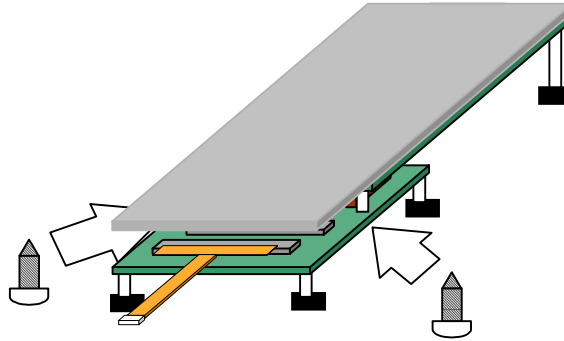
4. With the daughterboard on a stable surface, connect the motherboard on the daughterboard by gently applying pressure on the mating connectors. Avoid applying too much pressure on the plastic cover (Figure 6).

**Figure 6. Daughterboard Mating Connectors**



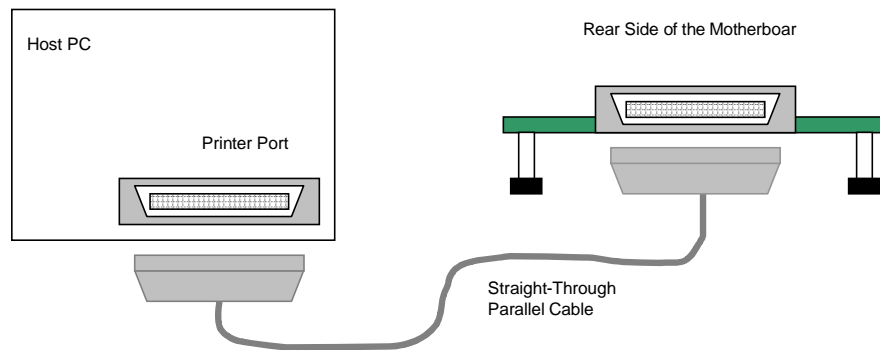
- 5. Replace the screws on the bottom of the daughterboard to securely connect it to the motherboard (Figure 7).

**Figure 7. Connection to Motherboard**



- 6. Connect the loose end of the probe or ribbon cables to the user target. Refer to Tables 2-4 for pin assignments.
- 7. With a 25-pin male-to-male parallel cable (not included), connect the LCE-K0S system to the host computer (Figure 8).

**Figure 8. Connection to Host PC**



- 8. With the power adapter connected, turn the switch to the ON position. The green LED turns on when power is supplied to the system.
- 9. Launch the debugger from your PC.





---

For literature, call **1-800-366-9782** 7 a.m. to 6 p.m. Pacific time  
or FAX your request to **1-800-729-9288**  
or visit our web site at **[www.necel.com](http://www.necel.com)**

---

**In North America:** No part of this document may be copied or reproduced in any form or by any means without the prior written consent of NEC Electronics Inc. (NECEL). The information in this document is subject to change without notice. All devices sold by NECEL are covered by the provisions appearing in NECEL Terms and Conditions of Sales only. Including the limitation of liability, warranty, and patent provisions. NECEL makes no warranty, express, statutory, implied or by description, regarding information set forth herein or regarding the freedom of the described devices from patent infringement. NECEL assumes no responsibility for any errors that may appear in this document. NECEL makes no commitments to update or to keep current information contained in this document. The devices listed in this document are not suitable for use in applications such as, but not limited to, aircraft control systems, aerospace equipment, submarine cables, nuclear reactor control systems, and life support systems. "Standard" quality grade devices are recommended for computers, office equipment, communication equipment, test and measurement equipment, machine tools, industrial robots, audio and visual equipment, and other consumer products. For automotive and transportation equipment, traffic control systems, anti-disaster and anti-crime systems, it is recommended that the customer contact the responsible NECEL salesperson to determine the reliability requirements for any such application and any cost adder. NECEL does not recommend or approve use of any of its products in life support devices or systems or in any application where failure could result in injury or death. If customers wish to use NECEL devices in applications not intended by NECEL, customer must contact the responsible NECEL salespeople to determine NECEL's willingness to support a given application.