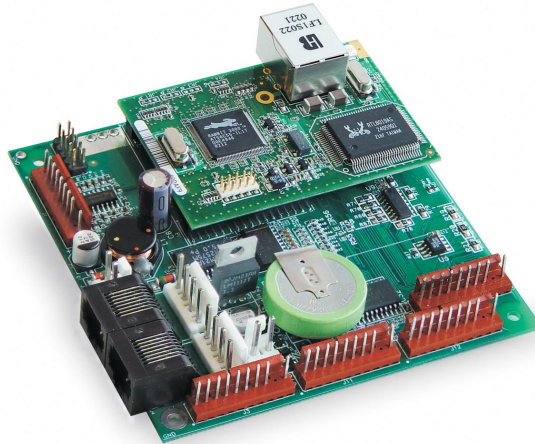


# EMBEDDED **PLC**



## Z-WORLD SINGLE BOARD COMPUTER *BL2500*

## EMBEDDED PLC USER'S MANUAL



TURNING YOUR PRODUCT VISION INTO REALITY  
[www.oem.net.au](http://www.oem.net.au)

SYSTEM ENGINEERS | SOFTWARE ENGINEERS | ELECTRONICS ENGINEERS  
Research | Specify | Design | Develop | Validate | Support | Custom Product Manufacture | Configuration | Warranty



---

## COPYRIGHT

EMBEDDED PLC BL2500 User's Manual • Part Number: TD-0002-4

© 2006 OEM Technology Solutions Pty Ltd. All rights reserved worldwide. This document is the property of OEM Technology Solutions Pty Ltd and may not be copied, used or disclosed in whole or in part except with the prior written permission of OEM Technology Solutions Pty Ltd or if it has been furnished under contract with another party, as specified in that contract. The copyright and the foregoing restriction on copying, use and disclosure extend to all media in which this information may be embodied. No liability is accepted for errors or omissions in this document. The information contained within this document is subject to change without notice.

---

## TRADEMARKS

EMBEDDED PLC is a registered trademark of OEM Technology Solutions Pty Ltd.

Microsoft, Windows, Windows XP, Windows 2000 and Windows NT are registered trademarks of Microsoft Corporation in the United States and/or other countries.

ISaGRAF is a registered trademark of ICS Triplex ISaGRAF Inc.

Rabbit and Rabbit 3000 are registered trademarks of Rabbit Semiconductor.

RabbitNet is a trademark of Z-World Inc.

Dynamic C is a registered trademark of Z-World Inc.

Indusoft is a registered trademark of Indusoft Ltd.

All other brand or product names are trademarks or registered trademarks of their respective holders.

---

## NOTICE TO USERS

When a system failure may cause serious consequences, protecting life and property against such consequences with a back-up system or safety device is essential. The buyer agrees that protection against consequences resulting in system failure is the buyer's responsibility.

This device is not approved for life support or medical systems.

### OEM Technology Solutions

Unit 13, 82 Reserve Road  
Artarmon NSW 2064  
AUSTRALIA

Telephone: +61 (2) 9966-9424  
Fax: +61 (2) 9966-9429

[www.oem.net.au](http://www.oem.net.au)

# TABLE OF CONTENTS

<b>1.</b>	<b>INTRODUCTION</b> .....	<b>1</b>
1.1	WHAT IS EMBEDDED PLC?.....	1
1.2	BL2500 OVERVIEW .....	1
1.3	ABOUT THIS MANUAL .....	2
1.4	EMBEDDED PLC APPLICATION KIT .....	3
1.5	TEXT CONVENTIONS .....	3
1.6	WINDOWS CONVENTIONS .....	3
1.7	REFERENCE DOCUMENTS.....	4
1.8	ABBREVIATIONS AND TERMINOLOGY.....	4
<b>2.</b>	<b>GETTING STARTED</b> .....	<b>7</b>
2.1	INTRODUCTION .....	7
2.2	SOFTWARE INSTALLATION.....	7
2.2.1	Installing ISaGRAF Workbench V3.50 .....	8
2.2.2	Installing EMBEDDED PLC Board Support Package (BSP) for BL2500 .....	8
2.3	LICENSING THE ISAGRAF WORKBENCH.....	8
2.3.1	Adding the software license.....	9
2.3.2	Adding a hardware license (optional).....	9
2.4	BL2500 CONNECTIONS .....	10
2.4.1	Connect a Power Supply .....	10
2.4.2	Connect an Ethernet Cable .....	10
2.4.3	Connect an RS232 Cable (optional).....	12
2.5	RUNNING A SAMPLE APPLICATION .....	12
2.6	WHERE DO I GO FROM HERE? .....	14
<b>3.</b>	<b>RUNNING SAMPLE APPLICATIONS</b> .....	<b>15</b>
3.1	RUNNING APPLICATIONS IN SIMULATION MODE .....	15
3.2	RUNNING APPLICATIONS THAT USE INTERNAL VARIABLES ONLY .....	17
3.3	RUNNING APPLICATIONS THAT USE BL2500 INPUTS AND OUTPUTS .....	18
3.3.1	Creating I/O connectors.....	18
3.3.2	Downloading and running the ISaGRAF application.....	19
3.4	CREATING A NEW PLC APPLICATION.....	20
3.4.1	Using Function Blocks Diagrams .....	20
3.4.2	Using Quick Ladder Diagrams .....	25
3.4.3	Using Structured Text.....	27
3.4.4	Using Instruction List .....	29
3.4.5	Using Sequential Function Chart.....	30
3.4.6	Using Flow Chart .....	33
<b>4.</b>	<b>HARDWARE REFERENCE</b> .....	<b>35</b>
4.1	DIGITAL INPUTS.....	35
4.2	DIGITAL OUTPUTS.....	36
4.3	ANALOG INPUT .....	36
4.4	ANALOG OUTPUT .....	37
4.5	COMMUNICATION INTERFACES .....	38
4.5.1	Serial Ports .....	38
4.5.2	Ethernet Port .....	39
4.6	LED INDICATORS.....	40
<b>5.</b>	<b>SOFTWARE REFERENCE</b> .....	<b>41</b>

---

5.1	MORE ABOUT ISAGRAF .....	41
5.1.1	Project Manager .....	41
5.1.2	Program Manager .....	41
5.1.3	Variable Definition .....	41
5.1.4	Functional Module Programming .....	41
5.1.5	IEC 61131-3 Language Editors .....	42
5.1.6	Flow Chart Editor .....	42
5.1.7	Document Generator .....	42
5.1.8	Simulation .....	42
5.2	ISAGRAF SOFTWARE REFERENCE .....	43
5.2.1	I/O Boards .....	43
5.2.2	ISaGRAF C Functions .....	45
5.2.3	ISaGRAF C Function Blocks .....	46
<b>6.</b>	<b>LOADING OR UPGRADING THE FIRMWARE KERNEL .....</b>	<b>48</b>
6.1	INTRODUCTION .....	48
6.1.1	Installing EMBEDDED PLC Utility .....	48
6.1.2	Connecting to the BL2500 .....	48
6.1.3	Loading and licensing the Firmware Kernel .....	49
6.1.4	Configuring the Firmware Kernel .....	50
6.2	EMBEDDED PLC UTILITY SOFTWARE REFERENCE .....	51
6.2.1	Menu Commands .....	51
6.2.2	Loading Shortcuts .....	53
<b>7.</b>	<b>FAQ AND TROUBLESHOOTING .....</b>	<b>54</b>
7.1	KNOWN ISSUES .....	54
7.1.1	BL2500 with Rabbit 3000 Microprocessor Revision 0 (IL1T) .....	54
7.1.2	BL2500 with Large Sector Flash .....	54
7.1.3	ISaGRAF Floating Point Arithmetic .....	54
7.1.4	Reading/writing 32-bit integer/real analog variables via Modbus .....	54
7.2	FAQ .....	55
7.3	TROUBLESHOOTING .....	57
7.3.1	Common Errors .....	57
7.3.2	Before Contacting Technical Support .....	58
<b>8.</b>	<b>SPECIFICATIONS .....</b>	<b>60</b>
8.1	ELECTRICAL AND MECHANICAL SPECIFICATIONS .....	60
<b>9.</b>	<b>ABOUT INDUSOFT .....</b>	<b>62</b>
9.1	USING INDUSOFT WEB STUDIO WITH EMBEDDED PLC .....	62

## LIST OF TABLES

---

Table 1: Main Features of the EMBEDDED PLC Firmware Kernel V1.04 on the BL2500 .....	2
Table 2: EMBEDDED PLC BL2500 Serial Port Configuration .....	38
Table 3: BL2500 Electrical, Mechanical and Environmental Specifications.....	61

## LIST OF FIGURES

---

Figure 1: Power Supply Connection.....	10
Figure 2: Ethernet connections .....	11
Figure 3: PC <-> BL2500 RS232 connection.....	12
Figure 4: BL2500 Pinouts .....	35
Figure 5: BL2500 Digital Inputs (Pull-up factory default).....	36
Figure 6: BL2500 Digital Outputs .....	36
Figure 7: Schematic Diagram of the A/D Converter .....	37
Figure 8: Schematic Diagram of D/A Converters .....	37
Figure 9: BL2500 Multidrop Network.....	39
Figure 10: RS485 Termination and Bias Resistors .....	39
Figure 11: RJ-45 Ethernet Port Pinout .....	39
Figure 12: Programming Cable Connection .....	49
Figure 13: BL2500 Dimensions .....	60

This page is intentionally left blank

## 1. INTRODUCTION

### 1.1 WHAT IS EMBEDDED PLC?

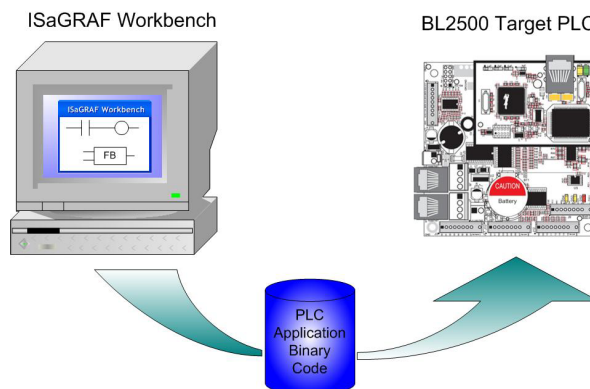
The EMBEDDED PLC system turns a Rabbit-based controller, such as the Coyote BL2500 Single-Board Computer (SBC), into a high performance and yet inexpensive Programmable Logic Controller (PLC). The Target PLC can be programmed using the EMBEDDED PLC – ISaGRAF® Workbench in any of the standardized automation control programming languages IEC 61131-3:

- Sequential Function Chart (SFC)
- Function Block Diagram (FBD)
- Ladder Diagram (LD)
- Structured Text (ST)
- Instruction List (IL)

EMBEDDED PLC – ISaGRAF Workbench becomes an alternative to Dynamic C to program Rabbit-based controllers.

The EMBEDDED PLC system consists of two parts:

- The **Target PLC**: A SBC BL2500 powered with the RabbitCore® module RCM3200 (Rabbit 3000 microprocessor, 44.2 MHz clock speed, 512K Flash, 256K Battery-backed SRAM, 512K Fast SRAM and 10/100BaseT) and loaded with the EMBEDDED PLC Firmware Kernel (or refer to as the Kernel). The Firmware Kernel is distributed as a .bin file which is loaded to the Target through the EMBEDDED PLC Utility. The Kernel runs the PLC application in a loop (reading inputs → evaluate the logic → updating outputs) and also provides the communication interface between the Target and the Workbench.
- The **ISaGRAF Workbench**: The Workbench provides a complete PLC programming environment, including an editor for each of the PLC programming languages, downloading PLC application to the target, simulation, program-debugging tools and on-line monitoring of the PLC application.



### 1.2 BL2500 OVERVIEW

The BL2500 is an advanced Single Board Computer that incorporates flash memory, SRAM, digital I/O ports, A/D converter input, D/A converter outputs, RS232/RS485 ports and Ethernet interface (10/100 Mbps). The BL2500 SBC gives PLC designers extremely low-cost embedded control for high-volume applications such as product control, factory equipment control, access control, HVAC and vending machines.

The BL2500's compact board size of 100 x 100 mm is easily mountable in standard 100 mm DIN rail trays. External connections via polarized locking industry standard Molex® type connectors enable rapid assembly with wire harnesses. These connectors also provide dependable cable harness connectivity to I/O.

Main features of the EMBEDDED PLC Firmware Kernel running on the BL2500 Target PLC, are shown in Table 1.

**Table 1: Main Features of the EMBEDDED PLC Firmware Kernel V1.04 on the BL2500**

<b>Kernel filename</b>	BL2500C_V1.04_3-0231H.bin
<b>SBC model supported</b>	BL2500 with Rabbit core module RCM3200 (10/100BaseT, 512K Flash, 256K + 512K SRAM, 44.2 MHz clock speed). Z-World P/N: 101-0602
<b>I/Os supported</b>	<ul style="list-style-type: none"> <li>- 16 Digital Inputs</li> <li>- 8 Digital Outputs</li> <li>- 1 Analog Input (connected through AD0): 10 bits resolution, 0 – 3.3 V</li> <li>- 1 Analog Output (connected through DA1): 10 bits resolution, 0 – 3.3 V</li> </ul>
<b>Communications</b>	<p>Modbus RTU over TCP/IP using static IP address</p> <p>Modbus RTU over RS232 (using serial port E) or RS485 (using serial port D):</p> <ul style="list-style-type: none"> <li>- Baud rate: 19200, 9600, 4800, 2400, 1200 or 600 (configurable through EMBEDDED PLC Utility)</li> <li>- Parity: None</li> <li>- Data bits: 8</li> <li>- Stop bits: 1</li> <li>- Flow Control: None</li> </ul> <p>Minimum polling period time is 1 cycle duration for Modbus TCP and 2 x cycle duration for Modbus RTU over RS232/RS485. Cycle duration corresponds to the time that kernel executes one cycle (read inputs → execute logic → update outputs)</p>
<b>Performance</b>	<ul style="list-style-type: none"> <li>- Digital Input scan time is approx. 200 µs.</li> <li>- Analog Input scan time is approx. 83 ms.</li> <li>- Digital Output update time is approx. 30 µs per output.</li> <li>- Analog Output update time is approx. 120 µs.</li> <li>- Boolean instruction execution time is approx. 30 µs.</li> <li>- Program execution overhead is approx. 100 µs per program.</li> </ul>
<b>Memory Space</b>	<p>Maximum size of ISaGRAF application database is 50000 bytes.</p> <p>Size of ISaGRAF real-time database (holds variables, SFC engine data, C function and function blocks data) is 10000 bytes.</p> <p>Free root memory on the BL2500 is approx. 9000 bytes.</p> <p>EMBEDDED PLC firmware kernel total code size is approx. 260000 bytes.</p>
<b>ISaGRAF V3.50 features not supported by EMBEDDED PLC</b>	<ul style="list-style-type: none"> <li>- On-line modifications. This feature enables the user to modify the application while the process is running.</li> <li>- Uploading application stored in the target.</li> </ul>

### 1.3 ABOUT THIS MANUAL

This manual provides instructions for installing, testing, configuring and interconnecting the Z-World SBC BL2500 running the EMBEDDED PLC Firmware Kernel. Instructions are also provided for using the ISaGRAF Workbench.

This User's Manual is divided into the following chapters:

- This chapter provides an overview of the EMBEDDED PLC and information about this publication such as conventions used and reference documents.
- Chapter 2, Getting Started: Explains how to install the different EMBEDDED PLC products and run a sample application.
- Chapter 3, Running Sample Applications: Provides instructions how to run the different types of sample applications and also how to create a PLC application using the ISaGRAF Workbench.
- Chapter 4, Hardware Reference: Provides a detailed description of the I/Os and communication ports present in the SBC BL2500 and how to configure them in order to work with EMBEDDED PLC.



- Chapter 5, Software Reference: Provides an overview of the ISaGRAF Workbench functionalities and detailed description of the ISaGRAF library elements (I/O boards software configuration, C functions and C function blocks) available from the ISaGRAF Workbench.
- Chapter 6, Using EMBEDDED PLC Utility: Detailed description of the EMBEDDED PLC Utility.
- Chapter 7, FAQ and Troubleshooting: Describes the known issues with this release, frequently asked questions and troubleshooting.
- Chapter 8, Specifications: Describes the electrical, mechanical and environmental specifications of the BL2500.
- Chapter 9, About Indusoft: A brief description of Indusoft Web Studio and how can be used in conjunction with EMBEDDED PLC.



## 1.4 EMBEDDED PLC APPLICATION KIT

The EMBEDDED PLC BL2500 Application Kit contains the hardware and software needed to use the SBC BL2500 with EMBEDDED PLC system. It contains:

- BL2500 Single Board Computer with Ethernet capability and pre-loaded with the EMBEDDED PLC Firmware Kernel.
- 1.27mm programming cable.
- Ethernet crossover cable.
- EMBEDDED PLC BL2500 CD-ROM, with complete product documentation on disk.
- EMBEDDED PLC – ISaGRAF V3.50 Workbench License Registration form.
- Getting Started instructions.

## 1.5 TEXT CONVENTIONS

This manual uses special formatting to help you quickly identify certain items, as follows:

- Titles, labels, and new terms are indicated using *italic* text.
- File names, messages and screen text are indicated using bold, courier text (for example, **C:\OEMTech\Install.exe**).
- Variables and information you must provide are indicated using bold, italicized text enclosed in < and > brackets (for example, run the **<driver name>.exe** file indicates you must provide a driver name).
- Buttons, menu options and keyboard key are indicated in **bold**.
- Text requiring special emphasis is in **bold italic**.
- Some information is segregated into **Note** and **Caution** boxes as follows:
  -  **Notes** provide supplemental information related to the surrounding text, usually the text just preceding the note.
  -  **Caution** provides information necessary to prevent damage or problems.

## 1.6 WINDOWS CONVENTIONS

This manual uses the following Windows conventions:

- Dialog boxes (or dialogs) are windows that allow you to enter information.
- Text boxes (or fields) are areas in dialogs where you can type in text.
- Radio buttons are white circles in which a black dot appears or disappears when you click on the button. Typically, the black dot indicates that the option or function is enabled (active). The absence of a black dot indicates the option or function is disabled (inactive).

- Check-boxes are white squares in which a check appears or disappears when you click on it with the cursor. Typically, the check indicates that the option or function is enabled (active). The absence of a check indicates the option or function is disabled (inactive).
- Buttons are icons in boxes that appear “pressed” when you click on them.
- Lists are panes (white boxes) in windows or dialog boxes containing two or more selectable options.
- Combo-boxes have arrows that, when clicked, show part or all of an otherwise concealed list.

**Note:**

The dialogs and procedures described in this manual are valid for Windows 2000 and XP. Some terms may vary according to the operating system (type, language and version) you are using.

## 1.7 REFERENCE DOCUMENTS

- [1] 019-0120 · 041215-H – *Coyote (BL2500) C-Programmable Single-Board Computer with Ethernet User's Manual*, 2002-2004 Z-World Inc.
- [2] *ISaGRAF Version 3.5 User's Guide*, 1994 – 2004 ICS Triplex ISaGRAF Inc.
- [3] 019-0108 · 050610-P - *Rabbit® 3000 Microprocessor User's Manual*, 2002-2005 Rabbit Semiconductor.

## 1.8 ABBREVIATIONS AND TERMINOLOGY

The following abbreviations are terms used throughout the document.

Term	Description
A/D	Analog to Digital
BSP	Board Support Package
D/A	Digital to Analog
DDE	Dynamic Data Exchange
FAQ	Frequently Asked Questions
FBD	Function Block Diagram
FC	Flow Chart
HMI	Human Machine Interface
HVAC	Heating, Ventilation and Air-Conditioning. This is sometimes referred to as climate control.
I/O	Input/Output
IL	Instruction List
IWS	Indusoft Web Studio
LAN	Local Area Network
LD	Ladder Diagram
LED	Light Emitting Diode
ODBC	Open Database Connectivity
OPC	OLE (Object Linking and Embedding) for Process Control
PC	Personal Computer
PLC	Programmable Logic Controller
RAM	Random Access Memory
SBC	Single Board Computer
SCADA	Supervisory Control And Data Acquisition
SFC	Sequential Function Chart

SRAM	Static Random Access Memory
ST	Structured Text
TCP/IP	Transport Control Protocol/Internet Protocol
USB	Universal Serial Bus

This page is intentionally left blank

## 2. GETTING STARTED

### 2.1 INTRODUCTION

The EMBEDDED PLC Application Kit provides all the necessary tools to program the Z-World SBC BL2500 (Coyote) via the ISaGRAF Soft Logic package. This chapter will help you to quickly install the necessary software to run a PLC sample application on the BL2500 target using the ISaGRAF Workbench. This chapter contains also important information about licensing your product.

To run the EMBEDDED PLC software products it is required to have a Personal Computer (PC) with at least a 133-MHz processor (550-MHz or faster processor is recommended). This PC will be referred as the *Host*. The PC must have the following hardware and software configuration:

- Windows 2000 or XP operating system
- 128 MB of RAM required; 256 MB or more recommended
- 1.25 to 2 GB of available hard-disk space
- CD-ROM or DVD-ROM drive
- VGA or hardware that supports console redirection required; Super VGA supporting 800 x 600 or higher-resolution monitor recommended
- 1 serial port (COM1 – COM4)
- Ethernet card

 **Note:**

The EMBEDDED PLC Application Kit comes with one Z-World SBC BL2500 pre-loaded with the EMBEDDED PLC Firmware Kernel. If you require to load the Firmware Kernel to another BL2500 or to upgrade the current one, go to Chapter 6, which describes in detail the installation of the additional software and how to load or upgrade the EMBEDDED PLC Firmware Kernel to the Target.

### 2.2 SOFTWARE INSTALLATION

The EMBEDDED PLC CD-ROM contains the following software:

- **ISaGRAF\_v3.50**: EMBEDDED PLC – ISaGRAF V3.50 Workbench installer. This particular installation is intended to work in stand-alone mode or only with EMBEDDED PLC Rabbit-based targets. After installation of the Workbench, the software runs in a trial mode for 30 days. After period expires, license is required.
- **BL2500C\_BSP\_v1.04\_9-0003-006**: EMBEDDED PLC Board Support Package (BSP) for the SBC BL2500. It contains the EMBEDDED PLC BL2500 Firmware Kernel and the ISaGRAF I/O boards and sample files to be installed in the ISaGRAF directory.
- **EmbeddedPLCUtility\_v1.03\_3-0237G**: Microsoft Windows Installer of the EMBEDDED PLC Utility. The EMBEDDED PLC Utility allows you to load or upgrade the EMBEDDED PLC Firmware Kernel to a Rabbit-based Target. The installation of this software is optional and is described in Chapter 6.

These software products can also be downloaded (in ZIP format) from the OEM Technology Solutions website [www.oem.net.au](http://www.oem.net.au).

## 2.2.1 Installing ISaGRAF Workbench V3.50

Use the following procedure to install the EMBEDDED PLC - ISaGRAF Workbench V3.50 from the CD-ROM:

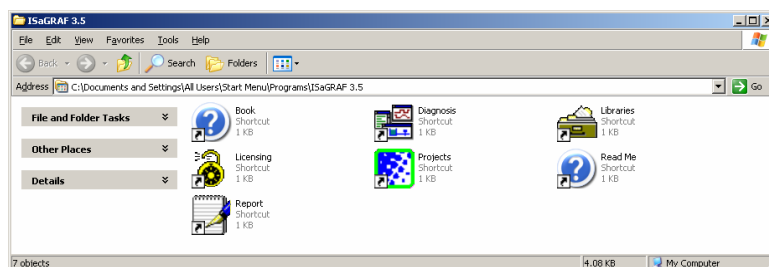
1. Insert the CD-ROM and open the **ISaGRAF\_V3.50** folder.
2. Double-click on **ISAGRAF.EXE** to launch the ISaGRAF installation wizard. Follow the instructions provided by the wizard to proceed with the installation.



### Note:

It is recommended that the ISaGRAF Workbench be installed on a new directory to avoid confusing files with files from other ISaGRAF versions.

3. Once all the ISaGRAF files have been copied, the following group is added to your Programs group:



## 2.2.2 Installing EMBEDDED PLC Board Support Package (BSP) for BL2500

Use the following procedure to install EMBEDDED PLC BSP for BL2500 from the CD-ROM:

1. Go to **BL2500C\_BSP\_v1.04\_9-0003-006** folder located in the root directory of the CD-ROM.
2. Open the **ISaGRAF** folder and double-click on **INSTALL.EXE** to launch the ISaGRAF installation wizard. Enter the location where the ISaGRAF Workbench was installed (default **c:\ISAWIN**) and press **Install**. The installation wizard will update the ISaGRAF main directory with the I/O boards, C functions, C function blocks and sample applications for the EMBEDDED PLC BL2500 target.

## 2.3 LICENSING THE ISAGRAF WORKBENCH

The ISaGRAF V3.50 Workbench you just installed runs for a trial period of 30-days before requiring licensing. When not licensed, you can not create, modify or export IEC programs to a library, or export variables to ASCII text file.

You can license ISaGRAF using either hardware or software license. When using a hardware license, a dongle which you place on the parallel or USB port of your PC is delivered pre-programmed with the selected feature set. When using software license, you need to obtain a set of registration keys.

The software license is specific to a PC (hardware configuration and Operating System). Therefore if you re-install the Operating System and then re-install ISaGRAF Workbench a new software license will be required. However, it is possible to transfer a software license from one PC to another. Section A.1.2.2 of the ISaGRAF User's Manual (See [2]) and the License Manager on-line help describe in detail how to transfer a software license.

The EMBEDDED PLC Application Kit entitles you to a 32 I/O points software license. To obtain the software license follow these instructions:

3. Open the ISaGRAF License Manager (**Start menu** → **Programs** → **ISaGRAF 3.5** → **Licensing**). On the Available Components select **ISaGRAF 3 Software License** and press **Add** button. Click Option **32** on **Number of IO Variables** box and press **OK** button. The Setup Code **SET: WDX32-WDE15** will be displayed in the **Setup Code** box.

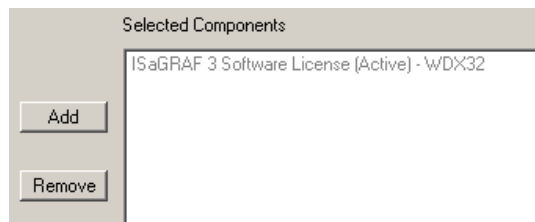
Setup Code:	SET:WDX32-WDE15
User Code 1:	286474670
User Code 2:	849097
Proceed...	

4. If you have access to the Internet and have an e-mail account:
  - a) Press **Proceed...** button. A new mail message of your default e-mail client (such as Microsoft Outlook) will be displayed. Fill out the information on the message body: **Contact details** and **Workbench Serial Number** (located on the License Registration Form). Once you have filled out all the information, send the e-mail to [support@oem.net.au](mailto:support@oem.net.au). The e-mail client application must be running before pressing **Proceed...** button.
  - b) Alternatively, if instead of e-mail client (such as Microsoft Outlook) you use web-based email or a command line e-mail (such as pine), compose manually a new message indicating the **Workbench Serial Number** that appears in the License Registration Form, **User Code 1 and 2**, and **Contact details**, and send it to [support@oem.net.au](mailto:support@oem.net.au).
5. Alternatively, if you do not have an e-mail address or access to the Internet, copy the **User Code 1** and **User Code 2** into the **ISaGRAF License Registration Form** that comes in the Application Kit and send the completed form to OEM Technology Solutions by fax (Fax Number: +61 2 9966 9429).
6. OEM Technology Solutions will send you the ISaGRAF software license within two business days of receiving the completed Form. Press **Close** button to close the License Manager.

### 2.3.1 Adding the software license

The ISaGRAF software license consists of two sets of 4 Registration Keys. Upon reception of the Registration Keys, open License Manager and follow these instructions:

1. On the Available Components select **ISaGRAF 3 Software License** and press **Add** button. Select the purchased number of I/O points to license (32 if you purchased the EMBEDDED PLC Application Kit) and press **OK** button.
2. Enter the first set of Registration Keys and press **Register** button. Setup Code will change to **SET: WDE15**. Enter the second set of Registration Keys and press **Register** button again. In the Selected Components **ISaGRAF 3 Software License** will be displayed as **Active**. Press **Close** button to close the License Manager. Congratulations! Your ISaGRAF Workbench is now licensed.



#### Note:

If you want to purchase a hardware license or upgrade your current software license, please contact OEM Technology Solutions ([sales@oem.net.au](mailto:sales@oem.net.au)) for pricing information and payment options. When you purchase a software license it is very important to include the following information in your Purchase Order:

- Setup Code, User Code 1 and User Code 2.  
To obtain these codes open the ISaGRAF License Manager (**Start** menu → **Programs** → **ISaGRAF 3.5** → **Licensing**). On the Available Components select **ISaGRAF 3 Software License** and press **Add** button. Select the desired number of I/O points to license (128, 256 or Unlimited) and press **OK** button. The Setup and User codes appear on the **License Manager** window. If you press **Proceed...** button, a new e-mail message window is displayed (if you have an e-mail client running such as Microsoft Outlook). You can fill out the required information and send that e-mail to obtain license pricing and payment information.
- Contact details (Company, Name, Address, Telephone, Fax and e-mail).

### 2.3.2 Adding a hardware license (optional)

When using a hardware license (dongle) on Windows 2000/XP systems, you must install the Sentinel driver in order for the dongle to be seen.

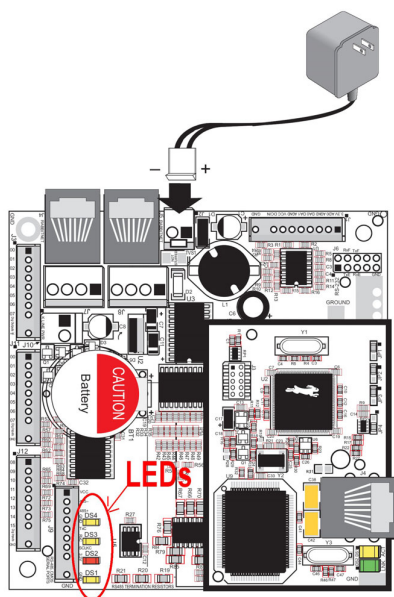
Open the `ISaGRAF_v3.50\Sentinel1` folder (located in the root directory of the CD-ROM) and double-click on `Setup.exe`. Follow the on-screen instructions to install the driver. After the installation is completed, connect the dongle to a parallel or USB port and open the License Manager (**Start** menu → **Programs** → **ISaGRAF 3.5** → **Licensing**). On the Selected Components list, the **ISaGRAF 3 Hardware license** will be shown active.

## 2.4 BL2500 CONNECTIONS

### 2.4.1 Connect a Power Supply

1. Connect the AC adapter to header J2 on the BL2500 as shown in Figure 1. Match the friction lock tab on the friction-lock connector to the back of header J2 on the BL2500 as shown. The friction-lock connector will only fit one way. Plug in the AC adapter.

Application Kits sold outside North America or Australia include a friction-lock connector that can be connected to header J2 on the BL2500. Connect the leads from your power supply to the friction-lock connector to preserve the polarity indicated in the figure. The power supply should deliver 8 – 40 VDC at 500 mA.



**Figure 1: Power Supply Connection**

2. Plug the AC Adapter. DS1 (yellow) and DS2 (red) LEDs indicate the Firmware Kernel status after the board has been powered up. If after 10 seconds DS2 (red) is turned off and DS1 (yellow) starts blinking, the Firmware Kernel is licensed and active.

If DS2 (red) remains turned on during more than 10 seconds, it indicates that Kernel requires licensing. If DS1 and DS2 are off after powered-up, it indicates that the board has no EMBEDDED PLC Firmware Kernel loaded. In both cases, contact your local distributor.

### 2.4.2 Connect an Ethernet Cable

The BL2500 that comes in the EMBEDDED PLC Application Kit has the Firmware Kernel loaded, licensed and configured. The default factory configuration is:

**Modbus Slave Number = 1**

**Use Modbus TCP**

**IP Address = 192.168.1.100**



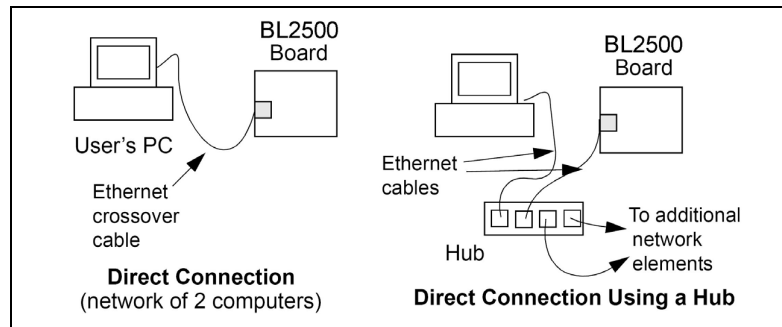
**Netmask** = 255.0.0.0

**Default gateway** = 192.168.1.1

If you want to change the default values, go to section 6.1.4 for instructions how to change the configuration of the Target PLC. The following instructions will guide you on how to connect the Target PLC to the Workbench using TCP/IP.

There are two ways of connecting the Target PLC to your PC via Ethernet (see Figure 2):

- Using a crossover Ethernet cable (provided in the EMBEDDED PLC Application Kit) to connect directly the Target PLC to your PC; or,
- If your PC is currently connected to an Ethernet hub, use a straight-through Ethernet cable (not provided in the EMBEDDED PLC Application Kit) to establish an Ethernet connection to the BL2500 from the hub.



**Figure 2: Ethernet connections**

When your PC is connected directly to the BL2500 via an Ethernet connection, you need to set (or change) the TCP/IP parameters of your computer in order to establish a proper connection with the BL2500. If you require changing the TCP/IP configuration of the BL2500, go to section 6.1.4 for instructions how to change the configuration of the Target PLC.

To configure your PC with an IP address and netmask suitable for establishing a TCP/IP connection with a pre-configured BL2500 Target PLC, follow these instructions (you might need Administrator privileges to perform these steps):

1. Go to Control Panel (**Start button** → **Settings** → **Control Panel**) and start **Network Connections**.
2. Select **Local Area Connection** and choose **Properties (File menu** → **Properties)**.
3. Select **Internet Protocol (TCP/IP)** and press **Properties** button.
4. Click on **Use the following IP Address** and fill in the following fields:



Use the following IP address:	
IP address:	192 . 168 . 1 . 101
Subnet mask:	255 . 255 . 255 . 0
Default gateway:	192 . 168 . 1 . 1

5. Press **OK** button to close the **Internet Protocol (TCP/IP) Properties** window. Press **OK** button to close the **Local Area Connection Properties** and to update the new TCP/IP values.
6. To verify the communication between your PC and the BL2500 use the `ping` command. Open a **Command Prompt** window (**Start button** → **Programs** → **Accessories** → **Command Prompt**) and type

```
C:\>ping 192.168.1.100
```

The command output should display the replies from the Target PLC.

### 2.4.3 Connect an RS232 Cable (optional)

If your Target PLC is configured to Use Modbus TCP you can go straight to Section 2.5. If your Target PLC is configured to **Use RS232**, connect a serial cable to a COM port of the PC and to the RS232 port E of the BL2500. The RS232 cable must follow the diagram shown in Figure 3. A serial cable is not provided in the EMBEDDED PLC Application Kit.

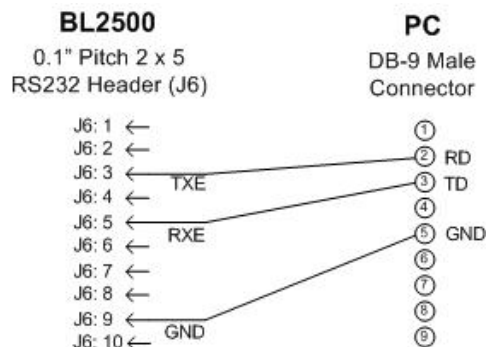
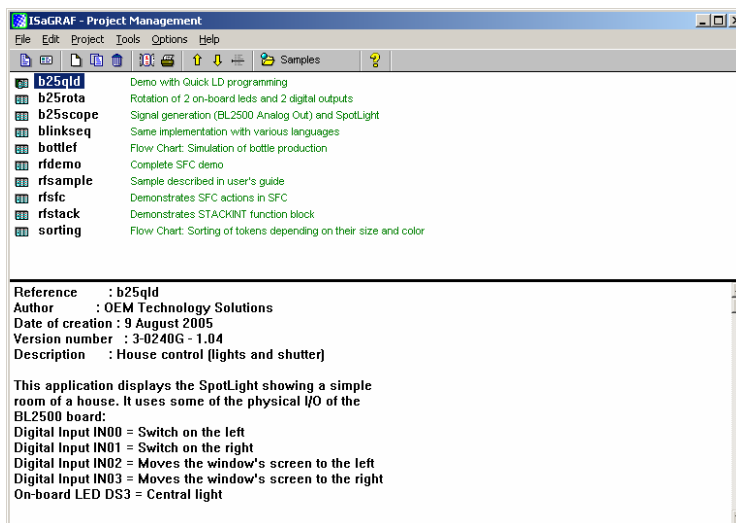


Figure 3: PC <-> BL2500 RS232 connection

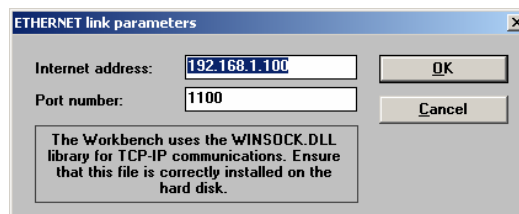
## 2.5 RUNNING A SAMPLE APPLICATION

Once you have established connection between your PC and the Target PLC, follow these instructions to run the **sorting** sample application. This sample application displays a SpotLight which shows different tokens being sorted depending on size and colour (see the Project Description at the bottom of the Projects Management window). This PLC application was written in Flow Chart.

1. Start ISaGRAF Workbench by double-clicking on the ISaGRAF 3.5 shortcut on your desktop or **Start** button → **Programs** → **ISaGRAF 3.5** → **Projects**. On the **Projects Management** window, double-click on the **sorting** project.



2. On the **SORTING - Programs** window select **Debug** menu → **Link setup**. On the **PC-PLC link parameters** window check the **Target Slave Number** is set to 1 and **ETHERNET** communication port is selected. Press **Setup** button and check the IP address of the BL2500 target is set to 192.168.1.100. Press **OK** button to close this window. Press **OK** button to close the PC-PLC link parameters window.






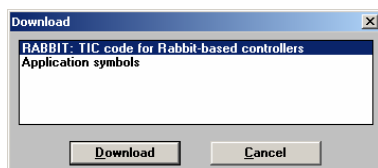
If you are using RS232, on the **PC-PLC link parameters** window select COM port and press **Setup** button. Select the baud-rate (19200 to 600) depending on the current value of the Target PLC.

3. Select **Debug** menu → **Debug** to open the **Debugger** window. The **Debugger** window is displayed with a **No application** message.



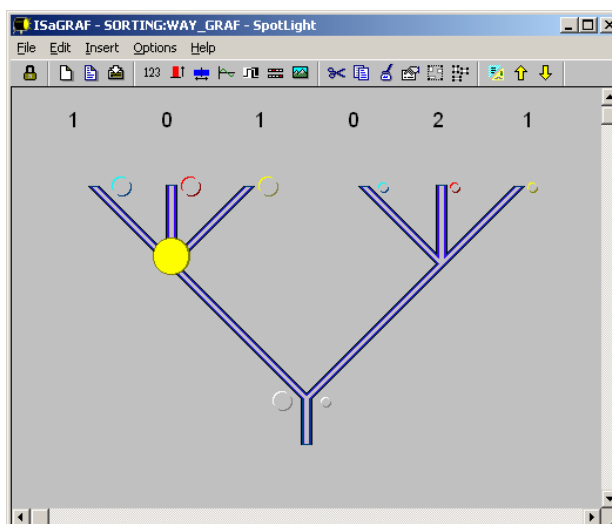
**Note:**

If the **Debugger** window shows that an application is currently running ('<application name>' active) on the Target PLC, press **Stop** button  on the toolbar to stop the application before downloading a new one. You can also stop the application from the **Debugger** window menu (**File** menu → **Stop application**).



4. On **Debugger** window, select **File** menu → **Download**. Select "RABBIT: TIC code for Rabbit-based controllers" on the Download window and press **Download** button.

5. A progress bar on the **Debugger** window will show the progress of the downloading process. Once the downloading is completed, the application runs immediately and the **SpotLight** window shown below is displayed.



Troubled? If you experienced problems running this application, such as an error message "Cannot install communication" or "Cannot start download – target not ready", follow this checklist:

1. Make sure that the TCP/IP connection between the Target PLC and your PC is alive (use ping command). See Section 2.4.2 on how to configure TCP/IP parameters.
2. If connection is alive, repeat accurately the step-by-step instructions in this Section. Remember to put correctly the Target Slave Number and the IP address of the Target PLC in the **PC-PLC link parameters** window (Step 2).
3. If the Target PLC has already an application running, stop it before downloading a new one.

If you still can not run this sample application, go to Chapter 7 (FAQ and Troubleshooting) which contains more information about how to troubleshoot your particular problem.

## 2.6 WHERE DO I GO FROM HERE?

The next chapter describes how to run the other sample applications and step-by-step instruction on how to create a simple PLC application.

The ISaGRAF User's Manual and the ISaGRAF Workbench on-line help contain a complete description of the Workbench features and capability, as well as a complete PLC programming languages reference. The User's Manual can be found in the Documentation folder of the CD-ROM (**ISaGRAF.pdf**).

### 3. RUNNING SAMPLE APPLICATIONS

The ISaGRAF Workbench provides two modes of running PLC applications:

- Simulation mode. The PLC application runs entirely on the PC without the need to have a Target PLC connected. This mode is very useful to perform complete structural and functional tests prior to deploying the application to the target hardware.
- Real mode. The PLC application is first downloaded to a Target PLC and then the Target PLC executes the application. The Workbench monitors the program execution as well as the status of internal and I/O variables.

The EMBEDDED PLC – ISaGRAF V3.50 Workbench plus the EMBEDDED PLC BL2500 BSP, includes several sample applications. There are three types of sample applications:

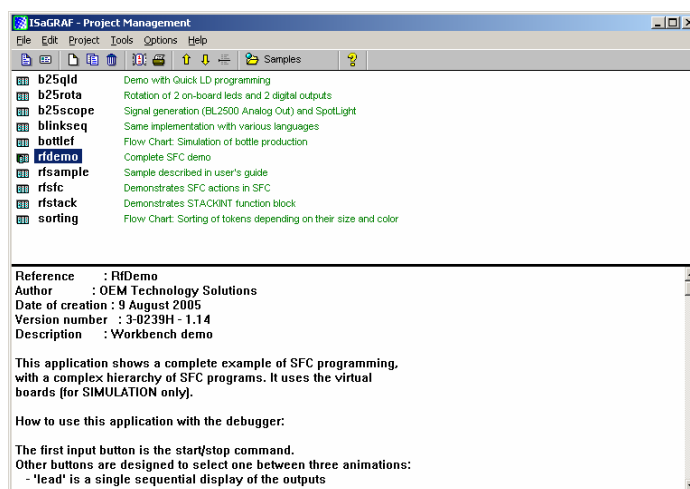
- Sample applications that use Virtual Boards (xai8, xao8, xbi8, xbo8, xmi8, xmo8). These applications can run ONLY in simulation mode:
  - **blinkseq**: Same implementation with various languages.
  - **rfdemo**: Complete SFC demo.
  - **rfsample**: Sample described in ISaGRAF User's Guide (see [2]).
  - **rfsfc**: Demonstrates SFC actions in SFC.
- Sample applications that use internal variables only. These applications can be simulated or downloaded to the Target PLC. The Target PLC does not need to be connected to physical I/Os:
  - **bottlef**: Flow Chart: Simulation of bottle production.
  - **rfstack**: Demonstrates STACKINT function block.
  - **sorting**: Flow Chart: Sorting of tokens depending on their size and colour.
- Sample applications pre-configured to use BL2500 I/O boards. These applications can be simulated or downloaded to the BL2500 Target PLC and requires that the Target is connected to physical I/Os:
  - **b25qld**: Demo with Quick LD programming.
  - **b25rota**: Rotation of 2 BL2500 on-board LEDs (DS3 and DS4) and 2 digital outputs.
  - **b25scope**: Signal generation (BL2500 Analog Out) and SpotLight.

A description of each of the sample applications appears at the bottom of the ISaGRAF Project Manager.

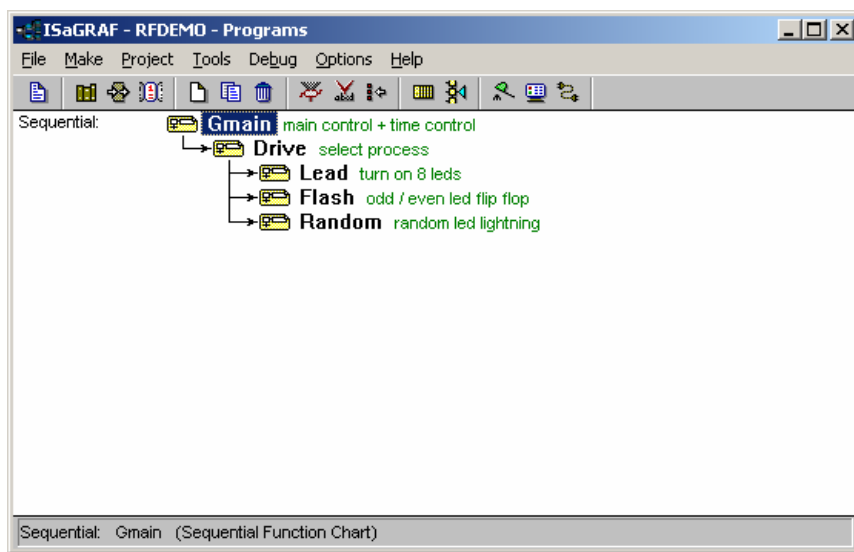
#### 3.1 RUNNING APPLICATIONS IN SIMULATION MODE


Use the following procedure to run any sample application in simulation mode:

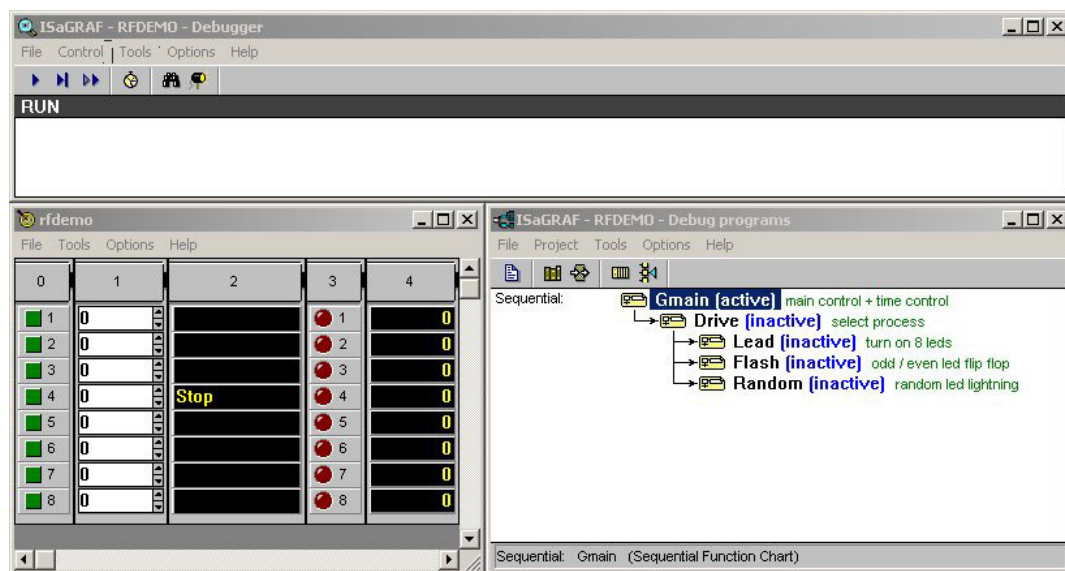
1. Open the ISaGRAF Project Management by double-clicking on the ISaGRAF Projects icon on your Desktop or selecting **Start** menu → **Programs** → **ISaGRAF 3.5** → **Projects**.



- Double-click on the sample application (for example, **rfdemo**) to open the **Programs Manager** window.



- On the **Programs Manager** window, select **Debug** → **Simulate** (or press **Simulate** button  on the toolbar). The **Debugger**, **I/O simulation** and **Debug program** windows are displayed.



- The **I/O simulation** window shows the I/O boards used by the application (Boards 0 to 4). Board 0 (column 0) has 8 digital inputs; Board 1 (column 1) has 8 analog inputs; Board 2 (column 2) has 8 message (strings) outputs; Board 3 (column 3) has 8 digital outputs and Board 4 (column 4) has 8 analog outputs. On Board 0 (column 0) click on Input 1 and Input 4, a message **start** and **Lead** are displayed in message outputs 4 and 5 respectively; and Board 3 will show the LED outputs being turned ON in sequence. On the **Debug programs** window the **Drive** and **Lead** programs change to active state. Unset the digital input 4 and set any of the digital inputs 5 (Flash) or 6 (Random).
- To close the simulation of the application, close the **Debugger** window. Close the **Programs** window.
- Try with other sample applications such as the one listed in the introduction of this chapter. All the sample applications can run in simulation mode.

### 3.2 RUNNING APPLICATIONS THAT USE INTERNAL VARIABLES ONLY

The Target PLC and your PC must be connected through Ethernet, RS232 or RS485. Use the following procedure to run any sample application that uses only internal variables:

1. Open the ISaGRAF Project Management by double-clicking on the ISaGRAF Projects icon on your Desktop or selecting **Start** menu → **Programs** → **ISaGRAF 3.5** → **Projects**. On the **Projects Management** window, double-click on the **bottlef** project.
2. On the **BOTTLEF - Programs** window select **Debug** menu → **Link setup**. On the **PC-PLC link parameters** window enter the **Target Slave Number** (corresponds to the Modbus Slave number of the Target PLC) and the Communication port (**ETHERNET** for Modbus TCP or **COM** for Modbus RTU over RS232/RS485):

- a) If **ETHERNET** is selected press **Setup** button and enter the IP address of the target (default is 192.168.1.100). Press **OK** button. Press **OK** button to close the **PC-PLC link parameters** window



#### Caution:

Do not change the port number from 1100 otherwise the Ethernet communication with the ISaGRAF Workbench will not work. This port is used exclusively by the communication between ISaGRAF Workbench and the EMBEDDED PLC target.


- b) If serial **COM** port is selected (COM1 – COM4) press **Setup** button and select either 19200, 9600, 4800, 2400, 1200 or 600 baud rate depending on the current configuration of your EMBEDDED PLC target.

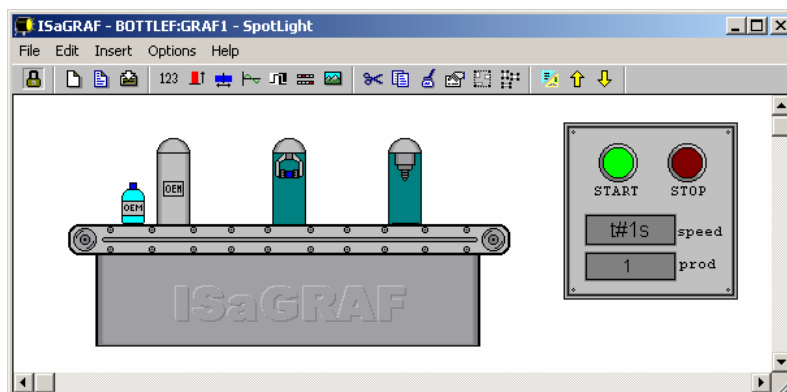


#### Note:

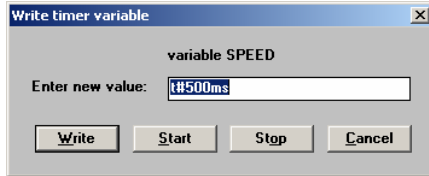
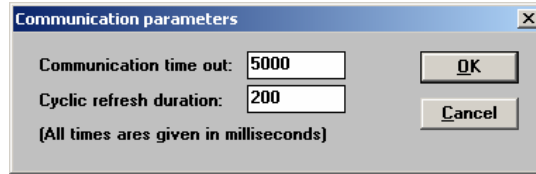
The EMBEDDED PLC Kernel supports baud rates from 19200 to 600. The other parameters are fixed: no parity, 8 data bits, 1 stop bit and no flow control.

Note also that ISaGRAF supports serial ports COM1 to COM4. If you are using a USB-to-serial converter cable check that the com port assigned is between COM1 and COM4. If not, change the serial port settings on your Windows Operating System (see Section 7.2). Many USB-to-serial converters are assigned to COM5 port or higher after its installation.

3. Select **Debug** menu → **Debug** to open the **Debugger** window. If **Debugger** window displays “<application name> active” message, stop the current application that is running by pressing the Stop button  on the toolbar or select **File** menu → **Stop application**. A “No application” message is displayed.
4. Download the bottlef application by selecting **File** menu → **Download**. Select “RABBIT: TIC code for Rabbit-based controllers” on the **Download** window and press **Download** button. A progress bar on the **Debugger** window will show the progress of the downloading process. Once the downloading is completed the application runs immediately and the **SpotLight** window is displayed. In the **SpotLight**, double-click on the **START** button and press **TRUE** button. The bottle production will start.



- On the **Debugger** window, select **Options** menu → **Parameters**. Change the **Cyclic refresh duration** value to 200. This value corresponds to the refresh rate of the SpotLight. Press OK button.



- On the **SpotLight** window, double-click on the **t#1s** box. Change the variable SPEED value to **t#200ms** and press **Write** button. The bottle production will speed up by a factor of two.

- Repeat this procedure for the **rfstack** application.

### 3.3 RUNNING APPLICATIONS THAT USE BL2500 INPUTS AND OUTPUTS

#### 3.3.1 Creating I/O connectors

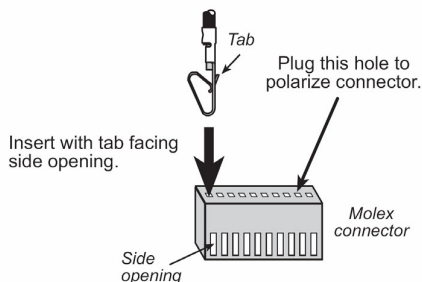
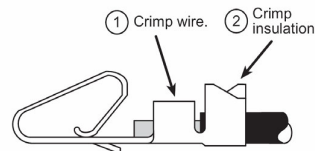
The EMBEDDED PLC Application Kit comes with a bag of cables, connectors and crimp terminals in order to connect to the I/Os of the BL2500.

To create an I/O connector you will need to assemble a wiring harness using the friction-lock connectors and crimp terminals supplied with the EMBEDDED PLC Application Kit. In addition, you will need:

- Wire—22 to 30 AWG (0.33 mm<sup>2</sup> to 0.049 mm<sup>2</sup>) for the 0.1" crimp terminals, 22 to 26 AWG (0.33 mm<sup>2</sup> to 0.13 mm<sup>2</sup>) for the 0.156" crimp terminals
- Wire cutters and wire insulation stripper
- Crimp tool (pliers may be used, but a crimp tool provides a better crimp with a stronger force)

Follow these steps to build your wire harness:

- Prepare a few lengths of wire about 30 cm (12") long. The wires should have different colours of insulation to facilitate identifying the connections.
- Trim about 2 – 3 mm (0.1") of insulation from your wire.
- Position the wire in the crimp terminal as shown in the figure.
- Use a crimp tool or pliers to first crimp the bare wire, then the insulation as shown in figure.



- Insert the crimp terminals with wires into the friction-lock connector with the tab on the crimp terminal facing the opening on the side of the friction-lock connector. Insert the crimp terminal until the tab snaps into place in the side opening.
- Repeat these steps until all the wires and crimp terminals have been assembled.


#### Note:

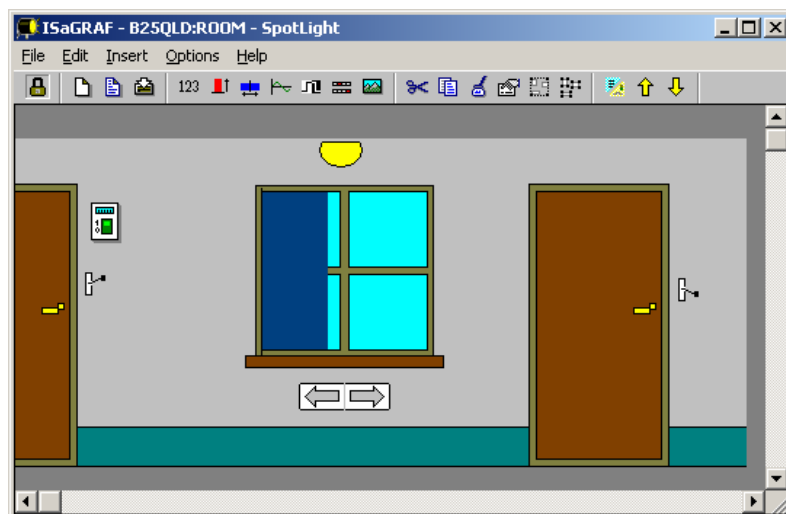
On 10-pin friction-lock connectors, insert a plug into the hole indicated in last figure to polarize your connector to help prevent offsetting the connector by one pin when you attach it to your BL2500. Polarizing plugs are not included in EMBEDDED PLC Application Kit.



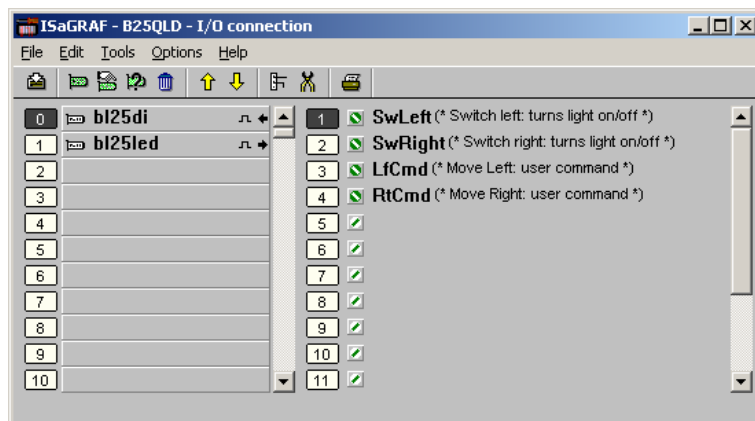
### 3.3.2 Downloading and running the ISaGRAF application

Use the following procedure to download a sample application (**b25qld**) to the BL2500 Target that uses physical I/Os. The Target PLC must be running a licensed EMBEDDED PLC Firmware Kernel and be connected to 4 digital inputs (use the procedure above to create an I/O connector). It also assumes that the Target is connected to the PC either via Ethernet or serial port.

1. Open the ISaGRAF Project Management by double-clicking on the ISaGRAF Projects icon on your Desktop or selecting **Start** menu → **Programs** → **ISaGRAF 3.5** → **Projects**. On the **Projects Management** window, double-click on the b25qld project.
2. Select **Debug** → **Link setup** (or press **Link Setup**) and configure the Target PLC ↔ PC link. Follow the guidelines on Step 2 of the previous section.
3. Select **Debug** → **Debug** (or press **Debug**) to open the **Debugger** window. If an application is running, stop it (press **Stop** button  on the toolbar). On the **Debugger** window select **File** → **Download** to download the b25qld application to the target. A progress bar on the **Debugger** window shows the progress of the download process. Once the downloading is completed the application starts running and the following **SpotLight** window is displayed.



4. The Digital inputs IN00 and IN01 of the BL2500 are wired as the Left and Right switches on the b25qld application. The BL2500 on-board LED DS3 is the output of the light. The BL2500 digital inputs IN02 and IN03 move the window's screen to the left and right respectively.
5. To check the I/O connections, close the **Debugger** window and on the **B25QLD – Programs** window select **Project** → **I/O connection**. Check the wiring of the channels.



Follow the same procedure to run the b25rota application. This application will turn ON the BL2500 on-board LEDs (DS3 and DS4) in sequence.

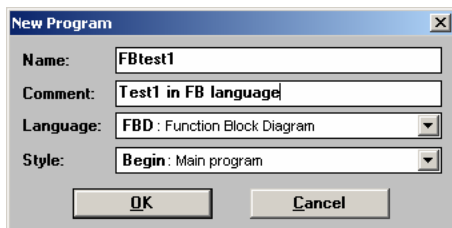
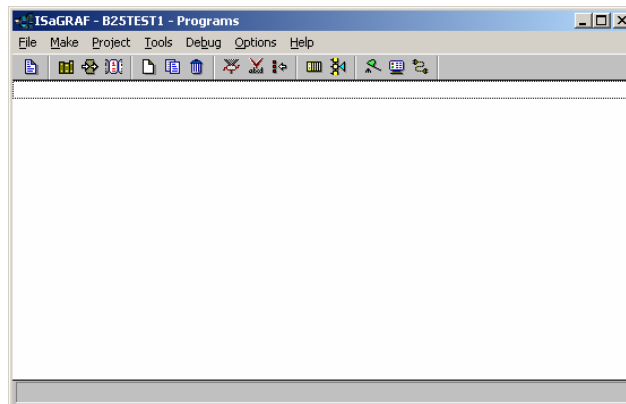
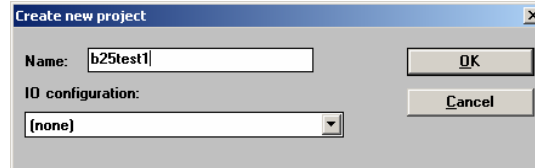
### 3.4 CREATING A NEW PLC APPLICATION

The following Section describes how to use the ISaGRAF Workbench to create simple PLC applications using the 5 IEC 611131-3 PLC programming languages (FBD, LD, ST, IL and SFC) and Flow Chart that later you will download to the BL2500 Target PLC. The Target PLC must be connected to physical I/Os. It also assumes that the Target is connected to the PC either via Ethernet or serial port. **To create (or modify) PLC applications the ISaGRAF Workbench must be licensed.**

The PLC application that is written using 6 different languages, implements a simple Boolean operation (XOR) between digital input IN00 and IN01 (SW1 and SW2 Boolean variables respectively). The DS3 LED (LED1 Boolean output variable) is used as the output.

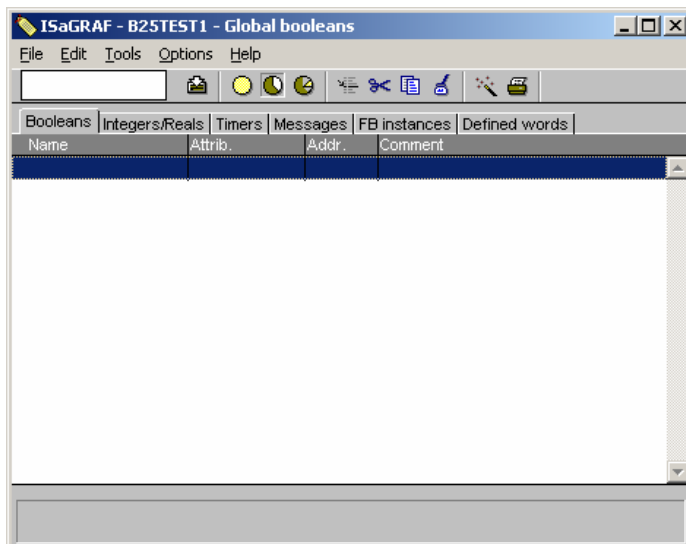
#### 3.4.1 Using Function Blocks Diagrams

1. Open the ISaGRAF Project Management by double-clicking on the ISaGRAF Projects icon on your Desktop or selecting **Start menu → Programs → ISaGRAF 3.5 → Projects**. On the **Projects Management** window, select **File menu → New**.
2. On the **Create new project** window, enter the name of the project (for example b25test1) and press **OK** button. The name of project should not exceed 8 characters. The b25test1 project is then listed in the **Projects Management** window.
3. Select **Edit menu → Set comment text**. Enter a brief description of this project and press **OK** button. This description will be displayed next to the project name in the **Projects Management** window.
4. Double-click on **b25test1** project. An empty **B25TEST1 – Programs** window is displayed.

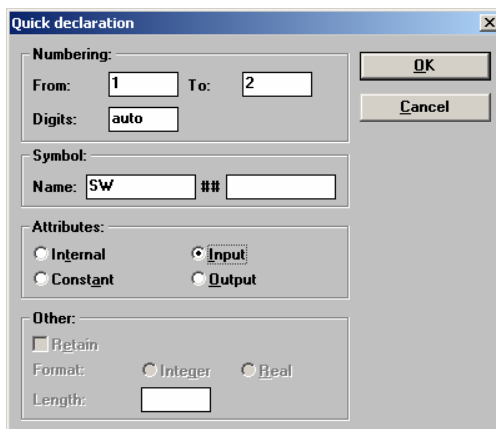


5. Select **File menu → New**. On the **New program** window enter the name of the program (for example, FBtest1); a brief comment; select the Language to **FBD**; select **Begin** Style and press **OK** button. The FBtest1 program is displayed in the **B25TEST1 – Programs** window.

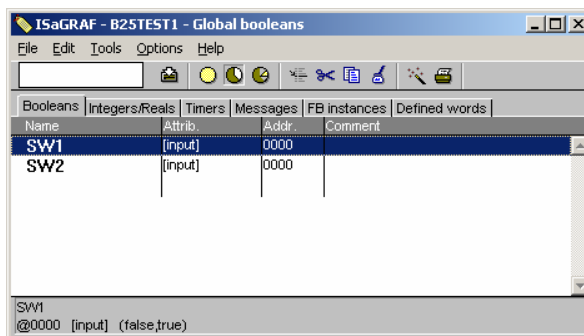
6. On the **B25TEST1 – Programs** window select **File menu → Dictionary** to open the **Dictionary** window.




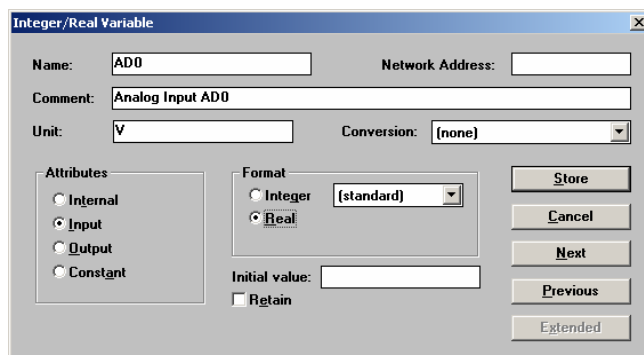
7. Select **Tools** menu → **Quick declaration**. Enter Numbering from 1 to 2, Symbol name SW and Attributes = Input as shown in figure below. Press **OK** button.







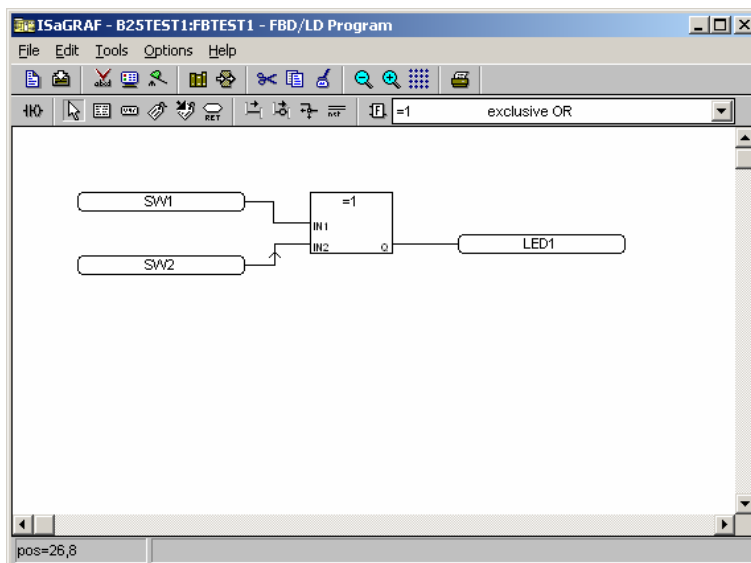
8. On the **Dictionary** window, the SW1 to SW2 variables are listed.




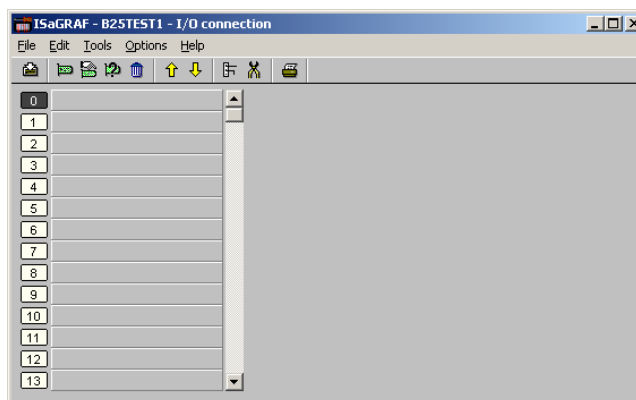
9. On the B25TEST1 Dictionary double-click on the empty row. Enter the name LED1 and select it as output.
10. On the **Dictionary** window, select **Integers/Reals** tab. Press **Insert objects** button  or select **Edit** menu → **New**. Enter the following information on the **Integer/Real Variable** window: Name = AD0, Comment = Analog Input AD0, Unit = V, Attributes = Input and Format = Real. Press **Store** button. Repeat this step to create the analog output variable (Name = DA1, Comment = Analog Output DA1, Unit = V, Attributes = Output and Format = Real). Press **Cancel** to close the **Integer/Real Variable** window.




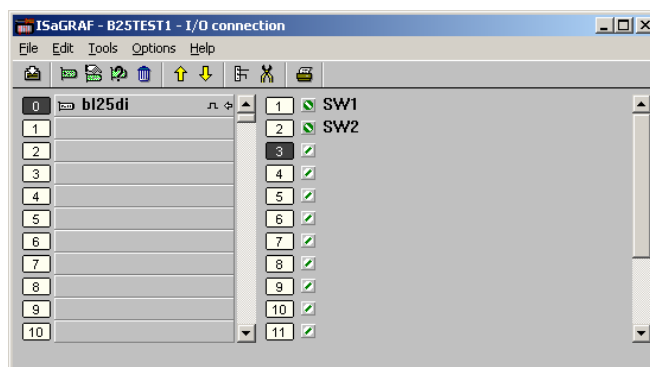
11. Save the current dictionary by selecting **File** menu → **Save**. Close the **Dictionary** window.
12. On the **B25TEST1 – Programs** window double-click on **FBtest1** program. Press **Insert variable** button  on the toolbar and click on the working area. On the Select variable window select SW1 and press **OK** button. SW1 variable box is drawn on the working area. Place SW2 and LED1 variables following the same procedure.
13. Select on the **Function blocks** combo box  =1 exclusive OR the exclusive OR (=1) function block and click on the working area. The exclusive OR (=1) function block is displayed.
14. Select button  on the toolbar and move SW1 and SW2 variables to the left of the function block; also move the LED1 variable to the right of the function block.
15. Click on **Draw connection line** button  on the toolbar and press left mouse button on the SW1 variable and drag the line towards the function block. A connection line will be drawn between SW1 and IN1 of the function block. Repeat the same procedure to connect SW2 with IN2 of the function block and LED1 with Q of the function block (connection lines are dragged always from left to right).



16. Save the program by selecting **File** menu → **Save**. Press **OK** button on the **Update diary** window. Close the **FBtest1 – FBD/LD Program** window.
17. On the **B25TEST1 – Programs** window click on I/O connection button  on the toolbar.

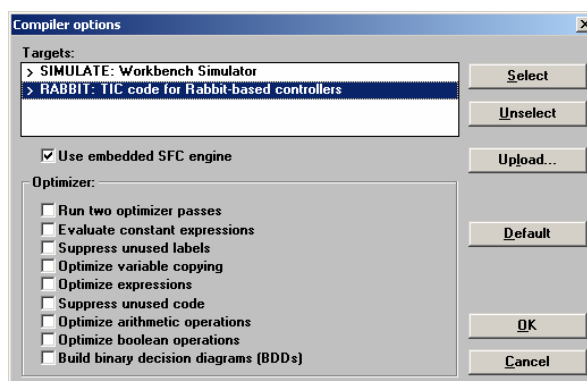


18. Double-click on Slot **0** or press **Set board/equipment** button  on the toolbar. Select **bl25di** board (BL2500 Digital Inputs) and press **OK** button. The bl25di I/O board is placed in Slot 0. Double-click on Channel **1**. On the **Connect I/O channel** window press **Connect** button several times until all the free variables are connected. Press **Close** button.

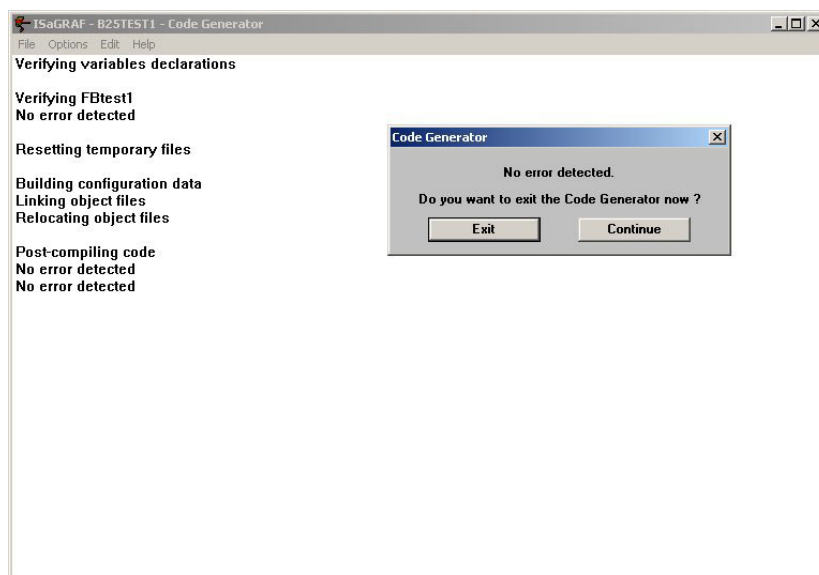



19. Double-click on Slot **1** and select **bl25led** (BL2500 on-board LEDs) board. Double-click on Channel **1** and connect the free variable LED1. Press **Close** button.
20. Double-click on Slot **2** and select **bl25ai** (BL2500 Analog Input) board. Double-click on Channel **1** and connect the **AD0** variable. Press **Close** button.
21. Double-click on Slot **3** and select **bl25ao** (BL2500 Analog Output) board. Double-click on Channel **1** and connect the **DA1** variable. Press **Close** button. Select **File** menu → **Save** (or press **Save** button on the toolbar) to save the I/O connection. Close the **I/O connection** window.
22. Before downloading the PLC application to the Target PLC, the application needs to be compiled. On the **B25TEST1 – Programs** window, select **Make** menu → **Compiler Options** to check that **RABBIT: TIC code for Rabbit-based controllers** is selected. Press **OK** button.

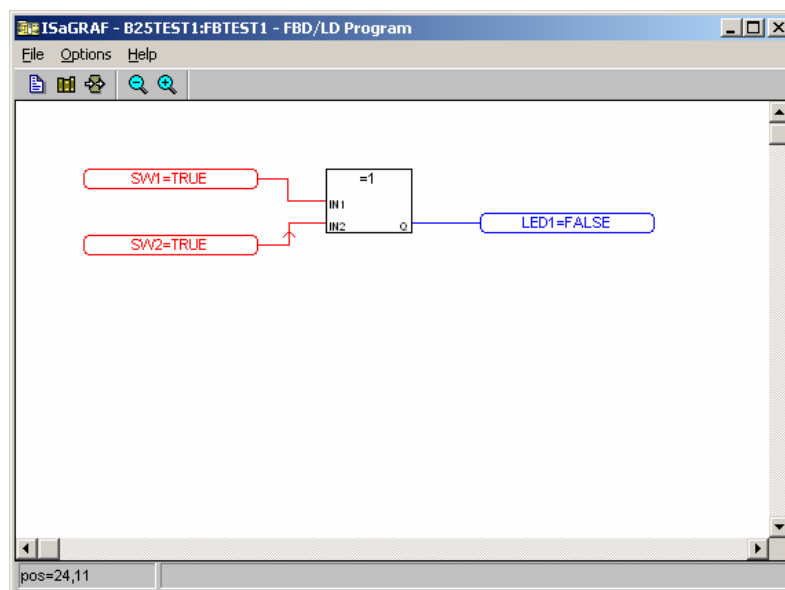
If RABBIT target is not selected, click on RABBIT target and press **Select** button. Alternatively you can double-click on RABBIT target.



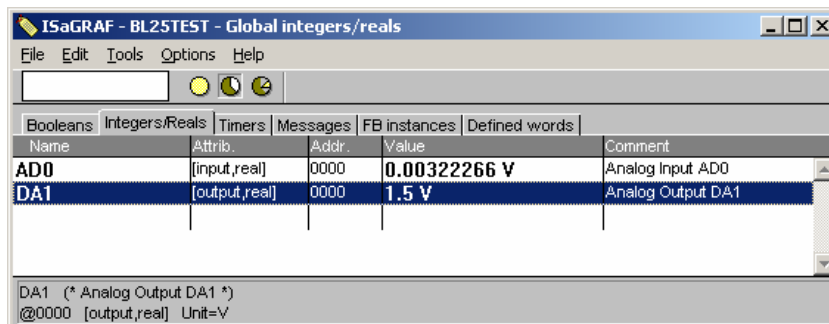
23. Select **Make** menu → **Make application** to compile the PLC application. The **Code generator** window is displayed. Press **Exit** button.



24. Select **Debug** → **Link setup** (or press **Link Setup**) and configure the Target PLC ↔ PC link. Follow the guidelines on Step 2 of Section 3.2.
25. Select **Debug** → **Debug** (or press **Debug**) to open the **Debugger** window. If an application is running, stop it (press **Stop** button  on the toolbar). On the **Debugger** window select **File** → **Download** to download the b25test1 application to the Target PLC. A progress bar on the **Debugger** window shows the progress of the download process. Once the downloading is completed the **B25TEST1 – Debug** programs window is displayed (On the **Debugger** window the application state will be **RUN**).
26. Double-click on **FBtest1** program. The **FBTEST1 – FBD/LD Programs** window is displayed with the variables in BLUE or RED colour depending on its current state, FALSE or TRUE respectively. If the digital input IN00 of the BL2500 is short circuited, SW1 is FALSE and LED DS3 will be turned ON as well as the state of LED1 in the Programs window will change. The PLC program implements a Boolean XOR operation on SW1 and SW2 with the result set on the LED1.



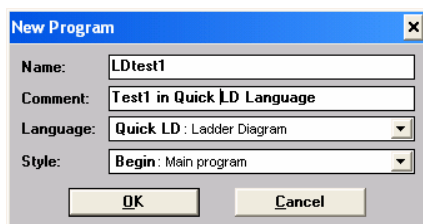
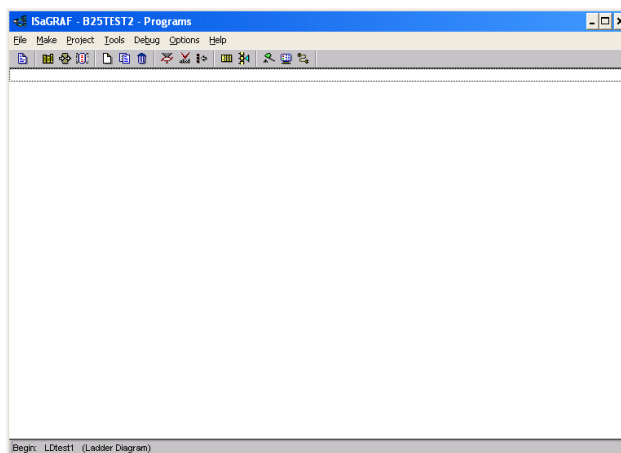
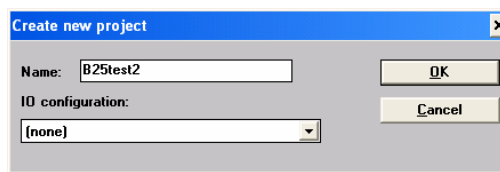
27. On the **FBTEST1 – FBD/LD Programs** window select **File** menu → **Dictionary**. On the dictionary window click on Integers/Reals tab. Double-click on DA1 variable and set its value to 1.5 V (any value in the 0 – 3.3 V range). Connect a multimeter between DA1 and AGND of the BL2500 and check that the voltage is 1.5 V.



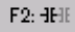
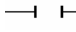
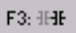
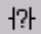


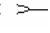
28. To stop the monitoring of the PLC application, close the **Debugger** window. The programs and dictionary windows in debug mode will be closed.

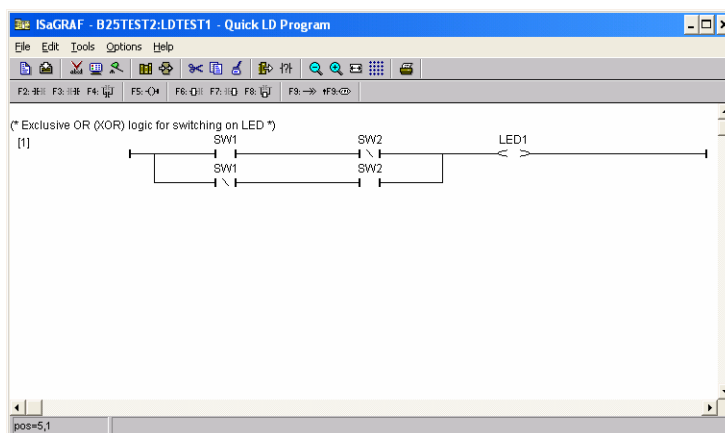
### 3.4.2 Using Quick Ladder Diagrams

1. Open the ISaGRAF Project Management by double-clicking on the ISaGRAF Projects icon on your Desktop or selecting **Start** menu → **Programs** → **ISaGRAF 3.5** → **Projects**. On the **Projects Management** window, select **File** menu → **New**.
2. On the **Create new project** window, enter the name of the project (for example b25test2) and press **OK** button. The name of project should not exceed 8 characters. The b25test2 project is then listed in the **Projects Management** window.
3. Select **Edit** menu → **Set comment text**. Enter a brief description of this project and press **OK** button. This description will be displayed next to the project name in the **Projects Management** window.
4. Double-click on **b25test2** project. An empty **B25TEST2 – Programs** window is displayed.



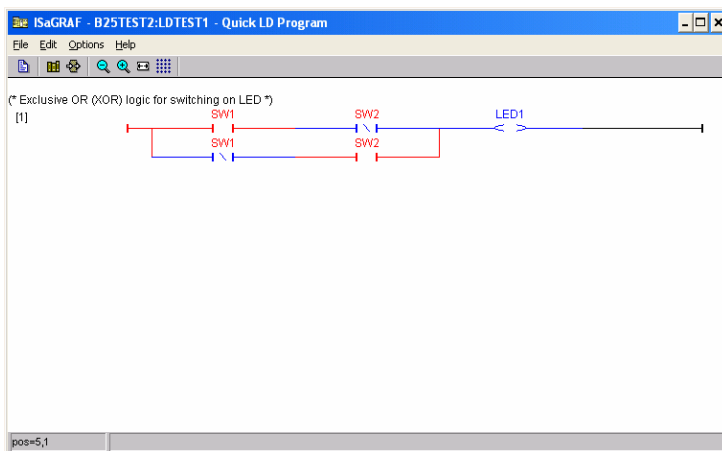
5. Select **File** menu → **New**. On the **New program** window enter the name of the program (for example, LDtest1); a brief comment; select the Language to **Quick LD**; select **Begin** Style and press **OK** button. The LDtest1 program is displayed in the **B25TEST2 – Programs** window.

6. Follow Steps 6 to 11 in Section 3.4.1 to create and populate the application's Dictionary with SW1 and SW2 Boolean input variables (connected to Channel 1 and 2 of the bl25di I/O board respectively); and LED1 Boolean output variable connected to Channel 1 of the bl25led I/O board.
7. On the **B25TEST2 – Programs** window double-click on **LDtest1** program. The Quick Ladder Diagram Editor contains an **editing grid**, a logical matrix where each cell of the matrix may contain up to one LD symbol. Press **F2: Contact on the left** button  on the toolbar to insert a **new rung**. A new rung with one contact and one coil is created.
8. Double click the **rung comment** (\* \*) cell to insert a comment such as (\*Exclusive OR logic for switching on LED\*).
9. Double click the **contact**  on the rung and select SW1 for an input.
10. With the SW1 contact selected, press **F3: Contact on the right** button  on the toolbar.
11. Double click the new contact and select SW2 variable. Click once on the **Coil/contact type** button  to negate this contact.
12. Select the **Select** button  on the toolbar. Select both contacts on the rung by clicking on one contact and dragging the mouse over to the next contact before releasing the mouse button. Press **F4: Parallel contact** button  to create two new contacts in parallel with the selected contacts.
13. Repeat steps 9 and 11 except negate the SW1 contact with the **Coil/contact type** button this time instead of the SW2 contact.
14. Double click on the **coil**  on the rung and select LED1 for an output.
15. The **LDtest1** program should now appear as follows:



16. Save the program by selecting **File** menu → **Save**. Press **OK** button on the **Update diary** window. Close the **LDtest1 – QuickLD Program** window.
17. Follow Steps 17 to 25 in Section 3.4.1 to compile the application and download it to the Target PLC.
18. Double-click on **LDtest1** program. The **LDTEST1 – Quick LD Programs** window is displayed with the variables in BLUE or RED colour depending on its current state, FALSE or TRUE respectively. Press the SW1 (short-circuit digital input IN00) and the LED1 will be turned ON as well as the state of LED1 in the Programs window will change. The PLC program implements a Boolean XOR operation on SW1 and SW2 with the result set on the LED1.



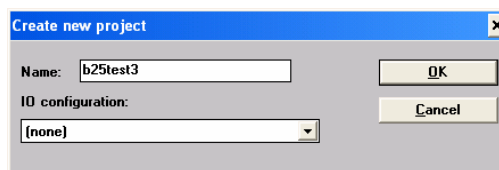


19. To stop the monitoring of the PLC application, close the **Debugger** window. The programs and dictionary windows in debug mode will be closed.

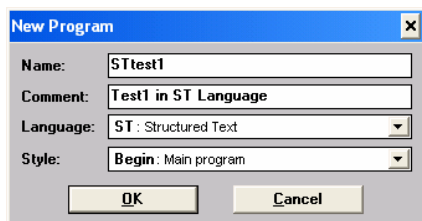
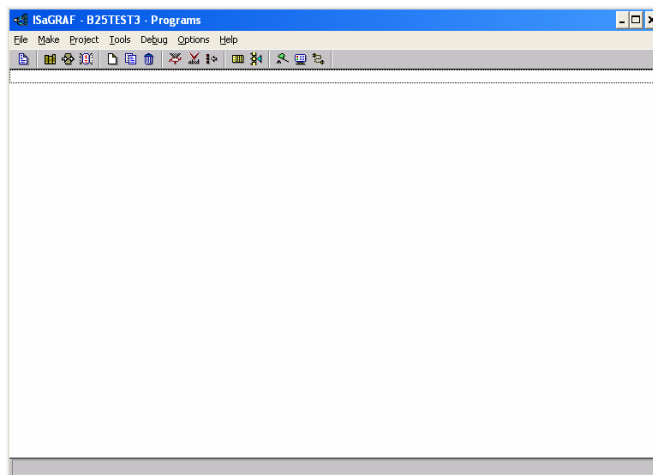
### 3.4.3 Using Structured Text

1. Open the ISAaGRAF Project Management by double-clicking on the ISAaGRAF Projects icon on your Desktop or selecting **Start** menu → **Programs** → **ISAaGRAF 3.5** → **Projects**. On the **Projects Management** window, select **File** menu → **New**.

2. On the **Create new project** window, enter the name of the project (for example b25test3) and press **OK** button. The name of project should not exceed 8 characters. The b25test3 project is then listed in the **Projects Management** window.



3. Select **Edit** menu → **Set comment text**. Enter a brief description of this project and press **OK** button. This description will be displayed next to the project name in the **Projects Management** window.
4. Double-click on **b25test3** project. An empty **B25TEST3 – Programs** window is displayed.



5. Select **File** menu → **New**. On the **New program** window enter the name of the program (for example, STtest1); a brief comment; select the Language to **ST**; select **Begin** Style and press **OK** button. The STtest1 program is displayed in the **B25TEST3 – Programs** window.

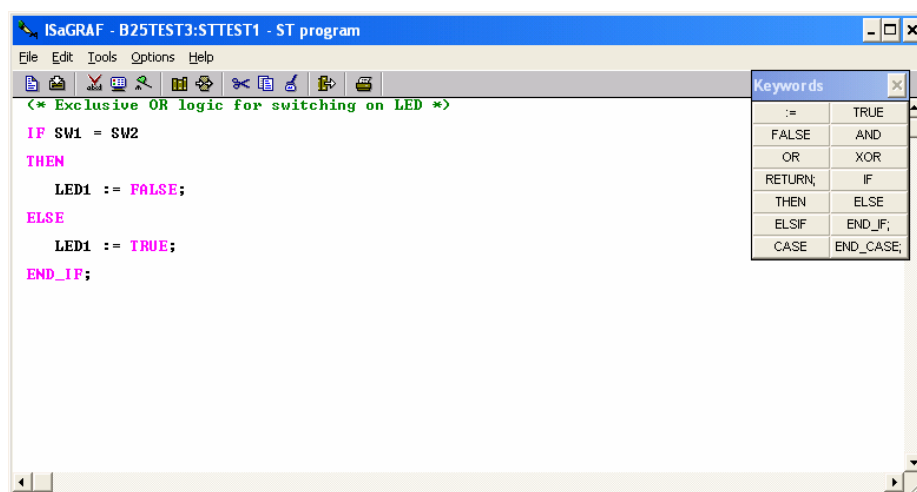
6. Follow Steps 6 to 11 in 3.4.1 to create and populate the application's Dictionary with SW1 and SW2 Boolean input variables, and LED1 Boolean output variable.
7. On the **B25TEST3 – Programs** window double-click on **STtest1** program.
8. Type in a comment in **comment parentheses** (\* \*) such as (\* Exclusive OR logic for switching on LED \*). When entered correctly comments are highlighted green.
9. Press **Enter** to move to the next command line in the **ST program** editor.
10. To enter **Keyword commands**, either click the desired button in the Keywords tool box or type it, such as for an 'if' statement, either click **IF** in the Keyword tool box or type IF on the command line. When correctly entered Keyword commands are highlighted pink.
11. To enter **inputs, outputs, or variables**, for example input switch SW1, either select Edit → Insert variable → SW1 or type SW1 on the command line.
12. Type the following command lines under the entered comment:

```

IF SW1 = SW2
THEN
    LED1 := FALSE;
ELSE
    LED1 := TRUE;
END_IF;

```

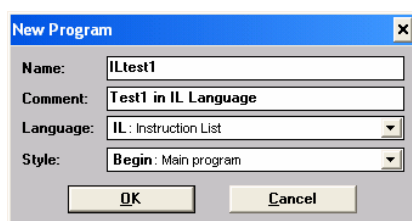
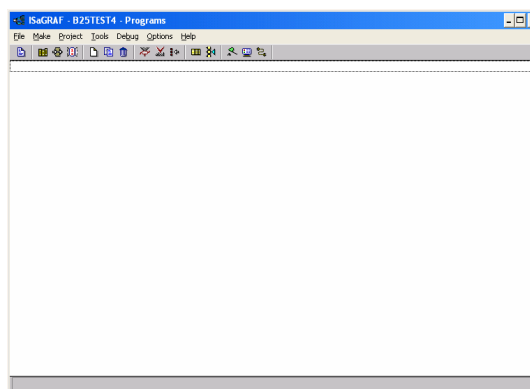
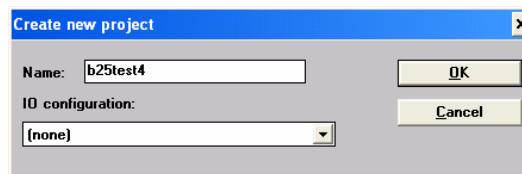
13. The **LDtest1** program should now appear as follows:



14. Save the program by selecting **File** menu → **Save**. Press **OK** button on the **Update diary** window. Close the **STtest1 – ST Program** window.
15. Follow Steps 17 to 25 in 3.4.1 to compile the application and download it to the Target PLC.
16. Double-click on **STtest1** program. The **STTEST1 – ST Programs** window is displayed. Press the SW1 (short-circuit digital input IN00) and the LED1 will be turned ON as well as the state of LED1 in the Programs window will change. The PLC program implements a Boolean XOR operation on SW1 and SW2 with the result set on the LED1.
17. To stop the monitoring of the PLC application, close the **Debugger** window. The programs and dictionary windows in debug mode will be closed.

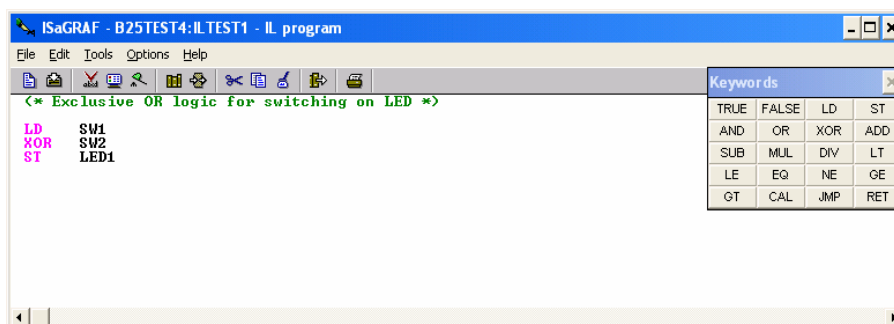
### 3.4.4 Using Instruction List

1. Open the ISaGRAF Project Management by double-clicking on the ISaGRAF Projects icon on your Desktop or selecting **Start** menu → **Programs** → **ISaGRAF 3.5** → **Projects**. On the **Projects Management** window, select **File** menu → **New**.
2. On the **Create new project** window, enter the name of the project (for example b25test4) and press **OK** button. The name of project should not exceed 8 characters. The b25test4 project is then listed in the **Projects Management** window.
3. Select **Edit** menu → **Set comment text**. Enter a brief description of this project and press **OK** button. This description will be displayed next to the project name in the **Projects Management** window.
4. Double-click on **b25test4** project. An empty **B25TEST4 – Programs** window is displayed.

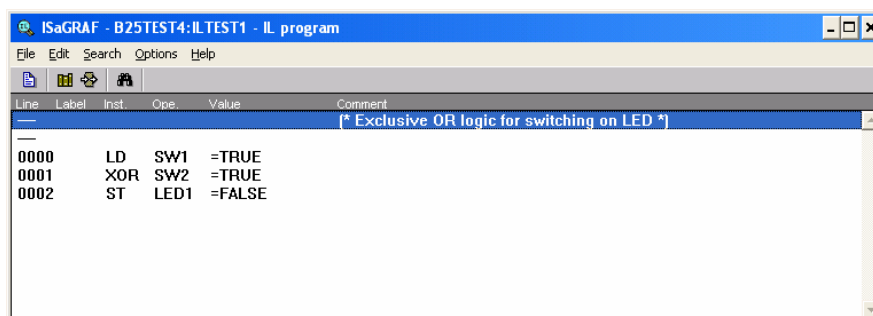


5. Select **File** menu → **New**. On the **New program** window enter the name of the program (for example, ILtest1); a brief comment; select the Language to **Quick IL**; select **Begin** Style and press **OK** button. The ILtest1 program is displayed in the **B25TEST4 – Programs** window.
6. Follow Steps 6 to 11 in 3.4.1 to create and populate the application's Dictionary with SW1 and SW2 Boolean input variables, and LED1 Boolean output variable.
7. On the **B25TEST4 – Programs** window double-click on **ILtest1** program.
8. Type in a comment in **comment parentheses** (\*\*) such as (\* Exclusive OR logic for switching on LED \*). When entered correctly comments are highlighted green.
9. Press **Enter** to move to the next command line in the **IL program** editor.
10. To enter **Keyword commands**, either click the desired button in the Keywords tool box or type it, such as for an 'AND' statement, either click **AND** in the Keyword tool box or type AND on the command line. When correctly entered Keyword commands are highlighted pink.
11. To enter **inputs, outputs, or variables**, for example input switch SW1, either select Edit → Insert variable → SW1 or type SW1 on the command line.
12. Type the following command lines under the entered comment:
 

```
LD    SW1
XOR   SW2
ST    LED1
```
13. The **ILtest1** program should now appear as follows:



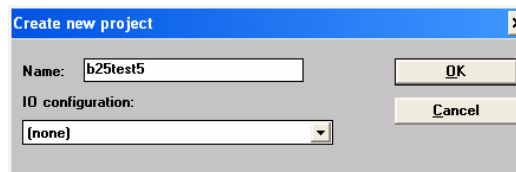
14. Save the program by selecting **File** menu → **Save**. Press **OK** button on the **Update diary** window. Close the **ILtest1 – ST Program** window.
15. Follow Steps 17 to 25 in 3.4.1 to compile the application and download it to the Target PLC.
16. Double-click on **ILtest1** program. The **ILTEST1 – ST Programs** window is displayed, with the line numbers visible and the TRUE or FALSE current state for each variable displayed in the Value column. Short circuit digital input IN00 to set SW1 to FALSE, the LED1 will be turned ON as well as the state of LED1 in the Programs window will change. The PLC program implements a Boolean XOR operation on SW1 and SW2 with the result set on the LED1.

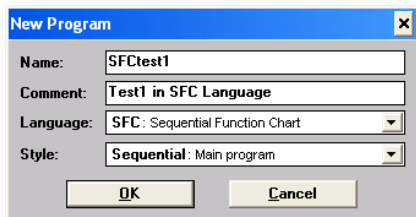
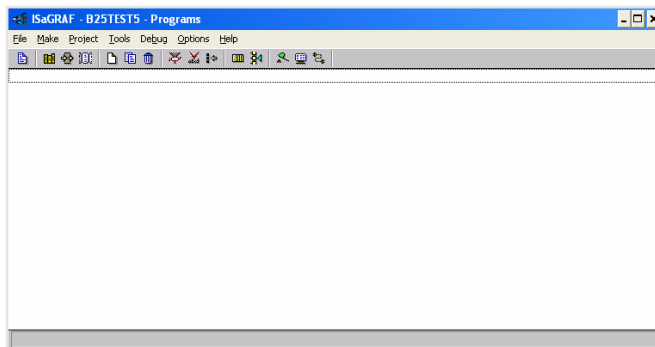


17. To stop the monitoring of the PLC application, close the **Debugger** window. The programs and dictionary windows in debug mode will be closed.

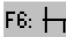
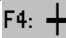

### 3.4.5 Using Sequential Function Chart

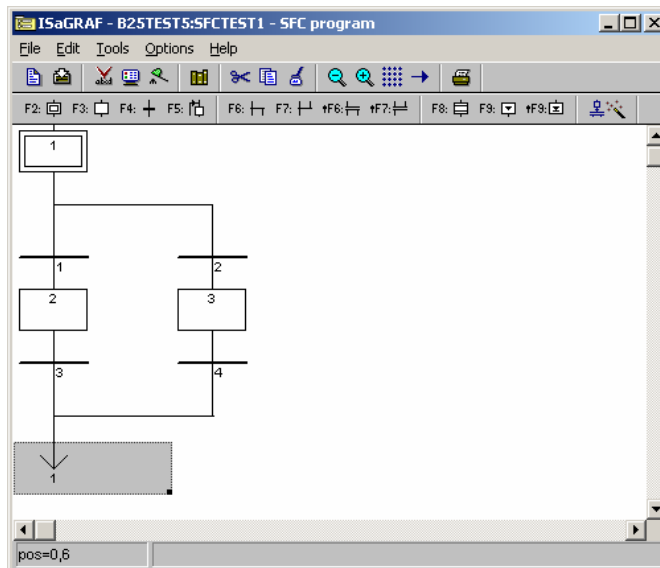
1. Open the ISaGRAF Project Management by double-clicking on the ISaGRAF Projects icon on your Desktop or selecting **Start** menu → **Programs** → **ISaGRAF 3.5** → **Projects**. On the **Projects Management** window, select **File** menu → **New**.
2. On the **Create new project** window, enter the name of the project (for example b25test5) and press **OK** button. The name of project should not exceed 8 characters. The b25test5 project is then listed in the **Projects Management** window.
3. Select **Edit** menu → **Set comment text**. Enter a brief description of this project and press **OK** button. This description will be displayed next to the project name in the **Projects Management** window.
4. Double-click on **b25test5** project. An empty **B25TEST5 – Programs** window is displayed.



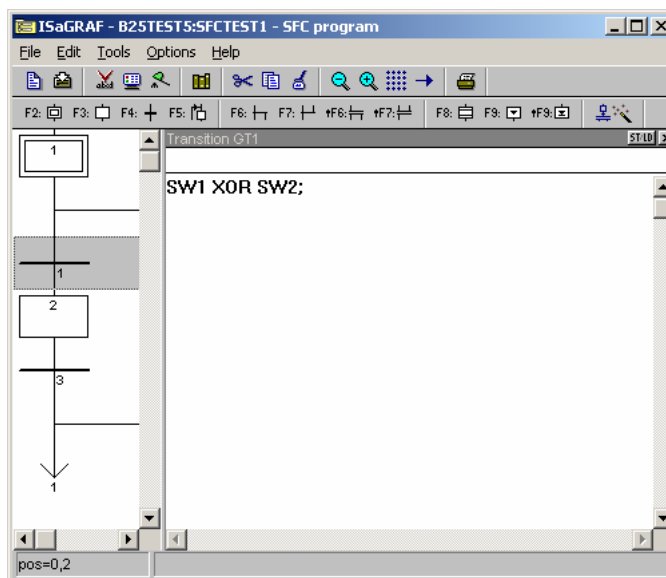


5. Select **File** menu → **New**. On the **New program** window enter the name of the program (for example, SFCTest1); a brief comment; select the Language to **SFC**; select **Begin** Style and press **OK** button. The SFCTest1 program is displayed in the **B25TEST5 – Programs** window.

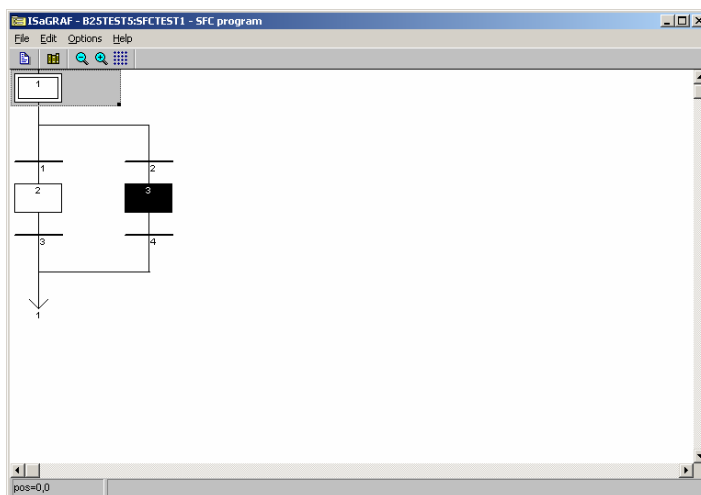
- 6. Follow Steps 6 to 11 in Section 3.4.1 to create and populate application's Dictionary with three Boolean variables (SW1, SW2 and LED1).
- 7. On the **B25TEST5 – Programs** window double-click on **SFCTest1** program.
- 8. Click on below Step 1. Click on **OR divergence**  to add a single divergence. Click on below single divergence and then on **Transition**  to add a transition after the single divergence. Click on below the transition and add Step 2 by pressing **Step**  button. Repeat the same procedure to add Transitions 3, 4 and 5, Step 3, a single divergence and a Jump to Step 1. The final program screen should be as shown below.



- 9. Double-click on Transition 1 and write the expression `sw1 XOR sw2`; on the **Transition GT1 ST/LD** editor that is displayed.



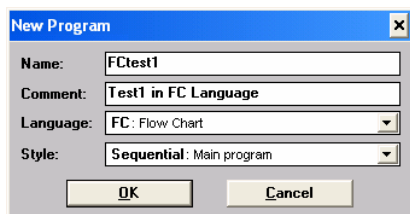
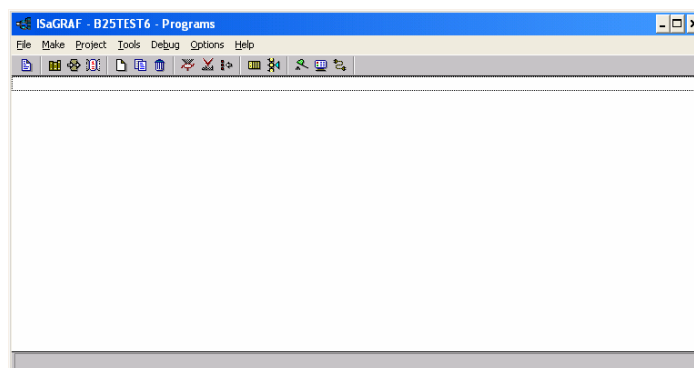
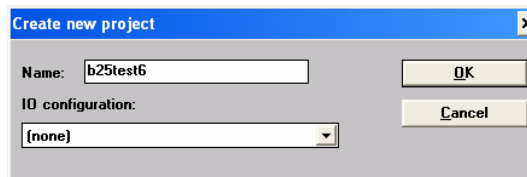
10. Double-click on Transition 2 and write the expression `not (SW1 XOR SW2)` ; on the **Transition GT2 ST/LD** editor that is displayed.
11. Double-click on Step 2 and write the action `LED1 (S)` ; on the **Step GS2** that is displayed. Add the action `LED2 (R)` ; on Step 3.
12. Save the program by selecting **File** menu → **Save**. Press **OK** button on the **Update diary** window. Close the **SFCtest1 – Program** window.
13. Follow Steps 17 to 25 in 3.4.1 to compile the application and download it to the Target PLC.
14. Double-click on **SFCtest1** program. The **SFCTEST1 – SFC Program** window is displayed. The step currently active is shown with a black box. Short circuit digital input IN00 to change the activity to Step 2 which set the LED1 (DS3 LED) output to TRUE.






15. To stop the monitoring of the PLC application, close the **Debugger** window. The programs and dictionary windows in debug mode will be closed.

### 3.4.6 Using Flow Chart

1. Open the ISaGRAF Project Management by double-clicking on the ISaGRAF Projects icon on your Desktop or selecting **Start** menu → **Programs** → **ISaGRAF 3.5** → **Projects**. On the **Projects Management** window, select **File** menu → **New**.
2. On the **Create new project** window, enter the name of the project (for example b25test6) and press **OK** button. The name of project should not exceed 8 characters. The b25test6 project is then listed in the **Projects Management** window.
3. Select **Edit** menu → **Set comment text**. Enter a brief description of this project and press **OK** button. This description will be displayed next to the project name in the **Projects Management** window.
4. Double-click on **b25test6** project. An empty **B25TEST6 – Programs** window is displayed.






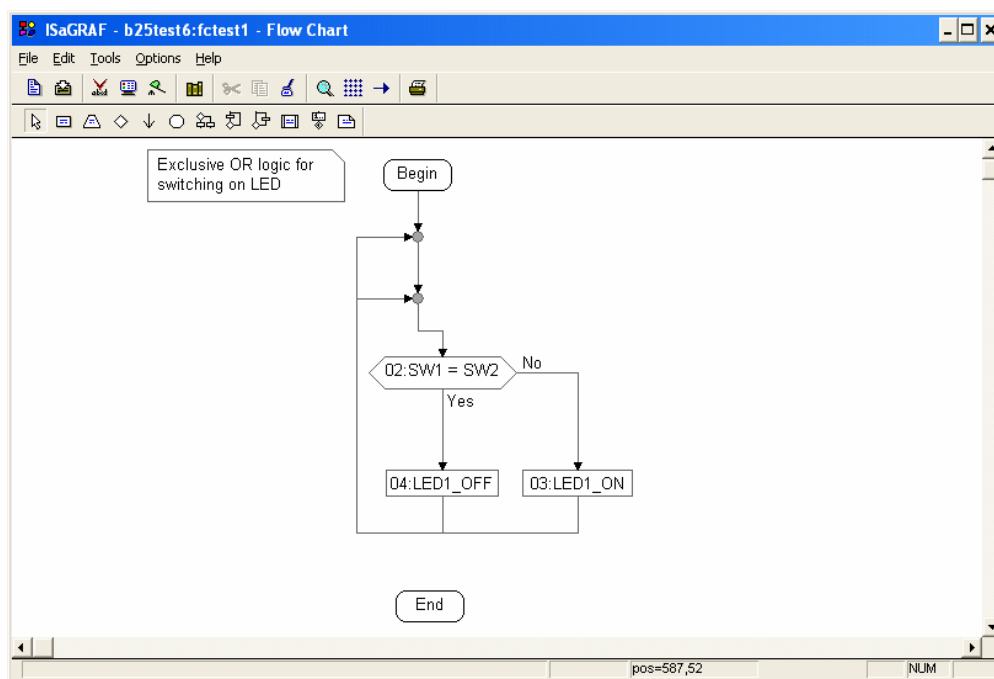
5. Select **File** menu → **New**. On the **New program** window enter the name of the program (for example, FCtest1); a brief comment; select the Language to **FC**; select **Begin** Style and press **OK** button. The FCtest1 program is displayed in the **B25TEST6 – Programs** window.
6. Follow Steps 6 to 11 in 3.4.1 to create and populate the application's Dictionary with SW1 and SW2 Boolean input variables, and LED1 Boolean output variable.
7. On the **B25TEST6 – Programs** window double-click on **FCtest1** program.
8. Select the **Insert a comment** button  and place the comment box in the **FCtest1 Flow Chart** editor. Double click on the box to type in a comment such as "Exclusive OR logic for switching on LED".
9. Select the **Insert a test** button  and place it between the "Begin" symbol and the "End" symbol. Double click on it to display the editing box for that symbol. Rename it SW1 = SW2, and type in the code SW1 = SW2.
10. Select the **Insert an action** button  and place one on each of the two flow links from the test. Double click on the action symbol placed on the "Yes" flow link to display the editing box. Rename it LED1\_OFF and type in the code:

```
LED1 := FALSE;
```

Double click on the action symbol placed on the "No" flow link to display the editing box. Rename it LED1\_ON and type in the code:

```
LED1 := TRUE;
```

11. Select the **Insert a Repeat-Until** button  and place it in between the “Begin” symbol and the “SW1 = SW2” test symbol. Press Delete to just leave the flow line connector behind .
12. Select the **flow link** between the “Begin” symbol and the “End” symbol and delete it to allow for the program to run continuously without ending.
13. Click on the flow line connector that both the “LED\_OFF” and the “LED\_ON” action symbols connect to. Select the **Insert a flow** button  and connect both the “LED\_OFF” and the “LED\_ON” action symbols to the flow line connector remaining from **Step 11**. This allows the “SW1 = SW2” test to repeat continuously, so if either of SW1 or SW2 change it can test again and change the LED1 output.
14. The **FCtest1 Flow Chart** should now appear as follows:



15. Save the program by selecting **File** menu → **Save**. Press **OK** button on the **Update diary** window. Close the **FCtest1 – Flow Chart** window.
16. Follow Steps 17 to 25 in 3.4.1 to compile and download it to the Target PLC.
17. Double-click on **FCtest1** program. The **FCTEST1 – Flow Chart** window is displayed. Short circuit the digital input IN00 (SW1 will be FALSE), the LED1 will be turned ON as well as the state of LED1 in the Programs window will change. The PLC program implements a Boolean XOR operation on SW1 and SW2 with the result set on the LED1.
18. To stop the monitoring of the PLC application, close the **Debugger** window. The programs and dictionary windows in debug mode will be closed.

The ISaGRAF User's Manual (See [2]) and the on-line help of the ISaGRAF Workbench describes in detail all the Workbench functionalities (editor, simulation, debugger, etc.) including also a reference manual of the PLC programming languages (IEC 61131-3).



## 4. HARDWARE REFERENCE

The Figure 4 shows the signal names and connectors of the BL2500.

The BL2500 are equipped with five 1 × 10 friction-lock connector terminals (J1, J3, J9, J11, and J12) where pin 9 is removed to polarize the connector terminals, a 2 × 5 RS-232 signal header, a 2 × 5 programming header, and an RJ-45 Ethernet jack on the Rabbit core module.

The RJ-45 jacks at J4 and J5 labelled RabbitNet® are serial I/O expansion ports for use with RabbitNet I/O boards.



### Caution:

The RabbitNet jacks do not support Ethernet connections. Be careful to connect your Ethernet cable to the jack labelled Ethernet.

Two 4-pin 0.156" friction-lock connector terminals at J7 and J8 are installed to supply power (DCIN and +5 V) to the RabbitNet peripheral boards. Two 2-pin 0.156" friction-lock connector terminals at J2 and J10 are for power supply and +K connections.

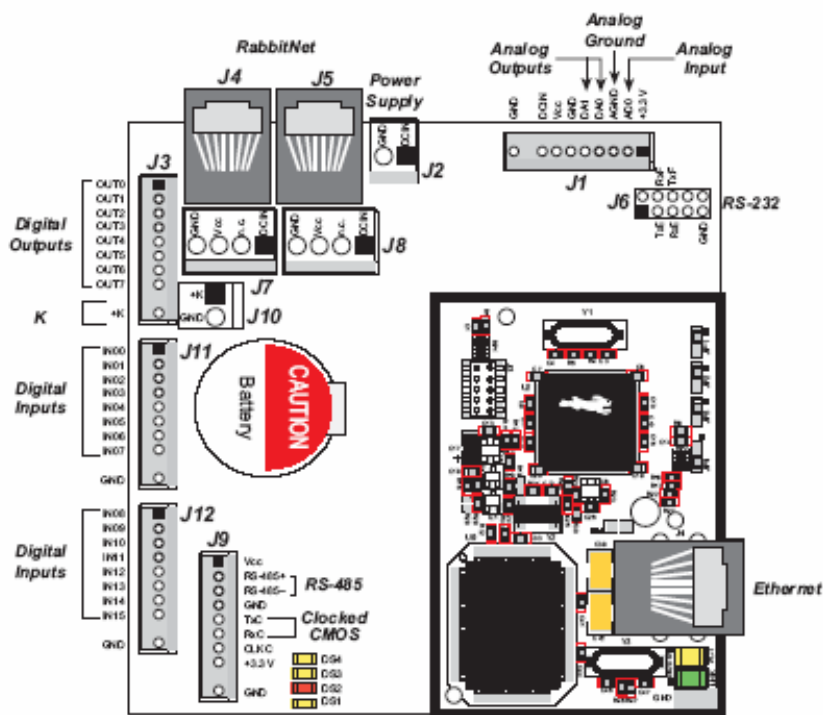


Figure 4: BL2500 Pinouts

For detail about electrical and mechanical specifications of the BL2500 go to Section 8.1.

### 4.1 DIGITAL INPUTS

The BL2500 has 16 digital inputs, IN00-IN15. IN00-IN13 and IN15 are each protected over a range of -36 V to +36 V, and IN14 is protected over a range of -36 V to +5 V. The inputs are factory-configured to be pulled up to +3.3 V; IN00-IN07 can also be pulled up to +K or they can be pulled down to 0 V by changing a surface-mounted 0 W resistor. Figure 5 shows a sample digital input circuit. IN00-IN07 and IN15 are protected against noise spikes by a low-pass filter composed of a 22 kΩ series resistor and a 10 nF capacitor.

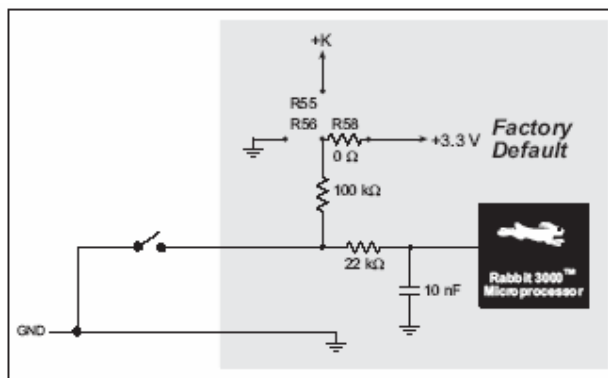


Figure 5: BL2500 Digital Inputs (Pull-up factory default)

The actual switching threshold between a zero and a one is between 0.9 V and 2.3 V for all 16 inputs, i.e.  $V_{INLMax} = 0.9\text{ V}$  and  $V_{INHMin} = 2.3\text{ V}$ .

IN00-IN13 and IN15 are each fully protected over a range of -36 V to +36 V, and can handle short spikes of  $\pm 40\text{ V}$ . IN14 is protected over a range of -36 V to +5 V.

## 4.2 DIGITAL OUTPUTS

The BL2500 has eight digital outputs, OUT0-OUT7, each of which can sink up to 200 mA. Figure 6 shows a wiring diagram for using the digital outputs in a sinking configuration.

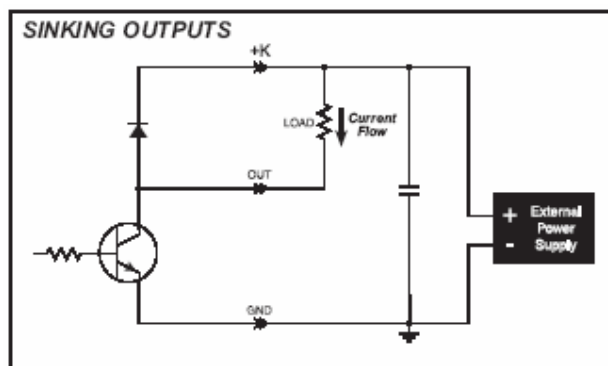


Figure 6: BL2500 Digital Outputs

+K is an externally supplied voltage of 3.3 - 40 V DC, and should be capable of delivering all the load currents. Although a connection to a +K supply is not absolutely required with sinking outputs, it is highly recommended to protect against current spikes when driving inductive loads such as relays and solenoids.

Connect the positive +K supply to pin 1 of friction-lock connector terminal J10 and the negative side of the supply to pin 2 of friction-lock connector terminal J10. A friction-lock connector is recommended to connect this supply because the +K inputs are not protected against reverse polarity, and serious damage to the BL2500 may result if you connect this supply backwards.

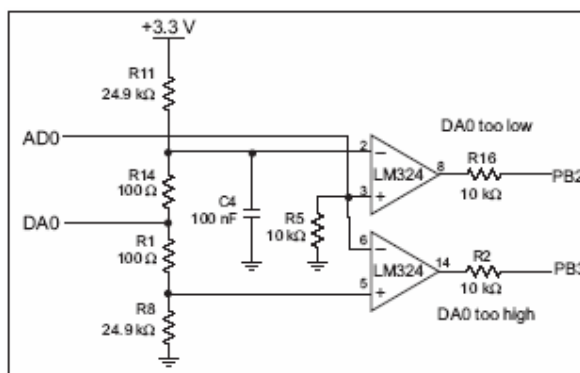
## 4.3 ANALOG INPUT

The A/D converter, shown in Figure 7, compares the DA0 voltage to AD0, the voltage presented to the A/D converter. DA0 therefore cannot be used for the D/A converter when the A/D converter is being used.



**Note:**

Only DA1 is available for EMBEDDED PLC as DA0 is used by the A/D converter.



**Figure 7: Schematic Diagram of the A/D Converter**

The A/D converter programs DA0 using a successive-approximation binary search until DA0 equals the A/D converter input voltage. That programmed DA0 voltage is then reported as the A/D converter value.

The A/D converter transforms the voltage at DA0 into a 13.2 mV window around DA0. Because the A/D converter circuit uses a 13.2 mV window, the accuracy is  $\pm 6.6$  mV. DA0 can range from 0.1 V to 3.1 V, which represents 227 steps of 13.2 mV. This represents a resolution of approximately 8 bits. Since the D/A converter is able to change the DA0 output in 3.22 mV steps, there are 930 steps over the range from 0.1 V to 3.1 V. This represents a resolution of approximately 10 bits.

The A/D converter has no reference voltage. There is a relative accuracy between measurements, but no absolute accuracy without calibration. This is because the +3.3 V supply can vary  $\pm 5\%$ , the pulse-width modulated outputs might not reach the full 0 V and 3.3 V rails out of the Rabbit 3000 microprocessor, and the gain resistors used in the circuit have a 1% tolerance. For these reasons, each BL2500 needs to be calibrated individually, with the constants held in software, to be able to rely on an absolute accuracy. The BL2500 has this calibration support.

An A/D conversion takes approximately 83 ms.

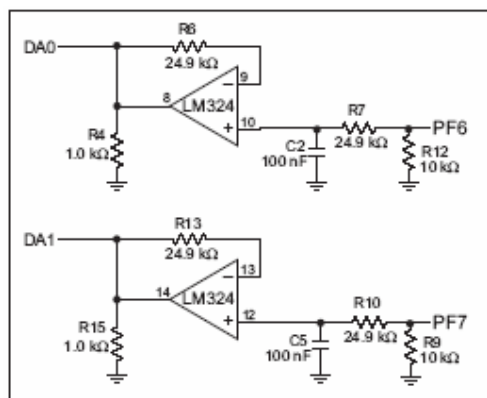
#### 4.4 ANALOG OUTPUT

Two D/A converter outputs, DA0 and DA1, are supplied on the BL2500. These are shown in Figure 8.



**Note:**

Only DA1 is available for EMBEDDED PLC BL2500 as DA0 is used by the A/D converter.



**Figure 8: Schematic Diagram of D/A Converters**

The D/A converters have no reference voltage. Although they may be fairly accurate from one programmed voltage to the next, they do not have absolute accuracy. This is because the +3.3 V supply can change  $\pm 5\%$ , the PWM outputs might not achieve the full 0 V and 3.3 V rail out of the processor, and

the gain resistors in the circuit have a 1% tolerance. The D/A converters therefore need individual calibration, with the calibration constants held in software before absolute accuracy can be relied on. The BL2500 has such calibration.

Pulse-width modulation (PWM) is used for the D/A conversion. The digital signal, which is either 0 V or 3.3 V, will be a train of pulses. This means that if the signal is taken to be usually at 0 V (or ground), the pulses will be some 3.3 V pulses of varying width. The voltage will be 0 V for a given time, then jump to 3.3 V for a given time, then back to ground for a given time, then back to 3.3 V, and so on. A hardware filter that consists of a resistor and capacitor averages the 3.3 V signal and the 0 V signal over time. Therefore, if the time that the signal is at 3.3 V is equal to the time the signal is 0 V, the duty cycle will be 50%, and the average signal will be 1.65 V. If the time at 3.3 V is only 25% of the time, then the average voltage will be 0.825 V. Thus, the software needs to only vary the time the signal is at 3.3 V with respect to the time the signal is at 0 V to achieve any desired voltage between 0 and 3.3 V. It is very easy to do pulse-width modulation with the Rabbit 3000 microprocessor because the chip's architecture includes an advanced PWM feature.

## 4.5 COMMUNICATION INTERFACES

### 4.5.1 Serial Ports

The BL2500 can be configured (using EMBEDDED PLC Utility) to use either one RS-232 (serial port E) or the RS485 (serial port D). The serial port chosen will be used as the communication channel with either the ISaGRAF Workbench or a Modbus master. The serial port A is used by the programming cable.

**Table 2: EMBEDDED PLC BL2500 Serial Port Configuration**

Serial Port	Use	Header
A	Programming Port	J3 (Rabbit core module)
D	RS-485 (3-wires)	J9
E	RS-232 (3-wires)	J6

#### 4.5.1.1 RS-232

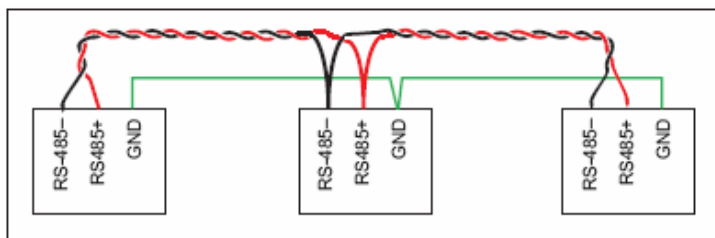
The BL2500 RS-232 serial communication is supported by an RS-232 transceiver. This transceiver provides the voltage output, slew rate, and input voltage immunity required to meet the RS-232 serial communication protocol. Basically, the chip translates the Rabbit 3000's CMOS/TTL signals to RS-232 signal levels. Note that the polarity is reversed in an RS-232 circuit so that a +3.3 V output becomes approximately -6 V and 0 V is output as +6 V. The RS-232 transceiver also provides the proper line loading for reliable communication.

RS-232 can be used effectively for distances of up to 15 m.

#### 4.5.1.2 RS-485

The BL2500 has one RS-485 serial channel, which is connected to the Rabbit 3000 Serial Port D through an RS-485 transceiver. The half-duplex communication uses PA4 to control the transmit enable on the communication line. Using this scheme a strict master/slave relationship must exist between devices to insure that no two devices attempt to drive the bus simultaneously.

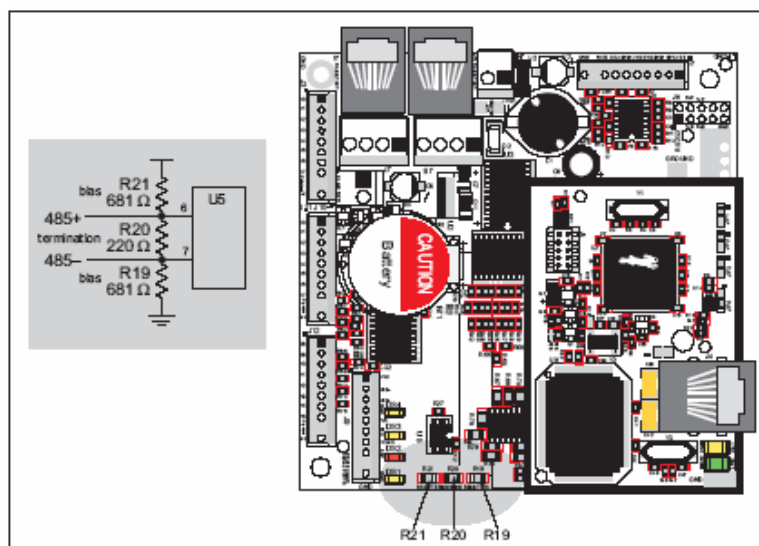
The BL2500 can be used in an RS-485 multidrop network spanning up to 1200 m (4000 ft), and there can be as many as 32 attached devices. Connect the 485+ to 485+ and 485- to 485- using single twisted-pair wires as shown in Figure 9. Note that a common ground is recommended.



**Figure 9: BL2500 Multidrop Network**

The BL2500 comes with a 220 W termination resistor and two 681 W bias resistors installed and enabled.

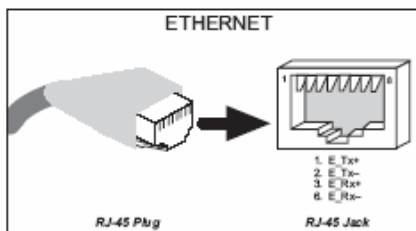
The load these bias and termination resistors present to the RS-485 transceiver limits the number of BL2500s in a multidrop network to one master and nine slaves, unless the bias and termination resistors are removed. When using more than 10 BL2500s in a multidrop network, or when you need the full common-mode immunity per the RS-485 specification, leave the 681 W bias resistors in place on the master BL2500, and leave the 220 W termination resistors in place on the BL2500 at each end of the network.



**Figure 10: RS485 Termination and Bias Resistors**

### 4.5.2 Ethernet Port

Figure 11 shows the pinout for the RJ-45 Ethernet port (J4). Note that some Ethernet connectors are numbered in reverse to the order used here.



**Figure 11: RJ-45 Ethernet Port Pinout**

Three LEDs are placed next to the RJ-45 Ethernet jack, one to indicate an Ethernet link (LNK), one to indicate Ethernet activity (ACT), and one to indicate when the RCM3200 is connected to a functioning 100Base-T network (SPD).

The RJ-45 connector is shielded to minimize EMI effects to/from the Ethernet signals.

## 4.6 LED INDICATORS

The EMBEDDED PLC Kernel running on the BL2500 uses three LEDs to indicate status:

- **DS1 (yellow)**. When this LED is flashing every second, it indicates that the Target PLC is licensed and active.
- **DS2 (red)**. This LED is turned ON after reset the Target PLC. If the Target PLC is not licensed the LED will remain ON indefinitely. If the Target PLC is licensed the LED will be turned OFF after 8 seconds. Also, this LED is turned ON during configuration of the Target PLC.

DS3 and DS4 (yellow) LEDs are used via ISaGRAF Workbench I/O boards.

## 5. SOFTWARE REFERENCE

### 5.1 MORE ABOUT ISAGRAF

#### 5.1.1 Project Manager

The ISaGRAF methodology begins with the preparation of a detailed project specification. This step is common to all PLC programming techniques and is usually the result of a thorough analysis of the project and consultation between the integrator and the user.

Distributed applications can be represented as several ISaGRAF projects grouped together in the project list. Distributed applications can be edited, simulated or debugged on the same Windows screen.

#### 5.1.2 Program Manager

With the program manager the application specification is divided into smaller functional modules. The exact operation that is to be performed within each module is defined at that stage.

ISaGRAF's program management facilities allow the user to define each of these modules, their operations and their interaction to form the complete application.

#### 5.1.3 Variable Definition

All variables are declared or imported in the ISaGRAF dictionary. When this step is achieved, during programming, a mouse click will insert the variable in the program.

Any external database can be imported to build the ISaGRAF dictionary. A quick declaration allows many variables to be declared with one command and an easy to use mapping tool is provided for Modbus-based SCADA systems such as Indusoft®. For a brief description about Indusoft and how to use it in conjunction with EMBEDDED PLC see Chapter 9.

The EMBEDDED PLC Firmware Kernel implements three types of Modbus communication: Modbus over TCP/IP, Modbus RTU over RS232 and Modbus RTU over RS485. The EMBEDDED PLC Kernel can run only one protocol at one time.

**Note:**

EMBEDDED PLC has the TCP/IP port 502 reserved (this port can not be modified) to support Modbus over TCP/IP communications. Since ISaGRAF Workbench uses a different TCP/IP port for communication with the Target PLC (port 1100), the Workbench and a Modbus master (HMI or SCADA) can communicate with the Target at the same time, i.e. when the Target is configured as Modbus over TCP/IP the ISaGRAF Workbench and a Modbus master can share the same physical line (Ethernet). However, when the Target is using either RS232 or RS485 only an ISaGRAF Workbench or a Modbus master can be connected to the target at any one time.

#### 5.1.4 Functional Module Programming

The next step in the ISaGRAF methodology is the actual programming of the various functional modules. This can be done using any one of the six supported languages:

- Sequential Functional Chart (SFC)
- Function Block Diagram (FBD)
- Ladder Diagram (LD)
- Structured Text (ST)
- Instruction List (IL)
- Flow Chart (FC)

## 5.1.5 IEC 61131-3 Language Editors

In February 1993, responding to the need for standards to reduce training costs and guaranteed portability, the IEC issued the IEC 61131-3 standard: a specification of five PLC programming languages that can be freely mixed to define automation and control procedures.

In August 1996, ISaGRAF version 3.2 received the certificate of PLC open compliance class of IEC 61131-3 (base level IL).

### 5.1.5.1 Sequential Function Chart Editor

SFC divides the process cycle into a number of well defined steps, separated by transitions. SFC is the core language of the IEC 61131-3 standard. The other languages are used to describe the actions performed within the steps and the logical conditions for the transitions. Parallel processing can easily be described using SFC.

### 5.1.5.2 Function Block Diagram Editor

The FBD is a graphical language that allows the user to build complex procedures by taking existing function blocks from the ISaGRAF library and wiring them together on the screen.

ISaGRAF includes a library with more than 60 blocks ready to use. Users can enlarge this library by writing functions and function blocks in LD/FBD/ST/IL or C.

### 5.1.5.3 Ladder Diagram Editor

The ladder diagram is one of the most familiar methods of representing logical equations and simple actions. The ISaGRAF ladder diagram editor offers the best compromises between high level graphic capabilities and easy to use keyboard driven programming.

### 5.1.5.4 Structured Text Editor

Structured text is a high level structured language with a syntax similar to Pascal, but more intuitive to the automation engineer.

This language is mainly used to implement complex procedure that cannot be easily expressed with graphical languages (IF/THEN/ELSE, FOR, WHILE, etc.).

### 5.1.5.5 Instruction List Editor

Instruction list is a low level language similar to the simple textual PLC languages.

## 5.1.6 Flow Chart Editor

In addition to the five IEC 61131-3 languages ISaGRAF implements another graphical language, Flow Chart. Flow Chart is a decision diagram, which can also be used to describe sequential operations.

## 5.1.7 Document Generator

ISaGRAF features a self-documentation capability that can automatically generate the project's most current project description, project architecture, history of modifications, I/O wiring lists, dictionaries and cross references.

## 5.1.8 Simulation

Without any target hardware platform, the programmer can validate the complete application in the office. With ISaGRAF's powerful simulator on the workbench, the user can perform structural and functional tests of each module separately or on the global application.

The simulator makes it easy to trace the program execution and to see the status of any internal variable. The I/O hardware can be fully simulated and internal status and variables manual forced by the user.



During simulation, editors can be opened in debug mode to see how programs are executed.

**Note:**

Not all C functions and C function blocks are available for simulation. Section 5.2.2 and 5.2.3 describes C functions and C function blocks that are specific to the BL2500 and are not available for simulation.

## 5.2 ISAGRAF SOFTWARE REFERENCE

This section presents information about the specific elements of the ISaGRAF Workbench Library for the EMBEDDED PLC BL2500 (I/O boards, C functions and C function blocks).

### 5.2.1 I/O Boards

ISaGRAF I/O board library for the BL2500 is included as part of the BL2500 BSP to make it easy to communicate with the BL2500 supported inputs and outputs. These I/O boards are described in the following sub-sections.

#### 5.2.1.1 BL2500 Digital Inputs Board

**Name:**

bl25di

**Description:**

Monitors IN00 - IN15 of the BL2500 Digital Inputs

**Parameters:**

None

**Number of Channels:**

16

**Connection Terminals:**

IN00 to IN15 – Connection for positive signal channel 1 to 16

GND – Connection for negative signal all channels

**Channel Value Correspondence:**

TRUE – When digital input pulled up to greater than 2.3 V ( $V_{INHMin}$ )

FALSE – When digital input pulled down to less than 0.9 V ( $V_{INLMax}$ )

### 5.2.1.2 BL2500 Digital Outputs Board

**Name:**

bl25do

**Description:**

Controls OUT0 - OUT7 of the BL2500 digital sinking outputs

**Number of Channels:**

8

**Connection Terminals:**

OUT0 to OUT7 – Connection of channels 1 to 8

**Channel Value Correspondence:**

TRUE – Digital output is short-circuit to 0 V

FALSE – Digital output is open circuit

### 5.2.1.3 BL2500 On-board LEDs

**Name:**

bl25led

**Description:**

Controls the BL2500 on-board LEDs DS3 and DS4

**Number of Channels:**

2

**Connection Terminals:**

None

**Channel Value Correspondence:**

TRUE – LED is ON

FALSE – LED is OFF

### 5.2.1.4 BL2500 Analog Input Board

**Name:**

bl25ai

**Description:**

Monitors AD0 Analog Input of the BL2500 (10-bit resolution over 0-3.3V range)

**Number of Channels:**

1

**Connection Terminals:**

AD0 – Connection for positive signal channel 1

AGND – Connection for negative signal channel 1

**Channel Value Correspondence:**

Analog REAL type variable: Voltage input in the range 0 – 3.3 V.



If Sel = 2, Q output format is the day of the week

**Description:**

Gives the time, date and the day of the week depending on the value of argument sel.

**(\* ST Equivalence \*)**

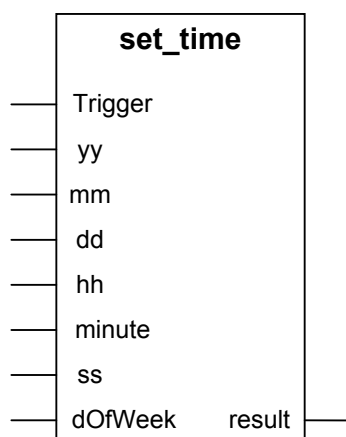
```
result := rd_time(sel);
```

**Remarks:**

Not available for simulation.

## 5.2.3 ISaGRAF C Function Blocks

### 5.2.3.1 SET\_TIME

**Arguments:**

<b>Trigger</b>	BOO	if Rising edge, sets the time and date of the BL2500
<b>yy</b>	INT	Year (1900 - 2050)
<b>mm</b>	INT	Month (1 - 12)
<b>dd</b>	INT	Day of month (1 -31)
<b>hh</b>	INT	Hour (0 - 23)
<b>minute</b>	INT	Minute (0 - 59)
<b>ss</b>	INT	Second (0 - 59)
<b>DOFWEEK</b>	INT	Day of the week (0 - 6, 0 means Sunday)
<b>result</b>	BOO	1 if operation was successful; 0 otherwise

**Description:**

Set the time and date of the BL2500 Real Time Clock.

**(\* ST Equivalence \*)**

```
result := set_time(trigg, yy, mm, dd, hh, minute, ss, dOfWeek);
```

**Remarks:**

Not available for simulation.



## 6. LOADING OR UPGRADING THE FIRMWARE KERNEL

### 6.1 INTRODUCTION

The EMBEDDED PLC Utility is used to load the EMBEDDED PLC Firmware Kernel to the Rabbit-based Target such as the SBC BL2500. The Firmware Kernel, once loaded into the Target, requires a license key to run. The EMBEDDED PLC Utility does not check for an existing license key before loading the Kernel. Thus, a new license key is required after a Kernel is loaded to a Target.

Upgrading the EMBEDDED PLC Firmware Kernel means also loading the newer version of the Firmware kernel file into the Target. Therefore after loading a newer version of the Firmware Kernel file into a licensed Target PLC, a new license key will also be required.



#### Caution:

Loading of the Firmware Kernel file is **NOT** needed if you purchased the EMBEDDED PLC Application Kit as the BL2500 comes with a pre-loaded and licensed Firmware Kernel. If you re-load the Firmware Kernel to a pre-loaded Target, the license information will be lost and a new license key will be required.

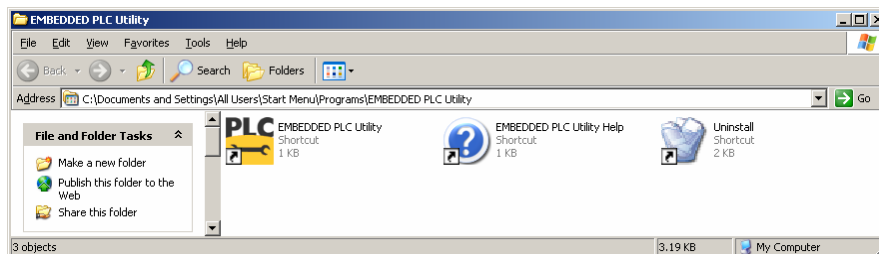
To verify if your BL2500 have the EMBEDDED PLC Kernel running, power up the BL2500 and if after 10 seconds the DS2 red LED turns off and DS1 starts flashing then the Kernel is loaded and licensed.

This chapter describes how to install the EMBEDDED PLC Utility, load and license the EMBEDDED PLC Firmware Kernel. Also includes a complete reference of the Utility software.

#### 6.1.1 Installing EMBEDDED PLC Utility

Use the following procedure to install EMBEDDED PLC Utility from the CD-ROM:

1. Insert the EMBEDDED PLC BL2500 CD-ROM and open the root folder.
2. Double-click on the **EmbeddedPLCUtility\_v1.03\_3-0237G.msi** file to launch the EMBEDDED PLC Utility Setup Wizard. Follow the on screen instructions to proceed with the installation.
3. Once all the EMBEDDED PLC Utility files have been copied, the EMBEDDED PLC Utility icon is added to your Desktop and the following group is added to your main Programs group:



#### 6.1.2 Connecting to the BL2500

1. Connect the 10-pin **PROG** connector of the programming cable to header J3 on the BL2500's RabbitCore module. Ensure that the coloured edge lines up with pin 1 as shown in Figure 12. There is a small dot on the circuit board next to pin 1 of header J3. (Do not use the **DIAG** connector, which is used for licensing and configuring only). Connect the other end of the programming cable to a COM port on your PC. Make a note of the port to which you connect the cable, as the EMBEDDED PLC Utility will need to have this parameter configured. Note that COM1 on the PC is the default COM port used by the EMBEDDED PLC Utility.

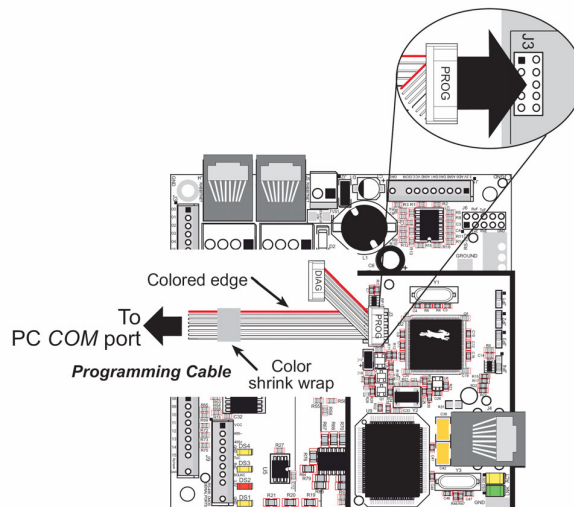


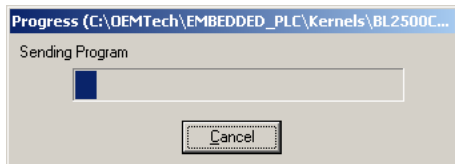
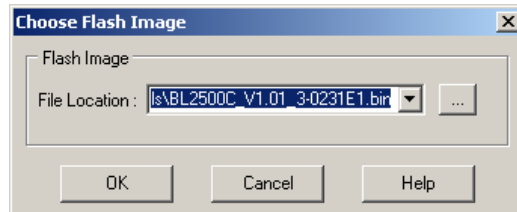
Figure 12: Programming Cable Connection

2. Connect the power supply to the BL2500 following the instructions in Section 2.4.1.

### 6.1.3 Loading and licensing the Firmware Kernel

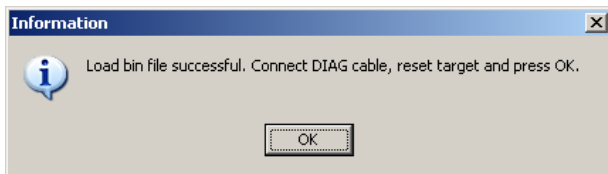
The EMBEDDED PLC BL2500 Firmware Kernel file (**BL2500C\_v1.04\_3-0231H.bin**) is located in the **BL2500C\_BSP\_v1.04\_9-0003-006\Kernels** directory of the CD-ROM (or in the ZIP file, if downloaded from the website). It is recommended to copy this file from the CD-ROM to a local PC folder, referred in this procedure as **<EMBEDDED PLC Kernel Dir>**. Use the following procedure to load the EMBEDDED PLC Firmware Kernel to the Target:

1. Open the EMBEDDED PLC Utility and select **Setup** → **Communications...** from the main menu bar. Select the serial COM port where the programming cable is connected. Check the **Use USB to Serial converter** check-box if you have the RS232-to-USB converter cable. Press **OK**.
2. Select **File** → **Load Flash Image...** from the main menu bar. On **Choose Flash Image** window press ... button. On the **Open** window select the EMBEDDED PLC Firmware Kernel file **<EMBEDDED PLC Kernel Dir>\BL2500C\_v1.04\_3-0231H.bin** and press **Open**. Press **OK** on the **Choose Flash Image** window.

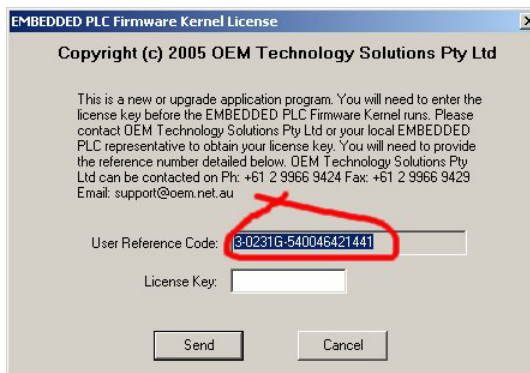


3. A **Progress** window is displayed with the status of the loading process. The process consists of four stages: Sending Coldloader → Sending Pilot BIOS → Erasing Flash → Sending Program.

4. After loading is completed a message dialog box is displayed. Follow the instructions in the same order: Connect **DIAG** cable → Reset Target → Press **OK**. There are two ways to reset the BL2500: unplugging the power supply and then plugging it again (also known as a **power cycle**); and the other is shorting out the reset pads on the back of the BL2500 board. For more information about the location of the hardware reset see Section 2.2.1 in [1].



- On the **Kernel License** window, write down the User Reference Code (you can select the code in the User Reference Code and copy it to the clipboard using **Ctrl-C**). Contact OEM Technology Solutions or your local distributor to obtain a valid license key. Remember to quote the User Reference Code. Press **Cancel**. An error message dialog is displayed, press **OK** and close the EMBEDDED PLC Utility.



 **Note:**

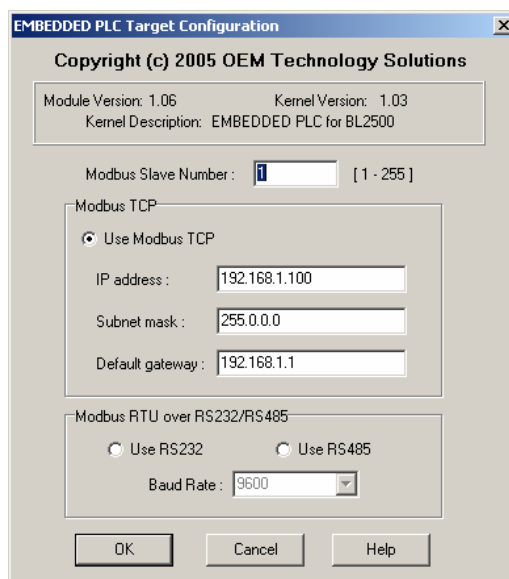
Even if your Target is not active (without valid license key) you can run several samples in the ISaGRAF Workbench in simulation mode. To run those sample files go to Section 0.

- Once you have a valid license key, open the EMBEDDED PLC Utility. Select **Setup → Kernel License...** Follow the instructions on the message dialog box in the same order: Press **OK** → Reset Target. After a few seconds the License Window will be displayed and the DS2 led (red) will be turned on.
- Enter the valid license key in the **License Key** entry box and press **Send**. A confirmation message is displayed. Save the User Reference Code and License Key for future reference and technical support. Press **OK**. The DS2 led (red) will be turned off and DS1 led (yellow) will start flashing every second as an indication that the Kernel is licensed and active. For more information about the BL2500 LED status see Section 4.6.

### 6.1.4 Configuring the Firmware Kernel

If you purchased an EMBEDDED PLC Application Kit, the BL2500 comes pre-configured for **Use Modbus TCP** and the following TCP/IP values: IP address = 192.168.1.100, Netmask = 255.0.0.0, Default gateway = 192.168.1.1. If you want to check or change the Target PLC configuration, follow these instructions:

- Open the EMBEDDED PLC Utility and select **Setup → Target Configuration...** Follow the instructions on the message dialog box in the same order: Press **OK** → Reset Target. After a few seconds the **Target Configuration** Window is displayed.



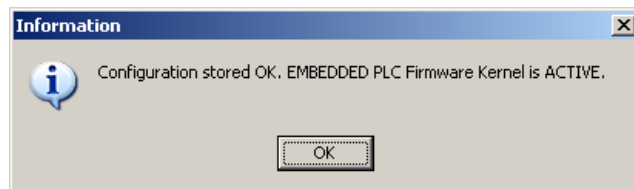


2. Enter the desired Modbus Slave Number (Default is 1). Select **Use Modbus TCP** radio button and fill the Modbus TCP configuration parameters if you want to use Modbus TCP as communication protocol. Otherwise select **Use RS232** or **Use RS485** radio buttons. Once all the configuration parameters have been entered press **OK**. The communication protocol and slave number are used to communicate the Target PLC with the ISaGRAF Workbench and Modbus master.

 **Note:**

The Modbus Slave Number parameter corresponds to the Target Slave Number on ISaGRAF Workbench (Default is 1). In order to communicate the ISaGRAF Workbench with a specific Target PLC, both numbers must be the same. This is also valid for communication between the Target PLC and a Modbus master using Modbus protocol.

3. After pressing **OK** the following message dialog box is shown. Press **OK** and your EMBEDDED PLC Firmware Kernel will be active and ready to be used with the ISaGRAF Workbench (The DS2 red LED is turned OFF and the DS1-yellow LED starts flashing every second).



## 6.2 EMBEDDED PLC UTILITY SOFTWARE REFERENCE

To use the EMBEDDED PLC Utility you must have an EMBEDDED PLC Firmware Kernel (.bin file) to load to your Rabbit-based controller. Click on **File** → **Load Flash Image**; enter the .bin file's location in the dialog box and click **OK**.

This Utility works only with serial connection and it requires the programming cable for the Rabbit-based controller (1.27mm programming cable for Rabbit 3000 microprocessor based controllers).

This Utility downloads ONLY EMBEDDED PLC Firmware Kernels. If you want to download another binary file generated with Dynamic C use the Rabbit Field Utility (RFU) that comes in the Dynamic C installation.

### 6.2.1 Menu Commands

#### 6.2.1.1 File → Load Flash Image

Allows a EMBEDDED PLC Kernel (.bin file) to be chosen as the file to be loaded. Clicking the ellipses button (...) brings up an Open File dialog box to browse for a file's location.

#### 6.2.1.2 Setup → Communications

This version of the EMBEDDED PLC Utility only supports Serial Connection.

The default com port is COM1.

The default baud rate is 115200 bps.

If the host PC is using a different com port, change the default to match the port being used by the PC. If the BIOS is using a different baud rate, change the default to match the baud rate being used by the BIOS.

#### 6.2.1.3 Setup → File Locations

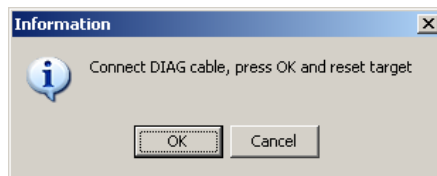
The first time EMBEDDED PLC Utility runs, it assumes that `coldload.bin`, `pilot.bin` and `flash.ini` are located in the EMBEDDED PLC Utility subdirectory. Those files are installed by the EMBEDDED PLC installation process.

The Rabbit Field Utility can be run from a different location if the location of `coldload.bin` and `pilot.bin` are specified using **Setup** → **File Locations**.

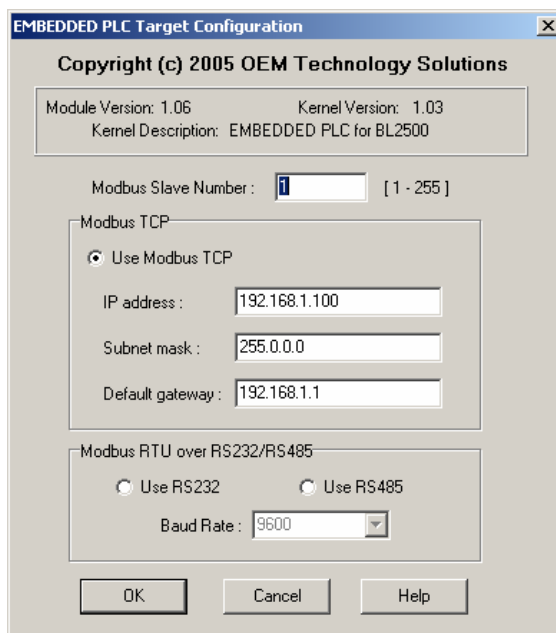
### 6.2.1.4 Setup → Target Configuration

The configuration parameters can be changed at any time once the EMBEDDED PLC kernel is running but requires the Target to be reset (or powered cycle).

Select **Setup** → **Target Configuration...** Follow the instructions that appear in the message dialog box and press **OK**.



The EMBEDDED PLC Utility will establish connection with the target to get the configuration parameters. If connection is established the following window will appear.



Enter the desired configuration and press **OK**.

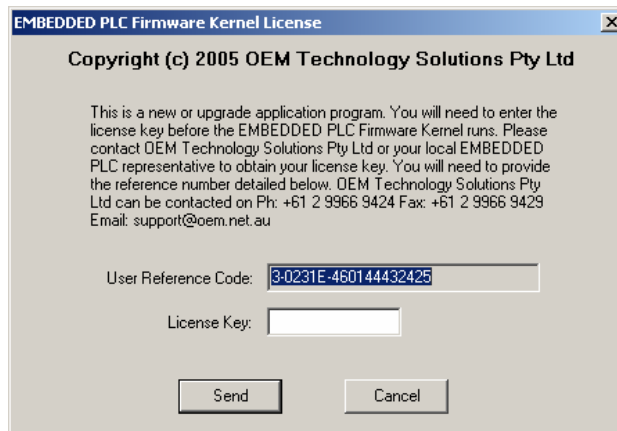
Configuration parameters:

- **Modbus Slave Number:** This is slave number used to communicate with the ISaGRAF Workbench and a Modbus Master.
- **IP Address:** IP address of the target (must be static, DHCP is not supported).
- **Netmask:** Netmasks are used to identify which part of the address is the Network ID and which part is the Host ID. For example: 255.255.255.0.
- **Default Gateway:** IP address of the default gateway.
- **Use Modbus TCP:** If this option is selected, the Modbus RTU over RS232/RS485 box is disabled. Select this option if Modbus TCP is required.
- **Use RS232:** If this option is selected, the Modbus TCP configuration box is disabled. Select this option if Modbus RTU over RS232 is required.
- **Use RS485:** If this option is selected, the Modbus TCP configuration box is disabled. Select this option if Modbus RTU over RS485 is required.
- **Baud Rate:** Select between 600 to 19200 bits per second.

This operation can be repeated at any time but does require resetting (or power cycle) the Target.

### 6.2.1.5 Setup → Kernel License

This option can be used to establish connection with the target to check the current license status. If license is required the following window will appear.



The User Reference Code can be copied into the Clipboard by double-clicking on the box (this will select the whole text) and pressing **Ctrl-C**. The text can be pasted in any document.

Enter the valid license key in the entry box and press **Send**. If license is valid a message confirming the validation will appear and the EMBEDDED PLC will be active.

If license is already valid, a message dialog box will show the current Reference Code and License Key. Keep this numbers for your records and for customer support.

### 6.2.1.6 Setup → Utility Settings

The **Target Communication Timeout** corresponds to the maximum amount of time waiting for a message coming from the EMBEDDED PLC target during licensing or configuring the kernel. The value is expressed in seconds and has to be an integer. Minimum value is 1 seconds.

## 6.2.2 Loading Shortcuts

### 6.2.2.1 Right Mouse Click

Clicking the right mouse button anywhere on the main window will bring up a list of the most recently loaded programs. Selecting any of the programs in the list will automatically load that program to the attached controller.

### 6.2.2.2 Drag and Drop

Once the EMBEDDED PLC Utility is open, if a file is dragged from Windows Explorer, the Desktop, etc, and dropped into the main window, the file will be automatically loaded to the controller.

## 7. FAQ AND TROUBLESHOOTING

### 7.1 KNOWN ISSUES

#### 7.1.1 BL2500 with Rabbit 3000 Microprocessor Revision 0 (IL1T)

The Rabbit microprocessor R3000 Revision 0 (IL1T or IZ1T) has a bug on the parallel port F (see Z-World's TN228 <http://www.zworld.com/documentation/docs/refs/TN228/TN228.pdf>). The analog inputs and analog outputs use the PWM which uses parallel port F. Thus any operation on analog I/O affects the normal operation of outputs, serial RS485 transmitter enable signal, SPI enable signal and LEDs DS3 and DS4.

If you have an SBC BL2500 with the Rabbit 3000 microprocessor revision 0 (IL1T or IZ1T) and want to use the analog features bear in mind that outputs 0 to 3, RS485 and RabbitNet can not be used.

For more information about the Rabbit 3000 microprocessor revisions see Appendix B of [3].

#### 7.1.2 BL2500 with Large Sector Flash

The EMBEDDED PLC kernel writes the ISaGRAF application on flash to preserve the application on power cycles. This operation is done only with BL2500 with small sector flash. EMBEDDED PLC kernel saves the ISaGRAF application on Battery-Backed RAM if the BL2500 has large sector flash.

#### 7.1.3 ISaGRAF Floating Point Arithmetic

The floating point arithmetic implemented by Dynamic C for the Rabbit 3000 microprocessor is not 100% compliant with the IEEE Standard. When doing arithmetic operations with numbers close to the upper limit (3.4E38) instead of causing an overflow the result goes beyond the limits set by the standard. External applications, such as ISaGRAF Debugger, monitoring those values will fail because those values are invalid floating point (NaN).

When this condition happens, the ISaGRAF Debugger stops but leaves some processes running. If you experience this problem, close all ISaGRAF applications (including the Project Management). Re open the Project Management to resume ISaGRAF development.

#### 7.1.4 Reading/writing 32-bit integer/real analog variables via Modbus

EMBEDDED PLC supports reading and/or writing 32-bit integer/real analog variable through Modbus. Requests are handled by using two consecutive words (multiple registers) in little endian format, i.e. the less significant word goes first. The constraint is the Modbus address for analog variables must be odd number.

## 7.2 FAQ

### Q1. *What happens if I try to load the EMBEDDED PLC Firmware Kernel to a Target already running a licensed EMBEDDED PLC Kernel?*

The EMBEDDED PLC Utility does not check for an existing license before performing a loading and a new license is required after a Kernel is loaded to a Target. This means that after loading a new Kernel to a Target, a new User Reference Code is generated and you will need to contact OEM Technology Solutions or your local distributor to obtain a new license key to activate the EMBEDDED PLC Kernel.

### Q2. *Which are the Modbus function codes supported by EMBEDDED PLC?*

The EMBEDDED PLC BL2500 supports the following Modbus function code:

1	read N bits
3	read N words
5	write 1 bit
6	write 1 word
16	write N words

These are the function codes supported by ISaGRAF (see Section C.8.2 of [2]).

### Q3. *How can I change the assigned serial port number to the RS-232-to-USB converter cable on Windows XP?*

Open **Control Panel** → **System**. Click on **Device Manager**. On the Device Manager window expand the Ports (COM & LPT) category and select the **USB Serial Port (COMx)**. Select **Action** → **Properties** on the menu bar. On the USB Serial Port (COMx) Properties window click on **Port Setting** tab and click on **Advanced...** On the Advanced window change the COM port number to within COM1 to COM4 range. For more information about device settings contact your local system administrator.

### Q4. *Can I use the other serial ports on the BL2500 from an ISaGRAF application?*

The EMBEDDED PLC Firmware Kernel Version 1.04 uses one RS232 (serial port E) or one RS485 (serial port D) to communicate with the ISaGRAF Workbench or Modbus master. Contact OEM Technology Solutions or your local EMBEDDED PLC distributor for information about custom solutions for the EMBEDDED PLC Kernel.

### Q5. *Can I have 2 analog outputs instead of 1 analog input and 1 analog output?*

The EMBEDDED PLC Firmware Kernel Version 1.04 has the analog I/O configuration fixed. For more information about custom I/O configuration on the EMBEDDED PLC BL2500 contact OEM Technology Solutions of your local EMBEDDED PLC distributor.

### Q6. *Can I use RabbitNet with EMBEDDED PLC BL2500?*

In Version 1.04 of the EMBEDDED PLC BL2500 BSP RabbitNet is not supported. Contact OEM Technology Solutions or your local EMBEDDED PLC distributor for information about features to be implemented in upcoming versions.

### Q7. *Do I need to keep the programming cable connected to the Target all the time?*

No. The programming DIAG cable is used only for entering license key or Target configuration parameters values. After that it can be disconnected.

**Q8. I already have a version of ISaGRAF Workbench V3.50 installed and licensed. What should I do or install to make it EMBEDDED PLC compatible?**

If you already have an ISaGRAF Workbench V3.50 running on your Host PC, use the following instructions to make your ISaGRAF Workbench compatible with EMBEDDED PLC:

- (a) Download the **ISaGRAF\_V3.50.zip** file from OEM Technology Solutions website (<http://www.oem.net.au>).
- (b) Extract all files to a local directory **<ISaGRAF Install Dir>**.
- (c) Copy **<ISaGRAF Install Dir>\EXE\RABBIT.RSC** and **<ISaGRAF Install Dir>\EXE\ISATXT.ERR** to where your ISaGRAF main directory resides **<ISaGRAF Main Dir>\EXE** (for example, C:\ISAWIN\EXE). Confirm yes at overwriting ISATXT.ERR file.
- (d) Edit **<ISaGRAF Main Dir>\EXE\RSCDEF.RSC** and add the following line:

```
Resource=RABBIT.rsc
```

This line will add the "RABBIT: TIC code for Rabbit-based controllers" in the Targets list in the Compiler Options window of the ISaGRAF Programs Manager. You will have to recompile all your programs against this TIC code type in order to work with the EMBEDDED PLC BL2500.

**Q9. I have a BL2500 with 256K Flash. Can I use EMBEDDED PLC BL2500?**

The EMBEDDED PLC Firmware Kernel for BL2500 Version 1.04 was built specifically for the BL2500 with Rabbit core module RCM3200 (10/100BaseT, 512K Flash, 256K + 512K SRAM, 44.2 MHz clock speed, Z-World P/N: 101-0602). If you have any special requirements regarding targets that EMBEDDED PLC supports, visit OEM Technology website or contact sales directly via phone +61 2 99669424 or email [sales@oem.net.au](mailto:sales@oem.net.au).

**Q10. What does the letter C after the BL2500 in the BSP filename stand for?**

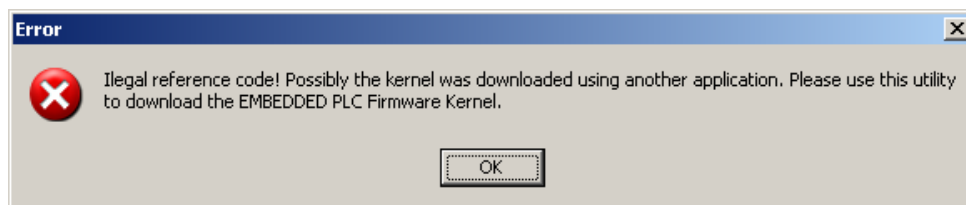
The 'C' letter in the filename **BL2500C\_BSP\_V1.04\_9-0003-006.zip** corresponds to the type of the BL2500 board supported by EMBEDDED PLC. Thus, the letter C corresponds to the BL2500 with Rabbit core module RCM3200 (10/100BaseT, 512K Flash, 256K + 512K SRAM, 44.2 MHz clock speed). At this moment only the BL2500 mentioned above is supported by EMBEDDED PLC.

**Q11. Can I use the EMBEDDED PLC Utility to download binary files compiled with Dynamic C?**

No. The EMBEDDED PLC Utility works only with EMBEDDED PLC firmware kernels. Use Rabbit Field Utility instead.

**Q12. Can I use the Rabbit Field Utility to download the EMBEDDED PLC Firmware Kernel to the Target?**

No. If you do so, when you tried to enter the run-time license using the EMBEDDED PLC Utility the following message is displayed:



## 7.3 TROUBLESHOOTING

### 7.3.1 Common Errors

Listed below are some solutions of common errors that you may encounter with EMBEDDED PLC products.

#### 7.3.1.1 Communications

If you experienced problems with the communication between the Target and either the ISaGRAF Workbench or a Modbus master check the items below:

- Disconnect all the physical I/Os connected to the Target and try again.
- Check that the Modbus Slave Number value in the Target is the same as the Target Slave Number in the ISaGRAF Workbench.
- If you are using Ethernet link, check that IP address, Netmask and Default Gateway values are correct in the Target. Check also that the port in the ISaGRAF Workbench is set to 1100.
- If you are using RS232 or RS485 link remember that either the ISaGRAF Workbench or the Modbus master can be connected to the Target at a certain time. Check that the serial port parameters on the ISaGRAF Workbench and/or Modbus master are the following: Baud rate (19200 to 600, depending on the Target configuration), no parity, 8 data bits, 1 stop bits and no flow control. If you are using a RS232-to-USB converter cable check that the COM port assigned to it is within COM1 to COM4 range. If not follow the instructions described in Q3 of the FAQ section.
- The minimum value of the polling period from ISaGRAF Workbench or a Modbus master must be greater than the PLC cycle execution time. In any case the absolute minimum values for the polling period must be greater than the following:

Modbus over TCP/IP: 50 ms

Modbus over RS232 or RS485: 200 ms

#### 7.3.1.2 ISaGRAF Workbench for EMBEDDED PLC

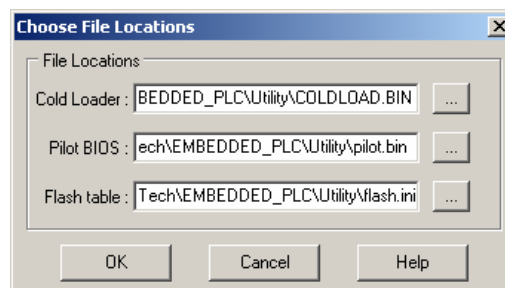
If you experienced problems downloading an application to the Target check the items below:

- Check that you have communication with the Target (check items above).
- In order to work with EMBEDDED PLC make sure that the "RABBIT: TIC code for Rabbit-based controllers" is selected in the Compiler options list before making and downloading the application.

#### 7.3.1.3 EMBEDDED PLC Utility

Check the items below if you have problems downloading the EMBEDDED PLC Firmware Kernel:

- Check that the programming cable is connected through DIAG connection to the Target.
- Check that no other application is using the selected COM port.
- Check the location of the cold loader, pilot BIOS and Flash initialization files. Select **Setup** → **File Locations...** from the main menu bar. Check that the Cold loader (**COLDLOAD.bin**), Pilot BIOS (**pilot.bin**) and Flash table (**flash.ini**) files locations are correct. It should point to where the EMBEDDED PLC Utility is installed (default **c:\OEMTech\EMBEDDED PLC\Utility**). Press **OK**.



### 7.3.2 Before Contacting Technical Support

Some things you should try before you contact Technical Support are:

- Check out the documentation.
- Consider recent changes on your system. If something used to work, think about what may have changed. New software installation or general system changes can affect performance and general functionality of other software on your system.
- Verify that the entire system has good, low-impedance, separate grounds for analog and digital signals. The BL2500 is often connected between the host PC and another device. Any differences in ground potential can cause serious problems that are hard to diagnose.
- Do not connect analog ground to digital ground anywhere.
- Verify that the power supply has enough capacity and filtering to support the BL2500.

If you cannot find an answer to your technical question in the product documentation or help system, send your request to OEM Technology Solutions technical support via email [support@oem.net.au](mailto:support@oem.net.au).

Please try to define the problem before you contact Technical Support so that you can repeat the steps that led to the problem and specifically identify when and how the problem occurred. The Technical Support representative will need to know exactly what the problem is in order to provide help. These steps will help us pinpoint and solve your problem more quickly.

Please have the following information available:

- Hardware environment: Target details (BL2500 model), Host PC details and a brief description of the physical I/Os used.
- Software environment: Windows Operating System.
- EMBEDDED PLC filenames used.
- EMBEDDED PLC Kernel version: You can obtain this information from the Target Configuration Window (Module Version, Kernel Version, Kernel Description).
- EMBEDDED PLC license information.
- Description of the problem or error, including specific text or error messages.
- Steps to reproduce the problem, if it is reproducible.



This page is intentionally left blank

## 8. SPECIFICATIONS

### 8.1 ELECTRICAL AND MECHANICAL SPECIFICATIONS

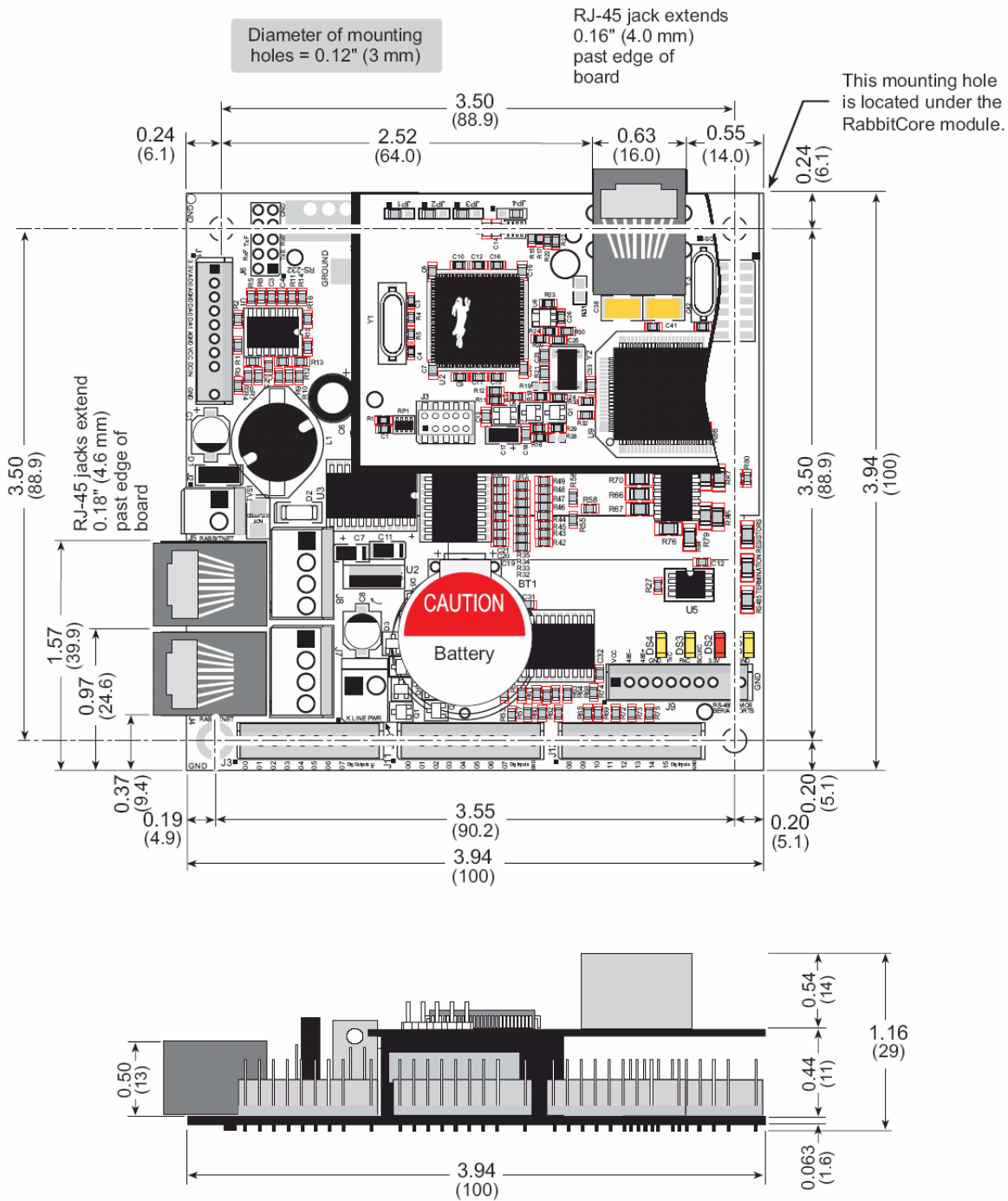


Figure 13: BL2500 Dimensions

**Table 3: BL2500 Electrical, Mechanical and Environmental Specifications**

<b>Microprocessor</b>	Rabbit 3000 @ 44.2 MHz
<b>Ethernet Port</b>	10/100 Base-T
<b>Flash Memory</b>	512K
<b>SRAM</b>	512K (program) + 256K (data)
<b>Backup Battery</b>	3 V lithium coin-type, 1000 mA-h, supports RTC & SRAM
<b>Digital I/O</b>	16 inputs: 15 protected to $\pm 36$ V DC, 1 protected to +5 – 36 V; threshold is 1.5 V nominal 8 outputs: sink up to 200 mA each, 36 V DC max. standoff voltage
<b>Analog Inputs</b>	One 10-bit resolution, 8-bit accuracy, input range 0.1 – 3.1 V, 10 samples/s
<b>Analog Outputs</b>	Two 9-bit PWM, 0.1 – 3.1 V DC, 17 ms settling time <sup>1</sup>
<b>RabbitNet</b>	Yes <sup>2</sup>
<b>Serial Ports</b>	6 serial ports <sup>3</sup> : - 1 RS-485 - 2 RS-232 or 1 RS-232 (with CTS/RTS) - 1 CMOS level asynchronous or clocked serial port - 1 expansion serial port for multiplexed to two RS-422 clocked SPI ports - 1 CMOS compatible serial port for programming/debug
<b>Real-Time Clock</b>	Yes
<b>Timers</b>	10 8-bit timers (6 cascadable from the first) and one 10-bit timer with 2 match registers <sup>2</sup>
<b>Watchdog/Supervisor</b>	Yes
<b>Power</b>	8 – 40 V DC, 1 W typical w/ no load
<b>Temperature</b>	-40°C to +70°C
<b>Humidity</b>	5% to 95%, noncondensing
<b>Connectors</b>	Friction-lock connectors: - five polarized 9-position terminals with 0.1" pitch - two 2-position power terminals with 0.156" pitch - two 4-position terminals with 0.156" pitch
<b>Board Size</b>	100 x 100 x 29 mm
<b>Part Number</b>	101-0602

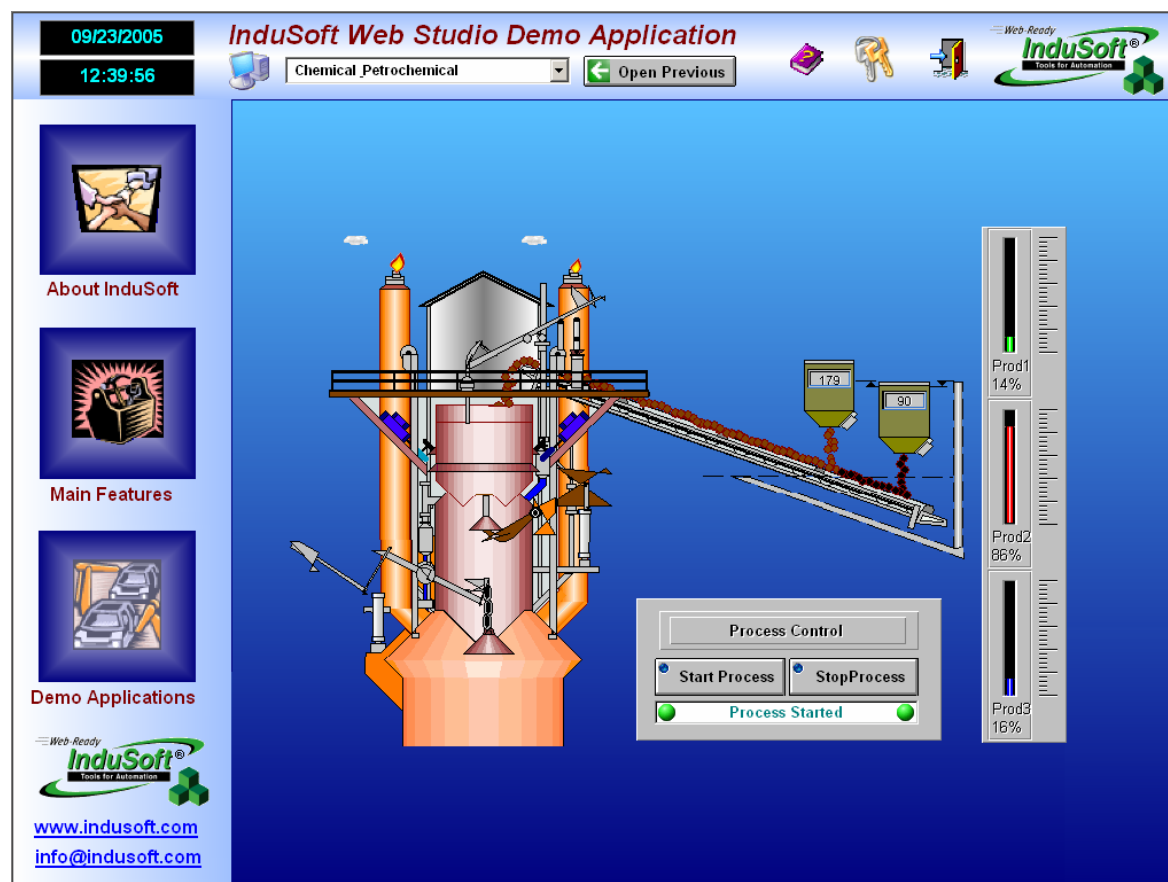
<sup>1</sup> Only 1 analog output is available for EMBEDDED PLC.

<sup>2</sup> Not supported in EMBEDDED PLC at this present time.

<sup>3</sup> Only 1 RS232 (serial port E) and 1 RS485 (serial port D) serial ports are supported in EMBEDDED PLC at this present time.

## 9. ABOUT INDUSOFT

Indusoft® Web Studio (IWS) is a powerful, integrated collection of automation tools that include all the building blocks needed to develop modern HMI, SCADA, instrumentation and embedded applications running on native Microsoft Windows XP, 2000, NT, CE and CE.NET or in Internet and intranet environments. Indusoft Web Studio provides a simple drag and drop, point and click development environment which mimics the most complex behaviours of you live processes. Indusoft Web Studio is ideal e-automation solution for industry.



IWS applications consist of animated operator-interface screens, communication drivers (for PLCs and I/O protocols such as Modbus, DFS, Profibus, etc.), tags database, and additional modules such as alarm monitors, logic, trend charts, recipes, schedulers and security system.

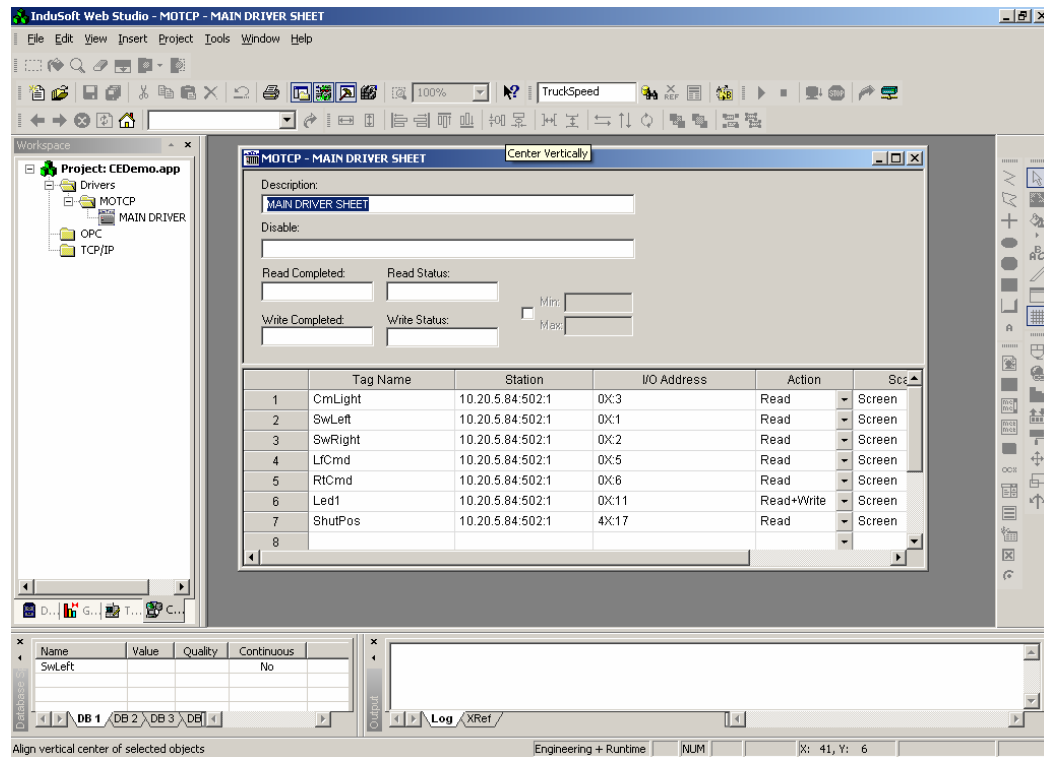
IWS applications interface with industrial I/O systems and other Windows applications in the run-time environment using ODBC, DDE, NetDDE, OPC or TCP/IP protocols.

For more information about IWS contact OEM Technology Solutions (<http://www.oem.net.au>).

### 9.1 USING INDUSOFT WEB STUDIO WITH EMBEDDED PLC

The EMBEDDED PLC implements Modbus over TCP/IP or RTU over RS232/RS485 to communicate with Modbus masters such as Indusoft Web Studio.

Indusoft Web Studio (IWS) applications can be quickly developed to be used in conjunction with EMBEDDED PLC since it has built-in communication drivers for Modbus.



You can quickly add the Modbus driver on the Workspace, define its operational parameters and define the I/O variables (tags) that will be exchanged between the EMBEDDED PLC and the IWS application.

## INDEX

**B**

BL2500	
A/D converter .....	36
D/A converter .....	37
digital inputs .....	35
digital outputs .....	36
Ethernet port .....	39
Main features .....	1
pinouts .....	35

**E**

EMBEDDED PLC	
Application kit contents .....	3
Board Support Package (BSP) .....	7
Definition .....	1
Firmware Kernel .....	1
software installation .....	7
Target PLC .....	1
Utility .....	7
Workbench .....	1

**F**

Firmware Kernel	
configuring .....	50
licensing .....	50
loading .....	49

**I**

Indusoft .....	62
ISaGRAF	
hardware license .....	8
installation .....	8

link setup .....	17
software license .....	8
<b>SpotLight</b> .....	13, 17
Workbench .....	1

**M**

Modbus	
configuration .....	51

**N**

network configuration .....	11
-----------------------------	----

**R**

RabbitNet .....	35
RS232	
cable specification .....	12

**S**

sample applications .....	12
b25qld .....	15
b25rota .....	15
b25scope .....	15
blinkseq .....	15
bottlef .....	15
rfdemo .....	15
rfsample .....	15
rfsfc .....	15
rfstack .....	15
sorting .....	15
SORTING .....	12
Serial Ports	
RS-232 .....	38
RS-485 .....	38