

[USER
GUIDE](#)[GETTING
STARTED](#)[SOFTWARE](#)[PRODUCT](#)[ON-BOARD
DEVICES](#)[BOARD
DESIGN](#)[RECOVERY
PROCEDURE](#)[FLASH
TOOL](#)**NEW AT91SAM7X-EK Kit NEW**

The AT91SAM7X-EK evaluation kit enables evaluation capabilities and development of applications running on an AT91SAM7X256/128.

This guide focuses on the AT91SAM7X-EK board as an evaluation platf

The AT91SAM7X-EK package contains the following items:

- an AT91SAM7X-EK board,
- one A/B-type USB cable,
- one crossed serial RS232 cable,
- one RJ45 crossed Ethernet cable,
- universal input AC/DC power supply with US and EU plug adapter,
- one DVD-ROM containing summary and full datasheets, datasheets with electr and mechanical characteristics, application notes and getting started documen
- all development boards and AT91 microcontrollers. An AT91 software package assembly listings is also provided. This allows the user to begin evaluating the Thumb® 32-bit microcontroller quickly.

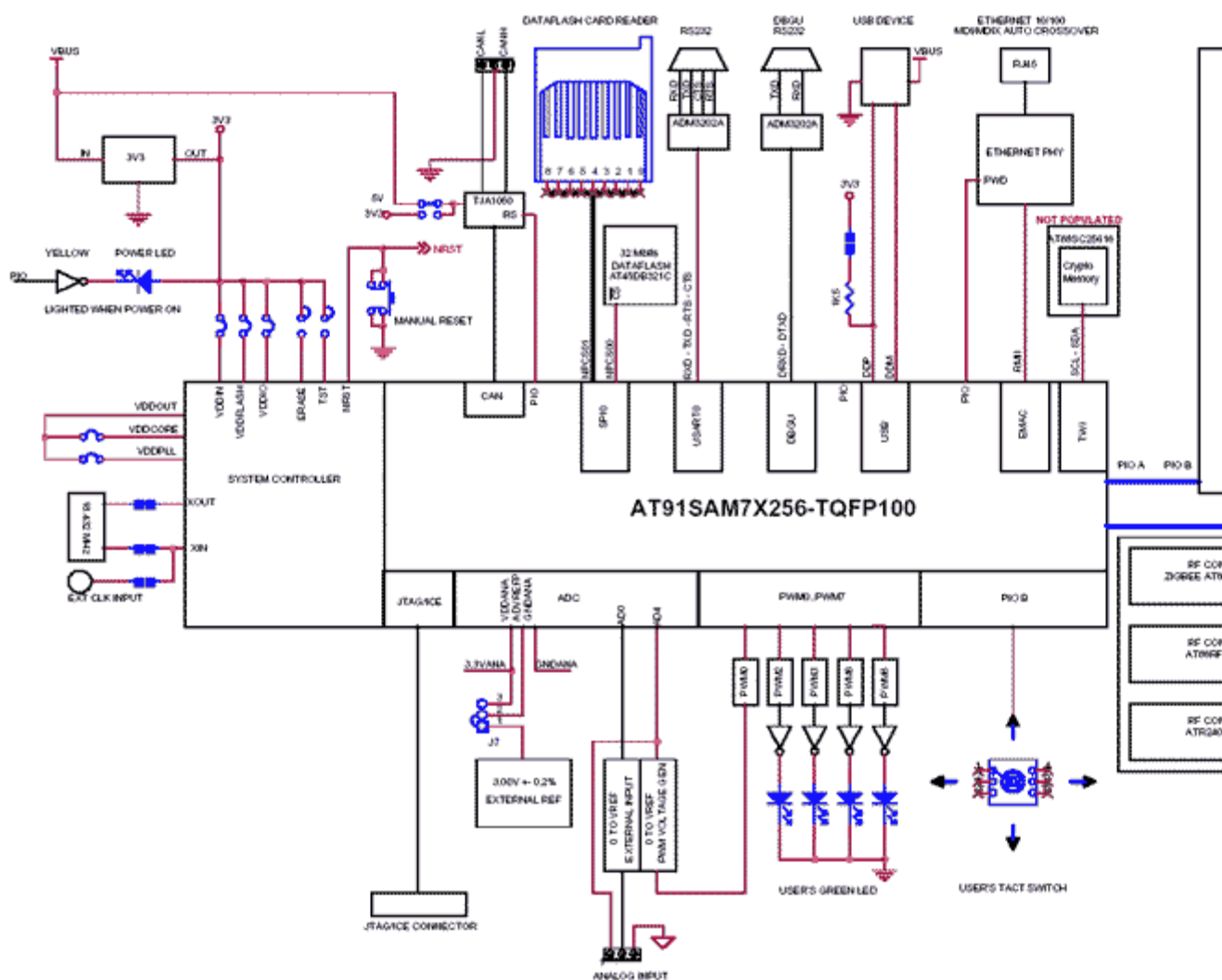
NEW AT91SAM7XC-EK Kit NEW

The AT91SAM7XC-EK evaluation kit enables evaluation c and code development of applications running on an AT91SAM7XC256/1: This guide focuses on the AT91SAM7XC-EK board as an evaluation platfo

The AT91SAM7XC-EK package contains the following items:

- an AT91SAM7XC-EK board,
- one A/B-type USB cable,
- one crossed serial RS232 cable,
- one RJ45 crossed Ethernet cable,
- universal input AC/DC power supply with US and EU plug adapter,
- one DVD-ROM containing summary and full datasheets, datasheets with electrical and mechanical characteristics, application notes and getting started documents f
- all development boards and AT91 microcontrollers. An AT91 software package wil assembly listings is also provided. This allows the user to begin evaluating the AT91 ARM® Thumb® 32-bit microcontroller c

Overview and Block Diagram**AT91SAM7X-EK**



General Features:

The board is equipped with an AT91SAM7X256 (100-pin LQFP Green package) together with the following interfaces:

- USB device port,
- DBGU serial communication port,
- RS232 serial communication port with RTS/CTS,
- JTAG/ICE debug interface connector,
- serial CAN communication ports,
- RMII Ethernet 100-base TX with auto MDIX capability,
- buffered analog input and PWM output,
- Power LED and general-purpose LEDs,
- DataFlash® card slot,
- expansion connector,
- Atmel 32 Mbit Serial DataFlash® (AT45DB321C-CNC)

On-board Devices - Datasheet -

Device	Description
Memory	<ul style="list-style-type: none"> • 32-megabit Serial DataFlash®.

Clock Circuitry	<ul style="list-style-type: none"> • Atmel Crypto Memory AT88SC25616.
Reset Circuitry	<ul style="list-style-type: none"> • 18.432 MHz standard crystal. • Reset push button.
Power Supply Circuitry	<ul style="list-style-type: none"> • Precision Micropower Low Dropout Voltage Reference LM4120. • Low-Dropout Regulator with Reverse Current Protection
User Interface	<ul style="list-style-type: none"> • 4 Green Leds connected to the PIO lines,?? • One 4-direction button type joystick, • EMI FILTER AND LINE TERMINATION FOR USB UPSTREAM PORTS.
Serial Communication lines	<ul style="list-style-type: none"> • 10/100 Mbps Fast Ethernet Physical Layer Single Chip Transceiver. • RS232 Transceiver. • High speed CAN transceiver
Analog	<ul style="list-style-type: none"> • Rail to rail, Low Power Operational Amplifiers
Socket	<ul style="list-style-type: none"> • DataFlash Card socket, • Male 9-point RS232 standard socket, • Standard Device USB connector.
JTAG/ICE	<ul style="list-style-type: none"> • 20-pin JTAG interface connector.
Discret devices	<ul style="list-style-type: none"> • P-Channel 2.5-V (G-S) MOSFET

Board Design

Description and link to File

[PCB Design Project under Orcad \(Orcad version 9.2.3\)](#)

[PCB Layout \(Use free Allegro viewer\)](#)

[Bill Of Material \(text format\)](#)

[Gerber Files](#)

Software Package

Description	Package	C
AT91SAM7X128		
IAR Projects:		
This zip files embeds all related AT91SAM7X128 software projects for IAR Embedded Workbench Software Development Tools.	Zip File	:
Keil Projects:		
	none	
AT91SAM7X256		
IAR Projects:		
This zip files embeds all related AT91SAM7X256 software projects for IAR Embedded Workbench Software DevelopmentTools.	Zip File	:
Keil Projects:		
This zip files embeds all related AT91SAM7X256 software projects for µVsion 3 Development Development Tools.	Zip File	:

Recovery Procedure

Description	Attached Document

Flash Tool

Utility Description	Attached Document
Your Smart Flash solution: SAM-BA™ Application is a Windows© Application Flashing through USB or serial port COM for all AT91SAM Flash Based Products. SAM-BA™ is an Atmel application and free of use. Download it and use it.	User Guide Getting Started
A Multi Target Flash Tool: SAM-PROG Application is a Windows© Application allowing Multi-Flashing solution through USB for all AT91SAM Flash Based Products. SAM-PROG is an Atmel application and free of use. Download it and use it.	Getting Started

Other

Utility Description	Attached Document
---------------------	-------------------

© Copyright, 2005 Atmel Corporation. All rights reserved