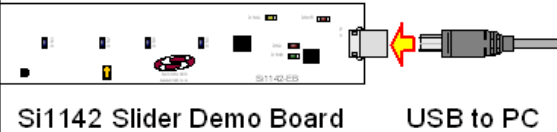
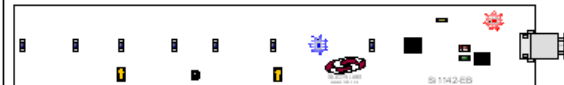


IRSLIDER2EK Si1142 DEMO BOARD QUICK-START GUIDE

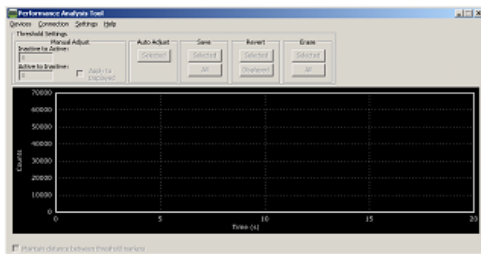
- 1** Connect the Si1142 Slider Demo Board to the PC using a USB cable. The red LED near the connector will light.



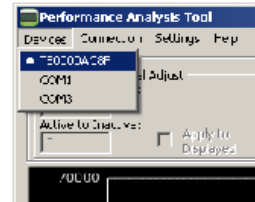
- 2** Wave your hand above the board. The visible blue LEDs will light according to the side-to-side position of your hand above the board. When a pause or swipe gesture is recognized, the LEDs will briefly flash a pattern to indicate the gesture and then return to indicating the position. Refer to the *Si1142 Infrared Slider Demo User's Guide* for more details.



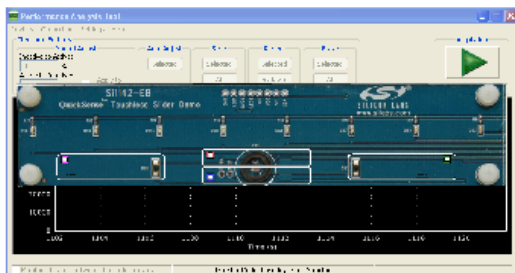
- 3** This board is also compatible with the QuickSense™ Performance Analysis Tool version 2.30, available from the website. Starting the software will display the main analysis window.



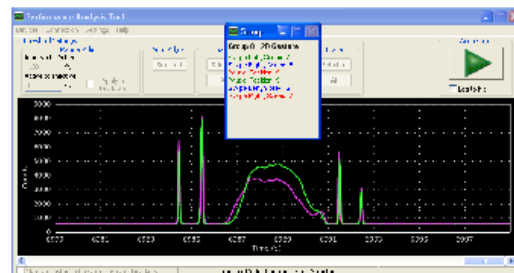
- 4** Click on *Devices*, and select the Slider Board from the list (the board will show up as the letters "TS" followed by an 8-character serial number)



- 5** Check the signals that you wish to monitor on the picture of the board, and then press the green *Acquisition* arrow to begin data collection.



- 6** In addition to the real-time data graphed in the main window, any recognized gestures will be displayed in separate Group windows.



For more information, including supporting software and documentation, please visit the Silicon Labs Si1142 Slider Demo website located at <http://www.silabs.com/IrSlider2EK>.