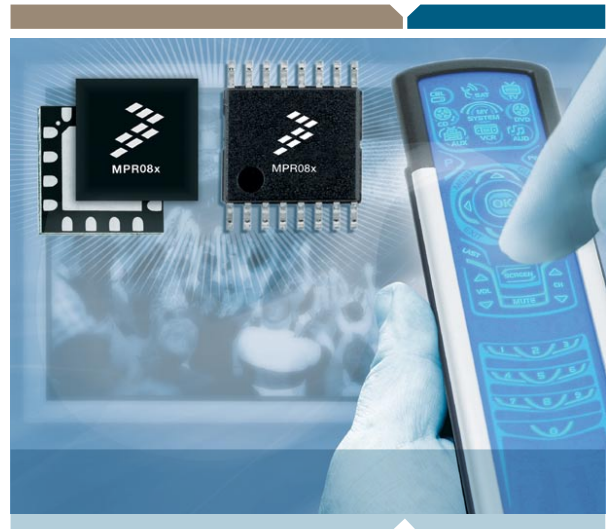


The MPR083 evaluation kit includes an MPR083 evaluation kit board, USB cable, and CD with PC demo application and MPR083 collateral. This section describes how to setup the evaluation board to run the PC application.

**MPR083 Evaluation Kit
Board Connection / Setup**

Introduction



Proximity Sensors

MPR083 Evaluation Kit Board Connection / Setup

Learn More: For more information about Freescale products, please visit www.freescale.com/proximity.

Freescale® and the Freescale logo are trademarks of Freescale Semiconductor, Inc. All other product or service names are the property of their respective owners. © Freescale Semiconductor, Inc. 2007

Document Number: PROXKITMPR083QSG
REV 0



freescale.com/proximity



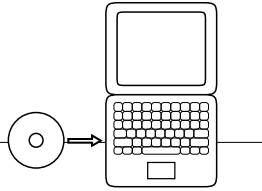
MPR083 Evaluation Kit

Step-by-Step Installation Instructions

STEP 1

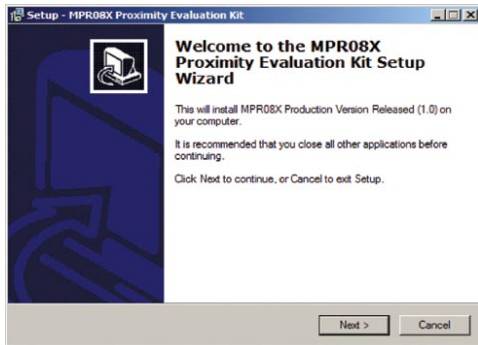
Insert CD to PC

Get Started by installing the software.



STEP 2

Install the PC application from the disk content.



STEP 3

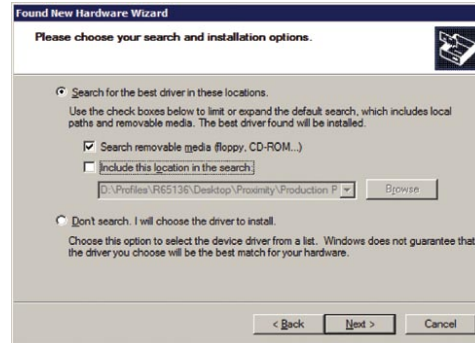
Connect the USB cable to the MPR083 Evaluation Kit

Preview the MPR083 image on reverse side (page 2) of this setup guide to get familiar with the MPR083 Evaluation board.

STEP 4

Install New Hardware

When the "Found New Hardware Wizard" appears select the "Install from a list or specific location (Advanced)" option under "What do you want the wizard to do?"



Select "Search for the best driver in these locations" and check the "Search removable media (floppy, CD-ROM...)" checkbox. The driver will automatically install.

STEP 5

Choose Board for Proper Setup

Select Start > Programs > MPR083 Proximity Evaluation Kit > MPR083 Evaluation Kit. When the "Select Proximity Sensor" screen appears, select the MPR083 radio button and select "OK".



STEP 6

Test the Rotary Touch Pad

Select Run and touch the rotary. If everything is installed correctly the graphic will update with the rotary pad being touched as black.

