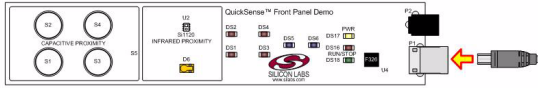
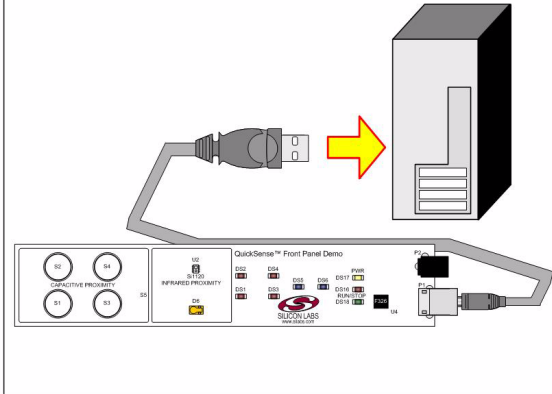


QUICKSENSE™ FRONT PANEL QUICK-START GUIDE

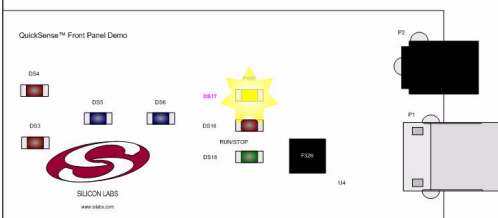
- 1** Connect the USB cable to the P1 USB connector on the QuickSense™ Front Panel board.



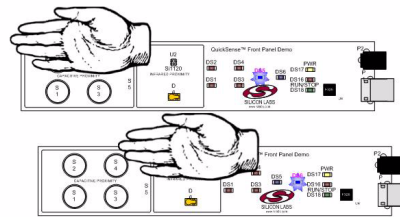
- 2** Connect the USB cable to a PC's USB port.



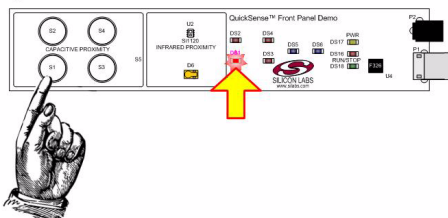
- 3** Wait for enumeration to complete. Watch for the LED labeled PWR to turn on.



- 4** Move a hand in close proximity to the area of the board labeled "CAPACITIVE PROXIMITY." The blue LED DS5 turns on. Move in close proximity to the area labeled "INFRARED PROXIMITY." The blue LED DS6 turns on.



- 5** Press the capacitive sensing pads S1-S4 on the board. Each will light a corresponding red LED when firmware senses a finger's presence.



- 6** Read the QuickSense™ Front Panel User's Guide for more information. Documentation and software are available at <https://www.silabs.com/FrontPanel>

