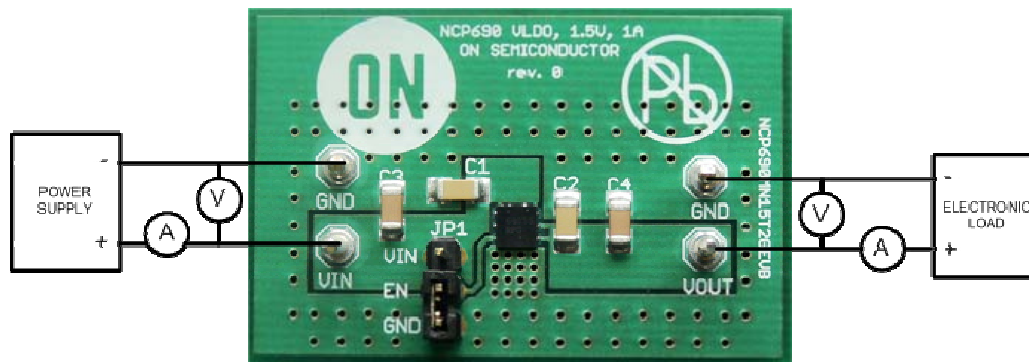


ON Semiconductor®



## Test Procedure for the NCP690, 1A, LDO

### Test Setup:



\* During the tests please leave JP1 disconnected.

Figure 1

### Required Equipment:

- 2 x Voltmeters
- 2 x Ampere meters
- DC Power Supply – up to 6V at 1A
- Electronic Load

**ON Semiconductor®**



## Test Procedure for the NCP690, 1A, LDO

### Test Procedure:

1. Connect the test setup as shown on Figure 1.
2. Set the Electronic Load to constant current mode at 1 amp.
3. Apply the Input Voltage of exactly .5 volts higher than the specified output voltage on the silkscreen.
4. Verify that the Voltage Regulator turns on and that the output voltage is equal to the required nominal value.
5. Turn off the input power supply.
6. End of the test.