

# LP55281 Evaluation Kit

National Semiconductor  
AN-1631  
Sami Kotijarvi  
June 2007



## LP55281 Overview

LP55281 is a quad RGB LED driver for handheld devices. It can drive 4 RGB LED sets and a single fun light LED. The boost DC-DC converter drives high current loads with high efficiency. The RGB driver can drive individual color LEDs or RGB LEDs powered from boost output or external supply. Built-in audio synchronization feature allows easy control of LP55281. Small micro SMD package or micro SMDxt package together with minimum number of external components is a best fit for handheld devices. LP55281 has also a LED test feature, which can be used for example in production for checking the LED connections.

## Evaluation Kit Overview

LP55281 Evaluation Kit is based on a modular system, where the actual evaluation board is plugged on top of the PC interface board. The interface operates through the USB port. The kit supports complete functional evaluation of the circuit. The evaluation kit consists of:

- LP55281 evaluation board
- USB interface board
- USB interface cable
- Audio cable and 3.5mm branch plug
- CD including:
  - Evaluation software for PC
  - LP55281 datasheet
  - MicroSMD package application note AN1112
  - MicroSMDxt package application note AN1412
  - PCB design application note AN1149
  - Evaluation kit document (this doc.)

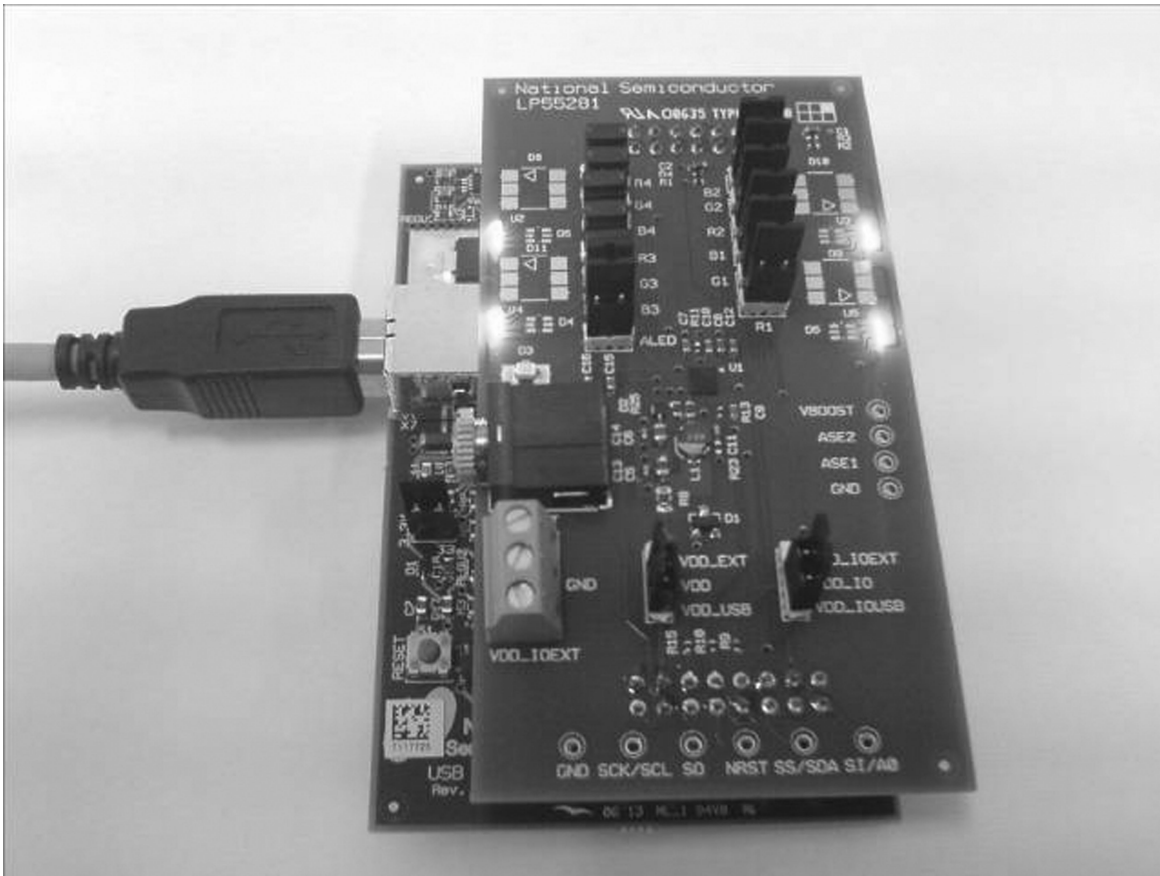


Figure 1. LP55281 Evaluation Board With USB Interface Board

30019515

## Evaluation Software

LP55281 evaluation software and some support files are supplied on the delivery CD together with all available documentation regarding the circuit. You can copy the software and the files to your PC's hard disk. The program and the support files must be in the same folder. The software is started by double-clicking its icon. The software does not require any installation.

This document describes the use of the **LP55281.exe** program.

The evaluation software is organized in tabs according to the main functions of the chip. On the left side of the tabs is shown

the whole register map of LP55281. Below the tabs are shown the registers, which are affected by the selected tab. Both register displays reflect immediately the changes you make by clicking the selection boxes or sliders in the tabs. The contents of the tabs should be mostly self-explanatory. One example register settings are included in the delivery CD and they can be loaded from the File/Open menu. You can similarly save your own settings.

ADR	Register	Value
00H	RE01	0000 0000
01H	GREEN1	0000 0000
02H	BLUE1	0000 0000
03H	RED2	0000 0000
04H	GREEN2	0000 0000
05H	BLUE2	0000 0000
06H	RED3	0000 0000
07H	GREEN3	0000 0000
08H	BLUE3	0000 0000
09H	RED4	0000 0000
0AH	GREEN4	0000 0000
0BH	BLUE4	0000 0000
0CH	ALED	0000 0000
0DH	ASYNC CTRL1	0000 0000
0EH	ASYNC CTRL2	0000 0000
0FH	Boost output	0011 1111
10H	Frequency sel	0000 0111
11H	Enables	1100 0000
12H	LED test	0000 0000
13H	ADC output	0000 0000
00H	Reset	0000 0000

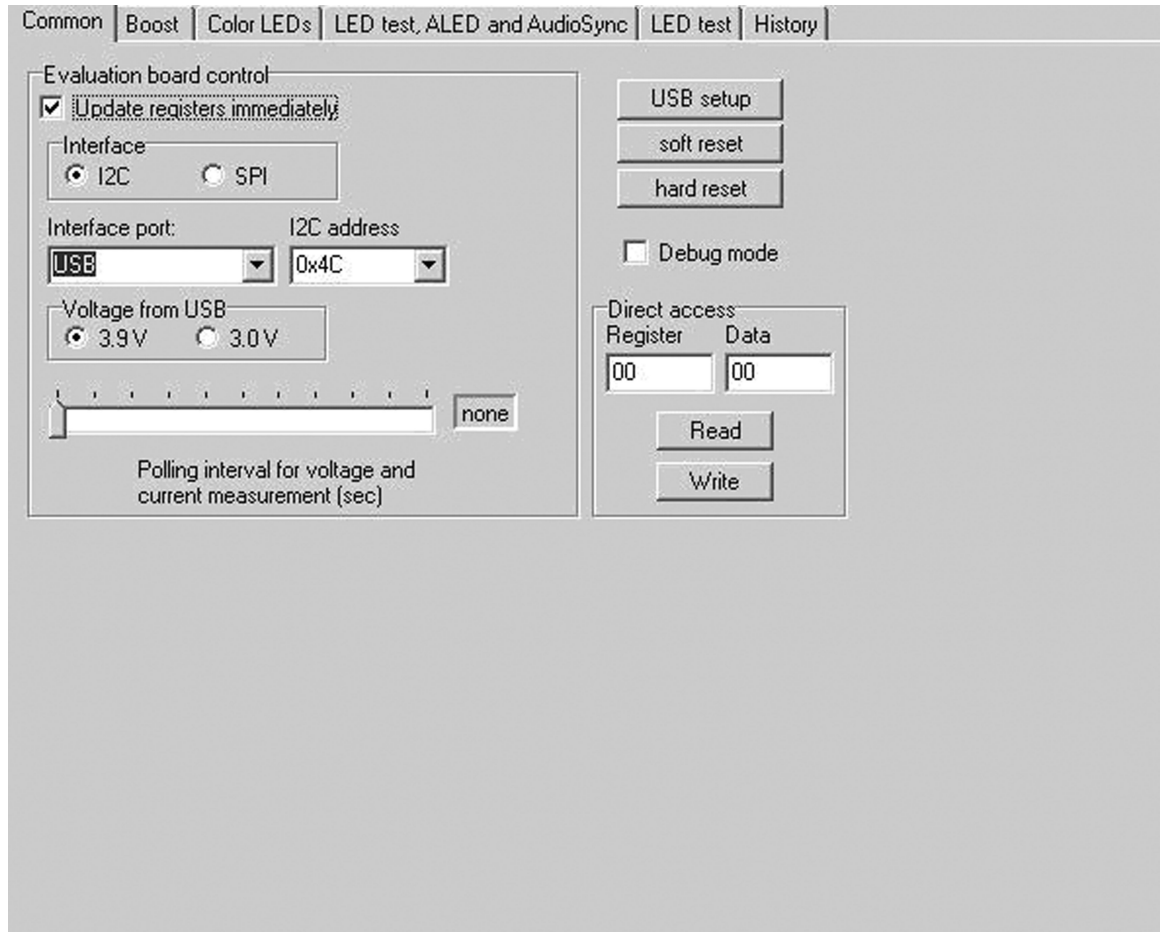
  

ADR	Register	Default	D7	D6	D5	D4	D3	D2	D1	D0	Value
0FH	Boost output	0011 1111	boost[7]	boost[6]	boost[5]	boost[4]	boost[3]	boost[2]	boost[1]	boost[0]	0011 1111
10H	Frequency sel	xx00 x111			FPM1	FPM2		FRO SEL[2]	FRO SEL[1]	FRO SEL[0]	0000 0111
11H	Enables	001x 0000	NSTBY	EN BOOST	EN AutoLoad		EN RGB4	EN RGB3	EN RGB2	EN RGB1	1100 0000

Figure 2. LP55281 Evaluation Software User Interface

30019502

## COMMON TAB



30019510

Figure 3. LP55281 Common Tab

The Common Tab contains evaluation board control functions. Automatic writing (Update registers immediately) is enabled by default. It means that a write operation is done after every mouse click. If you want to change several settings in one or more tabs and write the register(s) after making all the changes, you can disable automatic writing. Then after the changes you have to initiate the register write by clicking the right mouse key with the cursor in the Register Map area. From the pop-up menu you can choose to write all registers or just a selected register. The same pop-up lets you write default values to one or all registers and read one or all registers.

Interface can be selected between I<sup>2</sup>C and SPI. For I<sup>2</sup>C there are two addresses available, 0x4C and 0x4D. Interface port is always USB.

The regulated voltage supplied from the **USB board** can be set to 3.0 or 3.9V. The raw voltage from the USB port is 5V

and maximum current is 500mA. By changing jumper J1 on the **USB board** to 5V position the raw voltage is connected to the evaluation board and power from USB board can be maximally used for LEDs.

USB board can measure voltages from the evaluation board. On the LP55281 board the circuit  $V_{DDIO}$  and the converter output voltage  $V_{BOOST}$  are measured. The current supplied by the USB board to the evaluation board is measured. Measurement is enabled, when the Polling interval in the Common tab is set. Measurement results are shown on top of the window.

Device can be reset by hard reset or by soft reset. Soft reset writes to register 0x60.

By checking the debug mode you can write or read data directly to or from addresses given in Direct Access field.

## BOOST TAB

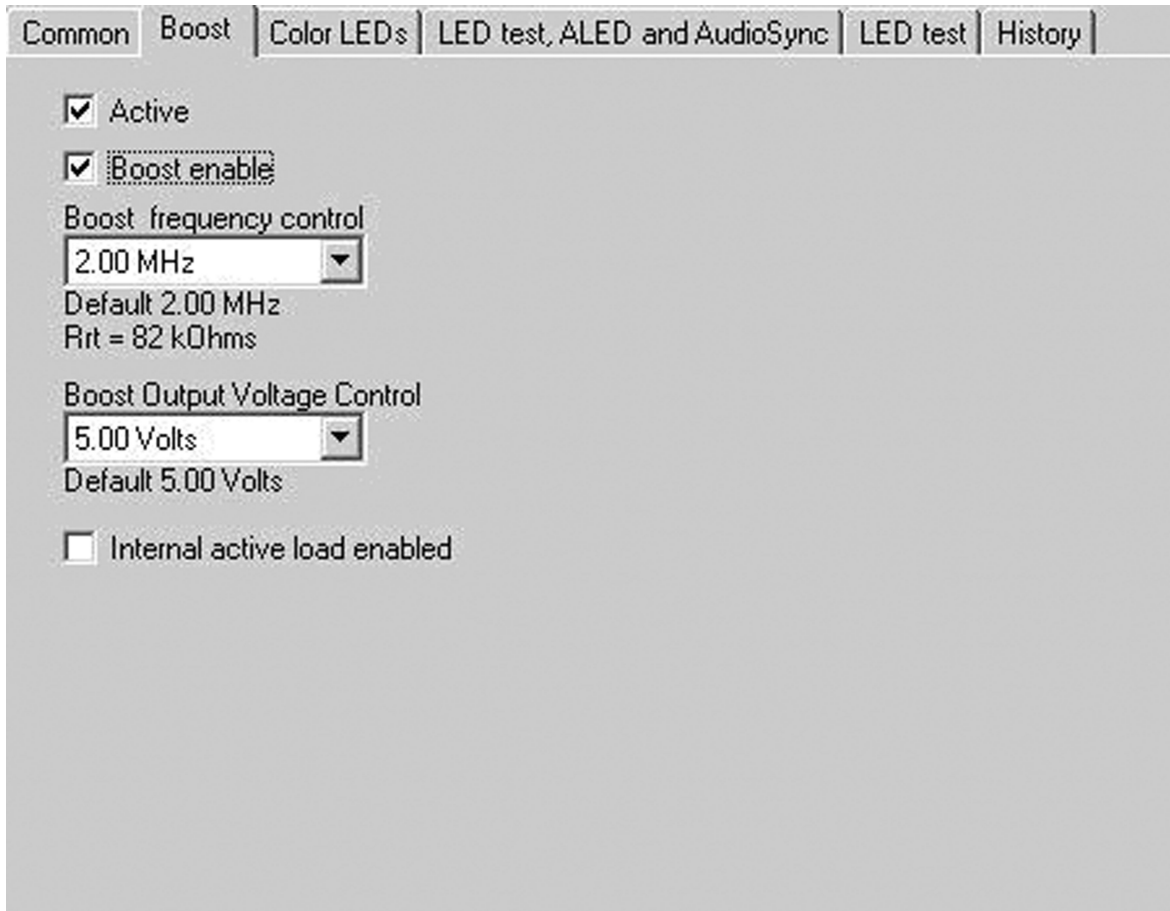


Figure 4. Boost Tab

30019503

Boost is enabled in this tab by checking the boost enable. The internal active load can be enabled to eliminate pulse skipping of the boost converter. Active load will consume some power when the boost output current is small. It will decrease effi-

ciency at very light load conditions. Also the boost PWM frequency and output voltage is set here. One can also enable the Boost internal active load.

## COLOR LEDS TAB

Common | Boost | Color LEDs | LED test, ALED and AudioSync | LED test | History

Max current for RGB1-RGB4, mA: 22 | Rrgb = 5540 Ohms | PWM frequency: 10 kHz

Sub-tab	Color	Current	PWM
RGB1	Red	0.25*1	100.00%
RGB2	Green	0.25*1	0.00%
RGB3	Blue	0.25*1	0.00%
RGB4		<input type="checkbox"/> RGB enabled	

30019514

Figure 5. Color LEDs Tab

For each RGB LED, there is its own subtab in the Color LEDs tab. In each subtab (RGB1-4) you can enable the RGB, set its PWM with the slider and select its current from the drop-down menu.

The PWM frequency can be controlled in this tab also.

The Max current selection can be used to show the required current set resistor value for a given LED current. It doesn't control the current in any way.



## LED TEST, ALED AND AUDIO SYNCHRONIZATION TAB

**Figure 6. LED Test, ALED and Audio Sync. Tab**

30019504

In this tab LED test, ALED and Audio Sync. is controlled. LED test can be done automatically with LED Auto Test by pushing Start button. Test will go thru all the leds and indicate if they are connected or not. LED test can be done by using ADC also. Test is enabled by checking the Test enable box. Desired LED is chosen from pull-down menu and value can be read by pushing the Read ADC button. Note that LED test will not work correctly unless the PWM of the LED under test is 100%. Also the LED current should be at minimum.

ALED current is controlled with Current slider. Below the slider is the Audio synchronization enable box, which sets the ALED into Audio Sync. mode.

With audio synchronization controls, you can enable the Automatic Gain Control, set gain control level manually, select Speed from pull-down menu, select DC filter between 80 Hz or 510 Hz and set the Threshold.

## LED TEST TAB

The screenshot shows the 'LED test' tab in a software interface. At the top, there are navigation tabs: 'Common', 'Boost', 'Color LEDs', 'LED test, ALED and AudioSync', 'LED test', and 'History'. Below the tabs, there are three configuration fields: 'Boost voltage' set to '5.00 Volts', 'RGB 1-4 current' set to '0.25\*Imax', and 'ALED current, mA' set to '05'. A 'Start test' button is located below these fields. Below the button is a table with the following data:

	Code HEX	Code DEC	Voltage	V forward
Boost	B8	184	5,03 V	
Red 1	77	119	3,25 V	1,78 V
Green 1	51	81	2,21 V	2,82 V
Blue 1	4E	78	2,13 V	2,90 V
Red 2	77	119	3,25 V	1,78 V
Green 2	46	70	1,91 V	3,12 V
Blue 2	4F	79	2,16 V	2,87 V
Red 3	76	118	3,23 V	1,80 V
Green 3	50	80	2,19 V	2,84 V
Blue 3	4F	79	2,16 V	2,87 V
Red 4	76	118	3,23 V	1,80 V
Green 4	51	81	2,21 V	2,82 V
Blue 4	4E	78	2,13 V	2,90 V
ALED	4F	79	2,16 V	2,87 V

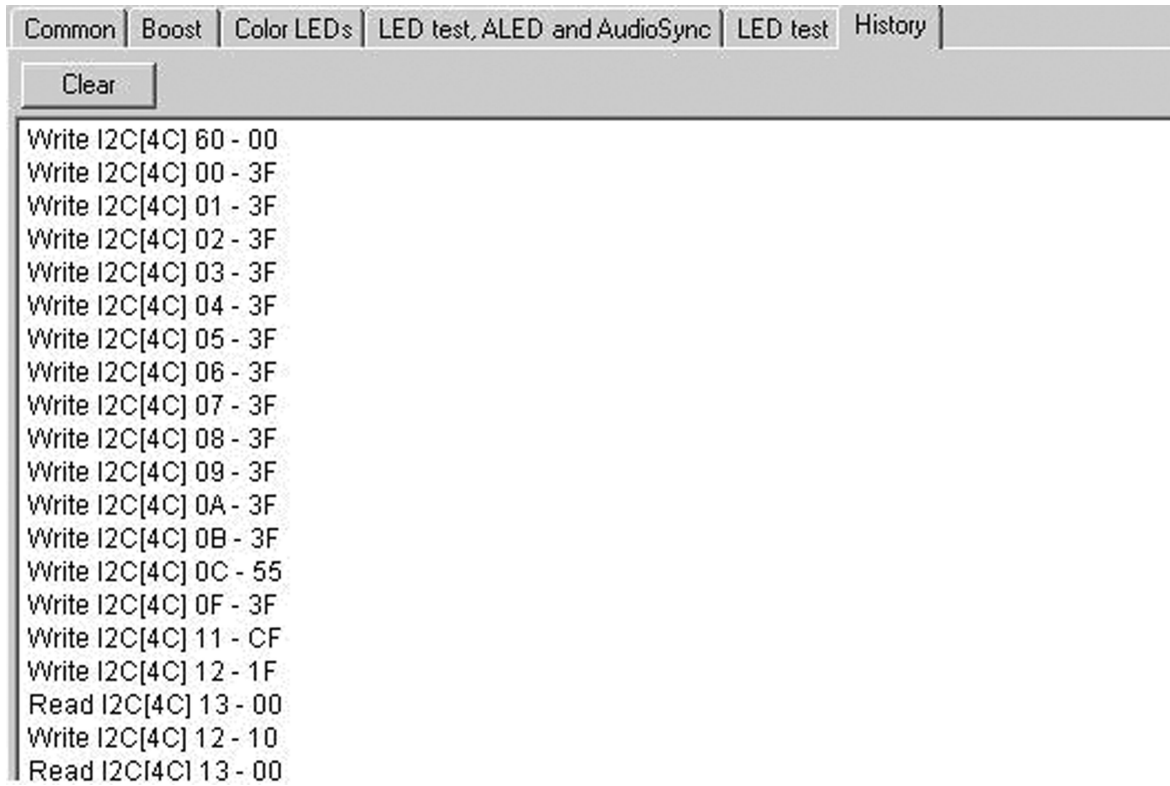
30019505

Figure 7. LED Test Tab

In LED test tab all the LEDs are tested with one press of a button. You can set Boost voltage, RGB 1-4 currents and ALED current. After pressing Start, test program automatically tests all the LEDs and Boost voltage. Results are displayed on a table with ADC code, both in HEX and in DEC, voltages and forward voltages for the LEDs.

After performing the LED test, the device is reset and have to be put to active mode again. Also the boost is disabled. The RGB LEDs PWM value is set to 100%, RGB current values, ALED current and Boost voltage are set as you have chosen.

## HISTORY TAB

**Figure 8. History Tab**

30019506

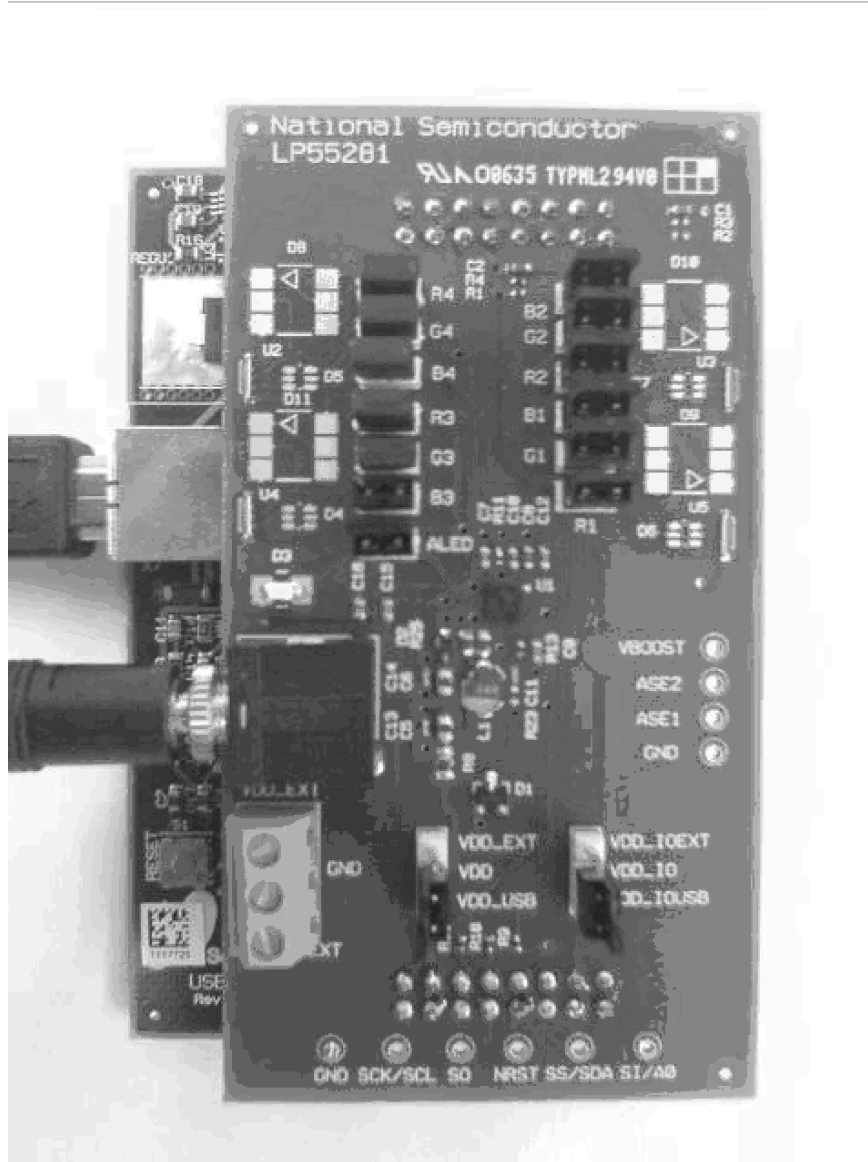
The History Tab records the command sequence of your session. You can copy-paste this information to another application if you wish.



## Evaluation Hardware

The evaluation board has the LP55281 circuit with the necessary external components placed around it. Test points for the circuit pins are on the board edges. LEDs are on the right and left side of the board (there are places for different types of LEDs). The power and audio connector is on the left side of the board. Two PCB connectors make the connection to the USB interface board or some other controller if needed.

The supply voltage  $V_{DD}$ , ground GND and I/O-voltage  $V_{DDIO}$  can be connected to the green power connector. When the USB interface is used, the  $V_{DD}$  and  $V_{DDIO}$  can be either supplied from external power or from the USB board.



**Figure 9. LP55281 Evaluation Board**

30019517

The evaluation board makes possible to use the circuit in normal mode and in 7V tolerant mode. 2.8V LDO on the board provides the  $V_{DD}$  for the circuit in 7V tolerant mode. If 7V is used, the 6.2V protection zener diode on the solder side of the board should be removed.

There are jumpers on the board for connecting  $V_{BOOST}$  to each set of LEDs.

## USB Interface

The USB interface forms the connection between the PC and the evaluation system. It converts the commands from PC to I<sup>2</sup>C or SPI format. It also provides adjustable supply voltage for the evaluation board and makes possible to measure selected voltages and the input current in the evaluation board.

### THE USB INTERFACE FIRMWARE

The USB interface checks for the firmware version of the USB board when the evaluation software is started. If the firmware needs updating, the software prompts you to allow automatic update.

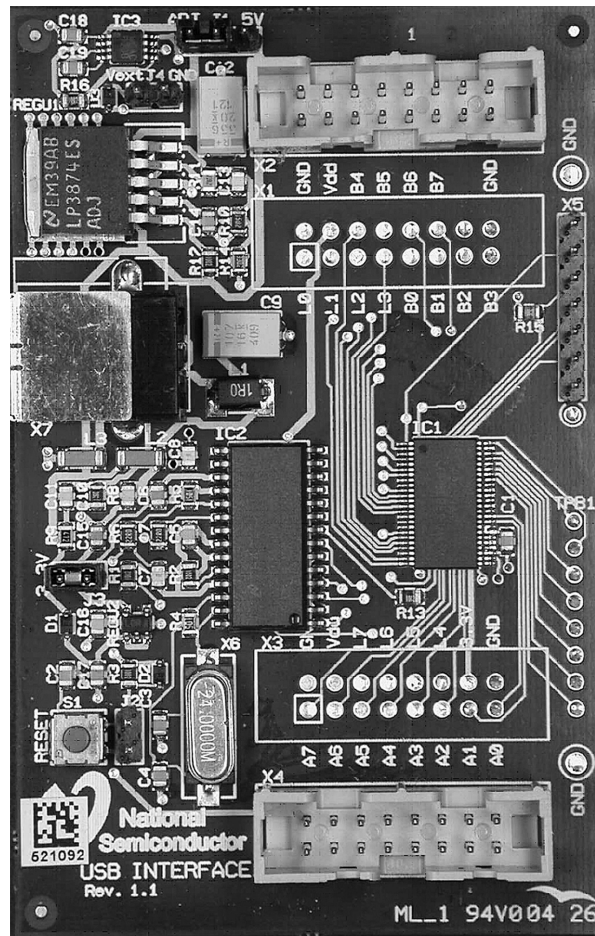


Figure 10. USB Interface Board

30019508

## Getting Started

The following instructions show how to use the LP55281 evaluation kit in default conditions with the USB interface board. Please use the ESD protection (ground cable) to prevent any unwanted damaging ESD events.

1. Check the jumpers and switches on the board.
2. Plug in the evaluation board to the USB board. Connect the USB cable to the evaluation board and to the USB port of your PC. When you plug in the USB board for the first time, your operating system prompts you about "New hardware found" and installs the USB driver. With Win95 and Win98 operating systems you have to accept the installation and click "Next" several times as the installation proceeds.
3. Copy the evaluation software and the support files to your PC's hard disk. Start the software by double-clicking its icon.
4. Press Hardware Reset and USB Setup buttons to reset the chip and the USB interface board.

5. Turn on the chip and the boost converter by enabling stand-by and boost.
6. The Evaluation Kit is now ready to use and the chip can be controlled through the PC-software.

You should disconnect the USB cable from the computer always, when plugging in or removing the evaluation board from the interface board and also when changing the supply jumper settings. Otherwise the USB board may stop responding.

If the USB board is not responding or the software hangs up, press the reset button on the USB board, or disconnect the USB cable for 5 seconds.

If the evaluation software notices that the firmware on the USB board needs to be updated, the software can propose automatic firmware updating. The new firmware will be included in the evaluation kit software.

# Schematics of The Evaluation Board

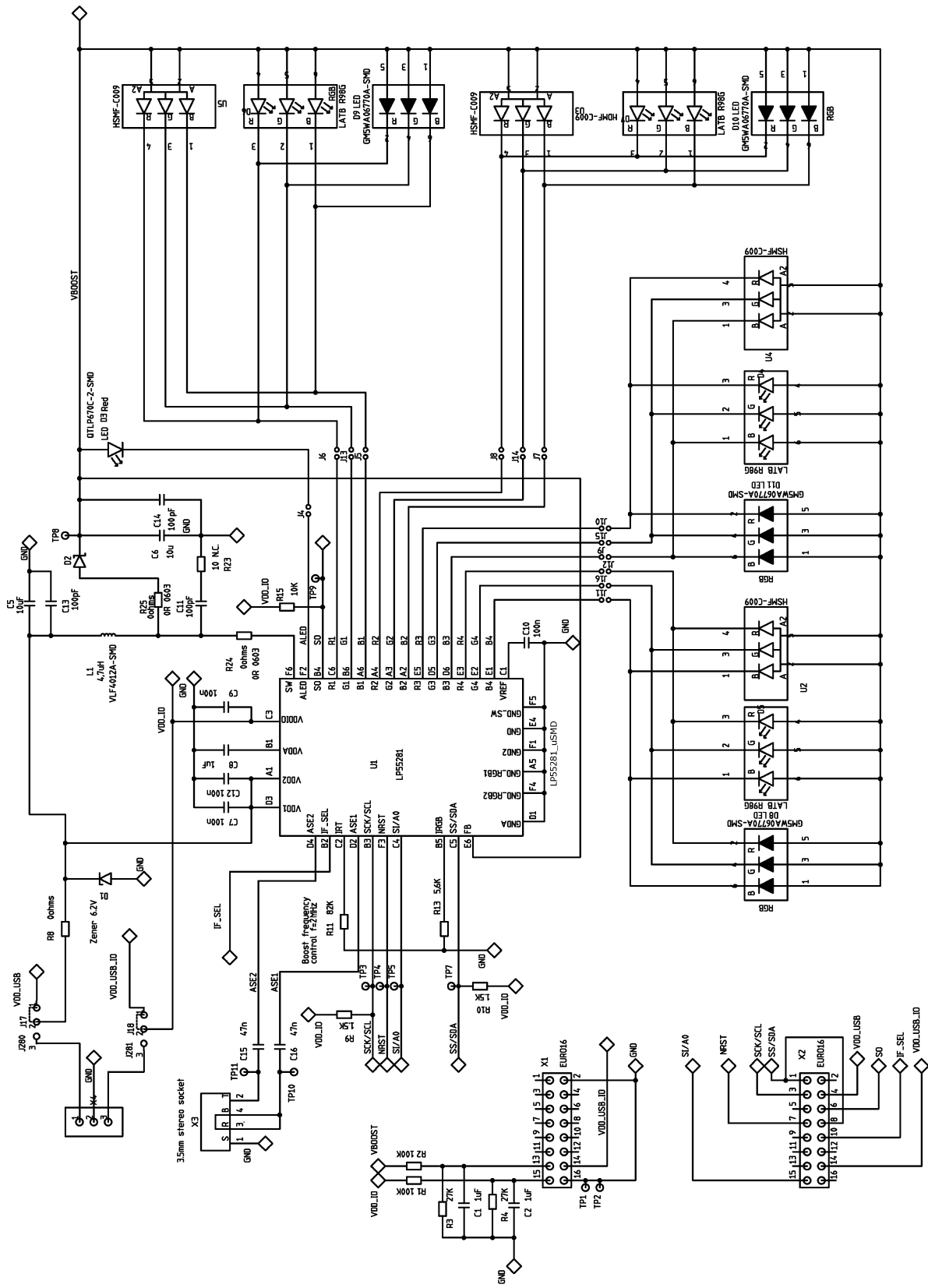


Figure 11. LP55281 Evaluation Board Schematic

30019509

## List of Main Components

Part Number	QTY	Value, Size, Tolerance	Description	Vendor/Type
L1	1	4.7 $\mu$ H	Power Inductor	TDK VLF4012A-SMD
D8-D11	4		RGB 3-Color LEDs	Sharp GM5WA06270A-SMD
D1	1		Zener Diode	BZX84C5V6-ZENER-SOT23
D2	1		Schottky Barrier Diode	Philips BAT760-SOD323
C5, C6	2	10 $\mu$ F, 0805, 10%	10V Capacitor	

## Notes

THE CONTENTS OF THIS DOCUMENT ARE PROVIDED IN CONNECTION WITH NATIONAL SEMICONDUCTOR CORPORATION ("NATIONAL") PRODUCTS. NATIONAL MAKES NO REPRESENTATIONS OR WARRANTIES WITH RESPECT TO THE ACCURACY OR COMPLETENESS OF THE CONTENTS OF THIS PUBLICATION AND RESERVES THE RIGHT TO MAKE CHANGES TO SPECIFICATIONS AND PRODUCT DESCRIPTIONS AT ANY TIME WITHOUT NOTICE. NO LICENSE, WHETHER EXPRESS, IMPLIED, ARISING BY ESTOPPEL OR OTHERWISE, TO ANY INTELLECTUAL PROPERTY RIGHTS IS GRANTED BY THIS DOCUMENT.

TESTING AND OTHER QUALITY CONTROLS ARE USED TO THE EXTENT NATIONAL DEEMS NECESSARY TO SUPPORT NATIONAL'S PRODUCT WARRANTY. EXCEPT WHERE MANDATED BY GOVERNMENT REQUIREMENTS, TESTING OF ALL PARAMETERS OF EACH PRODUCT IS NOT NECESSARILY PERFORMED. NATIONAL ASSUMES NO LIABILITY FOR APPLICATIONS ASSISTANCE OR BUYER PRODUCT DESIGN. BUYERS ARE RESPONSIBLE FOR THEIR PRODUCTS AND APPLICATIONS USING NATIONAL COMPONENTS. PRIOR TO USING OR DISTRIBUTING ANY PRODUCTS THAT INCLUDE NATIONAL COMPONENTS, BUYERS SHOULD PROVIDE ADEQUATE DESIGN, TESTING AND OPERATING SAFEGUARDS.

EXCEPT AS PROVIDED IN NATIONAL'S TERMS AND CONDITIONS OF SALE FOR SUCH PRODUCTS, NATIONAL ASSUMES NO LIABILITY WHATSOEVER, AND NATIONAL DISCLAIMS ANY EXPRESS OR IMPLIED WARRANTY RELATING TO THE SALE AND/OR USE OF NATIONAL PRODUCTS INCLUDING LIABILITY OR WARRANTIES RELATING TO FITNESS FOR A PARTICULAR PURPOSE, MERCHANTABILITY, OR INFRINGEMENT OF ANY PATENT, COPYRIGHT OR OTHER INTELLECTUAL PROPERTY RIGHT.

### LIFE SUPPORT POLICY

**NATIONAL'S PRODUCTS ARE NOT AUTHORIZED FOR USE AS CRITICAL COMPONENTS IN LIFE SUPPORT DEVICES OR SYSTEMS WITHOUT THE EXPRESS PRIOR WRITTEN APPROVAL OF THE CHIEF EXECUTIVE OFFICER AND GENERAL COUNSEL OF NATIONAL SEMICONDUCTOR CORPORATION.** As used herein:

Life support devices or systems are devices which (a) are intended for surgical implant into the body, or (b) support or sustain life and whose failure to perform when properly used in accordance with instructions for use provided in the labeling can be reasonably expected to result in a significant injury to the user. A critical component is any component in a life support device or system whose failure to perform can be reasonably expected to cause the failure of the life support device or system or to affect its safety or effectiveness.

National Semiconductor and the National Semiconductor logo are registered trademarks of National Semiconductor Corporation. All other brand or product names may be trademarks or registered trademarks of their respective holders.

Copyright© 2007 National Semiconductor Corporation

For the most current product information visit us at [www.national.com](http://www.national.com)



**National Semiconductor Americas Customer Support Center**  
 Email: [new.feedback@nsc.com](mailto:new.feedback@nsc.com)  
 Tel: 1-800-272-9959

**National Semiconductor Europe Customer Support Center**  
 Fax: +49 (0) 180-530-85-86  
 Email: [europe.support@nsc.com](mailto:europe.support@nsc.com)  
 Deutsch Tel: +49 (0) 69 9508 6208  
 English Tel: +49 (0) 870 24 0 2171  
 Français Tel: +33 (0) 1 41 91 8790

**National Semiconductor Asia Pacific Customer Support Center**  
 Email: [ap.support@nsc.com](mailto:ap.support@nsc.com)

**National Semiconductor Japan Customer Support Center**  
 Fax: 81-3-5639-7507  
 Email: [jpn.feedback@nsc.com](mailto:jpn.feedback@nsc.com)  
 Tel: 81-3-5639-7560