

LM3405A eMSOP Evaluation Board

National Semiconductor
 Application Note 1899
 Matthew Reynolds
 July 6, 2009

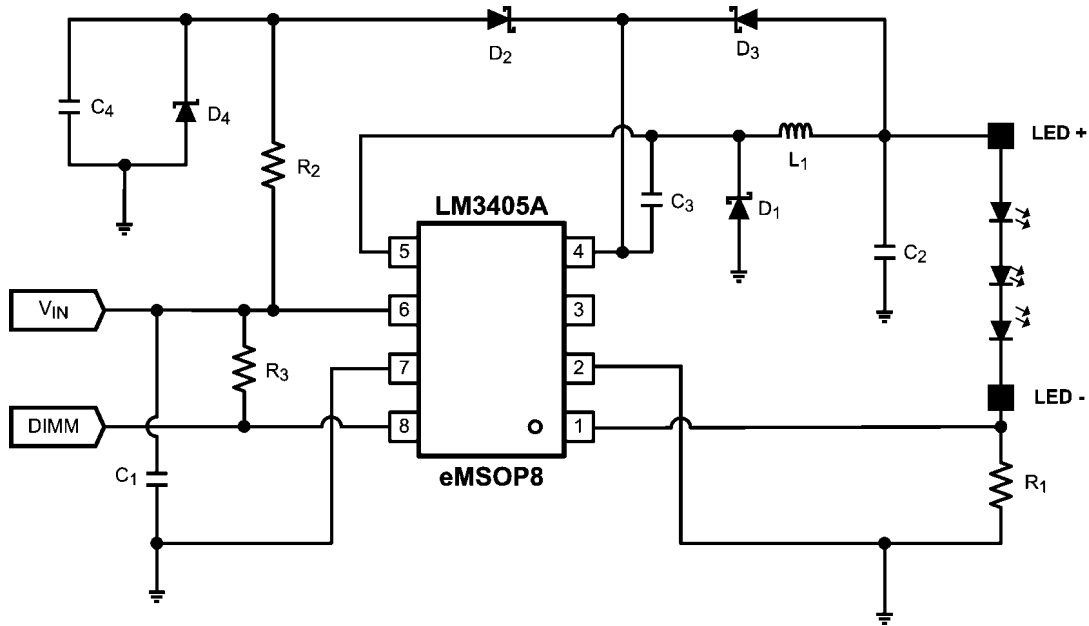


Introduction

The evaluation board included in this shipment converts an input voltage of 5V to 18V, and can illuminate up to four 750 mA LEDs using the LM3405A eMSOP 1.6 MHz LED Driver

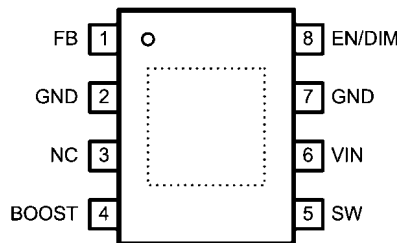
samples. A bill of materials included describes the parts used on this evaluation board. A schematic and layout have also been included with measured performance characteristics of the evaluation board.

LM3405A eMSOP Evaluation Board Schematic



30079101

LM3405A eMSOP Pin-Out

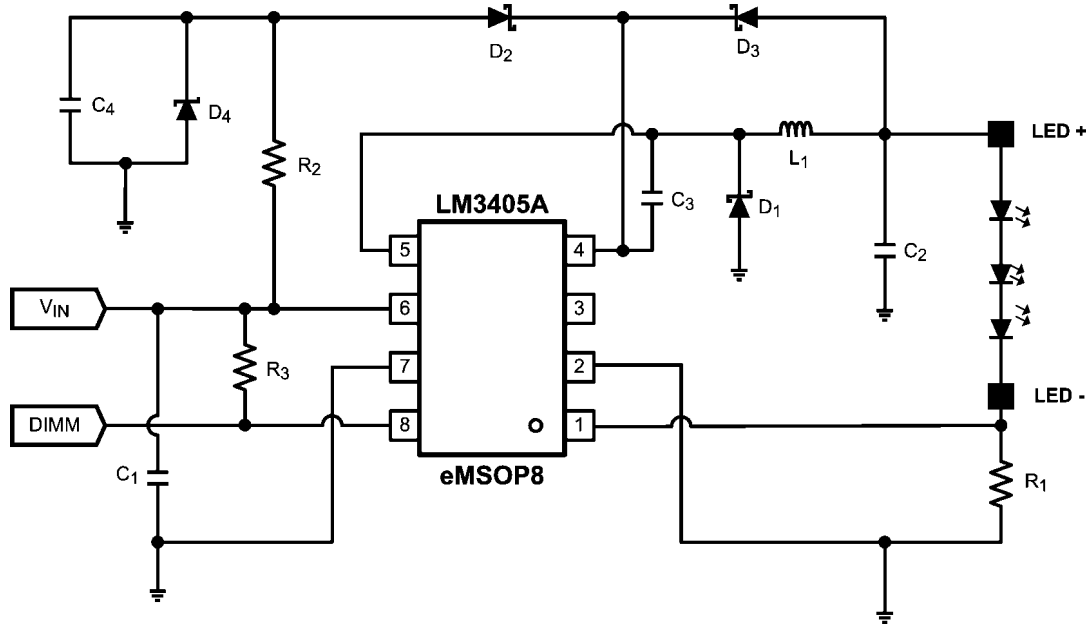


30079102

Four Methods of Deriving V_{BOOST}

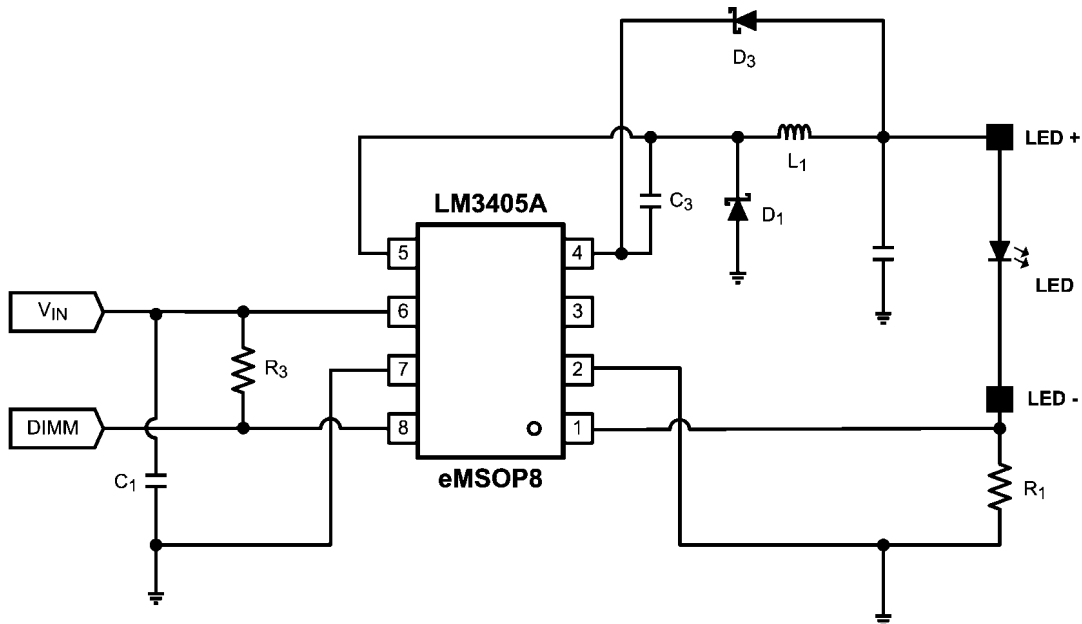
The standard evaluation board derives V_{BOOST} voltage using the "Shunt Zener" configuration (shown on front page). Depending on the specific application, V_{BOOST} voltage can be derived by loading and no-loading external components on the evaluation PCB. The following four schematics show methods to derive V_{BOOST} .

1. V_{BOOST} Derived from Shunt Zener Configuration (see front page schematic) This configuration is recommended for distributed input voltages that have a wide voltage variation. The shunt zener acts as basic voltage regulator for the V_{BOOST} voltage. D4 should have a typical value of 3.6V to 5.1V, $R_2 = (V_{\text{IN}} - V_{\text{zener}})/4 \text{ mA}$, $C_4 = 0.10 \mu\text{F}$.



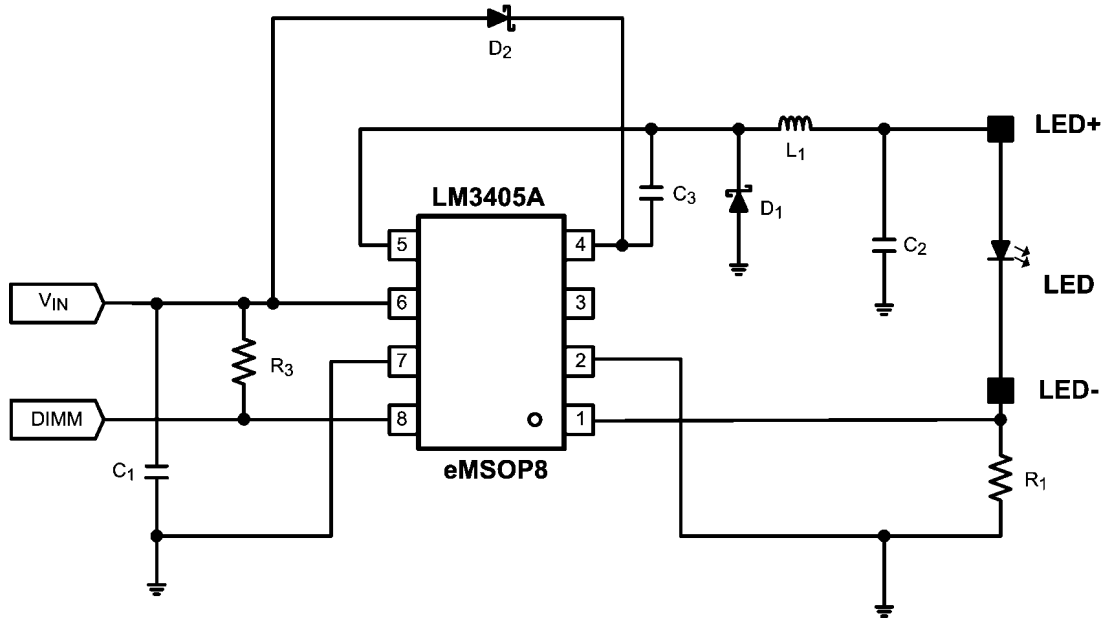
30079101

2. V_{BOOST} Derived from V_{OUT} Use this configuration for output voltages (V_{LED}) that are between 3V - 5.5V.



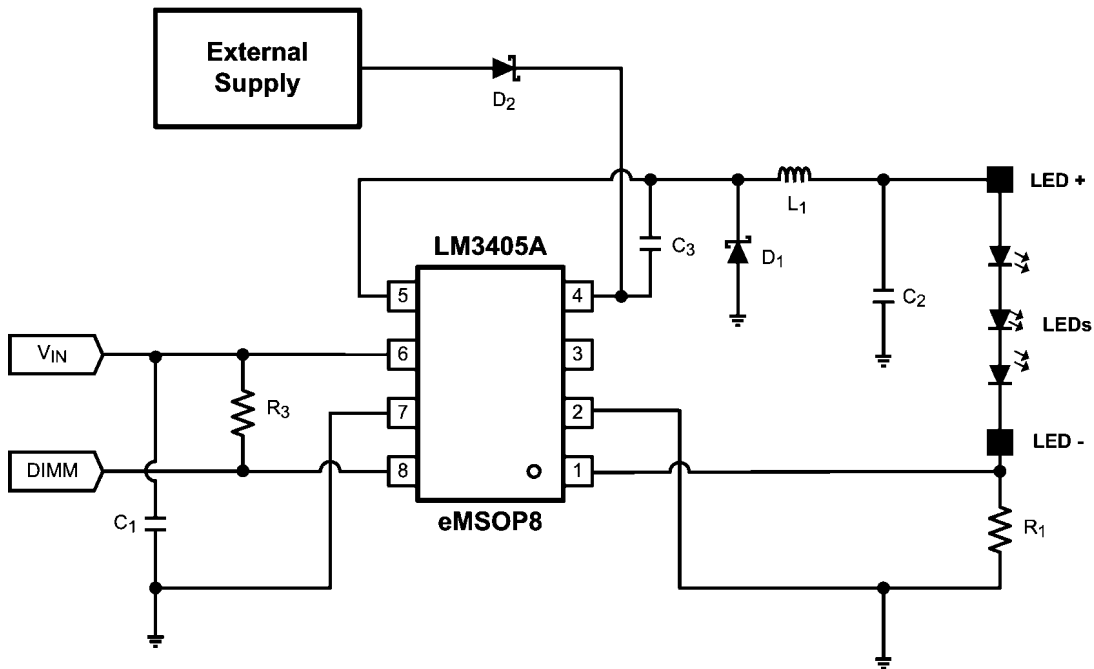
30079105

3. V_{BOOST} Derived from V_{IN} Use this configuration for input voltages that are between 3V - 5.5V.



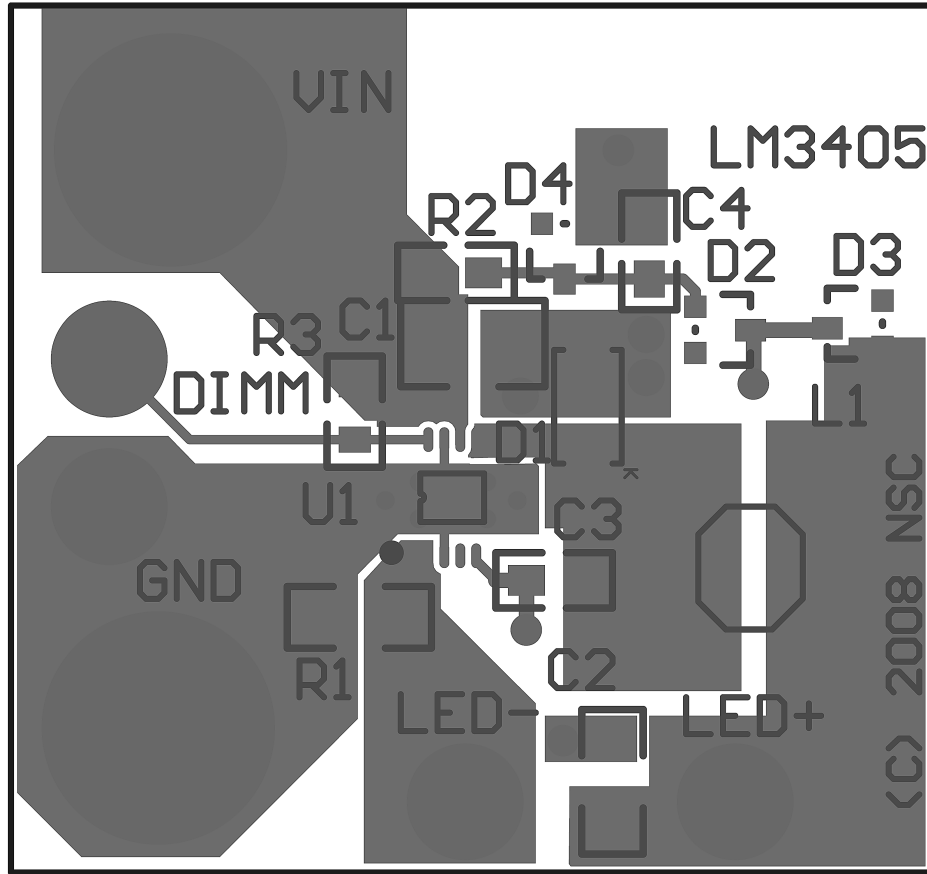
4. V_{BOOST} Derived from External Supply This method of deriving the V_{BOOST} voltage is recommended if the distributed voltage used for point of load regulation is greater than 5V, but there is access to an external voltage between 3V and 5V.

The typical current draw from the external supply would be approximately 2.50 mA.
 $5.5V > V_{EXTERNAL} > 3V$



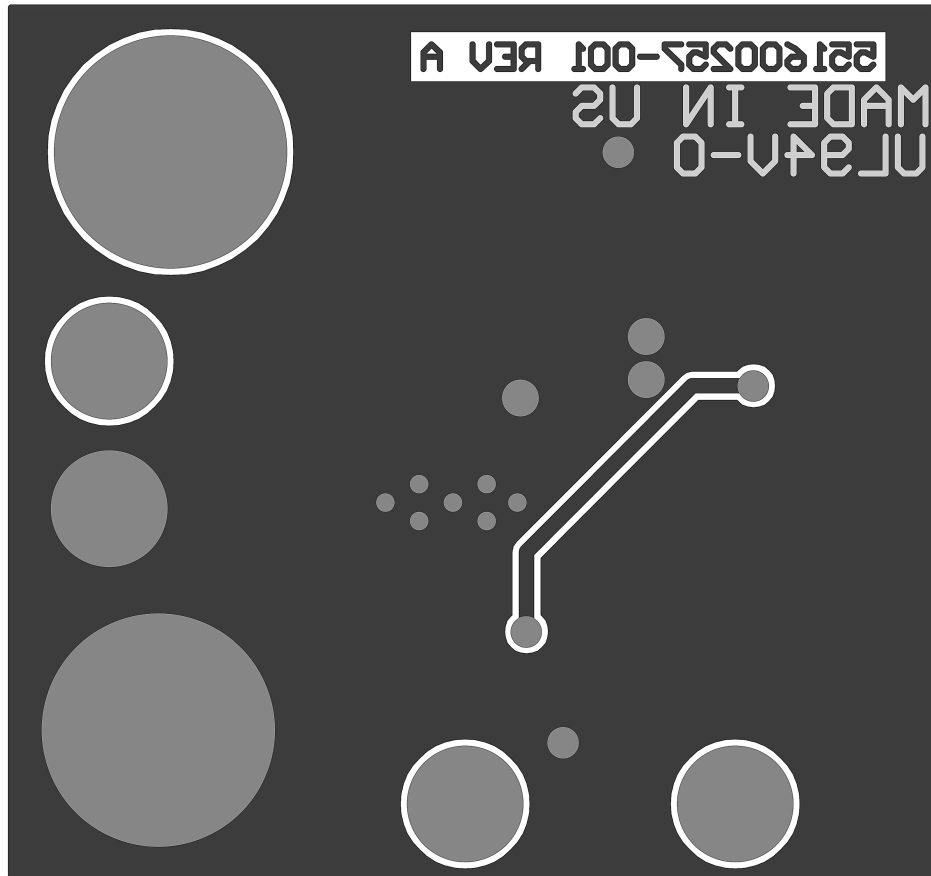
30079107

PCB Top Layer



Layout, Top Layer

30079103



Layout, Bottom Layer

30079108

Bill of Materials

Part ID	Part Value	Manufacturer	Part Number
U1	1A Buck LED Driver eMSOP	NSC	LM3405AXMY
C1, Input Cap	10 μ F, 25V, X5R (1210)	TDK	C3225X5R1E106M
C2, Output Cap	4.7 μ F, 25V, X5R (1206)	TDK	C3216X5R1E475M
C3	2.2 μ F (0805)	TDK	C2012X5R1E225M
C4	1.0 μ F (0805)	TDK	C2012X5R1E105M
D1, Catch Diode	0.3V _f Schottky 1.5A, 30V _R	TOSHIBA	CRS08
D2	SOT23 Schottky	Vishay	BAT54-V
D3	SOT23 Schottky	Vishay	BAT54-V (No Load)
D4	4.3V Zenner SOT23	Vishay	BZX84C4V3-V
L1	4.7 μ H, 1.5A,	CoilCraft	MOS6020-472MLB
R1	267 m Ω (1206)	Vishay	
R2	1 k Ω , 1%	Vishay	CRCW08051001F
R3	10.0 k Ω , 1%	Vishay	CRCW08051002F

Notes

For more National Semiconductor product information and proven design tools, visit the following Web sites at:

Products		Design Support	
Amplifiers	www.national.com/amplifiers	WEBENCH® Tools	www.national.com/webench
Audio	www.national.com/audio	App Notes	www.national.com/appnotes
Clock and Timing	www.national.com/timing	Reference Designs	www.national.com/refdesigns
Data Converters	www.national.com/adc	Samples	www.national.com/samples
Interface	www.national.com/interface	Eval Boards	www.national.com/evalboards
LVDS	www.national.com/lvds	Packaging	www.national.com/packaging
Power Management	www.national.com/power	Green Compliance	www.national.com/quality/green
Switching Regulators	www.national.com/switchers	Distributors	www.national.com/contacts
LDOs	www.national.com/lido	Quality and Reliability	www.national.com/quality
LED Lighting	www.national.com/led	Feedback/Support	www.national.com/feedback
Voltage Reference	www.national.com/vref	Design Made Easy	www.national.com/easy
PowerWise® Solutions	www.national.com/powerwise	Solutions	www.national.com/solutions
Serial Digital Interface (SDI)	www.national.com/sdi	Mil/Aero	www.national.com/milaero
Temperature Sensors	www.national.com/tempensors	SolarMagic™	www.national.com/solarmagic
Wireless (PLL/VCO)	www.national.com/wireless	PowerWise® Design University	www.national.com/training

THE CONTENTS OF THIS DOCUMENT ARE PROVIDED IN CONNECTION WITH NATIONAL SEMICONDUCTOR CORPORATION ("NATIONAL") PRODUCTS. NATIONAL MAKES NO REPRESENTATIONS OR WARRANTIES WITH RESPECT TO THE ACCURACY OR COMPLETENESS OF THE CONTENTS OF THIS PUBLICATION AND RESERVES THE RIGHT TO MAKE CHANGES TO SPECIFICATIONS AND PRODUCT DESCRIPTIONS AT ANY TIME WITHOUT NOTICE. NO LICENSE, WHETHER EXPRESS, IMPLIED, ARISING BY ESTOPPEL OR OTHERWISE, TO ANY INTELLECTUAL PROPERTY RIGHTS IS GRANTED BY THIS DOCUMENT.

TESTING AND OTHER QUALITY CONTROLS ARE USED TO THE EXTENT NATIONAL DEEMS NECESSARY TO SUPPORT NATIONAL'S PRODUCT WARRANTY. EXCEPT WHERE MANDATED BY GOVERNMENT REQUIREMENTS, TESTING OF ALL PARAMETERS OF EACH PRODUCT IS NOT NECESSARILY PERFORMED. NATIONAL ASSUMES NO LIABILITY FOR APPLICATIONS ASSISTANCE OR BUYER PRODUCT DESIGN. BUYERS ARE RESPONSIBLE FOR THEIR PRODUCTS AND APPLICATIONS USING NATIONAL COMPONENTS. PRIOR TO USING OR DISTRIBUTING ANY PRODUCTS THAT INCLUDE NATIONAL COMPONENTS, BUYERS SHOULD PROVIDE ADEQUATE DESIGN, TESTING AND OPERATING SAFEGUARDS.

EXCEPT AS PROVIDED IN NATIONAL'S TERMS AND CONDITIONS OF SALE FOR SUCH PRODUCTS, NATIONAL ASSUMES NO LIABILITY WHATSOEVER, AND NATIONAL DISCLAIMS ANY EXPRESS OR IMPLIED WARRANTY RELATING TO THE SALE AND/OR USE OF NATIONAL PRODUCTS INCLUDING LIABILITY OR WARRANTIES RELATING TO FITNESS FOR A PARTICULAR PURPOSE, MERCHANTABILITY, OR INFRINGEMENT OF ANY PATENT, COPYRIGHT OR OTHER INTELLECTUAL PROPERTY RIGHT.

LIFE SUPPORT POLICY

NATIONAL'S PRODUCTS ARE NOT AUTHORIZED FOR USE AS CRITICAL COMPONENTS IN LIFE SUPPORT DEVICES OR SYSTEMS WITHOUT THE EXPRESS PRIOR WRITTEN APPROVAL OF THE CHIEF EXECUTIVE OFFICER AND GENERAL COUNSEL OF NATIONAL SEMICONDUCTOR CORPORATION. As used herein:

Life support devices or systems are devices which (a) are intended for surgical implant into the body, or (b) support or sustain life and whose failure to perform when properly used in accordance with instructions for use provided in the labeling can be reasonably expected to result in a significant injury to the user. A critical component is any component in a life support device or system whose failure to perform can be reasonably expected to cause the failure of the life support device or system or to affect its safety or effectiveness.

National Semiconductor and the National Semiconductor logo are registered trademarks of National Semiconductor Corporation. All other brand or product names may be trademarks or registered trademarks of their respective holders.

Copyright© 2009 National Semiconductor Corporation

For the most current product information visit us at www.national.com



**National Semiconductor
Americas Technical
Support Center**
Email: support@nsc.com
Tel: 1-800-272-9959

**National Semiconductor Europe
Technical Support Center**
Email: europe.support@nsc.com

**National Semiconductor Asia
Pacific Technical Support Center**
Email: ap.support@nsc.com

**National Semiconductor Japan
Technical Support Center**
Email: jpn.feedback@nsc.com