

LM3402 and LM3404 High Power PSOP-8 Evaluation Board

National Semiconductor
 Application Note 1585
 Chris Richardson
 October 2007



LM3402 and LM3404 High Power PSOP-8 Evaluation Board

Introduction

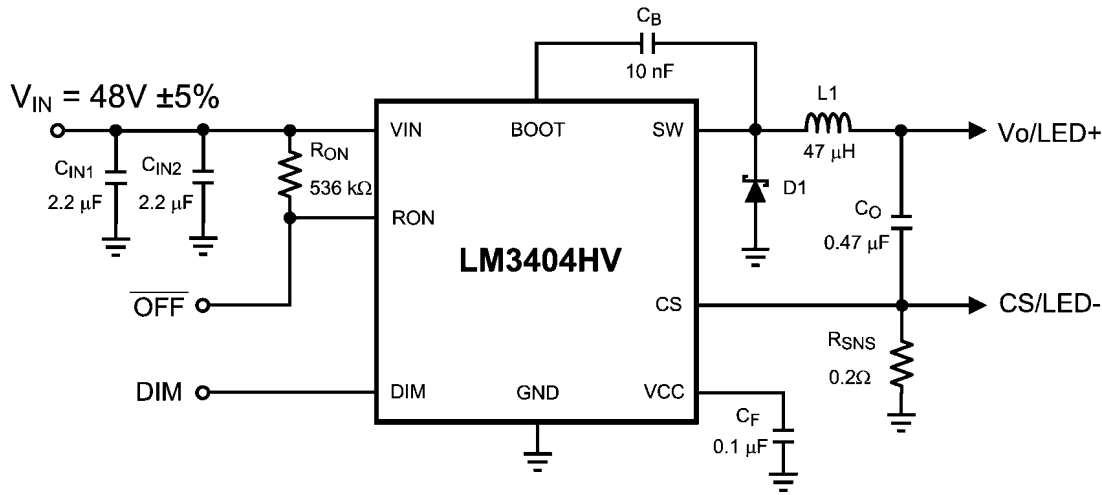
The LM3402/02HV and LM3404/04HV are buck regulator derived controlled current sources designed to drive a series string of high power, high brightness LEDs (HBLEDs) such as the Luxeon™ K2 Emitter at forward currents of up to 0.5A (LM3402/02HV) or 1.0A (LM3404/04HV). This evaluation board demonstrates the enhanced thermal performance of the PSOP-8 package option of any of those four ICs. The LM3404HV was chosen for the example circuit because the combination of high output current, high input voltage, and high duty cycle create the greatest demand for low junction-to-ambient thermal resistance (θ_{JA}). Note that the LM3404/04HV in SO-8 can also be used with this evaluation board, with reduced thermal performance.

LED drivers are often placed in small, closed spaces with no air flow and high ambient temperature due to the dissipation

of the LEDs. When properly soldered the PSOP-8 package offers a θ_{JA} that is as little as one-half that of the standard SO-8 package, and as little as one-third that of the MSOP-8 package.

Circuit Performance with LM3404HV

This evaluation board uses the LM3404HV to provide a constant forward current of $1.0A \pm 10\%$ to a string of ten series-connected HBLEDs with a forward voltage of approximately 3.7V each from an input of $48V \pm 5\%$. The LED ripple current, ΔI_F , will not exceed $80 mA_{P.P.}$, and the switching frequency is $550 kHz \pm 10\%$. The circuit can operate over an extended input voltage range of 40V to 60V, however output current may exceed the $\pm 10\%$ specification.

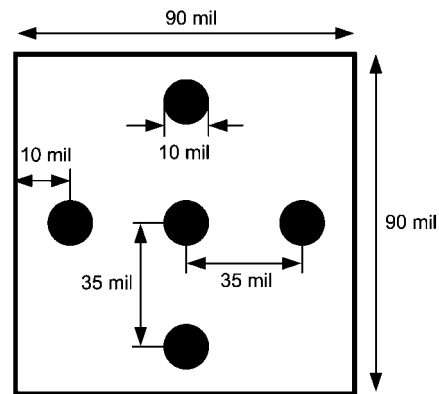


30009220

FIGURE 1. Standard Schematic

Thermal Performance

The PSOP-8 package is pin-for-pin compatible with the SO-8 package with the exception of the thermal pad, or exposed die attach paddle (DAP). The DAP is electrically connected to system ground. When the DAP is properly soldered to an area of copper on the top layer, bottom layer, internal planes, or combinations of various layers, the θ_{JA} of the LM3404/04HV can be significantly lower than that of the SO-8 package or MSOP-8 package in the case of the LM3402/02HV. The PSOP-8 evaluation board is two layers of 1oz copper each, and measures 1.25" by 1.95". The DAP is soldered to approximately one square inch of top and two square inches of bottom layer copper. Five thermal vias connect the DAP to the bottom layer of the PCB, and the recommended DAP/via layout is shown in Figure 2.



30009221

FIGURE 2. Thermal Pad and Via Layout

AN-1585

Calibrated testing was performed on the PSOP-8 evaluation board to compare the performance of the PSOP-8 with the DAP soldered and the standard SO-8 package. The example circuit dissipation is approximately 1.1W. (see the LM3404/04HV datasheet for detailed thermal calculations.) For dissipation ranging from 0.5W to 1.5W the θ_{JA} of the PSOP-8 package is 50°C/W ±10%. The θ_{JA} of the SO-8 package is 100°C/W ±10%.

Connecting to LED Array

The LM3404/04HV Evaluation Board includes a female 6-pin SIP, **J1**, connector as well as two standard 94mil turret connectors for the cathode and anode connections of the LED array. *Figure 3* shows the pinout of **J1**. Solid 18 or 20 gauge wire with about 1 cm of insulation stripped away makes a convenient, solderless connection to **J1**.

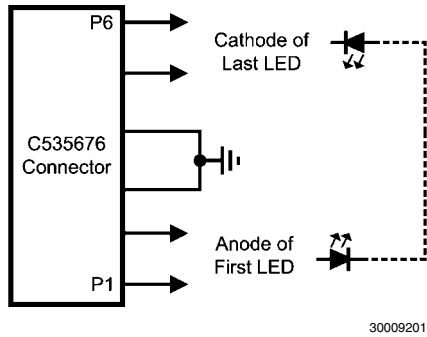


FIGURE 3. LED Connector

Setting the LED Current

The default forward current I_F delivered to the LED array is 1.0A, typical of many 3W LEDs. To adjust this value the current setting resistor R_{SNS} can be changed according to the following equation:

$$R_{SNS} = \frac{0.2 \times L}{I_F \times L + V_O \times t_{SNS} - \frac{V_{IN} - V_O}{2} \times t_{ON}}$$

$$t_{SNS} = 220 \text{ ns}$$

This resistor should be rated to handle the power dissipation of the LED current. For this example, the closest 5% tolerance resistor to set an LED current of 1.0A is 0.2 Ω. In steady state this resistor will dissipate (1.0 x 0.2) = 200 mW, indicating that a resistor with a 1/4W power rating is appropriate.

PWM Dimming

The **DIM** terminal on the PCB provides an input for a pulse width modulation signal for dimming of the LED array. In order to fully enable and disable the LM3404/04HV the PWM signal should have a maximum logic low level of 0.8V and a minimum logic high level of 2.2V. The maximum PWM dimming frequency, minimum PWM duty cycle and maximum duty cycle are illustrated in *Figure 4*. PWM frequency should be at least one order of magnitude below the LM3404/04HV switching frequency. The interval t_D represents the delay from a logic high at the DIM pin to the onset of the output current. The quantities t_{SU} and t_{SD} represent the time needed for the output current to slew up to steady state and slew down to zero, respectively. Typical response time is shown in the Typical Performance Characteristics section.

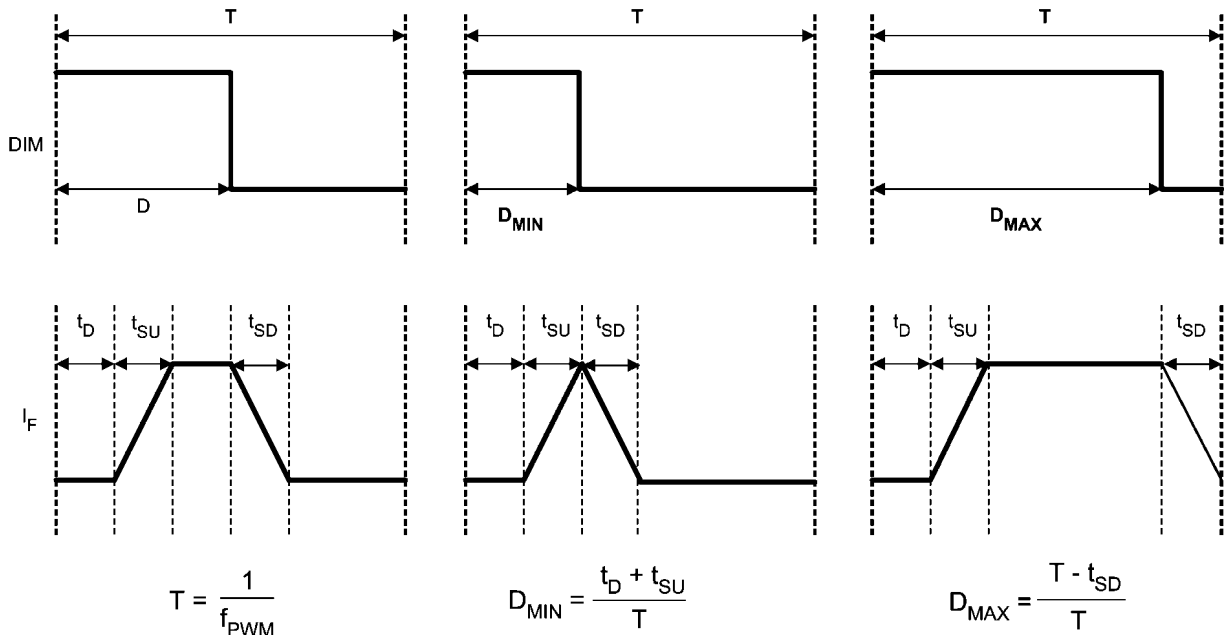


FIGURE 4. PWM Dimming Limits

The logic of **DIM** is direct, hence the LM3404HV will deliver regulated output current when the voltage at **DIM** is high, and the current output is disabled when the voltage at **DIM** is low. Connecting a constant logic low will disable the output, and the LM3404/04HV is enabled if the DIM pin is open-circuited. The **DIM** function disables only the power MOSFET, leaving all other circuit blocks functioning to minimize the converter response time.

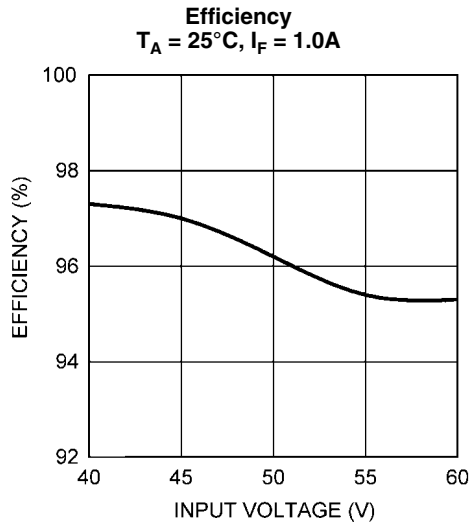
Low Power Shutdown

The LM3404HV can be placed into a low power shutdown (I_Q typically 90 μ A) by grounding the **OFF*** terminal. During normal operation this terminal should be left open-circuit.

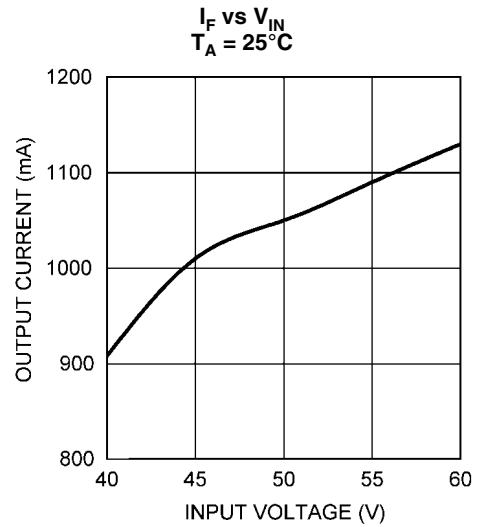
TABLE 1. Bill of Materials

ID	Part Number	Type	Size	Parameters	Qty	Vendor
U1	LM3404HV	LED Driver	PSOP-8	75V, 1.0A	1	NSC
L1	SLF10145T- 470M1R4	Inductor	10.1 x 10.1 x 4.5mm	47 μ H, 1.4A, 0.1 Ω	1	TDK
D1	CMSH2-60M	Schottky Diode	SMA	60V, 2A	1	Central Semi
Cf	VJ0603Y104KXXAT	Capacitor	0603	100nF 10%	1	Vishay
Cb	VJ0603Y103KXXAT	Capacitor	0603	10nF 10%	1	Vishay
Cin1, Cin2	C4532X7R2A225M	Capacitor	1812	2.2 μ F, 100V	2	TDK
Co	C3216X7R2A474M	Capacitor	1206	0.47 μ F, 100V	1	TDK
Rsns	ERJ8BQFR20V	Resistor	1206	0.2 Ω 1%	1	Panasonic
Ron	CRCW06035363F	Resistor	0603	536k Ω 1%	1	Vishay
DIM1, OFF*	160-1512	Terminal	0.062"		2	Cambion
GND, VIN, Vo/ LED+, CS/LED-	160-1026	Terminal	0.094"		5	Cambion
J1	535676-5	Connector	Custom	6 Pins	1	Tyco/AMP

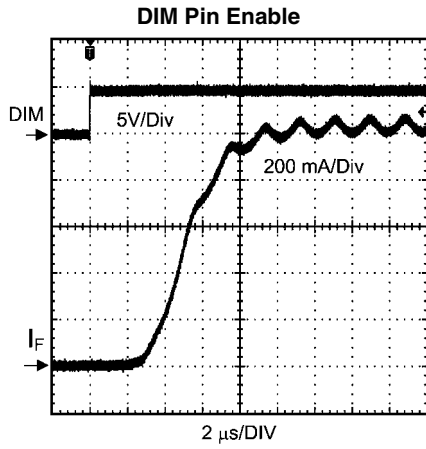
Typical Performance Characteristics



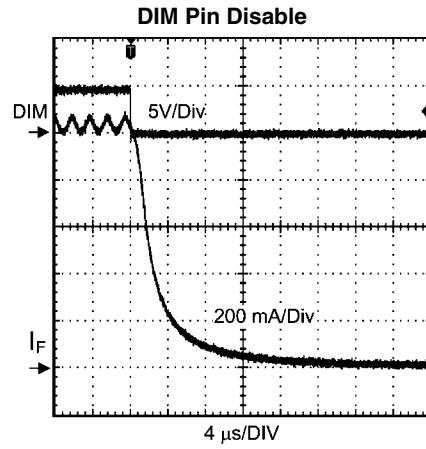
30009208



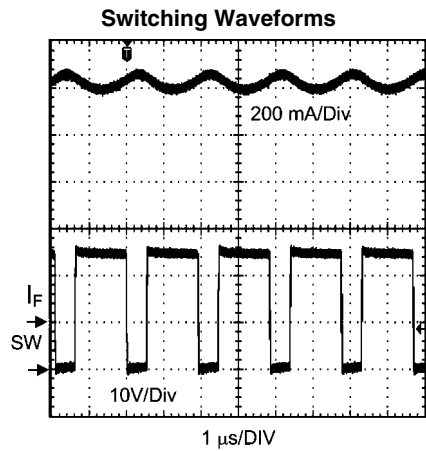
30009209



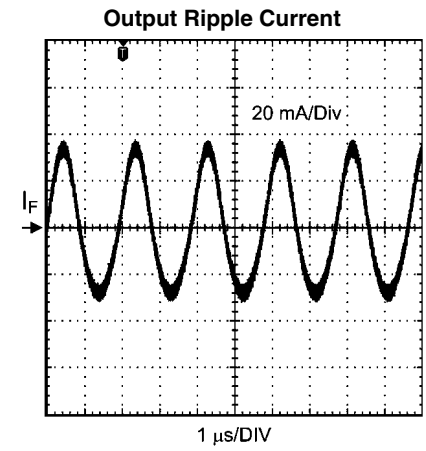
30009210



30009211

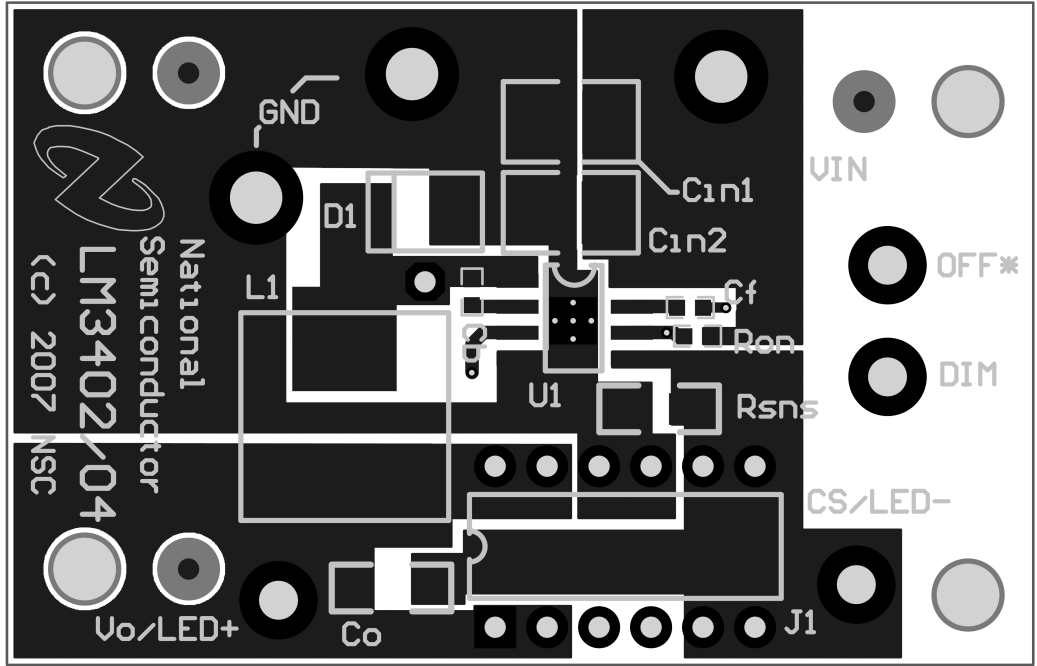


30009212



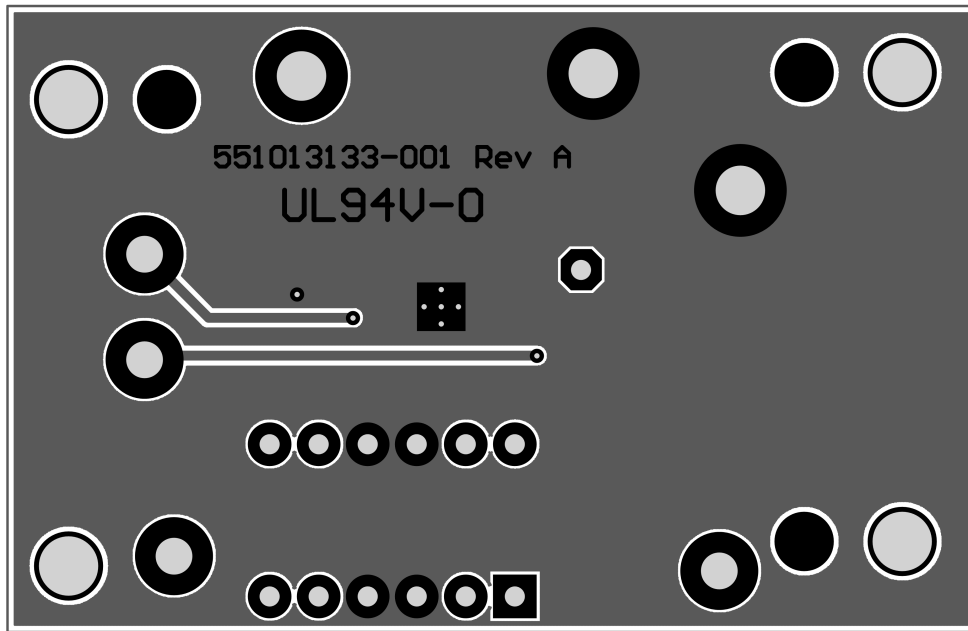
30009213

Layout



Top Layer and Top Overlay

30009206



Bottom Layer and Bottom Overlay

30009207

Notes

THE CONTENTS OF THIS DOCUMENT ARE PROVIDED IN CONNECTION WITH NATIONAL SEMICONDUCTOR CORPORATION ("NATIONAL") PRODUCTS. NATIONAL MAKES NO REPRESENTATIONS OR WARRANTIES WITH RESPECT TO THE ACCURACY OR COMPLETENESS OF THE CONTENTS OF THIS PUBLICATION AND RESERVES THE RIGHT TO MAKE CHANGES TO SPECIFICATIONS AND PRODUCT DESCRIPTIONS AT ANY TIME WITHOUT NOTICE. NO LICENSE, WHETHER EXPRESS, IMPLIED, ARISING BY ESTOPPEL OR OTHERWISE, TO ANY INTELLECTUAL PROPERTY RIGHTS IS GRANTED BY THIS DOCUMENT.

TESTING AND OTHER QUALITY CONTROLS ARE USED TO THE EXTENT NATIONAL DEEMS NECESSARY TO SUPPORT NATIONAL'S PRODUCT WARRANTY. EXCEPT WHERE MANDATED BY GOVERNMENT REQUIREMENTS, TESTING OF ALL PARAMETERS OF EACH PRODUCT IS NOT NECESSARILY PERFORMED. NATIONAL ASSUMES NO LIABILITY FOR APPLICATIONS ASSISTANCE OR BUYER PRODUCT DESIGN. BUYERS ARE RESPONSIBLE FOR THEIR PRODUCTS AND APPLICATIONS USING NATIONAL COMPONENTS. PRIOR TO USING OR DISTRIBUTING ANY PRODUCTS THAT INCLUDE NATIONAL COMPONENTS, BUYERS SHOULD PROVIDE ADEQUATE DESIGN, TESTING AND OPERATING SAFEGUARDS.

EXCEPT AS PROVIDED IN NATIONAL'S TERMS AND CONDITIONS OF SALE FOR SUCH PRODUCTS, NATIONAL ASSUMES NO LIABILITY WHATSOEVER, AND NATIONAL DISCLAIMS ANY EXPRESS OR IMPLIED WARRANTY RELATING TO THE SALE AND/OR USE OF NATIONAL PRODUCTS INCLUDING LIABILITY OR WARRANTIES RELATING TO FITNESS FOR A PARTICULAR PURPOSE, MERCHANTABILITY, OR INFRINGEMENT OF ANY PATENT, COPYRIGHT OR OTHER INTELLECTUAL PROPERTY RIGHT.

LIFE SUPPORT POLICY

NATIONAL'S PRODUCTS ARE NOT AUTHORIZED FOR USE AS CRITICAL COMPONENTS IN LIFE SUPPORT DEVICES OR SYSTEMS WITHOUT THE EXPRESS PRIOR WRITTEN APPROVAL OF THE CHIEF EXECUTIVE OFFICER AND GENERAL COUNSEL OF NATIONAL SEMICONDUCTOR CORPORATION. As used herein:

Life support devices or systems are devices which (a) are intended for surgical implant into the body, or (b) support or sustain life and whose failure to perform when properly used in accordance with instructions for use provided in the labeling can be reasonably expected to result in a significant injury to the user. A critical component is any component in a life support device or system whose failure to perform can be reasonably expected to cause the failure of the life support device or system or to affect its safety or effectiveness.

National Semiconductor and the National Semiconductor logo are registered trademarks of National Semiconductor Corporation. All other brand or product names may be trademarks or registered trademarks of their respective holders.

Copyright© 2007 National Semiconductor Corporation

For the most current product information visit us at www.national.com



**National Semiconductor
Americas Customer
Support Center**
Email:
new.feedback@nsc.com
Tel: 1-800-272-9959

**National Semiconductor Europe
Customer Support Center**
Fax: +49 (0) 180-530-85-86
Email: europe.support@nsc.com
Deutsch Tel: +49 (0) 69 9508 6208
English Tel: +49 (0) 870 24 0 2171
Français Tel: +33 (0) 1 41 91 8790

**National Semiconductor Asia
Pacific Customer Support Center**
Email: ap.support@nsc.com

**National Semiconductor Japan
Customer Support Center**
Fax: 81-3-5639-7507
Email: jpn.feedback@nsc.com
Tel: 81-3-5639-7560