



Test Procedure for the NCP 3066 Boost SOIC Evaluation Board

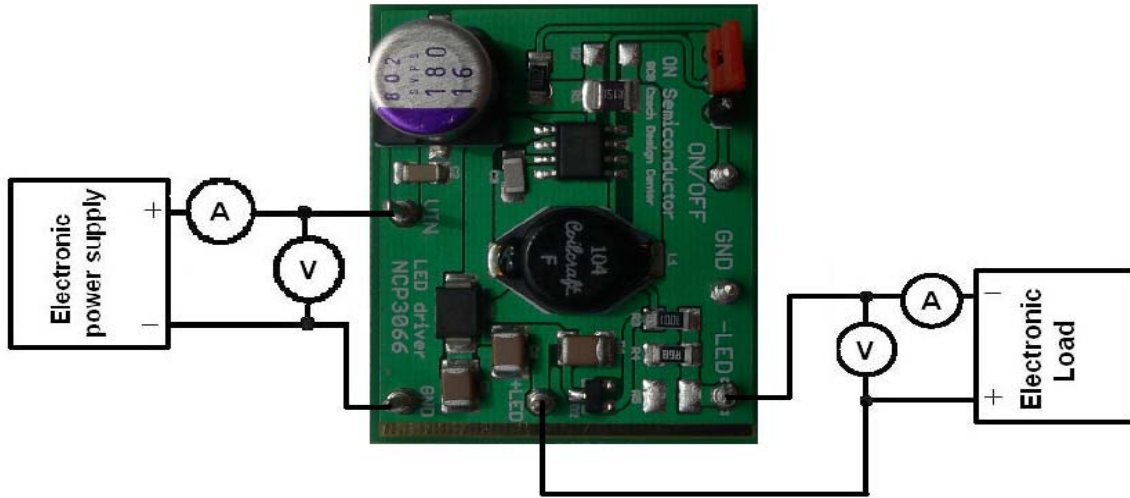


Figure 1: Test procedure:

Voltage Supply (12 V, 3 A)	Voltage Meter	Electronic Load or Current Source
----------------------------	---------------	-----------------------------------

Test Procedure:

1. Connect the test setup as shown in Figure 1.
2. Apply $V_{out} = 16V$. (5 HB white LEDs string).
3. Apply an input voltage $V_{cc} = 12V$.
4. Check that I_{out} is 350 mA.
5. Power down the V_{cc} .
6. Power down the load.
7. End of test.