



## Test Procedure for the NCP3066 3A BUCK Evaluation Board

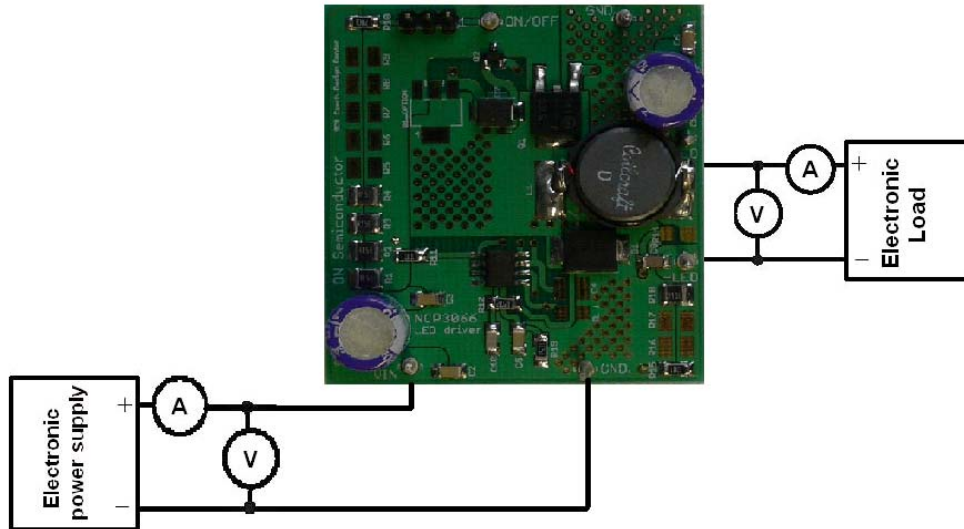


Figure 1: Test Configuration

Voltage Supply (12 V, 3 A)	Voltage Meter	Electronic Load or Current Source
----------------------------	---------------	-----------------------------------

### Test Procedure:

1. Connect the test setup as shown in Figure 1.
2. Apply  $V_{out} = 3.2\text{ V}$  in voltage mode at the electronic load (1 HB white LED).
3. Apply the input voltage  $V_{cc} = 12$ .
4. Check that  $I_{out}$  is 1050 mA.
5. Power down  $V_{cc}$ .
6. Power down the load.
7. End of test.