

# Test Procedure for the NCP3065 Boost Evaluation Board

ON Semiconductor



7/9/2007

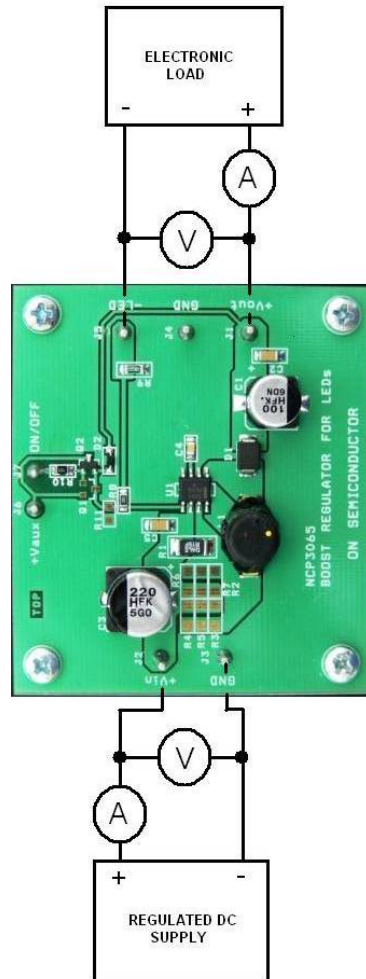


Figure 1: Test Setup

## Required Equipment:

- dc Voltage supply, up to 35V, 3A
- Voltage meter
- Current meter
- Electronic load

## Test Procedure:

1. Connect the test setup as shown in Figure 1.
2. Apply  $V_{OUT} = 20\text{ V}$  load.
3. Apply an input voltage,  $V_{CC} = 12\text{ V}$ .
4. Check that  $I_{OUT}$  is 350mA
5. Power down the  $V_{CC}$ .
6. Power down the load.
7. End of test