

November 1999

DK86060-3

Version 3.1

16-Bit Interpolating DAC Development Kit

FME/MS/SFDAC1/FL_2/4259

Features

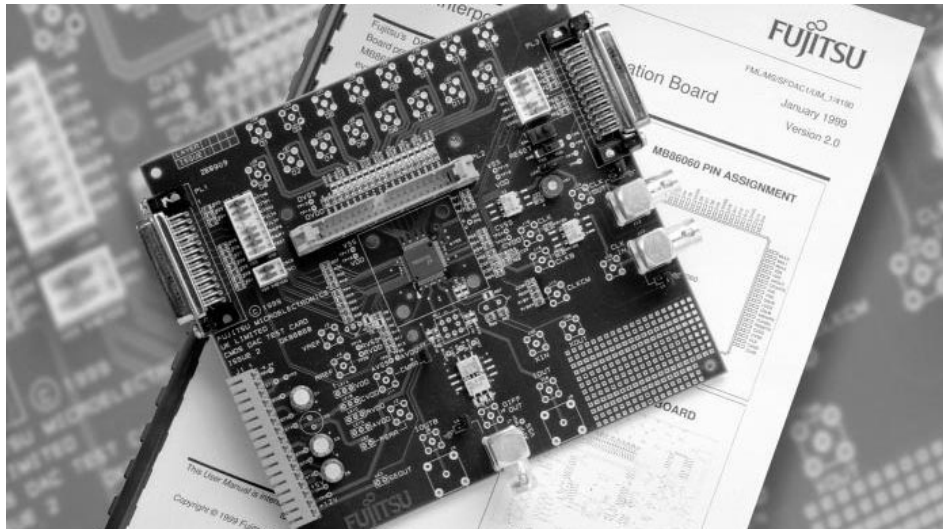
- MB86060 ready mounted on the PCB
- Spare MB86060 for customer development
- 16-bit data input via a 40way IDC header or optional SMA/SMB connectors
- Transformer-coupled differential output via BNC and optional SMA/SMB connectors
- Transformer-coupled RF clock input via BNC and optional SMA/SMB connectors
- Transformer-coupled clock output via BNC and optional SMA/SMB connectors
- Internal oscillator with on-board crystal
- Four layer gold plated PCB
- Matrix prototype area included on-board
- Remote control via 25way D type connectors
- Comprehensive user manual

Description

Fujitsu's DK86060-3 16-bit Interpolating DAC Development Kit provides a simple and effective means of evaluating the MB86060. This enables faster device evaluation without incurring the time and cost penalties of in-house PCB design and manufacture.

The board provides a complete evaluation environment for the DAC. A transformer-coupled differential analog output interface is provided to simplify integration into target applications and development environments. The clock is sourced from a transformer coupled RF source, and 16-bit data is input via a 40way IDC header. Various other connector and output configurations are available for fitment by the user.

DK86060-3 Evaluation Board





DK86060-3 16-Bit Interpolating DAC Development Kit

Development Kit

The DK86060-3 Development Kit contains an evaluation board, power supply connector, user manual and one spare sample MB86060 device.

The evaluation board requires one low voltage DC power supply capable of providing 500mA, an RF clock source, and a 16-bit digital waveform generator. The board is configured via on-board switches and jumper links, or can be controlled remotely.

The user manual guides the user step-by-step through configuring the board, connecting the test equipment, and evaluating the DAC's performance. Detailed schematics, PCB overlay's and connector pin-outs are all included to assist the user in the operation of the evaluation board.

Ordering Information

Part	Order Number
MB86060 Development Kit	DK86060-3
MB86060 DAC	MB86060PFV
DK86060-3 User Manual	Contact Sales
MB86060 Datasheet	Contact Sales

Worldwide Headquarters

Japan

Fujitsu Limited

Tel: +81 44 754 3753
Fax: +81 44 754 3329

1015 Kamikodanaka 4-1-1
Nakahara-ku
Kawasaki-shi
Kanagawa-ken 211-88
Japan

<http://www.fujitsu.co.jp/>

Asia

Fujitsu Microelectronics Asia
Pte Limited

Tel: +65 281 0770
Fax: +65 281 0220

151 Lorong Chuan
#05-08 New Tech Park
Singapore 556741

<http://www.fmap.com.sg/>

USA

Fujitsu Microelectronics Inc

Tel: +1 408 737 5600
Fax: +1 408 737 5999

1250 East Arques Avenue
Sunnyvale CA 94088-3470
USA

<http://www.fma.fujitsu.com/>

Europe

Fujitsu Microelectronics Europe
GmbH

Tel: +49 6103 6900
Fax: +49 6103 690122

Am Siebenstein 6-10
D-63303 Dreieich-Buchsschlag
Germany

<http://www.fujitsu-fme.com/>

FME/MS/SFDAC1/FL_2/4259 - 3.1
