

# LM3489 Demonstration Board

National Semiconductor  
Application Note 1471  
TK Man  
May 2006



## Introduction

The LM3489 is a high efficiency PFET switching regulator controller that can be used to quickly and easily develop a small, cost effective, switching buck regulator for a wide range of applications. The hysteretic control architecture provides for simple design without any control loop stability concerns using a wide variety of external components. The PFET architecture also allows for low component count as well as ultra-low dropout, and 100% duty cycle operation. Another benefit is high efficiency operation at light loads without an increase in output ripple. A dedicated Enable Pin (Enabled if left unconnected) provides a shutdown mode drawing only 7  $\mu$ A.

Current limit protection can be implemented by measuring the voltage across the PFET's  $R_{DS(ON)}$ , thus eliminating the need for a sense resistor. The cycle-by-cycle current limit can be adjusted with a single resistor, ensuring safe operation over a range of output currents.

This LM3489 demonstration board provides a 3.3V output with 500 mA nominal load capability (max. 1A) from a wide input voltage range of 7V to 28V. The reference design is optimized for overall conversion efficiency. This application note contains the demo board schematic, PCB layout, Bill of Materials and typical operating waveforms are provided for reference.

## Evaluation Board Schematic

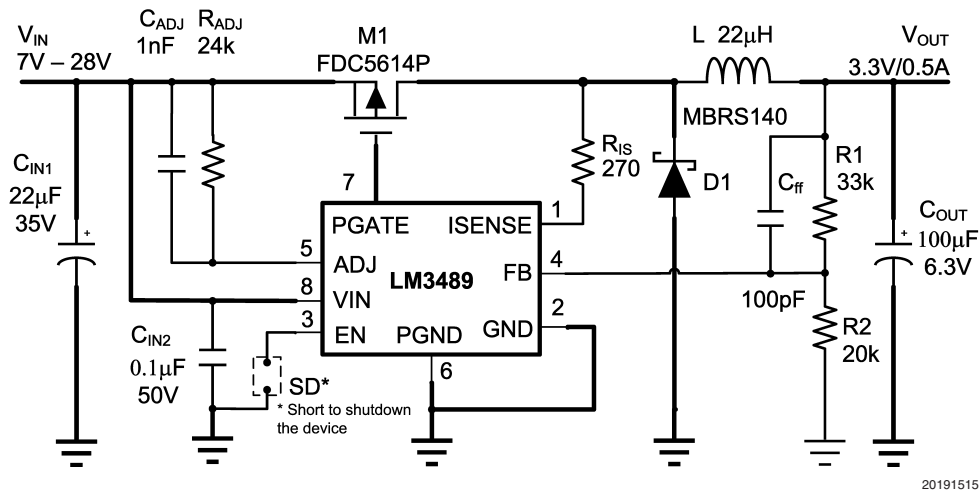


FIGURE 1. LM3489 Evaluation Board Schematic

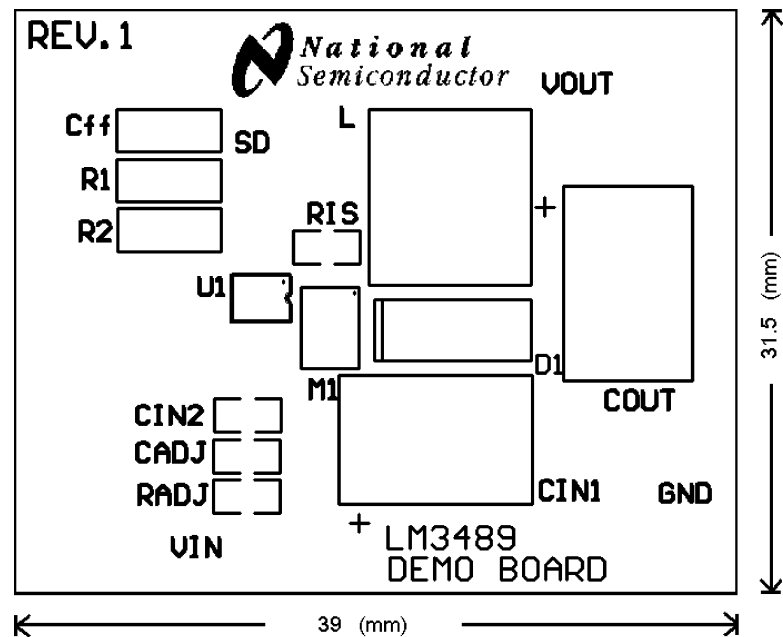
## Bill of Materials

Label	Description	Manufacturer
CIN1	Tantalum Capacitor 22 $\mu$ F 35V EEJL1VD226R	Panasonic
	Tantalum Capacitor 22 $\mu$ F 35V 293D226X0035E	Vishay
CIN2	0603 Ceramic Chip Capacitor 0.1 $\mu$ F 50V ECJ1VB1H104K	Panasonic
COUT	Low ESR Capacitor, POSCAP 100 $\mu$ F 6.3V 6TPC100M	Sanyo
CADJ	0603 Ceramic Chip 1nF 50V ECJ1VB1H102K	Panasonic
	0603 Ceramic Chip 1nF 50V VJ0805A102KXAA	Vishay
Cff	0805 Ceramic Chip 100pF 50V ECJ1VC1H101J	Panasonic
	0805 Ceramic Chip 100pF 50V VJ0805A101KXAA	Vishay
D1	Schottky Diode 1A 40V MBR140T3	ON Semiconductor
	Schottky Diode 1A 40V CSMH1-40	Central Semi
L	Inductor 22 $\mu$ H LQH66SN220M03L	Murata
M1	P-channel MOSFET 60V FDC5614P	Fairchild
R1	0805 Chip Resistor 33k $\Omega$ CRCW08053302F	Vishay

## Bill of Materials (Continued)

Label	Description	Manufacturer
	0805 Chip Resistor 33k $\Omega$ ERJ3GEYF333	Panasonic
R2	0805 Chip Resistor 20k $\Omega$ CRCW08052002F	Vishay
	0805 Chip Resistor 20k $\Omega$ ERJ3GEYF203	Panasonic
RADJ	0603 Chip Resistor 24k $\Omega$ CRCW08052402F	Vishay
	0603 Chip Resistor 24k $\Omega$ ERJ3GEYF243	Panasonic
RIS	0603 Chip Resistor 270 $\Omega$ CRCW08052700F	Vishay
	0603 Chip Resistor 270 $\Omega$ ERJ3GEYF271	Panasonic
U1	Buck Controller With ENABLE PIN LM3489MM	National Semiconductor

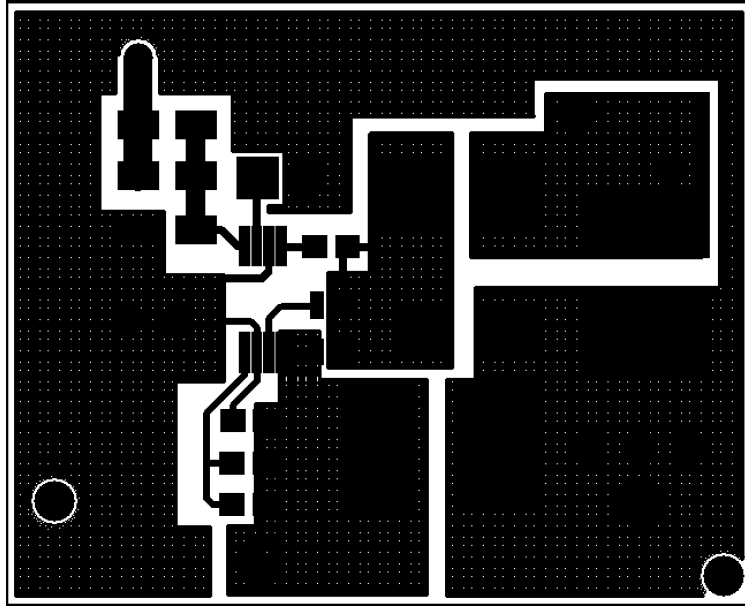
## Demonstration Board PCB Layout



20191502

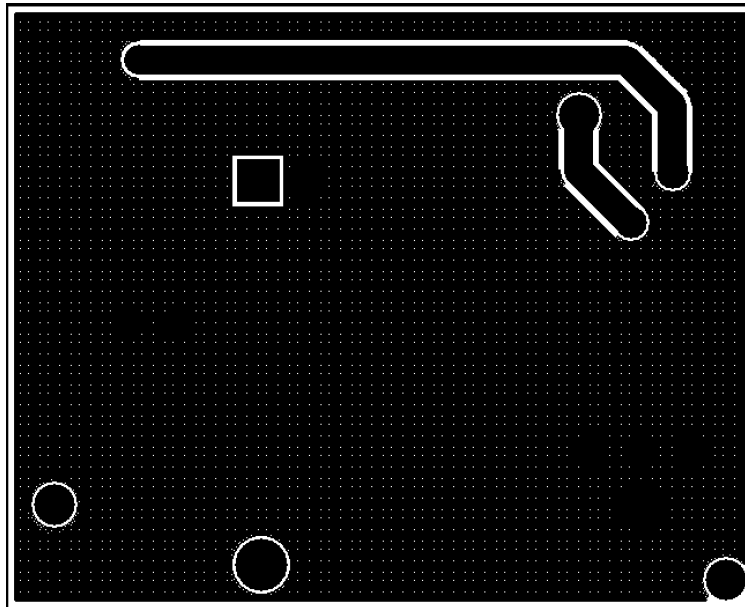
FIGURE 2. LM3489 Demonstration Board PCB Top Overlay

## Demonstration Board PCB Layout (Continued)



20191503

FIGURE 3. LM3489 Demonstration Board PCB Top Layer Layout



20191504

FIGURE 4. LM3489 Demonstration Board PCB Bottom Layer Layout

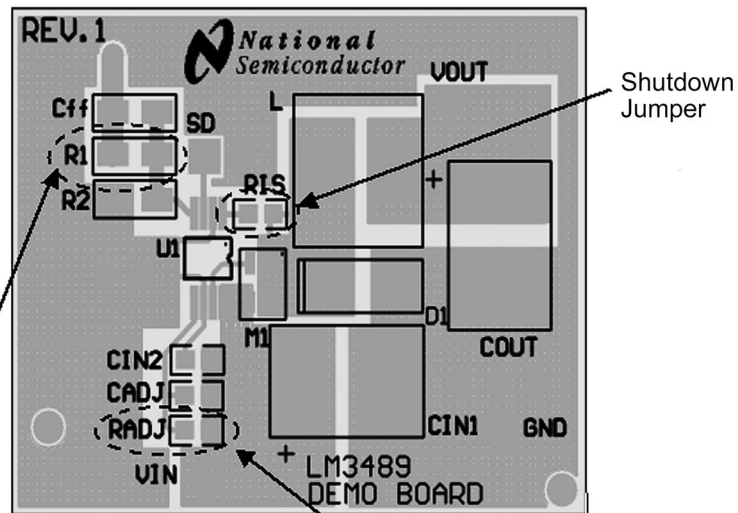
## Demonstration Board Quick Setup Procedures

Step	Description	Notes
1	Connect power supply to VIN terminals	V <sub>IN</sub> range 7V to 28V
2	Connect load to the VOUT terminals	I <sub>OUT</sub> range 0A to 500mA
3	SD jumper should left open for normal operation -Short this jumper to shutdown	
4	Set V <sub>IN</sub> = 12V, with no load applied, check V <sub>OUT</sub> with voltmeter	3.3V ±100 mV
5	Apply 500mA load and check V <sub>OUT</sub> again	3.3V ±100 mV
6	Short output terminals and check short circuit current with an ammeter	Nominal 1.4A
7	Short SD jumper to check for shutdown function	

## Demonstration Board Performance Characteristic

Description	Symbol	Condition	Min	Typical	Max	Unit
Input Voltage	V <sub>IN</sub>		7	12	28	V
Output Voltage	V <sub>OUT</sub>		3.2	3.3	3.4	V
Output Current	I <sub>OUT</sub>		0	0.5	1	A
Output Voltage Ripple	V <sub>OUT(Ripple)</sub>	20MHz Bandwidth limit	-	-	40	mV <sub>P-P</sub>
Output Voltage Regulation	ΔV <sub>OUT</sub>	All V <sub>IN</sub> and I <sub>OUT</sub> conditions	1.5		1.5	%
Efficiency		V <sub>IN</sub> = 7V	88		90	%
		V <sub>IN</sub> = 28V (I <sub>OUT</sub> = 100mA to 500mA)	73		80	%
Output Short Current Limit	I <sub>LIM-SC</sub>			1.4		A

## Output Voltage and Current Limit Setting



**Output Voltage setting**

Find the value of R1 by :

Assume R2 = 20kΩ

$$R1 = \left( \frac{V_{OUT}}{1.239} - 1 \right) \times 20k\Omega$$

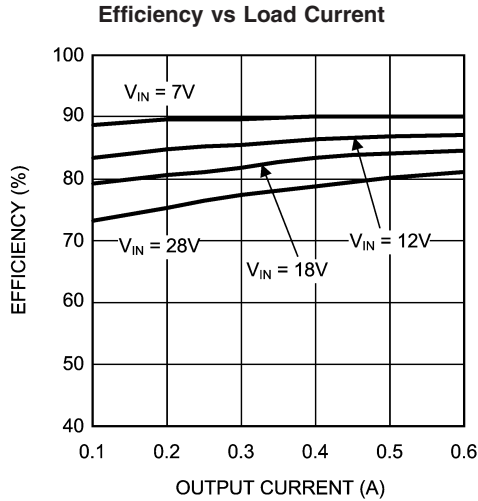
**Current Limit setting**

Find the value of R<sub>ADJ</sub> by :

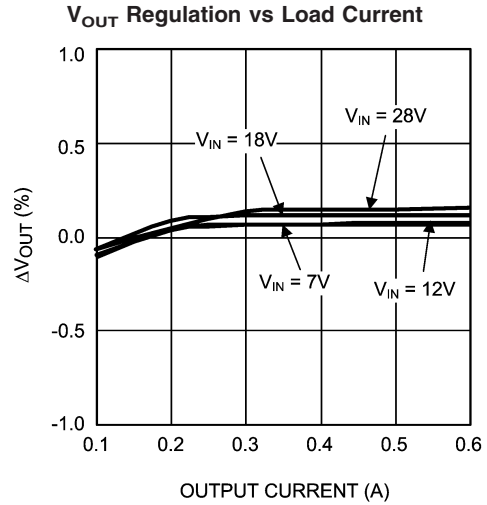
$$R_{ADJ} = \frac{R_{DS(on),M1} \times I_{IND\_PEAK}}{3 \times 10^{-6}} \Omega$$

20191514

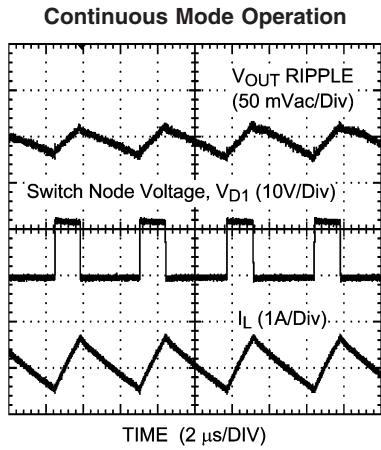
**Typical Performance and Waveforms** All curves taken at  $V_{IN} = 12V$  with the demonstration board for  $V_{OUT} = 3.3V$ .  $T_J = 25^\circ C$ , unless otherwise specified.



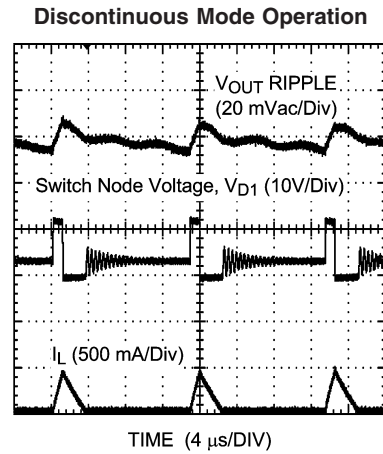
20191506



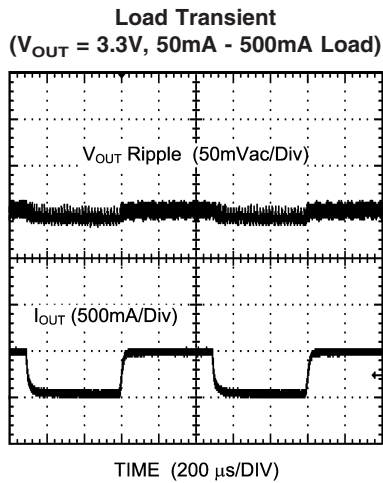
20191507



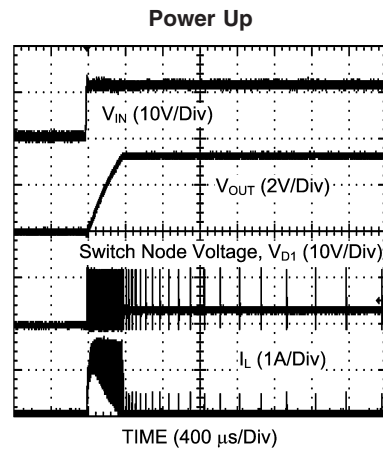
20191508



20191509



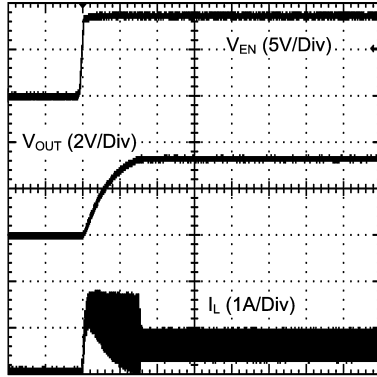
20191510



20191511

**Typical Performance and Waveforms** All curves taken at  $V_{IN} = 12V$  with the demonstration board for  $V_{OUT} = 3.3V$ .  $T_J = 25^\circ C$ , unless otherwise specified. (Continued)

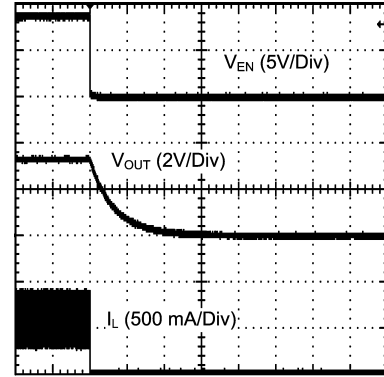
**Enable Transient**  
**Load Transient**  
 ( $V_{OUT} = 3.3V$ , 500mA Loaded)



TIME (400  $\mu s$ /DIV)

20191512

**Shutdown Transient**  
 ( $V_{OUT} = 3.3V$ , 500mA Loaded)



TIME (1 ms/DIV)

20191513

National does not assume any responsibility for use of any circuitry described, no circuit patent licenses are implied and National reserves the right at any time without notice to change said circuitry and specifications.

For the most current product information visit us at [www.national.com](http://www.national.com).

#### LIFE SUPPORT POLICY

NATIONAL'S PRODUCTS ARE NOT AUTHORIZED FOR USE AS CRITICAL COMPONENTS IN LIFE SUPPORT DEVICES OR SYSTEMS WITHOUT THE EXPRESS WRITTEN APPROVAL OF THE PRESIDENT AND GENERAL COUNSEL OF NATIONAL SEMICONDUCTOR CORPORATION. As used herein:

1. Life support devices or systems are devices or systems which, (a) are intended for surgical implant into the body, or (b) support or sustain life, and whose failure to perform when properly used in accordance with instructions for use provided in the labeling, can be reasonably expected to result in a significant injury to the user.
2. A critical component is any component of a life support device or system whose failure to perform can be reasonably expected to cause the failure of the life support device or system, or to affect its safety or effectiveness.

#### BANNED SUBSTANCE COMPLIANCE

National Semiconductor follows the provisions of the Product Stewardship Guide for Customers (CSP-9-111C2) and Banned Substances and Materials of Interest Specification (CSP-9-111S2) for regulatory environmental compliance. Details may be found at: [www.national.com/quality/green](http://www.national.com/quality/green).

Lead free products are RoHS compliant.



**National Semiconductor**  
Americas Customer  
Support Center  
Email: [new.feedback@nsc.com](mailto:new.feedback@nsc.com)  
Tel: 1-800-272-9959

[www.national.com](http://www.national.com)

**National Semiconductor**  
Europe Customer Support Center  
Fax: +49 (0) 180-530 85 86  
Email: [europe.support@nsc.com](mailto:europe.support@nsc.com)  
Deutsch Tel: +49 (0) 69 9508 6208  
English Tel: +44 (0) 870 24 0 2171  
Français Tel: +33 (0) 1 41 91 8790

**National Semiconductor**  
Asia Pacific Customer  
Support Center  
Email: [ap.support@nsc.com](mailto:ap.support@nsc.com)

**National Semiconductor**  
Japan Customer Support Center  
Fax: 81-3-5639-7507  
Email: [jpn.feedback@nsc.com](mailto:jpn.feedback@nsc.com)  
Tel: 81-3-5639-7560