

Test Procedure for the NCP3101BUCK1 Evaluation Board

Necessary Equipment:

- 1 Current limited DC source
- 2 DC Volt-Meter able to measure up to 20V DC
- 1 DC Amp-Meter able to measure up to 3A DC
- 1 DC Amp-Meter able to measure up to 7A DC
- 1 DC Electronic Load

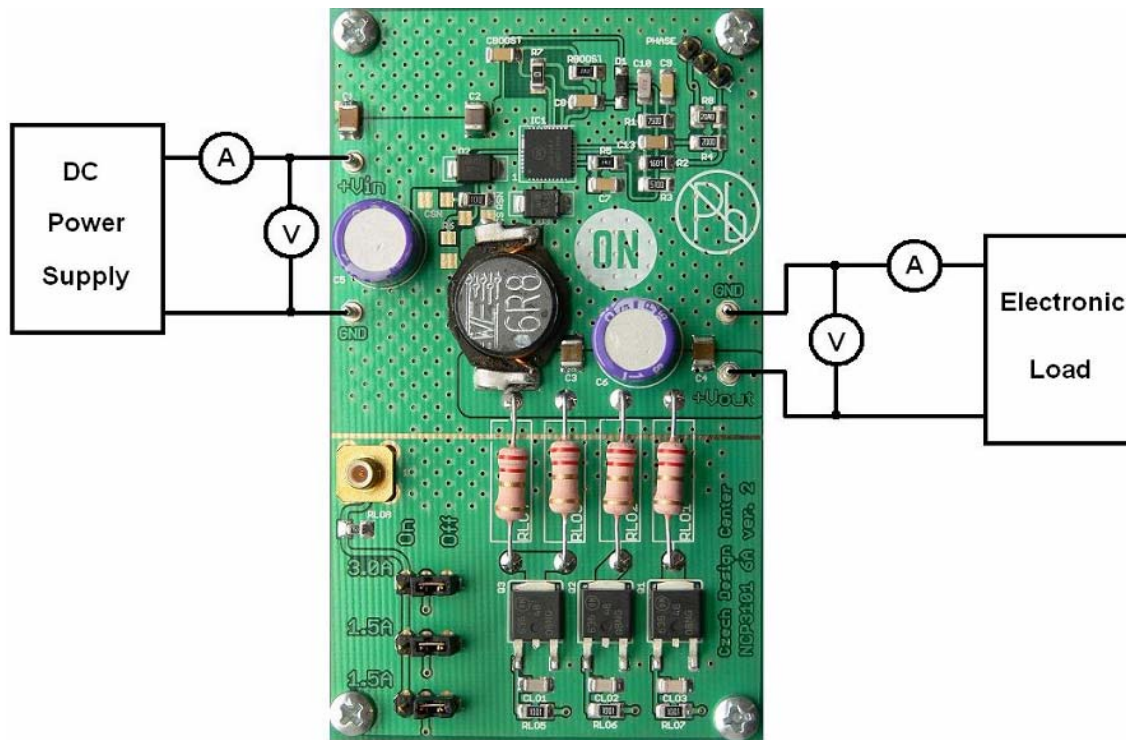


Figure 1: Test Setup

Test Procedure:

1. Connect the test setup as shown in Figure 1.
2. Apply an input voltage, $V_{cc} = 13.2V$
3. Apply $I_{out} = 0mA$ load.
4. Check that V_{out} is $\sim 3.3V$
5. Increase I_{out} load to 6A, Warning: The resistor R6 for OCP setting is not assembled
6. Check that V_{out} is $\sim 3.3V$
7. Power down the load
8. Power down V_{cc}
9. End of test