



MAX1162 Evaluation System/Evaluation Kit

General Description

The MAX1162 evaluation system (EV system) is a complete 16-bit data-acquisition system consisting of a MAX1162 evaluation kit (EV kit), Maxim 68HC16MODULE-DIP microcontroller (μ C) module, and USBTO232.

Order the complete EV system (MAX1162EVC16) for comprehensive evaluation of the MAX1162, using a personal computer (PC). Order the EV kit (MAX1162EVKIT) separately if the 68HC16MODULE-DIP module has already been purchased with a previous Maxim EV system or for custom use in other μ C-based systems.

This EV kit can also be used to evaluate the MAX1062 14-bit ADC.

To evaluate the MAX1062, request a MAX1062AEUB free sample when ordering this EV kit.

MAX1162 EV Kit Files

PROGRAM	FUNCTIONS
INSTALL.EXE	Installs the EV kit files on your computer
MAX1162.EXE	Application program
KIT1162.C16	Software loaded into 68HC16 microcontroller

DESIGNATION	QTY	DESCRIPTION
C1, C4	2	10 μ F \pm 20%, 16V X5R ceramic capacitors (1210) TDK C3225X5R1C106M
C2, C3, C5, C7, C8	5	0.1 μ F \pm 10%, 16V X7R ceramic capacitors (0603) TDK C1608X7R1C104KT
C6	1	4.7 μ F \pm 20%, 16V X5R ceramic capacitor (1206) TDK C3216X5R1C475M
C9	1	4700pF \pm 10%, 50V X7R ceramic capacitor (0603) TDK C1603X7R1H472KT
FB1, FB2	2	Surface-mount ferrite beads (0603) TDK MMZ1608B601C
J1	1	2 x 20 right-angle female connector
R1	1	200 Ω \pm 1% resistor (0603)

Features

- ◆ Proven PCB Layout
- ◆ Convenient On-Board Test Points
- ◆ Fully Assembled and Tested
- ◆ EV Kit Software Supports Windows® 98/2000/XP with RS-232/COM Ports
- ◆ EV Kit Software Supports Windows 2000/XP with USB Ports

Ordering Information

PART	TEMP RANGE	INTERFACE
MAX1162EVKIT	0°C to +70°C	User supplied
MAX1162EVC16	0°C to +70°C	Windows software

Note: The MAX1162 software is designed for use with the complete EV system. It includes both a μ C module and the EV kit. If the Windows software will not be used, the EV kit board can be purchased by itself, without the μ C module.

MAX1162EVC16 System

PART	QTY	DESCRIPTION
MAX1162EVKIT	1	MAX1162 EV kit
68HC16MODULE-DIP	1	68HC16 μ C module
USBTO232+	1	USB-to-COM port adapter board

Component List

DESIGNATION	QTY	DESCRIPTION
TB0	1	2-circuit terminal block
TP1	1	5-pin header
U1	1	16-bit ADC (10-pin μ MAX) MAX1162BCUB
U2	1	Logic buffer (5-pin SOT23) Fairchild Semiconductor NC7SZ125
U3	1	Op amp (5-pin SOT23) MAX4430EUK
—	1	MAX1162 EV kit data sheet (includes 68HC16MODULE-DIP manual)
—	1	PCB: MAX1162EVKIT
—	1	3.5in software disk, MAX1162 evaluation kit
—	1	MAX1162 data sheet

Windows is a registered trademark of Microsoft Corp.



For pricing, delivery, and ordering information, please contact Maxim/Dallas Direct! at 1-888-629-4642, or visit Maxim's website at www.maxim-ic.com.

MAX1162 Evaluation System/Evaluation Kit

Component Suppliers

SUPPLIER	PHONE	WEBSITE
Fairchild Semiconductor	888-522-5372	www.fairchildsemi.com
TDK Corp.	847-803-6100	www.component.tdk.com

Note: Indicate that you are using the MAX1162 when contacting these component suppliers.

Quick Start

Recommended Equipment—USB Port PC Connection Option

Before you begin, the following equipment is needed:

- MAX1162EVC16 (MAX1162EVKIT board, 68HC16MODULE-DIP, and USBTO232)
- Three DC power supplies: 8V to 20V, 5V, and -5V
- External reference: +4.096V
- Analog signal source: 0 to +4.096V
- A PC running Windows 2000/XP with an available standard USB port to connect to the USBTO232
- USB cable included with the USBTO232

Procedure

Caution: Do not turn on the power until all the connections are completed.

- 1) Visit the Maxim website (www.maxim-ic.com) to download the latest version of the USBTO232 User Guide. Follow the steps in the USBTO232 User Guide *Quick Start* section and return to step 2 of this *Quick Start* section when finished.
- 2) Carefully connect the boards by aligning the 40-pin connector of the MAX1162 EV kit with the 40-pin header of the 68HC16MODULE-DIP module. Gently press them together. The two boards should be flush against one another.
- 3) Ensure that the 68HC16MODULE-DIP module's SW1 switch is in the OFF position.
- 4) Connect the 8V to 20V power supply to the 68HC16MODULE-DIP module's terminal block (J2) located next to SW1. Observe the polarity marked on the board.
- 5) Connect the 5V power supply to the VDD pad (with respect to the GND pad) on the MAX1162 EV kit board.
- 6) Connect the -5V power supply to the VEE pad (with respect to the GND pad) on the MAX1162 EV kit board.

- 7) Apply a 4.096V reference voltage to the MAX1162 EV kit's terminal block (TB0) located in the upper-left corner of the MAX1162 EV kit board. Observe the polarity marked on the board.
- 8) Connect the USBTO232 board to the 68HC16MODULE-DIP module if you have not done so already.
- 9) The MAX1162 EV kit software should have already been downloaded and installed in the USBTO232 *Quick Start*.
- 10) Start the MAX1162 program by opening its icon in the **Start | Programs** menu.
- 11) Turn on all power supplies and enable the reference voltage. Slide SW1 to the ON position on the 68HC16MODULE-DIP module. Press the **OK** button to automatically connect and download the KIT1162.C16 file to the module.
- 12) Apply an input signal (0V to VREF) between AIN and GND. Observe the readout on the running Windows program.

Recommended Equipment—RS-232/COM Port PC Connection Option

Before you begin, the following equipment is needed:

- MAX1162EVC16 (MAX1162EVKIT board and 68HC16MODULE-DIP)
- Three DC power supplies: 8V to 20V, 5V, and -5V
- External reference: +4.096V
- Analog signal source: 0 to +4.096V
- A PC running Windows 98/2000/XP with an available standard serial port, preferably a 9-pin plug
- A standard serial cable to connect the PC's standard serial port to the 68HC16MODULE-DIP module

Procedure

Caution: Do not turn on the power until all the connections are completed.

- 1) Visit the Maxim website (www.maxim-ic.com/evkit-software) to download the latest version of the EV kit software. Save the EV kit software to a temporary folder and uncompress the file (if it is a .zip file).

MAX1162 Evaluation System/Evaluation Kit

- 2) Install the MAX1162 EV kit software on your computer by running the INSTALL.EXE program. The program files are copied and icons are created for them in the Windows **Start | Programs** menu.
- 3) Carefully connect the boards by aligning the 40-pin connector of the MAX1162 EV kit with the 40-pin header of the 68HC16MODULE-DIP module. Gently press them together. The two boards should be flush against one another.
- 4) Ensure that the 68HC16MODULE-DIP module's SW1 switch is in the OFF position.
- 5) Connect the 8V to 20V power supply to the 68HC16MODULE-DIP module's terminal block (J2) located next to SW1. Observe the polarity marked on the board.
- 6) Connect the 5V power supply to the VDD pad (with respect to the GND pad) on the MAX1162 EV kit board.
- 7) Connect the -5V power supply to the VEE pad (with respect to the GND pad) on the MAX1162 EV kit board.
- 8) Apply a 4.096V reference voltage to the MAX1162 EV kit's terminal block (TB0) located in the upper-left corner of the MAX1162 EV kit board. Observe the polarity marked on the board.
- 9) Connect a standard serial cable from the computer's serial port to the 68HC16MODULE-DIP module. If the PC's standard serial port has a 9-pin connector, use a straight-through, 9-pin female-to-male cable. If the PC's only available standard serial port has a 25-pin connector, a standard 25-pin to 9-pin adapter is required. The EV kit software checks the modem status lines (CTS, DSR, DCD) to confirm that the correct port has been selected.
- 10) Start the MAX1162 program by opening its icon in the **Start | Programs** menu.
- 11) Turn on all power supplies and enable the reference voltage. Slide SW1 to the ON position on the 68HC16MODULE-DIP module. Press the **OK** button to automatically connect and download the KIT1162.C16 file to the module.
- 12) Apply an input signal (0V to VREF) between AIN and GND. Observe the readout on the running Windows program.

Detailed Description

MAX1162 Stand-Alone EV Kit

The MAX1162 EV kit provides a proven PCB layout to evaluate the MAX1162. It must be interfaced to appropriate timing signals for proper operation. Connect 5V to VDD and -5V to VEE with respect to GND. Apply a 4.096V reference voltage to the MAX1162 EV kit's terminal block (TB0) located in the upper-left corner of the MAX1162 EV kit board. See the *MAX1162 EV Kit Schematic* (Figure 2) and refer to the MAX1162 data sheet for timing requirements.

MAX1162 EV System

The MAX1162EVC16 EV system operates from three user-supplied power supplies: 8V to 20V, 5V, and -5V. Connect the 8V to 20V power supply to the μ C module's terminal block (J2) located next to SW1. Observe the polarity marked on the board. Connect 5V to VDD and -5V to VEE with respect to GND on the MAX1162 EV kit board. Apply a 4.096V reference voltage to the MAX1162 EV kit's terminal block (TB0) located in the upper left corner of the MAX1162 EV kit board. See the *MAX1162 EV Kit Schematic* (Figure 2).

Windows 98/2000/XP-compatible software interfaces to the EV system board through the PC's standard serial port (virtual COM port). See the *Quick Start* section for complete setup and operating instructions.

Detailed Description of Software

The EV software's main window is shown in Figure 1. It controls the serial clock speed and sample rate. It also displays the voltage and output code as well as some statistics of the input signal. A separate graph shows the data changing in real time. The update rate is limited to about 10 samples per second, due to COM port bandwidth limitations.

Sample Rate

The **SPI SCLK Frequency** area allows the user to vary the ADC to μ C sample rate. The PC is not capable of retrieving the data that was stored in the memory of the μ C as fast as the μ C can obtain the data from the ADC. This is because the μ C's SPI interface is much faster than the PC's standard serial port (virtual COM port). Hence, the ADC to μ C sample rate refers to the sample

Evaluate: MAX1162/MAX1062

MAX1162 Evaluation System/Evaluation Kit

rate at which data is being sampled by the ADC and stored in the μC 's memory. Use the pulldown menu to select the desired SCLK frequency. The first two digits are the divisor for the μC 's internal clock. The next floating point number is the corresponding SCLK frequency. The ADC to μC sample rate is displayed in the **ADC to μC sample rate** field located on the right side of the main window.

The μC to PC transfer rate is controlled using the field at the bottom of the main window and can be controlled in two different ways. Pressing the **Read** button allows the user to manually grab a sample from the μC 's memory. Clicking the **Read Every** checkbox allows the user to automatically read samples from the μC 's memory at a rate selectable in milliseconds.

To retrieve a block of consecutively sampled data to the PC, click on the Sample menu located at the top left-hand corner of the main window. The data-block length is selectable and the data can be saved to a file.

Statistics

The **Minimum** and **Maximum** fields in the statistics area show the highest and lowest readings acquired. The **Average** field displays a running mean. When reading data manually by pressing the **Read** button, the **Average** and **RMS** fields require approximately five samples until they are accurately represented. The **Clear Statistics** button resets the statistics. To remove offset errors, first apply zero volts to the active input channel, press the **Clear Statistics** button, acquire some samples, and then check the **Null Offset** checkbox. Once checked, the label next to the **Null Offset** checkbox shows the sampled offset error. This value is subtracted from all subsequent measurements until the checkbox is unchecked.

Reference Voltage

The EV software assumes a 4.096V reference voltage, unless otherwise specified. To override the 4.096V reference value, apply the new reference voltage at the terminal block (TB0) on the MAX1162 EV kit board, type in the new reference voltage, without the volt unit, and press the **Set Vref** button. The EV kit software uses the value typed in the VREF field to translate the digital code to a voltage.

Detailed Description of Hardware

The MAX1162 is a 16-bit serial ADC. When the MAX1162 EV kit board is connected to the 68HC16MODULE-DIP module, power is provided to U2 by the module. The user must also provide 5V to VDD and -5V to VEE (with respect to the GND pads) on the MAX1162 EV kit board. The MAX1162 EV kit contains two different types of buffers. U2 is a logic buffer to limit the load capacitance that is seen by the DOUT line of the MAX1162. U1 is powered from VDD. U3 is powered from VDD and VEE. A terminal block (TB0) has also been provided on the MAX1162 EV kit board for the external reference. See the *Reference Voltage* section and the *MAX1162 EV Kit Schematic* (Figure 2).

MAX1162 Evaluation System/Evaluation Kit

Evaluate: MAX1162/MAX1062

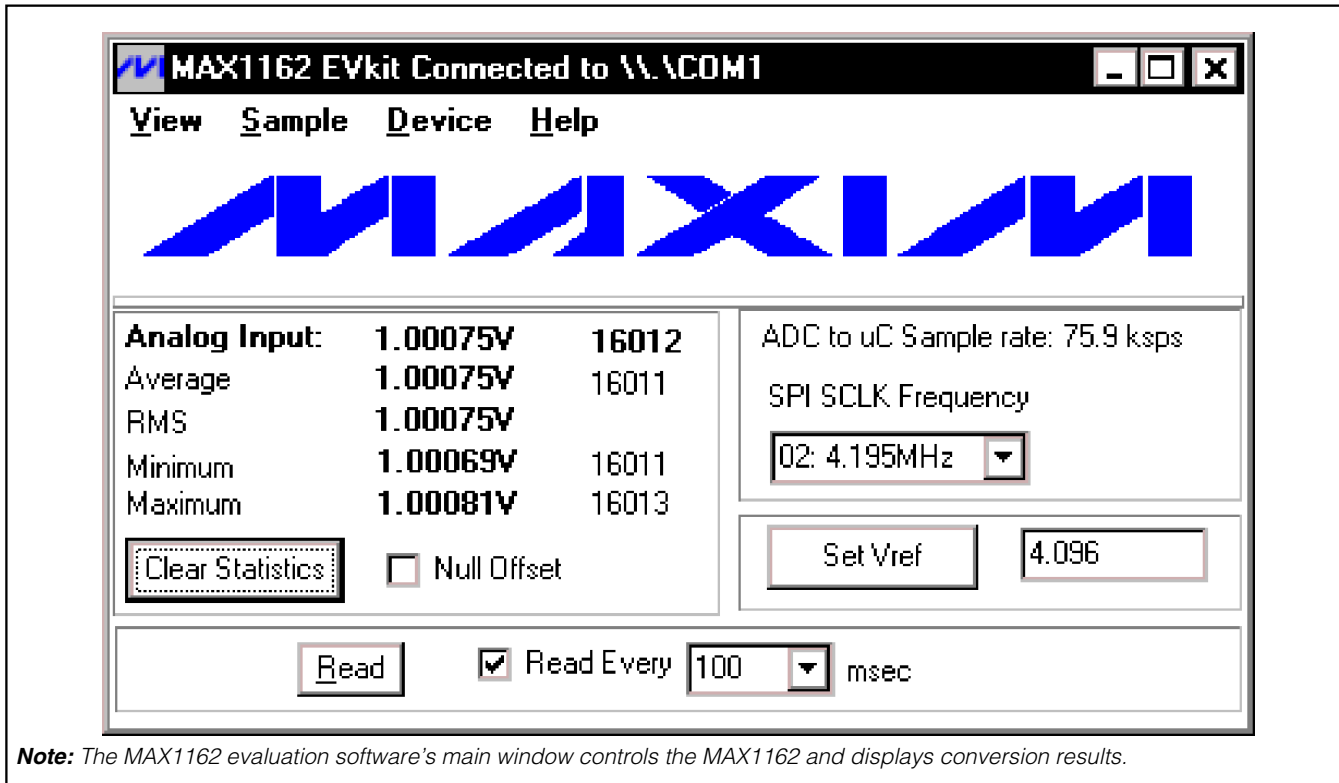


Figure 1. MAX1162 EV Software's Main Window

MAX1162 Evaluation System/Evaluation Kit

Evaluate: MAX1162/MAX1062

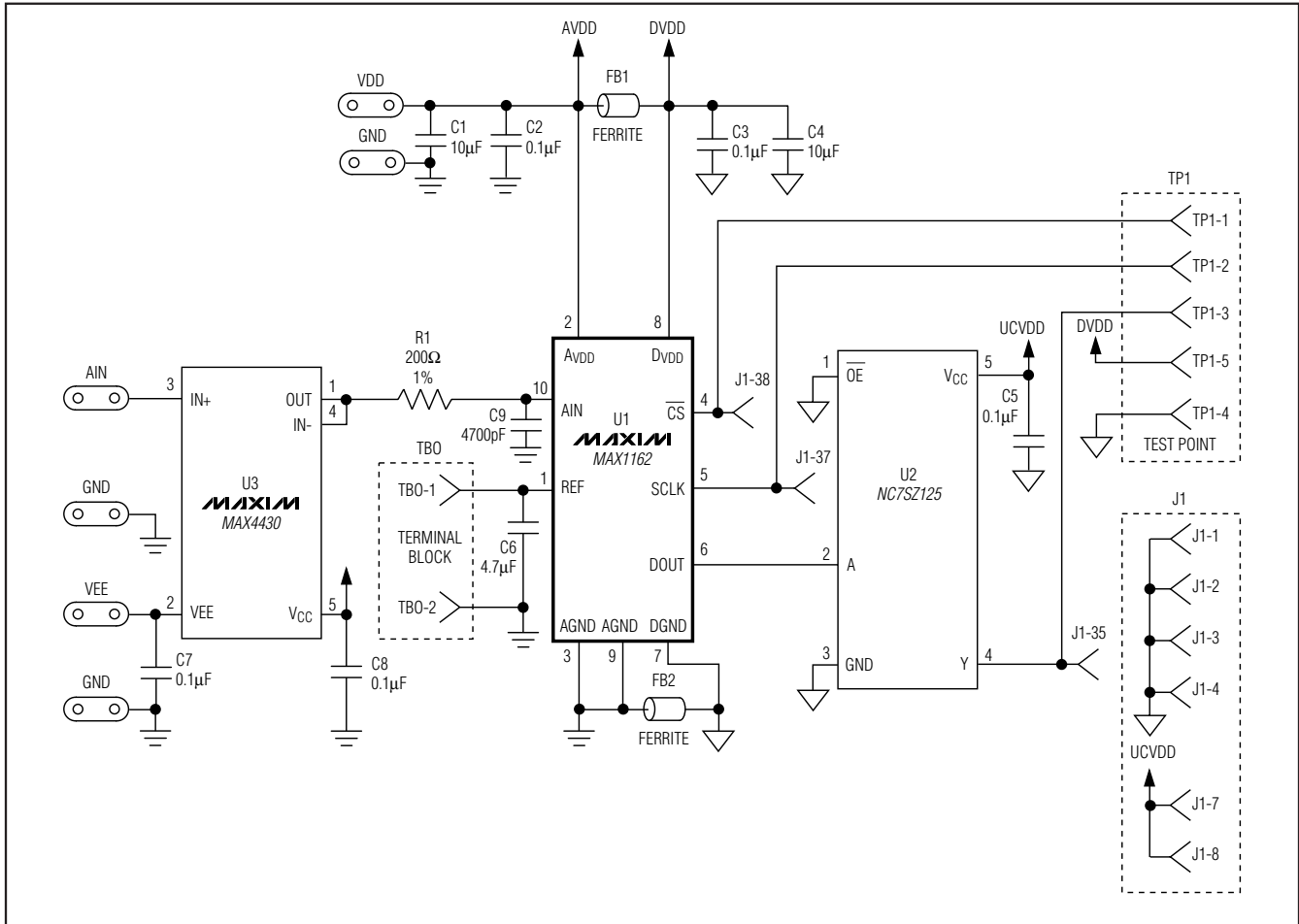


Figure 2. MAX1162 EV Kit Schematic

MAX1162 Evaluation System/Evaluation Kit

Evaluate: MAX1162/MAX1062

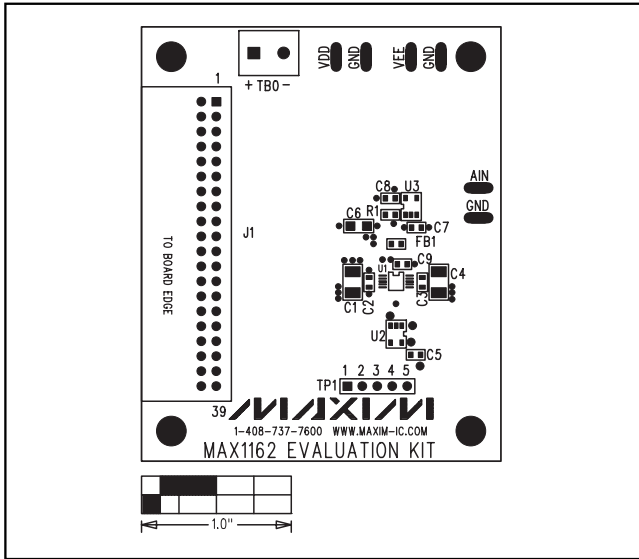


Figure 3. MAX1162 EV Kit Component Placement Guide—Component Side

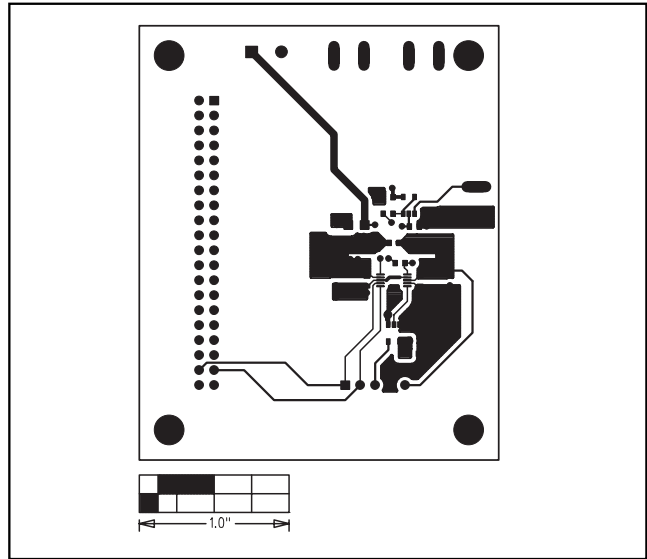


Figure 4. MAX1162 EV Kit PCB Layout—Component Side

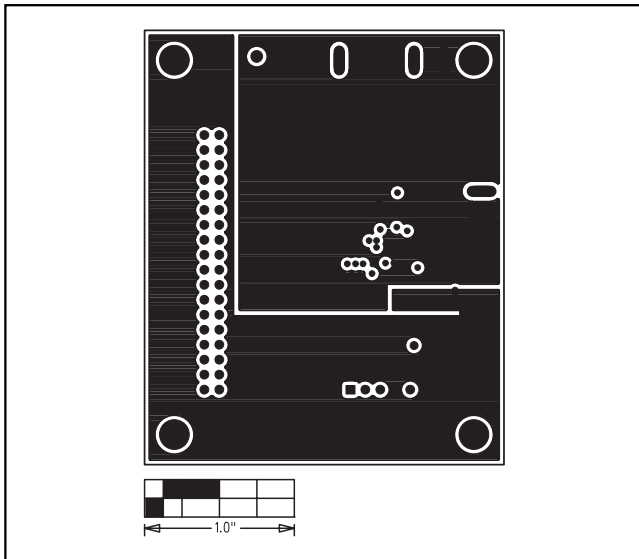


Figure 5. MAX1162 EV Kit PCB Layout—Inner Layer 2 (GND)

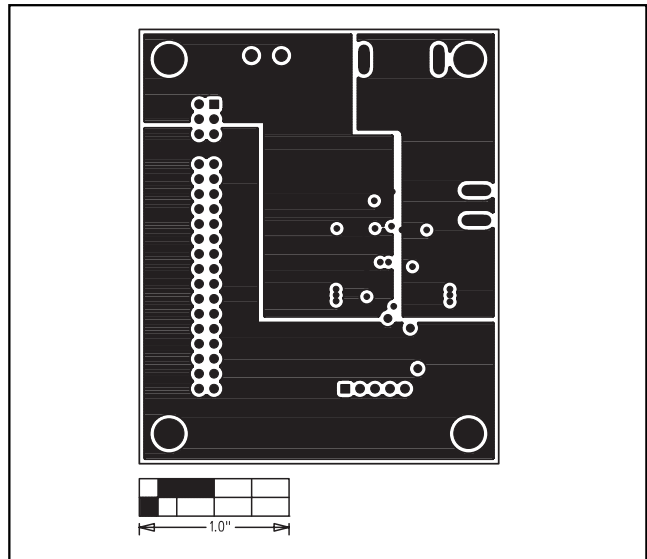


Figure 6. MAX1162 EV Kit PCB Layout—Inner Layer 3 (VDD)

MAX1162 Evaluation System/Evaluation Kit

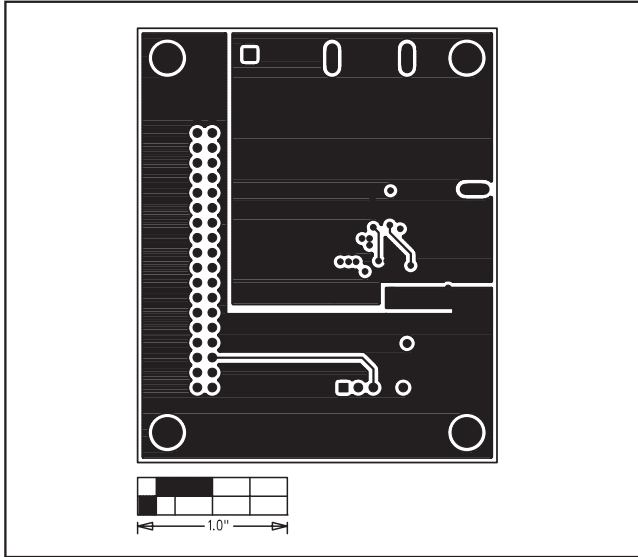


Figure 7. MAX1162 EV Kit PCB Layout—Solder Side

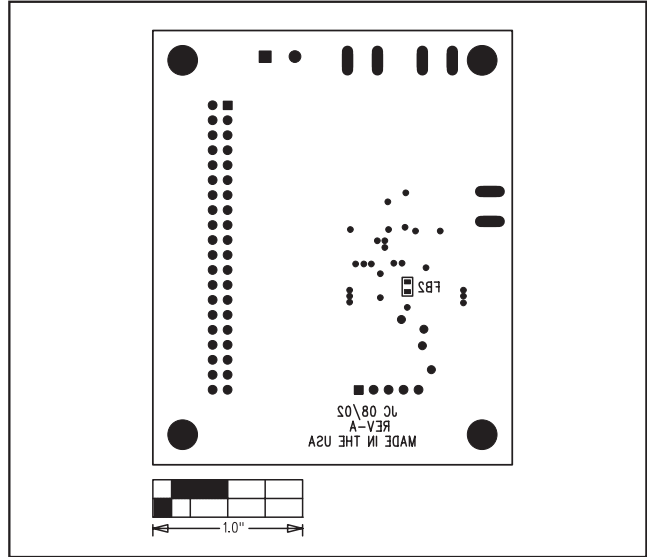


Figure 8. MAX1162 EV Kit Component Placement Guide—Solder Side

Revision History

Pages changed at Rev 1: 1–8

Maxim cannot assume responsibility for use of any circuitry other than circuitry entirely embodied in a Maxim product. No circuit patent licenses are implied. Maxim reserves the right to change the circuitry and specifications without notice at any time.

8 Maxim Integrated Products, 120 San Gabriel Drive, Sunnyvale, CA 94086 408-737-7600

© 2006 Maxim Integrated Products

MAXIM is a registered trademark of Maxim Integrated Products, Inc.