

**PART NUMBER:** VAT2-SMT series

**DESCRIPTION:** dc-dc converter

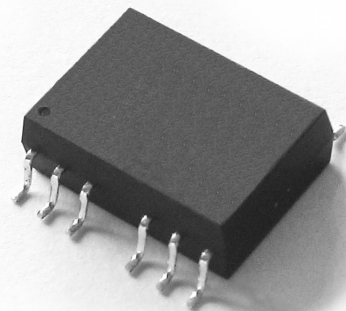
**description**

Designed to convert fixed voltages into an isolated voltage, the VAT2-SMT series is well suited for providing board-mount local supplies in a wide range of applications, including mixed analog/digital circuits, test & measurement equip., process/machine controls, datacom/telecom fields, etc...

The semi-regulated output can be followed by 3-terminal regulators to provide output protection, in addition to output regulation.

**features**

- isolated 2 W output
- temperature range: -40°C~+85°C
- unregulated
- high efficiency to 85%
- dual voltage output
- small footprint
- SMD package style
- industry standard pinout
- UL94-V0 package
- no heatsink required
- 1K Vdc isolation
- high power density
- no external component required
- low cost



model number	input voltage		output voltage	output current		efficiency
	nominal	range		max.	min.	
VAT2-S5-D5-SMT	5 Vdc	4.5~5.5 Vdc	±5 Vdc	±200 mA	±20 mA	82%
VAT2-S5-D9-SMT	5 Vdc	4.5~5.5 Vdc	±9 Vdc	±111 mA	±11 mA	83%
VAT2-S5-D12-SMT	5 Vdc	4.5~5.5 Vdc	±12 Vdc	±83 mA	±8 mA	84%
VAT2-S5-D15-SMT	5 Vdc	4.5~5.5 Vdc	±15 Vdc	±67 mA	±7 mA	82%
VAT2-S12-D5-SMT	12 Vdc	10.8~13.2 Vdc	±5 Vdc	±200 mA	±20 mA	83%
VAT2-S12-D9-SMT	12 Vdc	10.8~13.2 Vdc	±9 Vdc	±111 mA	±11 mA	84%
VAT2-S12-D12-SMT	12 Vdc	10.8~13.2 Vdc	±12 Vdc	±83 mA	±8 mA	84%
VAT2-S12-D15-SMT	12 Vdc	10.8~13.2 Vdc	±15 Vdc	±67 mA	±7 mA	85%

**OUTPUT SPECIFICATIONS**

item	test conditions	min.	typ.	max.	units
output power		0.2		2	W
line regulation	for Vin change of 1%			±1.2	%
load regulation	10% to 100% full load (±5 output)		12.8	15	%
	10% to 100% full load (±9 output)		8.3	15	%
	10% to 100% full load (±12 output)		6.8	15	%
	10% to 100% full load (±15 output)		6.3	15	%
output voltage accuracy	see tolerance envelope graph				
temperature drift	@ 100% load			0.03	%/°C
output ripple	20 MHz bandwidth		75	150	mVp-p
switching frequency	full load, nominal input		70		KHz

**NOTE:**

1. All specifications measured at TA=25°C, humidity <75%, nominal input voltage and rated output load unless otherwise specified.

**PART NUMBER:** VAT2-SMT series

**DESCRIPTION:** dc-dc converter

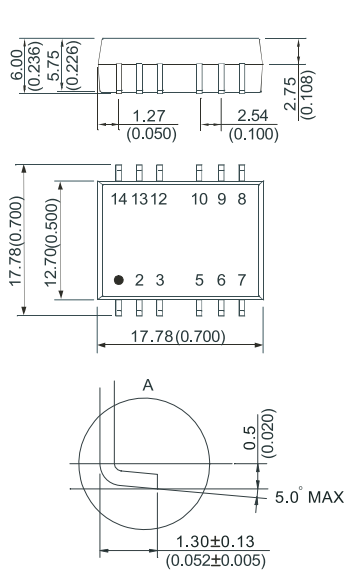
## GENERAL SPECIFICATIONS

short circuit protection	<1 second
temperature rise at full load	25°C max, 15°C typ.
cooling	free air convection
operating temperature range	-40°C to +85°C
storage temperature range	-55°C to +125°C
soldering temperature	260°C (1.5mm from case for 10 sec.)
storage humidity range	<95%
case material	plastic (UL94-V0)
MTBF	>3,500,000 hrs.

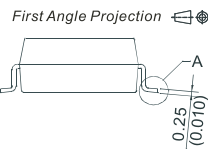
## ISOLATION SPECIFICATIONS

item	test conditions	min.	typ.	max.	units
isolation voltage	tested for 1 min.	1000			Vdc
insulation resistance	test at 500 Vdc	1000			M Ω

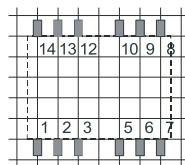
## DIMENSIONS (mm)



Note:  
Unit:mm(inch)  
Pin section:0.60\*0.25mm(0.024\*0.010inch)  
Pin tolerances:±0.10mm(±0.004inch)  
General tolerances:±0.25mm(±0.010inch)



RECOMMENDED FOOTPRINT  
Bottom view, grid:2.54mm(0.1inch)



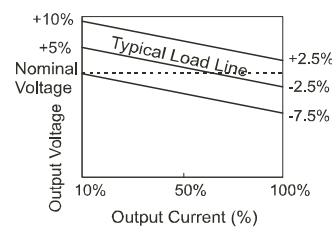
FOOTPRINT DETAILS

Pin	Duals
1	GND
2	Vin
5	-Vo
6	0V
7	+Vo
10	-Vo
Others	NC

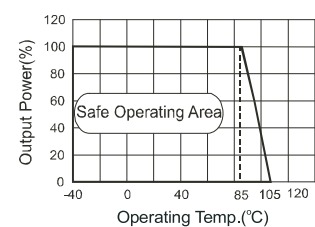
NC:No Connection

## TYPICAL CHARACTERISTICS

Tolerance Envelope Graph



Temperature Derating Graph



**PART NUMBER:** VAT2-SMT series

**DESCRIPTION:** dc-dc converter

**APPLICATION NOTES:**
**- Input filtering**

To reduce the reflected ripple current and minimize EMI, especially when the converter input is more than 2" away from the DC source, it is recommended to connect a low ESR electrolytic capacitor between Vin and Gnd. The values suggested are as shown in Table 1. If additional filtering is required, the capacitance may be increased, or expanded to an LC network as shown in Figure 1.

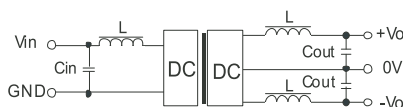
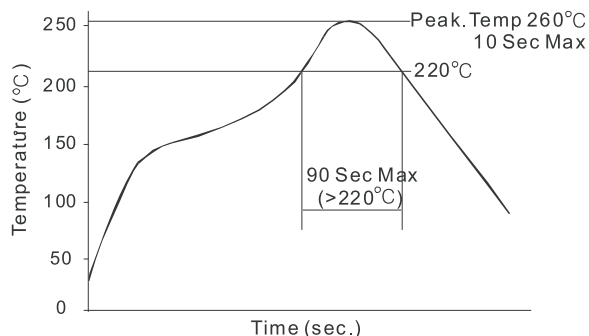
**TABLE 1**

Vin (V dc)	Cin ( $\mu$ F)	Vout (V dc)	Cout ( $\mu$ F)
5	4.7	$\pm 5$	4.7
12	2.2	$\pm 9$	2.2
-	-	$\pm 12$	1
-	-	$\pm 15$	0.47

not recommend to connect any external capacitor in application field with less than 0.5 watt output.

**- Output filtering**

Output capacitance may be increased for additional filtering, but should not exceed 10 $\mu$ F or expanded to an LC network as in Figure 1.

**FIGURE 1**

**RECOMMENDED REFLOW SOLDERING PROFILE**

**- Minimum loading**

The converter needs a minimum of 10% loading to maintain output regulation. Operation under no-load conditions will not cause immediate damages but may reduce reliability, and cause performance not to meet specifications.

**- Regulation**

With a semi-regulated design, the converter's output voltage varies with load current and will change proportionally to the input voltage. If regulated output is needed, an external regulator can be used as shown in Figure 2.

**- Protection**

The converter has minimal protection against input over-voltage or output over-load, and may be permanently damaged if exposed to these conditions. An input clamping device can be used for input voltage limiting. An input fuse or an output fuse also be used to protect against over-loading.

**- Dual outputs used as a single output**

The +Vout and -Vout can be used to obtain a single output that is the sum of the two outputs. In this case, the COM pin shouldn't be used.

**- External Regulator**

An external 3-terminal regulator can be connected to the output of the converter to achieve full regulation. Make sure the converter's output voltage provides sufficient head room for the regulator. An additional benefit is that the built-in protection features in the regulator, such as OCP, OTP, etc, will protect the converter also. In a complimentary supply, a negative output regulator must be used to achieve the negative regulated output.

**FIGURE 2**
