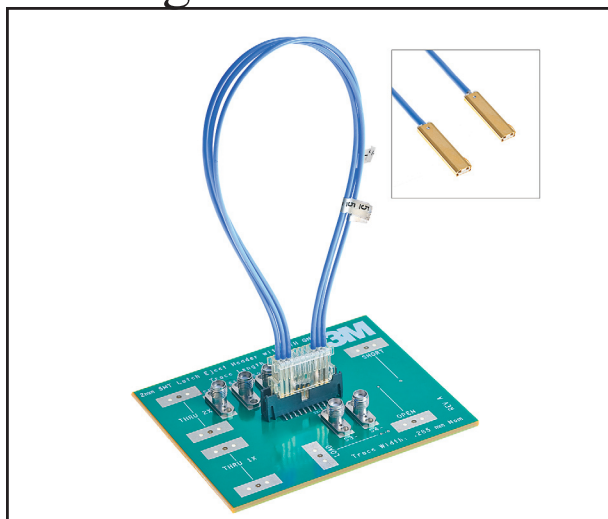


# 3M™ Sample Development Design Kits for High Speed Cabling and Connectors

94XX Series



- 9401-9404 2 MM SCI Design Kits
- SCI Cable Assemblies and Corresponding Boardmount Headers

#### **Purpose**

- Assist designers in evaluating signal integrity performance of 3M SCI cable assemblies
  - Eye Patterns
  - Crosstalk (Near end & Far end)
  - Attenuation
- Support component engineers in technical specification development

Date Modified: October 1, 2008

TS-2298-B  
Sheet 1 of 3

---

## Physical

See TS-2199 and TS-2105

---

## Electrical

See TS-2199 and TS-2105

Signal Data shown in white paper [2 mm High Speed Cable Assembly](#)

---

## Environmental

See TS-2199 and TS-2105

---

**3M**

**Electronic Solutions Division  
Interconnect Solutions**

<http://www.3M.com/interconnects/>

3M and MetPak are trademarks of 3M Company.  
For technical, sales or ordering information call

**800-225-5373**

# 3M™ Sample Development Design Kits for High Speed Cabling and Connectors

94XX Series

9401 Sample Development Kit for 2 mm SCI Surface Mount Header without PCB Test Board			
Contents			
Qty	Description	Part Number (ref)	Tech Sheet
1	2 x 25 Carrier	9350	TS-2105
1	2 x 25 L/E Header-SMT	155250-2400-RB	TS-2199
3	24 Inch Double-ended Twin-Ax Assy	98-3030-058-024.0-0	TS-2105
3	24 Inch Double-ended Coax Assy	98-2929-027-024.0-0	TS-2105
1	White Paper	78-9100-7515-5	N/A
1	Development Kit Instructions, 2 mm High Speed Cable Assembly	78-9100-7516-3	N/A

9402 Sample Development Kit for 2 mm SCI Surface Mount Header with PCB Test Board			
Contents			
Qty	Description	Part Number (ref)	Tech Sheet
1	2 x 25 Carrier	9350	TS-2105
1	PCB with SMT 2 x 25 Header <sup>2</sup>	78-9100-7555-1	TS-2199
3	24 Inch Double-Ended Twin-Ax Assy	98-3030-058-024.0-0	TS-2105
3	24 Inch Double-Ended Coax Assy	98-2929-027-024.0-0	TS-2105
1	White Paper	78-9100-7515-5	N/A
1	Development Kit Instructions, 2 mm High Speed Cable Assembly	78-9100-7516-3	N/A

9403 Sample Development Kit for 2 mm SCI Through-Hole Header without PCB Test Board			
Contents			
Qty	Description	Part Number (ref)	Tech Sheet
1	Part Number (ref)	9350	TS-2105
1	2 x 25 L/E Header-TH	155250-6402-RB	TS-2199
3	24 Inch Double-Ended Twin-Ax Assy	98-3030-058-024.0-0	TS-2105
3	24 Inch Double-Ended Coax Assy	98-2929-027-024.0-0	TS-2105
1	White Paper	78-9100-7515-5	N/A
1	Development Kit Instructions, 2 mm High Speed Cable Assembly	78-9100-7516-3	N/A

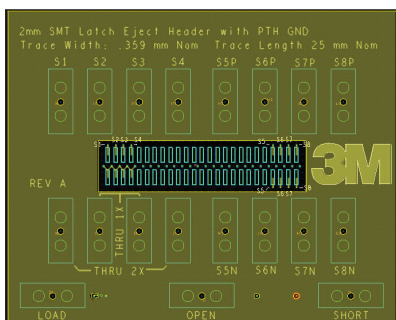
9404 Sample Development Kit for 2 mm SCI Through-Hole Header with PCB Test Board			
Contents			
Qty	Description	Part Number (ref)	Tech Sheet
1	Part Number (ref)	9350	TS-2105
1	PCB with TH 2 x 25 Header <sup>2</sup>	78-9100-7556-9	TS-2199
3	24 Inch Double-ended Twin-Ax Assy	98-3030-058-024.0-0	TS-2105
3	24 Inch Double-ended Coax Assy	98-2929-027-024.0-0	TS-2105
1	White Paper	78-9100-7515-5	N/A
1	Development Kit Instructions, 2 mm High Speed Cable Assembly	78-9100-7516-3	N/A

TS-2298-B  
Sheet 2 of 3

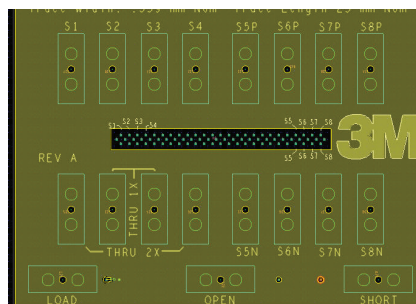
# 3M™ Sample Development Design Kits for High Speed Cabling and Connectors

94XX Series

Test Board - SMT Header



Test Board-TH Header



TS-2298-B  
Sheet 3 of 3