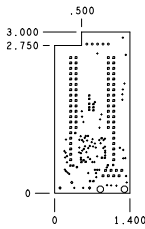


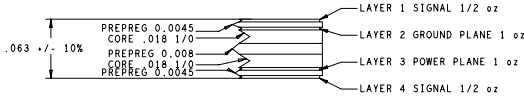
REVISIONS			
REV	DESCRIPTION	DATE	APPROVED
**	RELEASE FOR MANUFACTURING	03/20/06	DFK



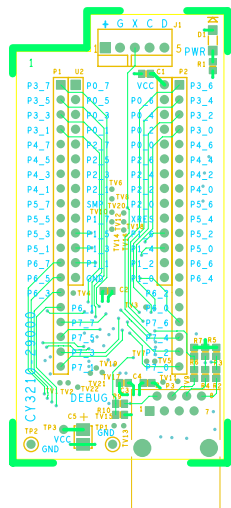
DRILL CHART				
ALL UNITS ARE IN MILS				
FIGURE	SIZE	TOLERANCE	PLATED	QTY
*	10.0	<del>±.010</del>	PLATED	80
*	20.0	0.003	PLATED	22
*	35.0	0.003	PLATED	76
*	40.0	0.003	PLATED	5
*	43.0	0.003	PLATED	3
O	128.0	0.003	NON-PLATED	2

NOTES: UNLESS OTHERWISE SPECIFIED

- MATERIAL:
  - EPOXY GLASS LAMINATE AND PREPREG, TYPE FR-4.
  - USE HTE COPPER 1/2 oz. COPPER FOIL EXTERNAL LAYERS AND 1 oz. COPPER FOIL FOR INTERNAL LAYERS UNLESS OTHERWISE SPECIFIED IN STACK VIEW.
  - OVERALL METAL TO METAL THICKNESS .063 +/- 10%
- DRILLING:
  - DIAMETERS IN DRILL TABLE ARE FINISHED HOLE SIZES +/- .003, UNLESS OTHERWISE SPECIFIED IN DRILL TABLE.
  - TEARDROP ALLOWED ON ENTRY OF VIA ON EVERY TRACE LAYER.
- PLATING:
  - COPPER PLATING IN THRU-HOLES .001 min.
- MARKING:
  - SILKSCREEN IN WHITE NON-CONDUCTIVE EPOXY INK ON PRIMARYSIDE OF THE BOARD OR BOTH SIDES IF APPLICABLE.
  - FABRICATOR TO ETCH DATE CODE AND LOGO ON SECONDARY SIDE.
- FINAL FABRICATION:
  - SOLDERMASK PRIMARY AND SECONDARY SIDE OF BOARD USING LIQUID PHOTOIMAGABLE MASK MATERIAL OVER BARE COPPER PER IPC-SM-840, MASK ARTWORKS PROVIDED ARE 1:1 SOLDERMASK COLOR #GREEN#.
- WHEN REQUIRED, COPPER FINISH SHALL BE FINISHED TIN-LEAD (60-40 MIN) HASL.
- BOARDS SHALL BE PURCHASED FROM UL RECOGNIZED VENDORS ONLY AND SHALL BE MARKED IN COPPER ON SECONDARY SIDE OF BOARD WITH VENDORS UL IDENTIFICATION, FLAMABILITY RATING (94-V0), AND DATE CODE (WWYY).
- MANUFACTURE BOARD TO BE IN ACCORDANCE WITH PERFORMANCE STANDARD IPC-6011/8012 CLASS 2 BOARD TO BE INSPECTED PER IPC-600-A CLASS 2.
- MAXIMUM WRAP OR TWIST SHALL NOT EXCEED .010 in/in.

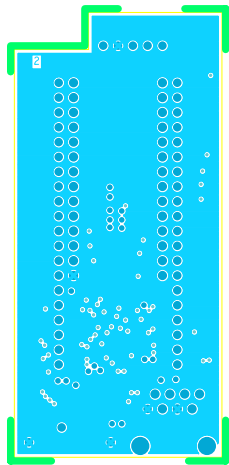


UNLESS OTHERWISE SPECIFIED	SIGNATURES	DATE	12230 World Trade Drive #200 CYPRESS SEMICONDUCTOR San Diego, CA 92128 (858) 613-7931	
DIMENSIONS ARE IN INCHES	DRAWN: ZMK	03/13/06	<b>FABRICATION DRAWING</b> <b>CY3210-29000</b> <b>POD MODULE DESIGN</b>	
TOLERANCES UNLESS OTHERWISE SPECIFIED	CHECKED: ECU	03/20/06		
2 PL DECIMALS +/- .010	ENGRG: DFK	03/20/06		
3 PL DECIMALS +/- .005	ISSUED:			
THIRD ANGLE PROJECTIONS			SIZE: C	REV: **
CYPRESS PROPRIETARY THIS DOCUMENT CONTAINS CONFIDENTIAL PROPRIETARY INFORMATION THAT IS CYPRESS SEMICONDUCTOR PROPERTY AND IS NOT TO BE DISCLOSED TO ANY OTHERS WITHOUT THE WRITTEN PERMISSION OF CYPRESS.			FORM NO: PDC-9311	SHEET: 1 OF 1
			SCALE: 1/1	

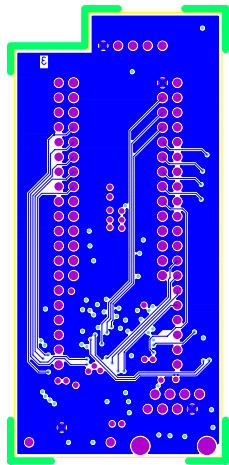


PDC-9311 REV \*\* PRIMARY SIDE

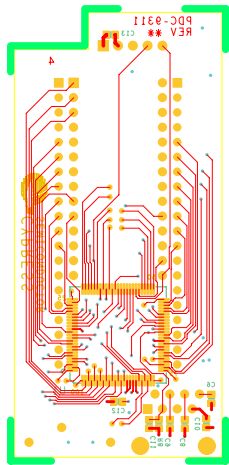
PDC-9311 REV \*\* PRIMARY SILKSCREEN



PDC-9311 REV\*\* LAYER 2 GND



PDC-9311 REV\*\* LAYER 3 VCC



PDC-0311 REV \*\* SECONDARY SIDE

PDC-0311 REV \*\* SECONDARY SILKSCREEN