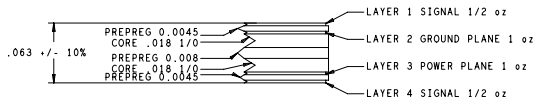


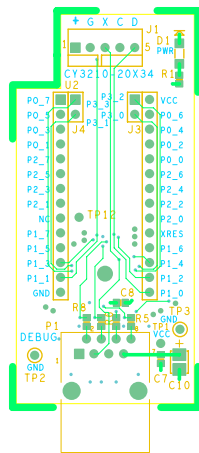
REVISIONS			
REV	DESCRIPTION	DATE	APPROVED
**	RELEASE FOR MANUFACTURING	01/11/06	CKS
*A	CHANGED PART NUMBER ON SILKSCREEN FROM CY3210-20X TO CY3210-20X34. ADDED SILKSCREEN TEXT AND CYPRESS LOGO. CHANGED DIMENSION BOARD OUTLINE X FROM 1.40 TO 1.20 AND FROM .550 TO .300. CHANGED DIMENSION BOARD OUTLINE Y FROM 2.875 TO 2.625 AND FROM 2.575 0 TO 2.175	05/23/06	DFK

DRILL CHART				
ALL UNITS ARE IN MILS				
FIGURE	SIZE	TOLERANCE	PLATED	QTY
*	10.0	$\pm .003$	PLATED	37
*	20.0	0.003	PLATED	11
*	35.0	0.003	PLATED	45
*	43.0	0.003	PLATED	4
⊕	100.0	0.003	PLATED	1
○	128.0	0.003	NON-PLATED	2



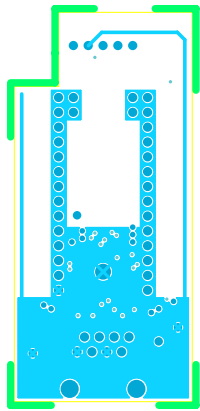
- NOTES: UNLESS OTHERWISE SPECIFIED
- ROHS COMPLIANT CERTIFICATION OR MATERIAL DECLARATION REQUIRED
 - MATERIAL:
 - NELCO 4000-11 OR IS420 OR EQUIVALENT. MATERIAL MUST CONFORM TO UL94V-0.
 - USE HTE COPPER 1/2 OZ., COPPER FOIL EXTERNAL LAYERS AND 1 OZ COPPER FOIL FOR INTERNAL LAYERS UNLESS OTHERWISE SPECIFIED IN STACK VIEW.
 - OVERALL METAL TO METAL THICKNESS .XXX +/- 10%
 - DRILLING:
 - DIAMETERS IN DRILL TABLE ARE FINISHED HOLE SIZES +/- .003. UNLESS OTHERWISE SPECIFIED IN DRILL TABLE.
 - TEARDROP ALLOWED ON ENTRY OF VIA ON EVERY TRACE LAYER.
 - PLATING:
 - COPPER PLATING IN THRU-HOLES .001" min.
 - MARKING:
 - SILKSCREEN IN WHITE NON-CONDUCTIVE EPOXY INK ON PRIMARY SIDE OF THE BOARD OR BOTH SIDES IF APPLICABLE.
 - FABRICATOR TO ETCH DATE CODE AND LOGO ON SECONDARY SIDE.
 - FINAL FABRICATION:
 - SOLDERMASK PRIMARY AND SECONDARY SIDE OF BOARD USING LIQUID PHOTOIMAGABLE. MASK MATERIAL OVER BARE COPPER PER IPC-SM-840. SOLDERMASK COLOR **GREEN**.
 - FINISH:
 - SHALL BE ELECTROLYTIC NICKEL/GOLD, ELECTROLESS NICKEL/IMMERSON GOLD(ENIG).
 - NICKEL THICKNESS: 100-200 MICROINCHES.
 - GOLD THICKNESS 3-10 MICROINCHES.
 - BOARDS SHALL BE PURCHASED FROM UL RECOGNIZED VENDORS ONLY AND SHALL BE MARKED IN COPPER ON SECONDARY SIDE OF BOARD WITH VENDORS UL IDENTIFICATION, FLAMABILITY RATING (94-V0), DATE CODE (WWYY) AND ROHS COMPLIANT SYMBOL.
 - MANUFACTURE BOARD TO BE IN ACCORDANCE WITH PERFORMANCE STANDARD IPC-6011/6012 CLASS 2 BOARD TO BE INSPECTED PER IPC-600-A CLASS 2.
 - MAXIMUM BOW OR TWIST SHALL NOT EXCEED 0.007 in/in.

UNLESS OTHERWISE SPECIFIED	SIGNATURES	DATE	12230 World Trade Drive #200 San Diego, CA 92128 (858) 613-7931
DIMENSIONS ARE IN INCHES	DRAWN ZMK	01/02/06	 FABRICATION DRAWING CY3210-20X34 QUARK POD MODULE DESIGN
TOLERANCES ON: ANGLES +/- .2°	CHECKED ECU	01/11/06	
2 PL DECIMALS +/- .005	ENGRD CKS	01/11/06	
3 PL DECIMALS +/- .005	ISSUED		
THIRD ANGLE PROJECTIONS			
<small>CYPRESS PROPRIETARY THIS DOCUMENT CONTAINS CONFIDENTIAL PROPRIETARY INFORMATION THAT IS CYPRESS SEMICONDUCTOR PROPERTY. DO NOT DISCLOSE TO AN UNLICENSED FOR OTHERS EXCEPT AS AUTHORIZED BY CYPRESS.</small>			SIZE C FROM NO PDCR-9297 REV *A SCALE: 1/1 SHEET: 1 OF 1

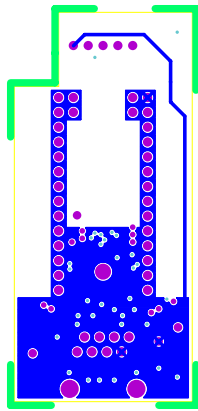


PDCR-9297 REV *A PRIMARY SIDE

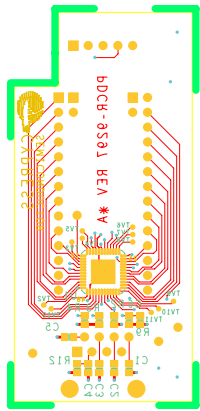
PDCR-9297 REV *A PRIMARY SILKSCREEN



PDCR-9297 REV *A LAYER 2 GND



PDCR-9297 REV *A LAYER 3 VCC



BDCR-0501 REV A * SECONDARY SILKSCREEN
BDCR-0501 REV A * SECONDARY SIDE