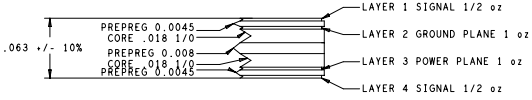


REVISIONS			
REV	DESCRIPTION	DATE	APPROVED
**	RELEASE FOR MANUFACTURING	03/20/06	DFK

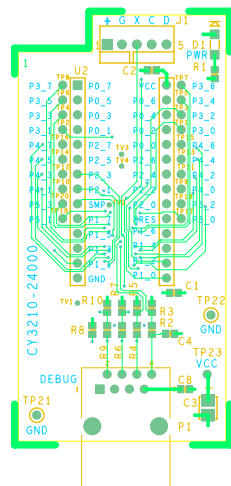
DRILL CHART				
ALL UNITS ARE IN MILS				
FIGURE	SIZE	TOLERANCE	PLATED	QTY
*	10.0	±0.003	PLATED	65
*	20.0	0.003	PLATED	4
*	35.0	0.003	PLATED	36
*	40.0	0.003	PLATED	5
*	43.0	0.003	PLATED	23
○	128.0	0.003	NON-PLATED	2

NOTES: UNLESS OTHERWISE SPECIFIED

- MATERIAL:
 - EPOXY GLASS LAMINATE AND PREPREG, TYPE FR-4.
 - USE HTE COPPER 1/2 OZ., COPPER FOIL EXTERNAL LAYERS AND 1 OZ. COPPER FOIL FOR INTERNAL LAYERS UNLESS OTHERWISE SPECIFIED IN STACK VIEW.
 - OVERALL METAL TO METAL THICKNESS .063 +/- 10%
- DRILLING:
 - DIAMETERS IN DRILL TABLE ARE FINISHED HOLE SIZES +/- .003, UNLESS OTHERWISE SPECIFIED IN DRILL TABLE.
 - TEARDROP ALLOWED ON ENTRY OF VIA ON EVERY TRACE LAYER.
- PLATING:
 - COPPER PLATING IN THRU-HOLES .001 MIN.
- MARKING:
 - SILKSCREEN IN WHITE NON-CONDUCTIVE EPOXY INK ON PRIMARYSIDE OF THE BOARD OR BOTH SIDES IF APPLICABLE.
 - FABRICATOR TO ETCH DATE CODE AND LOGO ON SECONDARY SIDE.
- FINAL FABRICATION:
 - SOLDERMASK PRIMARY AND SECONDARY SIDE OF BOARD USING LIQUID PHOTOIMAGABLE MASK MATERIAL OVER BARE COPPER PER IPC-SM-840. MASK ARTWORKS PROVIDED ARE 1:1 SOLDERMASK COLOR #GREEN#.
- WHEN REQUIRED, COPPER FINISH SHALL BE FINISHED TIN-LEAD (60-40 MIN) HASL.
- BOARDS SHALL BE PURCHASED FROM UL RECOGNIZED VENDORS ONLY AND SHALL BE MARKED IN COPPER ON SECONDARY SIDE OF BOARD WITH VENDORS UL IDENTIFICATION, FLAMABILITY RATING (94-V0), AND DATE CODE (WWYY).
- MANUFACTURE BOARD TO BE IN ACCORDANCE WITH PERFORMANCE STANDARD IPC-6011/6012 CLASS 2 BOARD TO BE INSPECTED PER IPC-600-A CLASS 2.
- MAXIMUM WRAP OR TWIST SHALL NOT EXCEED .010 in/in.

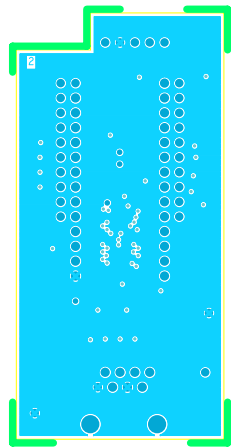


UNLESS OTHERWISE SPECIFIED	SIGNATURES	DATE	12230 World Trade Drive #200 San Diego, CA 92128 (858) 613-7931
DIMENSIONS ARE IN INCHES	DRAWN: ZMK	03/13/04	 FABRICATION DRAWING CY3210-24000 POD MODULE DESIGN
TOLERANCES ON ANGLES +/- .2°	CHECKED: ECU	03/20/04	
2 PL DECIMALS +/- .010	ENGRD: DFK	03/20/04	
3 PL DECIMALS +/- .005	ISSUED		
THIRD ANGLE PROJECTIONS			SIZE: C FROM NO: DWG NO: PDC-9312 REV: **
CYPRESS PROPRIETARY			SCALE: 1/1 SHEET: 1 OF 1
THIS DOCUMENT CONTAINS CONFIDENTIAL, PROPRIETARY INFORMATION THAT IS CYPRESS SEMICONDUCTOR PROPERTY. DO NOT DISCLOSE TO OR REPLICATE FOR OTHERS EXCEPT AS AUTHORIZED BY CYPRESS.			

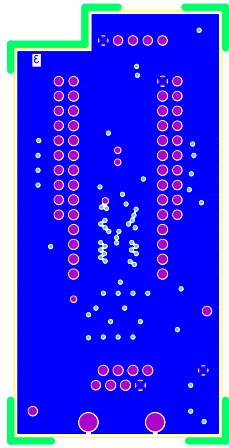


PDC-9312 REV ** PRIMARY SIDE

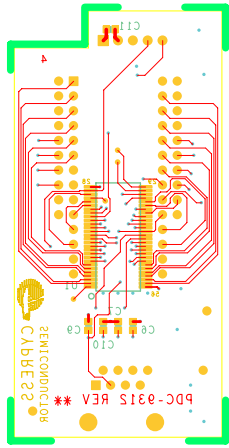
PDC-9312 REV ** PRIMARY SILKSCREEN



PDC-9312 REV** LAYER 2 GND



PDC-9312 REV** LAYER 3 VCC



PDC-0315 REV ** SECONDARY SILKSCREEN
PDC-0315 REV ** SECONDARY SIDE