



All information contained herein applies only to the above listed part number. Other versions of this part number with electrical or mechanical variations are available. Contact CUI Inc. for further assistance. 9615 SW Allen Blvd., Ste. 103, Beaverton OR 97005
800-275-4899 • 503-643-4899 • Fax: 503-643-6129 • www.cui.com

1. CONSTRUCTION:

- 1.1 Surface: Damage, rust, foam not permitted.
- 1.2 Lead pull test: _____ Kg for _____ Seconds.
- 1.3 Impregnation: Varnish.
- 1.4 Lead wire description:

Terminal No.	1	2	3	4	5	6	7	8	9	10
Color										
Length (mm)										
Strip/Tin (mm)	/	/	/	/	/	/	/	/	/	/
Class										

2. ELECTRICAL CHARACTERISTICS:

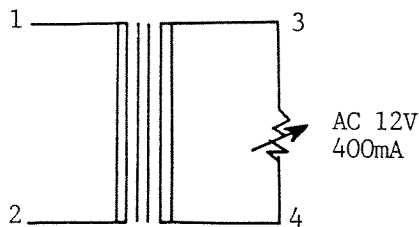
- 2.1 Exciting Current: Input primary 120 V 60 Hz 40 MA MAX.
- 2.2 Primary rated voltage & frequency: 120 V 60 Hz.
- 2.3 Secondary output voltage:

Leads No.or Color	Rated Voltage	Rated Current	Voltage Regulation	No Load Voltage
3-----4	AC 12V±5%	AC 400mA		AC 16.7V±5%

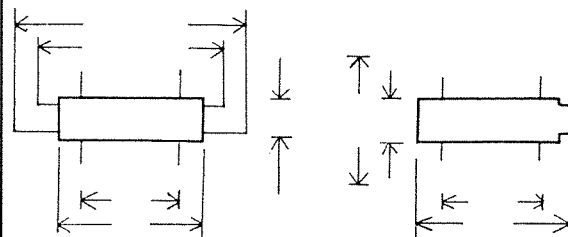
- 2.4 HI-POT test: Input 60HZ 1500 V for one minute between Primary and Secondary and between Primary to Core. 1000 V for one minute between Secondary and Secondary and between Secondary to Core.
- 2.5 Induced Voltage: At Secondary open. input Primary 400HZ 240 V for 15 seconds.
- 2.6 Insulation test: 500Vdc 100 M Ohm Min. between Windinhs and Windings and Core.
- 2.7 Humidity test: Temp. 32 ± 2 °C relative humidity 90%RH for 6 hours, after keeping 30 minutes following insulation must be larger than 5 Megohm.
- 2.8 Temperature rise test: Less than 70 °C for rated test with Resistance method.

3. Adequate Standard:

4. Circuit Diagram:



5. Dimension (mm)



SPEC NO:

PART NO: **DPA120040-S/T-SZ**



CUI INC

PAGE NO: **2 of 3**

UNIT: **mm**

DATE: **01/27/94**

All information contained herein applies only to the above listed part number. Other versions of this part number with electrical or mechanical variations are available. Contact CUI Inc. for further assistance. 9615 SW Allen Blvd., Ste. 103, Beaverton OR 97005
800-275-4899 • 503-643-4899 • Fax: 503-643-6129 • www.cui.com

NO.	PRIMARY			SECONDARY #1				SECONDARY #2				SECONDARY #3			
	Pri.#1	Pri.#2		D.C.R. _____ ohms				D.C.R. _____ ohms				D.C.R. _____ ohms			
	Input Voltage & Frequency	Exciting Current 40 MA MAX	Rated Current MA MAX	No Load		Load 400mA		No Load		Load		No Load		Load	
				VAC	VDC	VAC	VDC	VAC	VDC	VAC	VDC	VAC	VDC	VAC	VDC
16.7V ±5%					12V ±5%										
1	120V/60Hz	16		16.72		12.10									
2		16		16.72		12.12									
3															
4															
5															
6															
7															
8															
9															
10															
11															
12															

SPEC NO:

PART NO: DPA120040-S/T-SZ



CUI INC

PAGE NO: 3 of 3

UNIT: mm

DATE: 01/27/94

All information contained herein applies only to the above listed part number. Other versions of this part number with electrical or mechanical variations are available. Contact CUI Inc. for further assistance. 9615 SW Allen Blvd., Ste. 103, Beaverton OR 97005
800-275-4899 • 503-643-4899 • Fax: 503-643-6129 • www.cui.com

