

► General data



Power supply unit, non-stabilized, filtered acc. to DIN 19240, input 230 V AC, output 24 V DC/2 A

Order number	2942438
Type	CM 90-PS-230AC/24DCU/2

Barcode number	4017918080730
Unit pack	1 Piece
Customs tariff	85044094000

► Technical data

Input data

Nominal input voltage	230 V AC
Frequency range	50 Hz ... 60 Hz
Current consumption	Approx. 330 mA
Nominal power consumption	Approx. 80 VA
Input fuse	IEC 127-2/EN 60 127-2

Output data

Nominal output voltage	24 V DC
Output current	2 A
Ripple factor	< 5 %
Output fuse	IEC 127-2/EN 60 127-2
Protective circuit/component	Varistor, polarity protection, capacitor

General data

Width	90 mm
Height	141 mm
Depth	75 mm
Weight	1.8 kg
Operating voltage display	LED
Operating mode	100% operating factor
Test voltage input/output	4 kV AC
Degree of protection	IP 20
Ambient temperature (operation)	-20 °C ... 60 °C
Installation position	On horizontal DIN rail, venting slits above and below
Assembly instructions	Can be aligned with spacing = 10 mm
Standards/regulations	IEC 664/IEC 664A/DIN VDE 0110-1:1989-01
Standards/regulations	DIN VDE 0551, DIN 19 240

Connection data, input

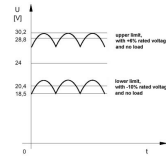
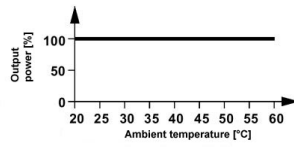
Screw thread	M 2,5
Stripping length	8 mm
Type of connection	Screw connection
Min. conductor cross section AWG/kcmil	24
Conductor cross section AWG/kcmil max	14
Min. conductor cross section, rigid	0.2 mm ²
Conductor cross section, rigid max.	2.5 mm ²
Conductor cross section flexible min.	0.2 mm ²
Max. conductor cross section, flexible	2.5 mm ²

Connection data, output

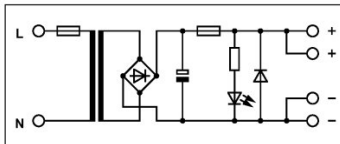
Stripping length	8 mm
Type of connection	Screw connection
Min. conductor cross section AWG/kcmil	24
Conductor cross section AWG/kcmil max	14
Min. conductor cross section, rigid	0.2 mm ²
Conductor cross section, rigid max.	2.5 mm ²
Conductor cross section flexible min.	0.2 mm ²
Max. conductor cross section, flexible	2.5 mm ²

▶ Drawings

Diagram



Circuit diagram



► Address

Phoenix Contact GmbH & Co. KG
Flachsmarktstr. 8
32825 Blomberg
Germany
Tel + 49 - (0) 52 35 - 3-00
Fax + 49 - (0) 52 35 - 3-4 12 00
www.phoenixcontact.com

© Phoenix Contact
Technical modifications reserved