

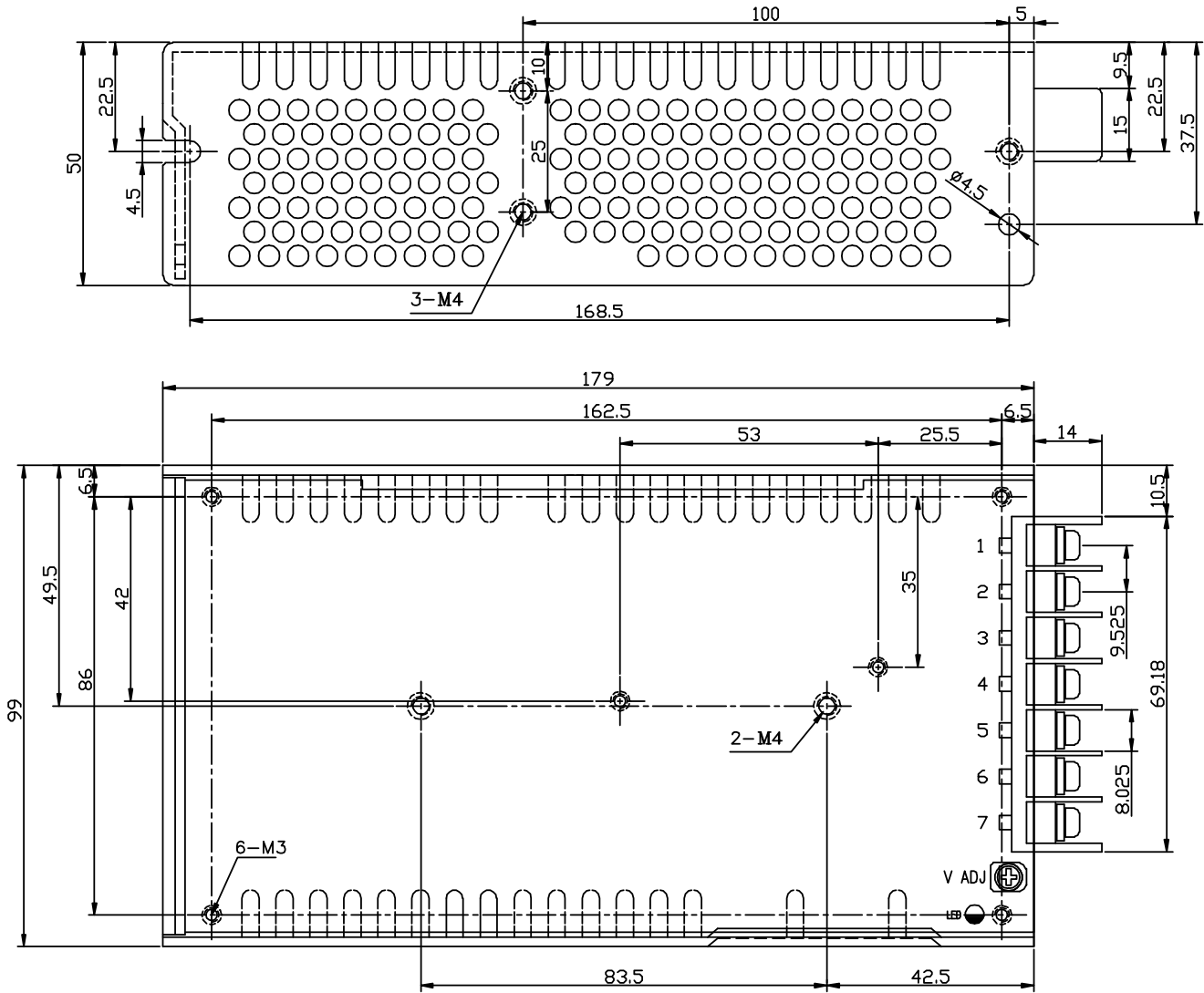
**Features:**

- Universal AC input/ Full range
- Built-in active PFC function, PF>0.93
- High Efficiency, and High Reliability
- Output Protections: OLP/OVP/SCP
- All using 105°C long life electrolytic capacitors.
- 100% full load burn-in test



Model	QPDF-100-5	QPDF-100-12	QPDF-100-15	QPDF-100-24	QPDF-100-48
<b>Output Characteristics</b>					
DC Output	5V	12V	15V	24V	48V
Rated Current	20A	8.5A	6.7A	4.2A	2.15A
Current Range	0~20A	0~8.5A	0~6.7A	0~4.2A	0~2.15A
Ripple and Noise	100mV	100mV	100mV	150mV	250mV
Voltage ADJ. Range	4.0V~5.9V	10V~14V	13.5V~17.0V	20V~28V	43V~55V
Voltage Accuracy	±2.0%	±2.0%	±2.0%	±1.0%	±1.0%
Line Regulation	±0.5%	±0.5%	±0.5%	±0.5%	±0.5%
Load Regulation	±1.0%	±0.5%	±0.5%	±0.5%	±0.5%
Set-up Time	<2.0s (230VAC input, full load)				
Hold-up Time	>20ms (230VAC input, full load)				
Temperature Coefficient	±0.03%/°C				
Overshoot and Undershoot	<5.0%				
<b>Input Characteristics</b>					
Voltage Range	85VAC~264VAC				
Frequency Range	47Hz~63Hz				
Power Factor (Typical)	PF>0.98/115VAC PF>0.93/230VAC				
Efficiency (Typical)	115VAC Input	78%	83%	83%	84%
	230VAC Input	80%	85%	85%	87%
AC Current (max)	1.7A/115VAC 0.8A/230VAC				
Inrush Current (Typical)	50A@230VAC Cold start				
Leakage Current	Input-Output: <0.25mA Input-PG: <3.5mA				
<b>Protection</b>					
Over Load (OLP)	105%~150% of rated output current, hiccup mode, auto recovery				
Over Voltage (OVP)	110%~150% of rated output voltage, shut down, re-power on to recover				
Short Circuit (SCP)	Long-term mode, auto recovery				
<b>Environmental Characteristics</b>					
Operating Amb. Temp. & Hum	-10°C~60°C; 20%~90% RH Non-Condensing				
Storage Temp. & Hum	-20°C~85°C; 10%~95% RH Non-Condensing				
Safety Standards	UL60950-1; EN60950-1: 2006				
Withstand Voltage	Primary-Secondary: 3.0KVAC;≤10mA. Primary-PG: 1.5KVAC;≤10mA. Secondary-PG: 0.5KVDC;≤10mA				
Isolation Resistance	≥100M ohms				
EMI Conduction & Radiation	Compliance to EN55022(CISPR22) Class B				
Harmonic Current	Compliance to EN61000-3-2, 17625.1-2003				
EMS Immunity	Compliance to EN61000-4-2, 3, 4, 5, 6, 8, 11; ENV50204, light industry level, criteria A				
<b>General Characteristics</b>					
MTBF (MIL-HDBK-217F)	More than 100,000Hrs (25°C, Full load)				
Dimension (LxWxH)	194x99x50mm				
Packing	20PCS/CTN. G.W: 15.2kgs				
Cooling Method	Cooling by free air convection				

## MECHANICAL SPECIFICATIONS



Pin No.	Assignment
1	AC-L
2	AC-N
3	F.G
4,5	DC output -V
6,7	DC output +V

**UNIT: mm**