

## Model

# AAD600S

600 Watts<sub>max</sub> output power

Power Factor Correction

Single Output

Switch Mode Power Supply

**H.A.L.T.** Highly Accelerated Life Testing  
TESTED

### Electrical Specifications

Input Voltage:	85-264 VAC, 47-63 Hz
Input Current:	<6.5A RMS @ 115 VAC @ full load <3.5A RMS @ 230 VAC @ full load 9.0A RMS @ 85 VAC @ full load
Inrush Current:	<20A, pk @ 110 VAC, active soft start <40A, pk @ 220 VAC, active soft start (Active independent of cold or warm start)
Power Factor:	>0.99 @ full load @ 230VAC input
Harmonic Distortion:	Meets IEC1000-3-2
EMI Filtering:	Meets CISPR 11 and 22 and FCC Part 15 Class B (conducted)
Input Protection:	Internal AC line fuse; 250 VAC, 10A
Surge Withstand:	Meets EN61000-4-4 Level 3 and EN61000-4-5 Level 3
Output Power:	Up to 600W continuous
Line Regulation:	± 0.1%
Load Regulation:	±0.25%
PARD:	<1% or 250mV 20MHz bandwidth
Hold-up Time:	>16 ms @ full load
Output Polarity:	Output is floating
Minimum Load:	None
Transient Response:	2% for 25% load change @ 1A/μs
Output Rise Time:	<100 ms (10% to 90%)
Remote Sense:	Standard
Current Share:	Within 5%
Remote On/Off:	Ground or TTL <sub>LOW</sub> = OFF Open or TTL <sub>HIGH</sub> = ON



AC Power Fail:	TTL <sub>LOW</sub> logic "0" at least 2 ms before DC output drops 5% (without signal jitter). Open collector.
DC OK:	Open collector when output voltage is above 95% of rated
Overcurrent/Short Circuit:	Square current limit; 105-130% of rated
Overvoltage Protection:	Factory set, 125% ±5% cycle AC to reset
Reverse Voltage:	Reverse current up to rated outputs
Thermal Protection:	Auto off; auto reset upon cool down
Efficiency:	Up to 92%
MTBF:	MIL-STD-HDBK 217E 200,000 hours @ 25°C, ground benign, Highly Accelerated Life Testing

### Available Voltage Outputs\*

Voltage Codes	Voltages (Volts)	Continuous Current (Amps)
<b>-4</b>	<b>12</b>	<b>42</b>
-5	15	36
<b>-6</b>	<b>24</b>	<b>23</b>
-7	28	20
-8	36	16
<b>-9</b>	<b>48</b>	<b>12.5</b>

\* Consult factory for other voltages and OEM quantities.

Note: Standard models are shown **bold**

### PART # STRUCTURE:

**MODEL** - **VOLTAGE CODE** - **OPTION CODES** (See sheet 2)

**AAD600S** - **X** - **ABC....**

Example: Part Number **AAD600S-8-CF** = 600W Power Factor Corrected, 36V @ 16A with sealed pots and overcurrent foldback mode.

[CLICK HERE TO SEE THE AAD600S CODE TABLE AND AVAILABLE OPTIONS.](#)

## Model

# AAD600S



## Options (code)

DC OK Invert (U)      PF Invert (B)  
Metric Mounting (M)      Remote On/Off Invert (S)  
OR-ing Diodes (O)      Overcurrent Hiccup Mode (D)  
Droop Current Share (A)      Overcurrent Latch-off Mode (E)  
Gold Plated Signal Connector (G)      Overcurrent Foldback Mode (F)  
Sealed Pots (C)      Standby Power (5VDC @ 1A) (P)\*\*

\*\*Voltage available as long as AC input is present

## Certifications

NRTL\*\*\* to UL60950-1, CSA C22.2 60950-1-03  
BAUART Certification to EN60950-1  
CB Test Report in Accordance with IEC60950-1  
CE Declaration to Low Voltage Directive 72/73/EEC

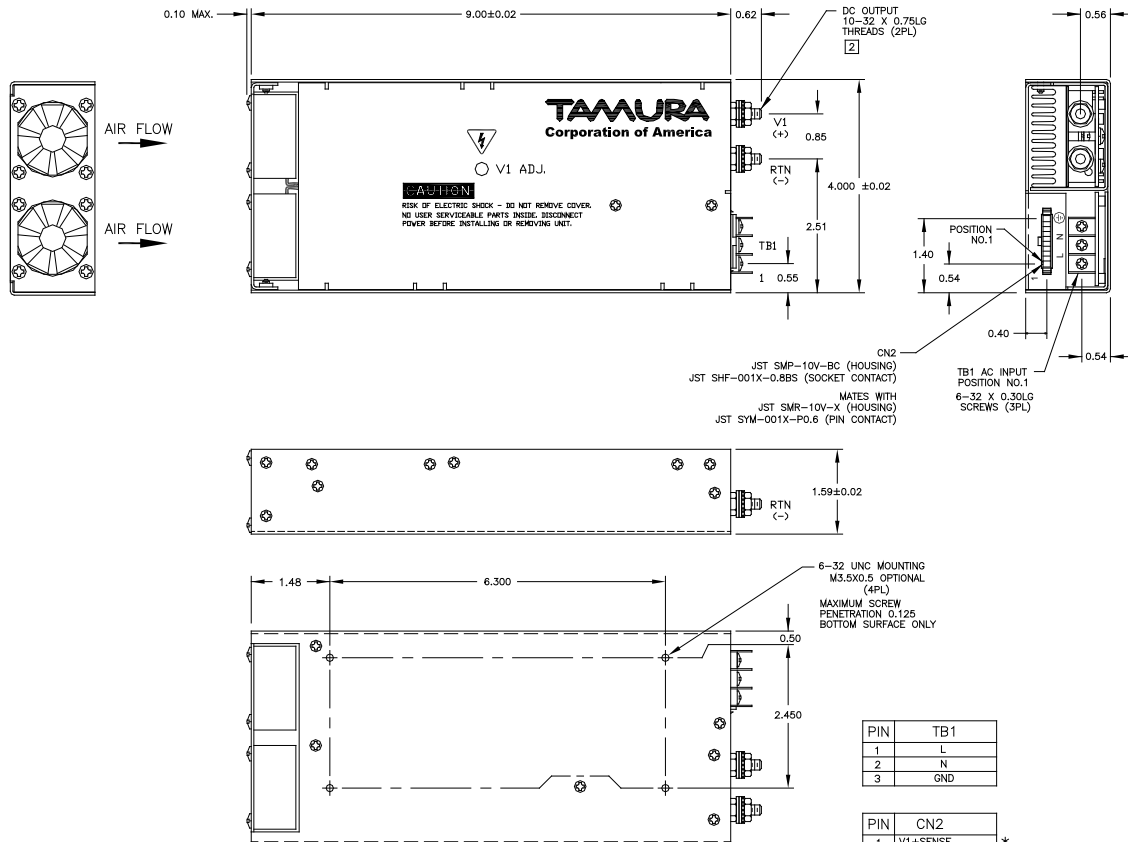
\*\*\* Nationally Recognized Test Laboratory

## Compliance

EN61000-4-5 Level 3      EN61000-4-2 Level 2  
EN61000-3-2      EN61000-4-2 Level 3 (Air Only)  
EN61000-4-4 Level 3      EN61000-4-11  
CISPR 11 and 22 FCC Part 15 Class B (conducted)

## Physical Specifications

Dimensions: (HxWxL)      1.59" x 4" x 9"  
Operating Temp:      0 to 70°C; rated power to 50°C  
derate linearly to 50% at 70°C.  
Relative Humidity:      5% to 90%, non-condensing  
Storage:      -50 to 85°C/20-90% RH  
Altitude:      6,561' operating;  
40,000' storage



\* WARNING: DAMAGE WILL OCCUR IF REMOTE SENSE LEADS (CN2-1 & CN2-2) ARE REVERSED OR USED WITH LOAD DISCONNECTED FROM OUTPUT (V1).

3. DO NOT EXCEED 30 INCH-LBS (MAX TORQUE) WHEN TIGHTENING TOP NUTS ON OUTPUT STUDS.

[2] DO NOT EXCEED 30 INCH-LBS (MAX TORQUE) WHEN TIGHTENING TOP NUTS ON OUTPUT STUDS.

1. FOR CLARITY NOT ALL ITEMS ARE SHOWN IN EACH VIEW.

© Copyright 2006 TAMURA CORPORATION OF AMERICA. Specifications subject to change without notice.



TAMURA CORPORATION OF AMERICA  
43352 Business Park Drive, Temecula, CA 92590-6624  
(951) 699-1270 / Fax: (951) 676-9482  
(800) 472-6624      www.tamuracorp.com



FM 32227