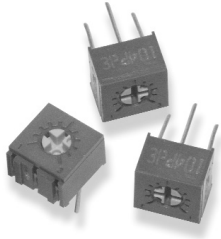


## Type 4275 Series

### Type 4275 Series



A tiny, fully sealed, professional trimmer offered with a range of pin configurations. The 4275 is available with top or side adjustment. Standard packaging is in tough plastic tubes. The cermet element is very stable and has good setability.

A high quality modern trimmer at an attractive price. The product is designed for use in small size professional equipments and boasts performance well beyond its price.

### Key Features

- High Resolution Stable Cermet Element
- Only 6mm Square
- Vertical or Horizontal Adjustment
- 0.5 Watt Rating at 70°C
- Choice of Pin Configuration
- Rugged Construction
- Flame Retardant
- Supplied in Firm Plastic Tubes

### Characteristics - Electrical

Resistance Range:	100R to 2M
Resistance Values:	1, 2 and 5 in each decade
Resistance Tolerance:	10%
End Resistance:	10 ohms or 1% whichever is greater
Power Rating:	0.5W at 70°C derating to zero at 125°C
Isolation Voltage:	300 V dc or ac peak
Limiting Element Voltage:	220 V dc or ac RMS, maximum
Insulation Resistance:	1000 M at 500 V dc, minimum
Rotational Noise (CRV):	3 Ohms or 2%, whichever is greater
Electrical Adjustment:	1 turn - 240° Nominal
Temperature Coefficient:	± 250ppm/°C

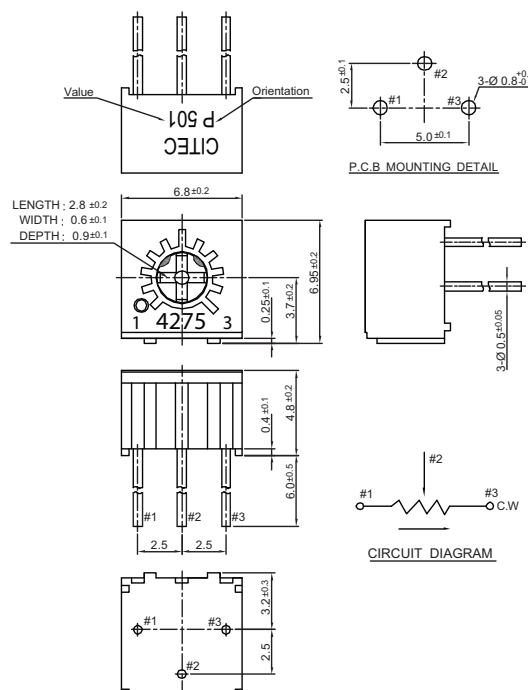
### Characteristics - Mechanical

End Stop:	40 mNm, minimum
Starting Torque:	30 mNm, maximum
Mechanical Adjustment:	1 turn - 260° Nominal
Weight:	0.6 gm Nominal

### Characteristics - Environmental

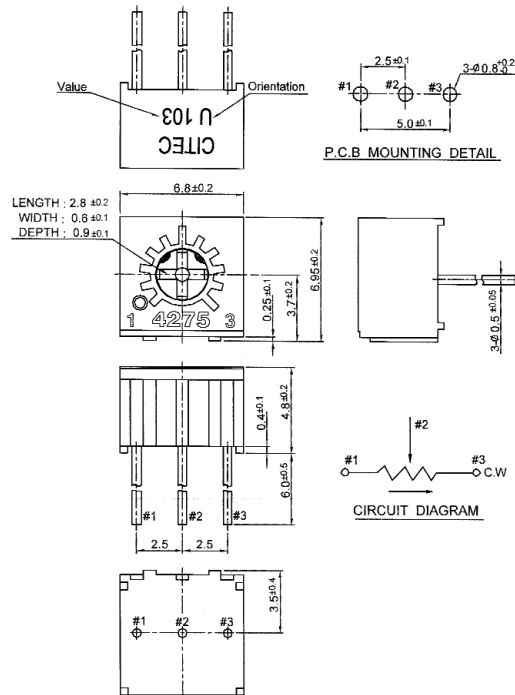
Temperature Range:	-55°C to +125°C
Temperature Storage:	250 hrs. at 125°C
Thermal Shock:	5 cycles -55°C to 125°C
Bump Severity:	4000 bumps 40G
Vibration Severity:	10 - 500 Hz, 30G
Rotational Life:	200 cycles, minimum
Load Life at 70°C:	ΔR <3% after 1000 hours.
Sealing:	Sealed for board washing
Soldering Heat:	5 seconds at 350°C
Climatic Category:	55/125/21

### Dimensions 4275P

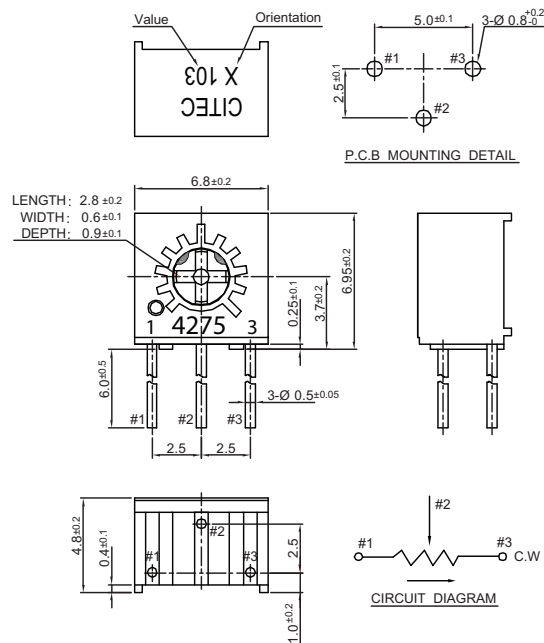


**Type 4275 Series**

**Dimensions  
4275U**

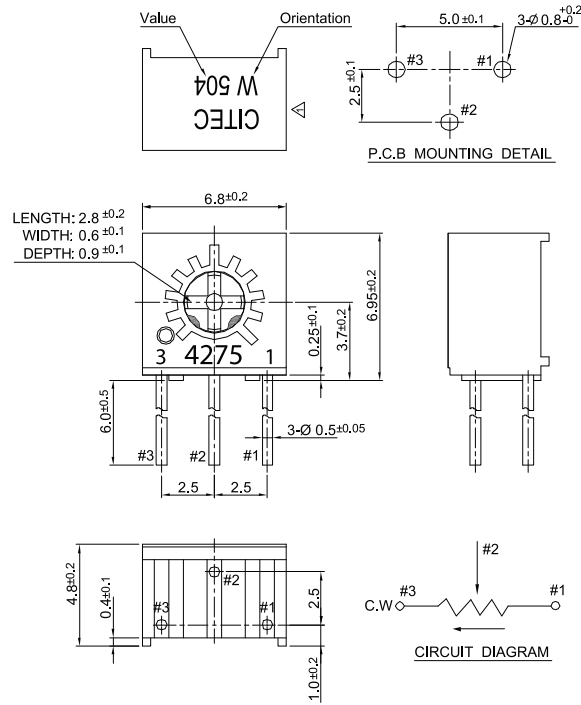


**4275X**



## Type 4275 Series

### Dimensions 4275W



### How to Order

4275	P	104	K
<b>Common Part</b>	<b>Pin/Adjust Style</b>	<b>Resistance Value</b>	<b>Tolerance</b>
4275	P - Top Adjust X - Side Adjust U - Top Adjust Inline W - Side Adjust Rev.	The first two digits are significant figures of resistance value and the third denotes the number of zeros following.  e.g. 100R: 101 1K0: 102 10K: 103 100K: 104	K - 10 %