

4

3

2

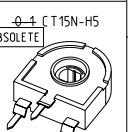
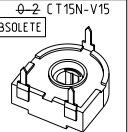
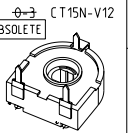
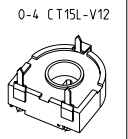
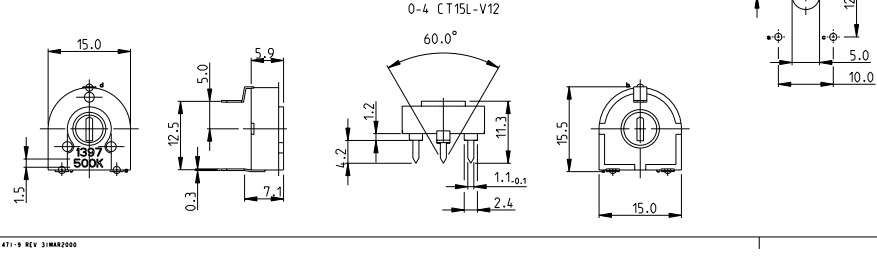
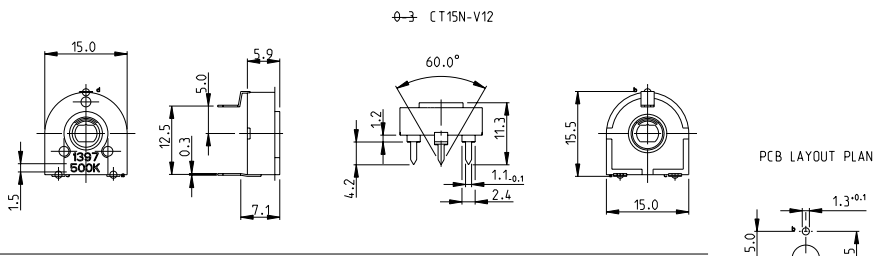
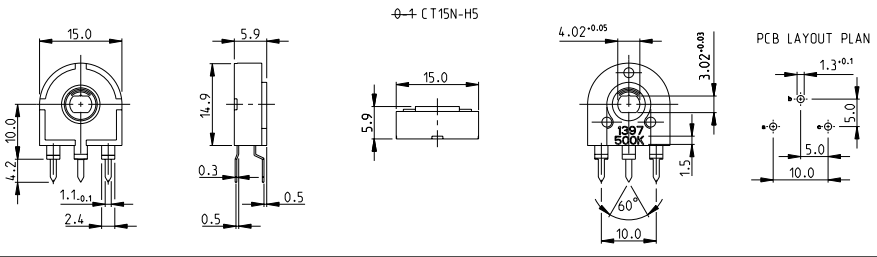
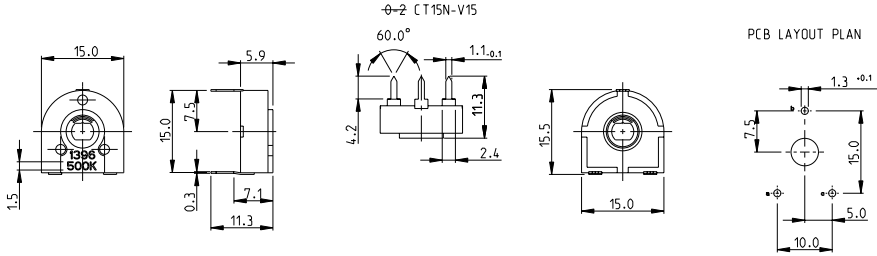
1

THIS DRAWING IS UNPUBLISHED. RELEASED FOR PUBLICATION. 2008
 BY TYCO ELECTRONICS CORPORATION. ALL RIGHTS RESERVED.

LOC	DIST	REVISIONS			
P	LYR	DESCRIPTION	DATE	DWN	APPROV
BA1	ECR-10-016475		25AUG2010	KK	HMR

FOR FURTHER INFORMATION SEE DATA SHEET FOR
 CB15 & CT15 SERIES-CARBON ECONOMY TRIMMERS

RoHS Compliant



DIMENSIONS:		OPERATING SPECIFICATIONS:		PRODUCT SPEC.	
mm		0 PLC	±0.2	APPLICATION SPEC	
		1 PLC	±0.1	WEIGHT	
		2 PLC	±	CUSTOMER DRAWING	
		3 PLC	±	SCALE	
		4 PLC	±	SHEET	
		ANGLES	±5°	REV	
		T/WISH	±	BA1	

DESIGNED BY	SUBHASHAN	DATE	07-NOV-08	Tyco Electronics Dorcan, Swindon, SN3 5SH	
CHECKED BY	PRAKASH S	DATE	07-NOV-08		
APPROVED BY	STEPHEN P	DATE	07-NOV-08		
PRODUCT NAME			CARBON ECONOMY TRIMMERS SERIES CT15		
SIZE	A2	CAGE CODE	00779	DRAWING NO.	1879403
RESTRICTED TO					