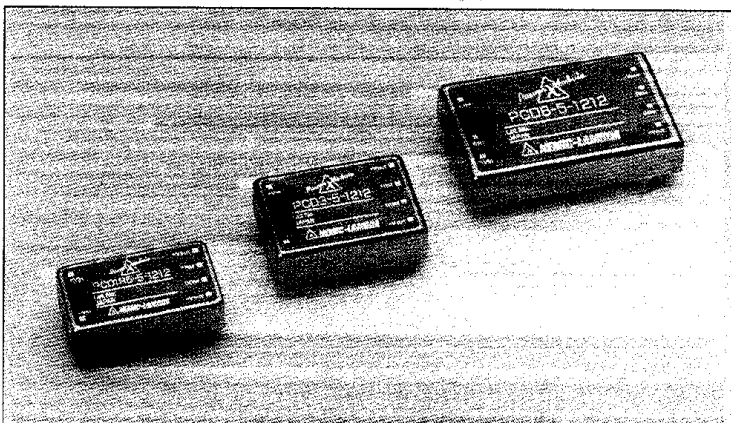


PCD-SERIES

Dual output DC-DC converter 1.5W ~ 6W

LAMBDA
DENSEI-LAMBDA



Model name

PCD 6 - 24 - 1212

Series name Output power Input voltage Output voltage

Features

- Input/Output isolation
- 5 dimensions shield metal case
- Over current protection
- Adjustable output voltage
- Remote ON/OFF control (6W type)

PCD1R5 (1.5W type) Specifications

Model	PCD1R5-5-1212		PCD1R5-12-1212		PCD1R5-24-1212		PCD1R5-48-1212		
Input Voltage	Vdc	5VDC (4.5 ~ 9.0V)		12VDC (9 ~ 18V)		24VDC (18 ~ 36V)		48VDC (36 ~ 72V)	
Output Voltage (*1)	Vdc	±12V±5%	±15V±5%	±12V±5%	±15V±5%	±12V±5%	±15V±5%	±12V±5%	±15V±5%
Output Current	mA	0 ~ ±60	0 ~ ±50	0 ~ ±60	0 ~ ±50	0 ~ ±60	0 ~ ±50	0 ~ ±60	0 ~ ±50
Output Power (max)	W	1.44	1.5	1.44	1.5	1.44	1.5	1.44	1.5
Efficiency (typ) (*2)	%	69	67	73	73	75	75	75	75

PCD3 (3W type) Specifications

Model	PCD3-5-1212		PCD3-12-1212		PCD3-24-1212		PCD3-48-1212		
Input Voltage	Vdc	5VDC (4.5 ~ 9.0V)		12VDC (9 ~ 18V)		24VDC (18 ~ 36V)		48VDC (36 ~ 72V)	
Output Voltage (*1)	Vdc	±12V±5%	±15V±5%	±12V±5%	±15V±5%	±12V±5%	±15V±5%	±12V±5%	±15V±5%
Output Current	mA	0 ~ ±125	0 ~ ±100	0 ~ ±125	0 ~ ±100	0 ~ ±125	0 ~ ±100	0 ~ ±125	0 ~ ±100
Output Power (max)	W	3.0	3.0	3.0	3.0	3.0	3.0	3.0	3.0
Efficiency (typ) (*2)	%	72	72	77	77	78	78	78	77

PCD6 (6W type) Specifications

Model	PCD6-5-1212		PCD6-12-1212		PCD6-24-1212		PCD6-48-1212		
Input Voltage	Vdc	5VDC (4.5 ~ 9.0V)		12VDC (9 ~ 18V)		24VDC (18 ~ 36V)		48VDC (36 ~ 72V)	
Output Voltage (*1)	Vdc	±12V±5%	±15V±5%	±12V±5%	±15V±5%	±12V±5%	±15V±5%	±12V±5%	±15V±5%
Output Current	mA	0 ~ ±250	0 ~ ±200	0 ~ ±250	0 ~ ±200	0 ~ ±250	0 ~ ±200	0 ~ ±250	0 ~ ±200
Output Power (max)	W	6.0	6.0	6.0	6.0	6.0	6.0	6.0	6.0
Efficiency (typ) (*2)	%	75	75	82	82	84	84	82	82

Common specifications

Withstand Voltage	Input to Output: 500VAC for 1 minute
Cooling	Convection cooling
Operating Temperature	-20 ~ +70°C (-20 ~ +50°C: 100%, +60°C: 70%, 40%)
Over Current Protection	Output current limiting, automatic recovery. Avoid to operate overload or dead short for more than 30 seconds.
Input Protection	Built in fuse on input line

(*1) Output voltage accuracy includes line and load regulation and temperature drift.

(*2) At rated input voltage & maximum output power.

On-Board Type Power Supply

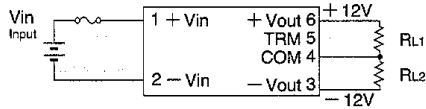
Terminal connection

[PCD1R5 (1.5W type) / PCD3 (3W type)]

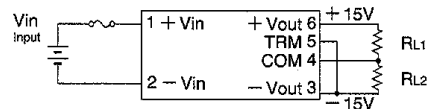
Output voltage can be adjusted by TRM terminals.

Output power must be within the rating, when increasing the output voltage.

*1 TRM terminal: Open
Output: $\pm 12V$

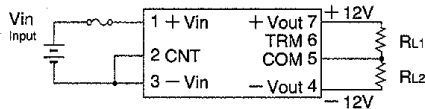


*2 TRM terminal & -Vout terminal: Short
Output: $\pm 15V$

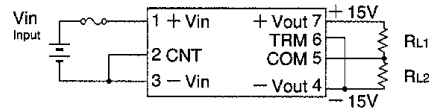


[PCD6 (6W type)]

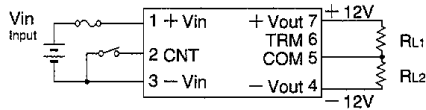
*1 TRM terminal: Open
Output: $\pm 12V$



*2 TRM terminal & -Vout terminal: Short
Output: $\pm 15V$



CNT terminal: Remote ON/OFF control



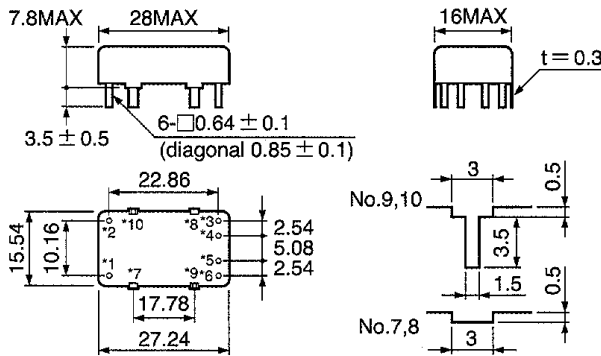
CNT terminal	Output
CNT--Vin: Short or 0 ~ 0.4V	ON
CNT--Vin: Open or 2V ~ Vin	OFF

* Output voltage: Refer to TRM terminal connection

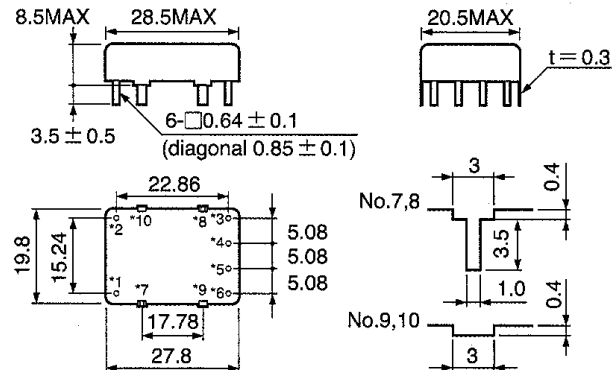
On-Board Type Power Supply

Outline drawing

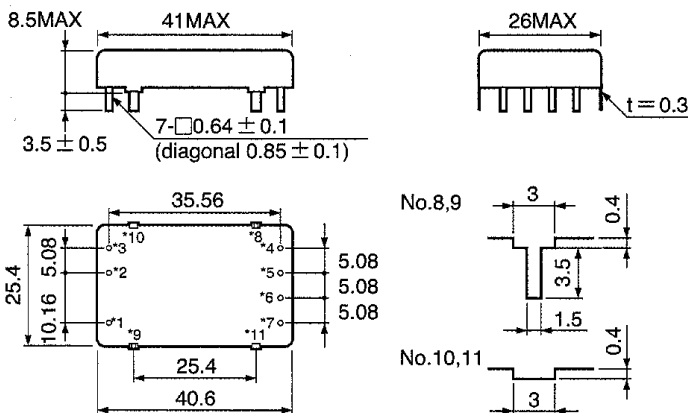
• PCD1R5 (1.5W type)



• PCD3 (3W type)



• PCD6 (6W type)



(Unit: mm)
Dimension tolerance not designated is ± 0.3 .