

Features

- Carbon element
- 10-30 mm travel
- Center detent option
- Single or dual gang
- RoHS compliant*

Applications

- Audio/TV sets
- Car radio
- Amplifiers/mixers/drum machines/synthesizers
- PCs/monitors
- Appliances

PDV Series - Open Frame Slide Potentiometer

Electrical Characteristics

Taper..... Linear, audio
 Standard Resistance Range
 1 K ohms to 1 M ohms
 Standard Resistance Tolerance..... ±20 %
 Residual Resistance
 100 ohms or ±5 % max.

Environmental Characteristics

Operating Temperature... -10 °C to +50 °C
 Power Rating
 Linear 0.1 watt
 Audio 0.05 watt
 Maximum Operating Voltage - Linear
 10 mm Travel..... 100 VAC
 15 mm Travel..... 100 VAC
 20 mm Travel..... 200 VAC
 30 mm Travel..... 200 VAC
 Maximum Operating Voltage - Audio
 10 mm Travel..... 50 VAC
 15 mm Travel..... 50 VAC
 20 mm Travel..... 150 VAC
 30 mm Travel..... 150 VAC
 Sliding Noise 47 mV max.

Mechanical Characteristics

Operating Force 20 to 300 g-cm
 Detent Torque 50 to 400 g-cm
 Lever Stop Strength 3 kg-cm min.
 Sliding Life..... 10,000 cycles
 Std. Stroke Length 10, 15, 20, 30 mm
 Soldering Condition
 Wave 260 °C for 3 sec. max.
 Manual..... Not recommended

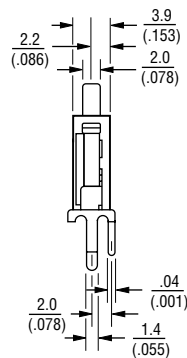
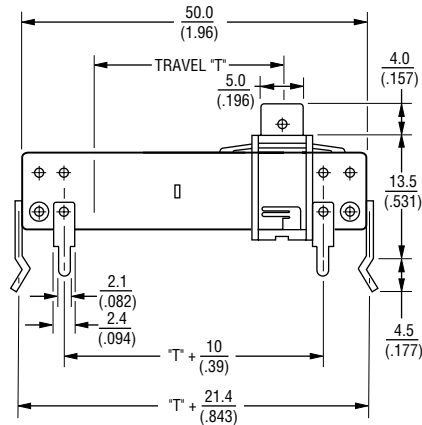
How To Order

PDV 10 - 2 1 P - 102 A

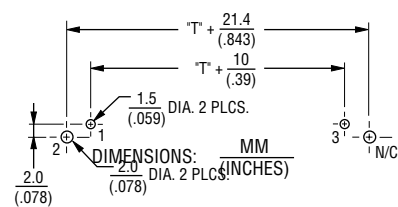
Model _____
 Length of Travel
 • 10 = 10 mm
 • 15 = 15 mm
 • 20 = 20 mm
 • 30 = 30 mm
 Detent Option
 • 2 = No Detent
 • 3 = Center Detent
 Number of Gangs
 • 1 = Single Gang
 • 2 = Dual Gang
 Mounting Type
 (refer to drawings)
 • A = Vertical Pins
 • D = Vertical Pins
 • P = Vertical Pins
 • H = Horizontal Pins
 • M = Horizontal Pins
 • B = Horizontal Pins
 Resistance Code (See Table) _____
 Resistance Taper
 • A = Audio Taper
 • B = Linear Taper
 Other styles available.

Product Dimensions

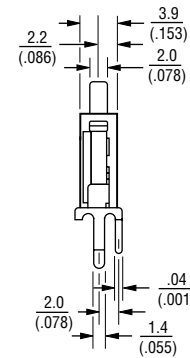
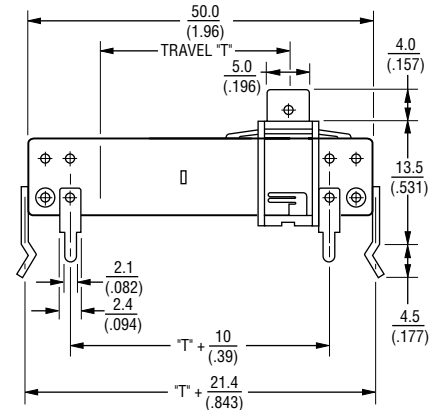
PDVxx-x1D



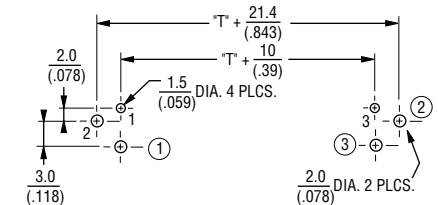
RECOMMENDED PCB LAYOUT



PDVxx-x2D

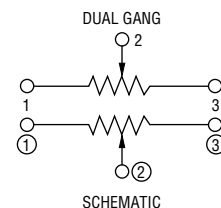
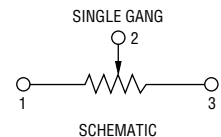


RECOMMENDED PCB LAYOUT



Standard Resistance Table

Resistance (Ohms)	Resistance Code
1,000	102
2,000	202
5,000	502
10,000	103
20,000	203
50,000	503
100,000	104
200,000	204
500,000	504
1,000,000	105



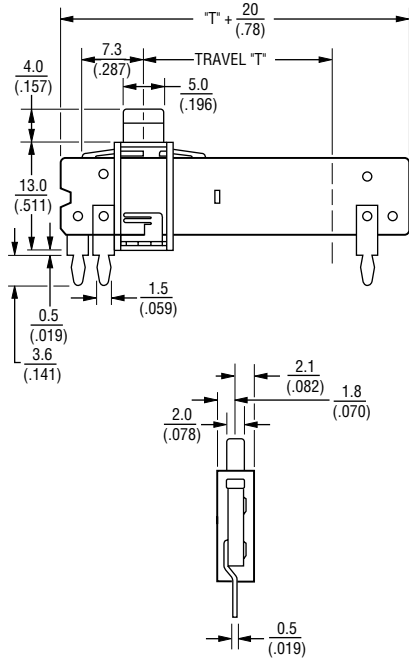
*RoHS Directive 2002/95/EC Jan 27, 2003 including Annex Specifications are subject to change without notice. Customers should verify actual device performance in their specific applications.

PDV Series - Open Frame Slide Potentiometer

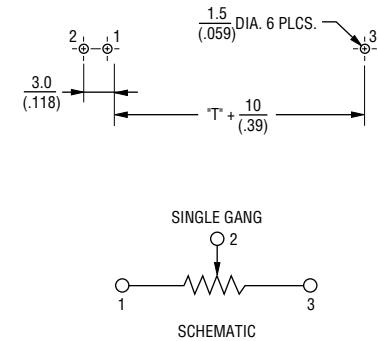
BOURNS®

Product Dimensions

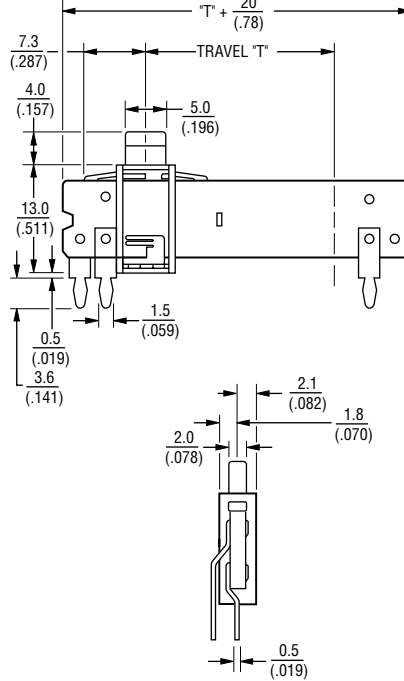
PDVxx-x1P



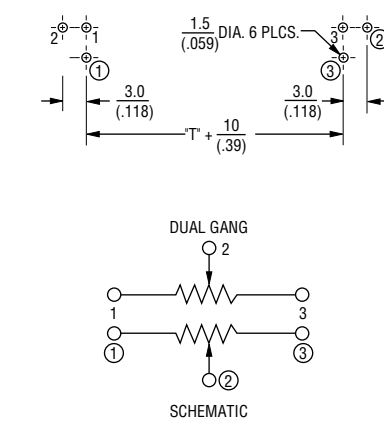
RECOMMENDED PCB LAYOUT



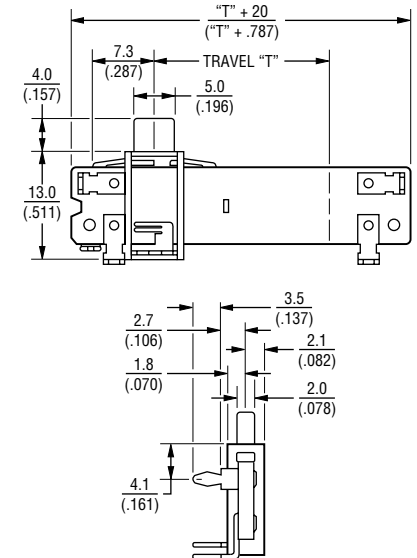
PDVxx-x2P



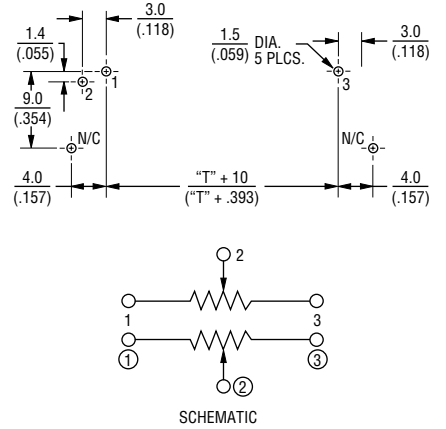
RECOMMENDED PCB LAYOUT



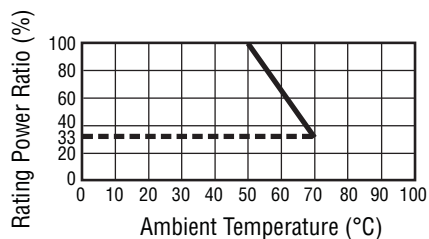
PDVxx-x1H



RECOMMENDED PCB LAYOUT



Derating Curve



DIMENSIONS: $\frac{\text{MM}}{\text{(INCHES)}}$

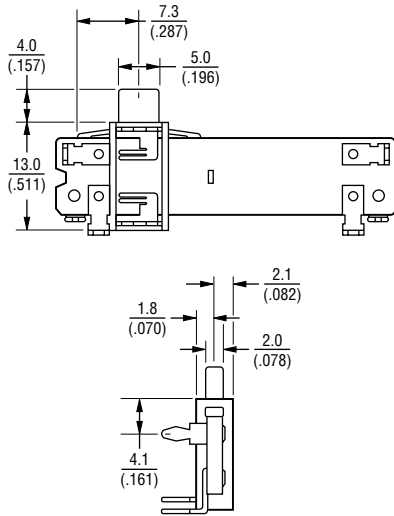
Specifications are subject to change without notice. Customers should verify actual device performance in their specific applications.

PDV Series - Open Frame Slide Potentiometer

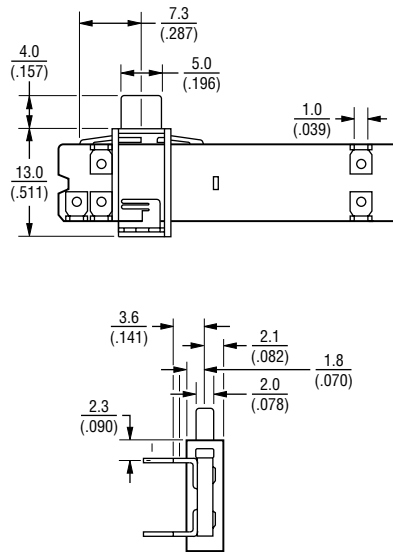
BOURNS®

Product Dimensions

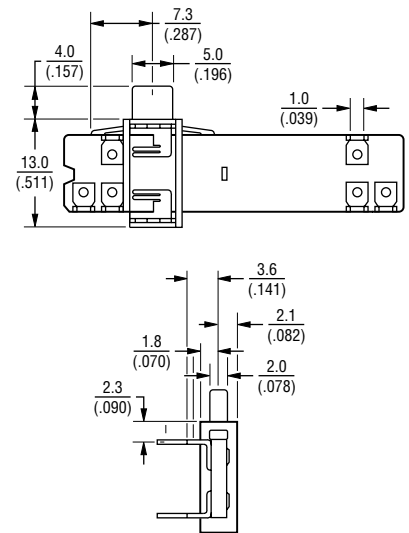
PDVxx-x2H



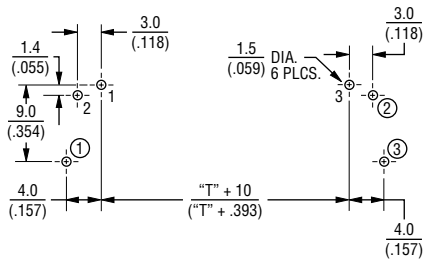
PDVxx-x1M



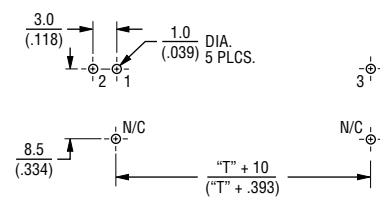
PDVxx-x2M



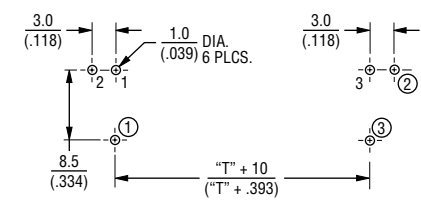
RECOMMENDED PCB LAYOUT



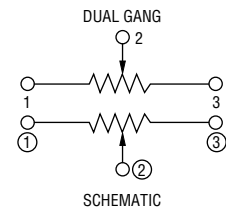
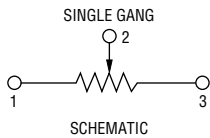
RECOMMENDED PCB LAYOUT



RECOMMENDED PCB LAYOUT



DIMENSIONS: $\frac{\text{MM}}{\text{INCHES}}$



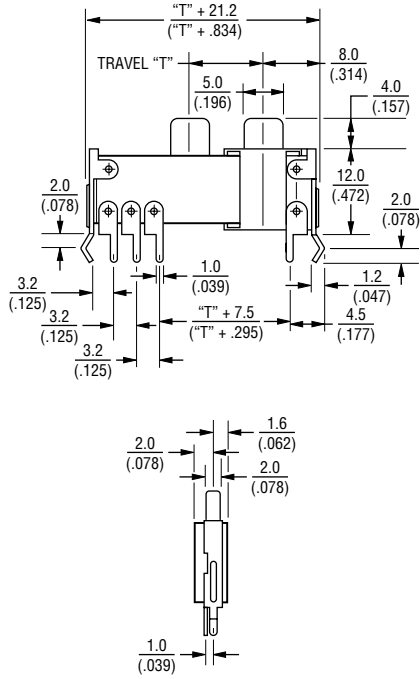
Specifications are subject to change without notice.
Customers should verify actual device performance in their specific applications.

PDV Series - Open Frame Slide Potentiometer

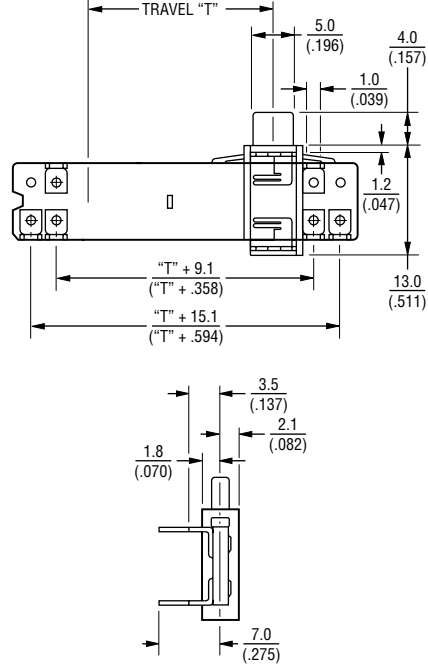
BOURNS®

Product Dimensions

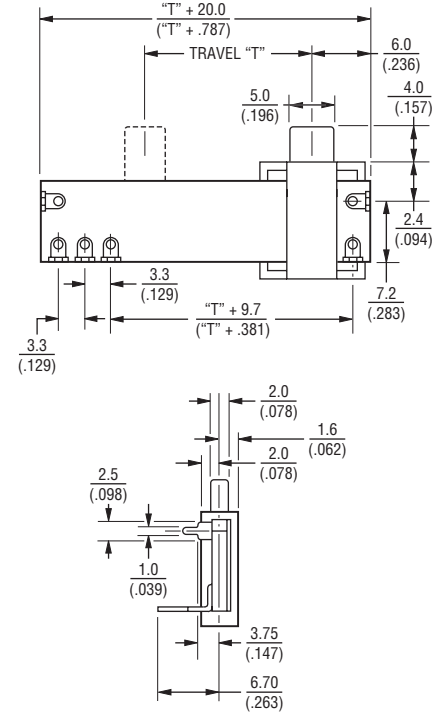
PDVxx-x2A



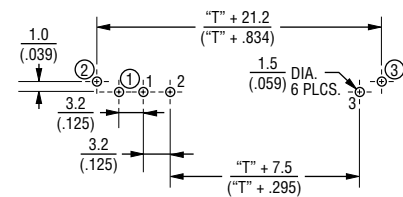
PDVxx-x2B



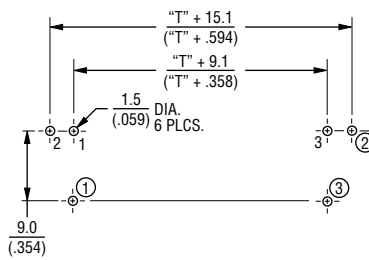
PDVxx-x2C



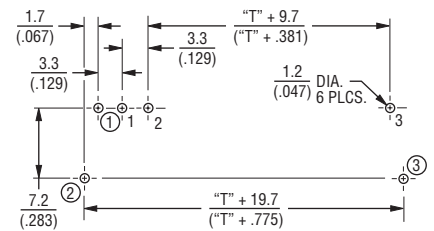
RECOMMENDED PCB LAYOUT



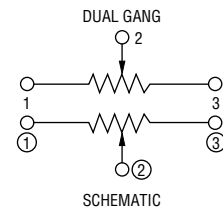
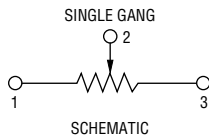
RECOMMENDED PCB LAYOUT



RECOMMENDED PCB LAYOUT



DIMENSIONS: $\frac{\text{MM}}{\text{(INCHES)}}$



REV. 09/10

Specifications are subject to change without notice. Customers should verify actual device performance in their specific applications.