

4

3

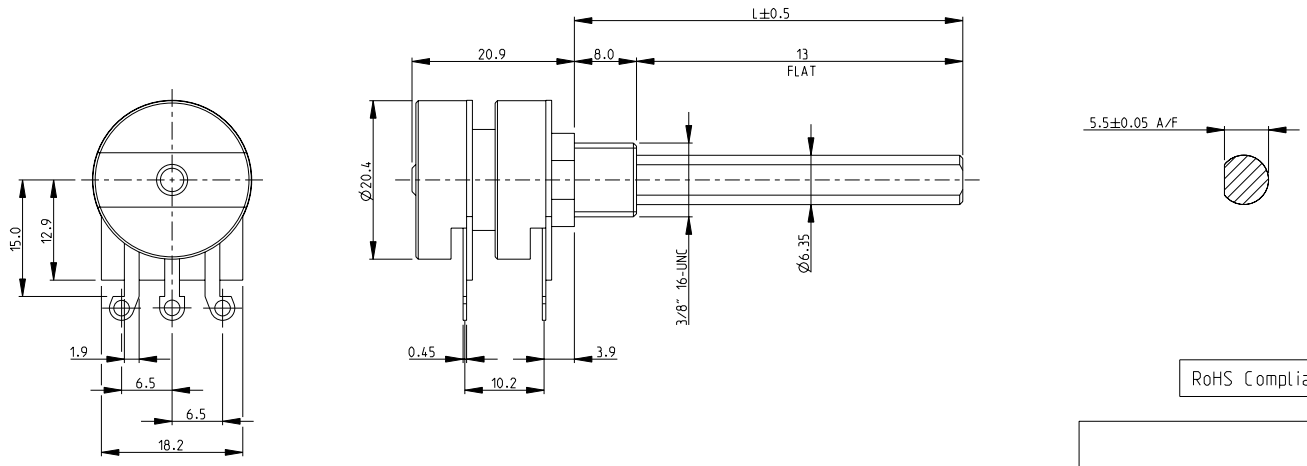
2

1

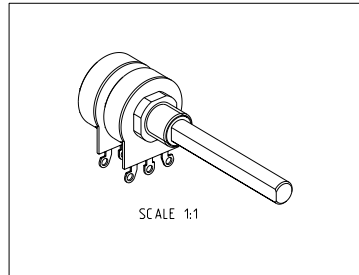
THIS DRAWING IS UNPUBLISHED. RELEASED FOR PUBLICATION 2008
 © COPYRIGHT 2008 BY TYCO ELECTRONICS CORPORATION. ALL RIGHTS RESERVED.

LOC	DIST	REVISIONS			
P	LTR	DESCRIPTION	DATE	DWN	APVD
E	B				
	BA	NEW RELEASE	30-Jul-08	SM	ST.P

- 1 AVAILABLE IN DIFFERENT SHAFT LENGTHS (L) SEE DATA SHEET
- 2 FOR FURTHER INFORMATION SEE DATA SHEET FOR 23 SERIES-SPINDLE OPERATED POTENTIOMETER



RoHS Compliant



SCALE 1:1

DIMENSIONS:		TOLERANCES UNLESS OTHERWISE SPECIFIED:		OWN	30-Jul-08	Tyco Electronics Corporation	
mm		0 PLC	± 0.5	CHK	30-Jul-08	Dorcan, Swindon, SN3 5HH	
		1 PLC	± 0.2	PRAKASH.S			
		2 PLC	± 0.1	APVD	30-Jul-08		
		3 PLC	\pm	STEPHEN.P			
		4 PLC	\pm				
		ANGLES	$\pm 5^\circ$				
MATERIAL	-	FINISH	-				
				NAME	SPINDLE OPERATED POTENTIOMETER SERIES 23 (DUAL GANG STYLE)		
				PRODUCT SPEC			
				APPLICATION SPEC			
				SIZE	CAGE CODE	DRAWING NO	RESTRICTED TO
				WEIGHT	A3	00779	©=1624182
				CUSTOMER DRAWING	SCALE	2:1	SHEET 1 OF 1 REV BA

AMP 1470-19 REV 31MAR2000

Pro/ENGINEER DRAWING