

4

3

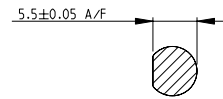
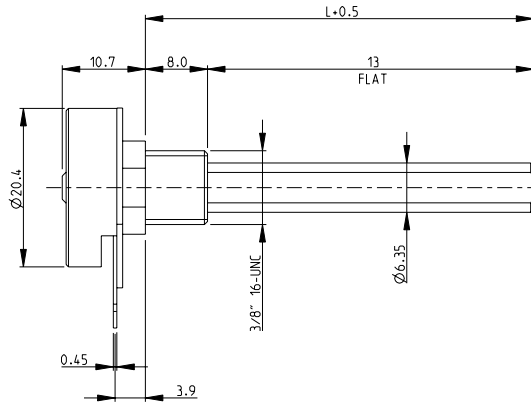
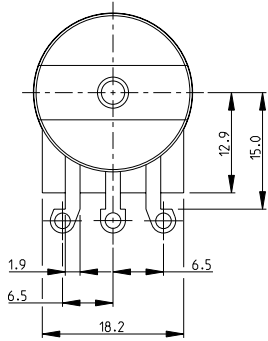
2

1

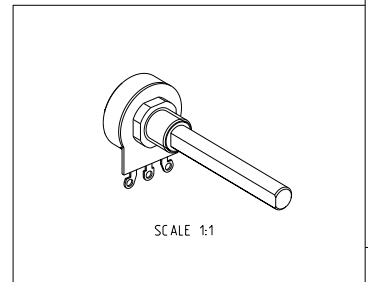
THIS DRAWING IS UNPUBLISHED. RELEASED FOR PUBLICATION 2008  
 © COPYRIGHT 2008 BY TYCO ELECTRONICS CORPORATION. ALL RIGHTS RESERVED.

| LOC |     | DIST        |             | REVISIONS |     |      |  |
|-----|-----|-------------|-------------|-----------|-----|------|--|
| P   | LTR | DESCRIPTION |             | DATE      | DNW | APVD |  |
| E   | B   | BA          | NEW RELEASE | 30-Jul-08 | SM  | ST.P |  |

1 AVAILABLE IN DIFFERENT SHAFT LENGTHS (L) SEE DATA SHEET  
 2 FOR FURTHER INFORMATION SEE DATA SHEET FOR  
 23 SERIES-SPINDLE OPERATED POTENTIOMETER



RoHS Compliant



|   |   |  |  |
|---|---|--|--|
| <small>THIS DRAWING IS A CONTROLLED DOCUMENT FOR TYCO ELECTRONICS CORPORATION<br/>         IT IS SUBJECT TO CHANGE AND THE CONTROLLING ENGINEERING ORGANIZATION<br/>         SHOULD BE CONTACTED FOR THE LATEST REVISION.</small> |   | DWN SUBHASH.M 30-Jul-08<br>CHK PRAKASH.S 30-Jul-08<br>APVD STEPHEN.P 30-Jul-08 | Tyco Electronics<br>Dorcan, Swindon, SN3 5HH |
| DIMENSIONS:<br>mm   | TOLERANCES UNLESS<br>OTHERWISE SPECIFIED:<br>0 PLC ±0.5<br>1 PLC ±0.2<br>2 PLC ±0.1<br>3 PLC ±<br>4 PLC ±<br>ANGLES ±5° | NAME SPINDLE OPERATED POTENTIOMETER<br>SERIES 23E                              | RESTRICTED TO<br>-                           |
| MATERIAL -<br>FINISH -  | SIZE A3<br>CAGE CODE 00779<br>DRAWING NO C=1624161  | CUSTOMER DRAWING   | SCALE 2:1<br>SHEET 1 OF 1<br>REV BA          |

AMP 1470-19 REV 31MAR2000

Pro/ENGINEER DRAWING