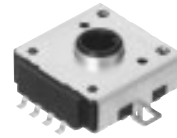


16 mm Square Rotary Potentiometers

Type: **EWVYC**



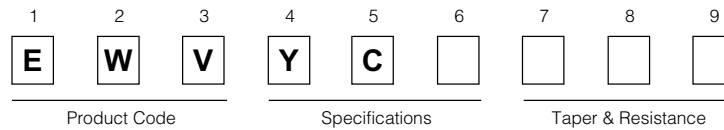
■ Features

- External Dimensions: 16.7 mm×16.3 mm×6.0 mm
- High click torque supported
- Has a through hole for a shaft, and is ready for automatic mounting and reflow soldering

■ Recommended Applications

- Function switching/adjusting for control panels of car air conditioners

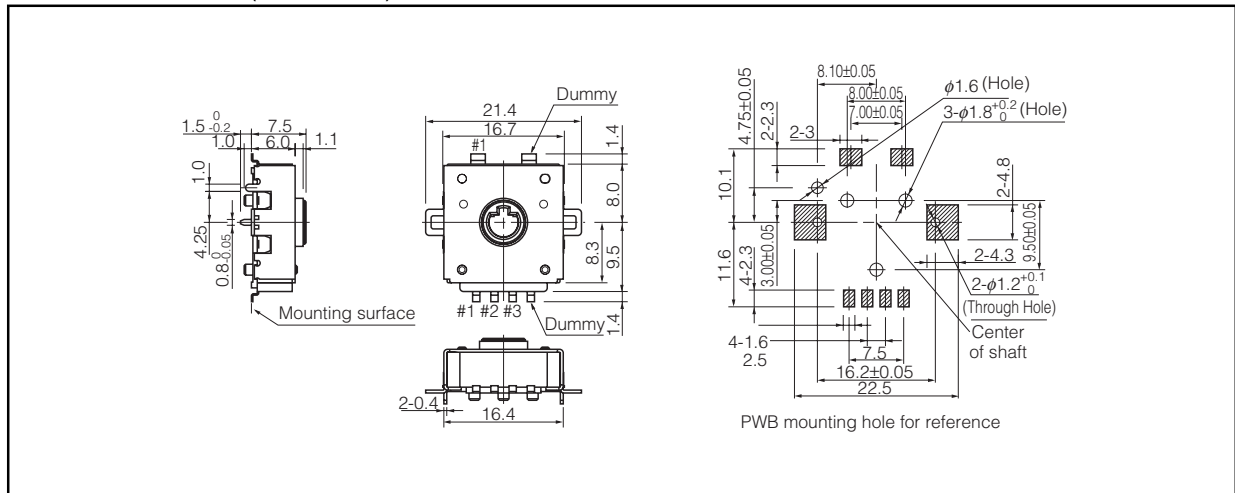
■ Explanation of Part Numbers



■ Specifications

Mechanical	Rotation Angle	360 ° Endless
	Rotation Torque	20 mN·m to 65 mN·m
	Detent Pitch	10 ° min. (Custom design available)
Electrical	Nominal Total Resistance	10 kΩ to 200 kΩ (Tolerance ±30 %)
	Taper	B (Custom design available)
	Power Rating	0.05 W
	Insulation Resistance	100 MΩ min. at 250 Vdc
	Dielectric Withstand Voltage	250 Vac for 1 minute
Endurance	Noise Level	100 mV max.
	Operating Life	15000 cycles min.
Minimum Quantity/Packing Unit		350 pcs. Embossed Taping (Reel Pack)
Quantity/Carton		1400 pcs.

■ Dimensions in mm (not to scale)



Design and specifications are each subject to change without notice. Ask factory for the current technical specifications before purchase and/or use. Should a safety concern arise regarding this product, please be sure to contact us immediately.