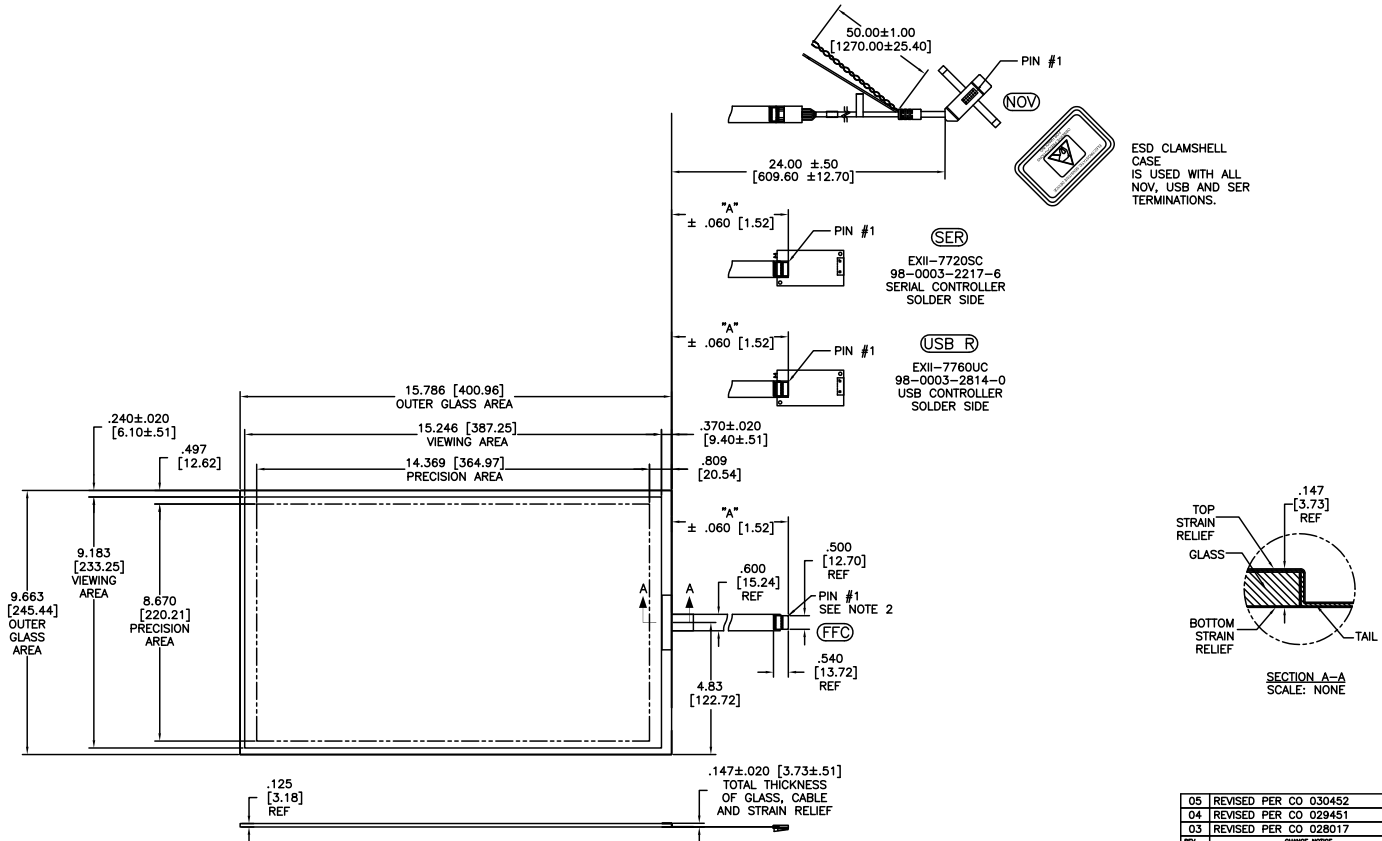


OGA DIAGONAL: 18.51 [470.12]
 VA DIAGONAL: 17.80 [452.07]
 PA DIAGONAL: 16.82 [427.20]

TOP LEVEL NUMBER	SKU 98 NUMBER	TYPE	DIM "A" (TOTAL GLASS TO CONNECTOR)	A/G FINISH	PROD SPEC
17-9241-205	98-0003-3351-2	FFC	8.00" [203.20]	AG500	23655
17-9241-227	98-0003-2715-9	SER	8.00" [203.20]	AG500	23655
17-9241-206	98-0003-3045-0	NOV	SEE DWG	AG500	23655
17-9241-226	98-0003-3129-2	USB R	8.00" [203.20]	AG500	23655



- NOTES:
- WEIGHT OF GLASS IN GRAMS: 781±10%
 - 5 PIN AMP CONNECTOR LATCH STYLE HOUSING P/N: 487526-4
 TIN CONTACTS P/N: 2-487406-4
 HOUSING ORIENTED WITH LATCH DOWN

PINOUT	
1	UL
2	UR
3	SHLD
4	LR
5	LL

05	REVISED PER CO 030452	6/09	SB
04	REVISED PER CO 029451	9/08	SB
03	REVISED PER CO 028017	10/07	SEB
REV	CHANGE NOTICE	DATE	DRW

DATE: 9/7/06
 DRAWN: MTD
 CHECKED: MTD
 TITLE: MARKETING DRAWING
 SCT32NN 17.80"
 SHEET: 1 OF 1
 DOCUMENT NO.: 32734-MKT
 REV: 05