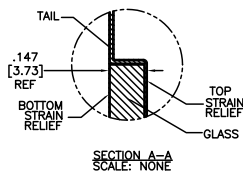
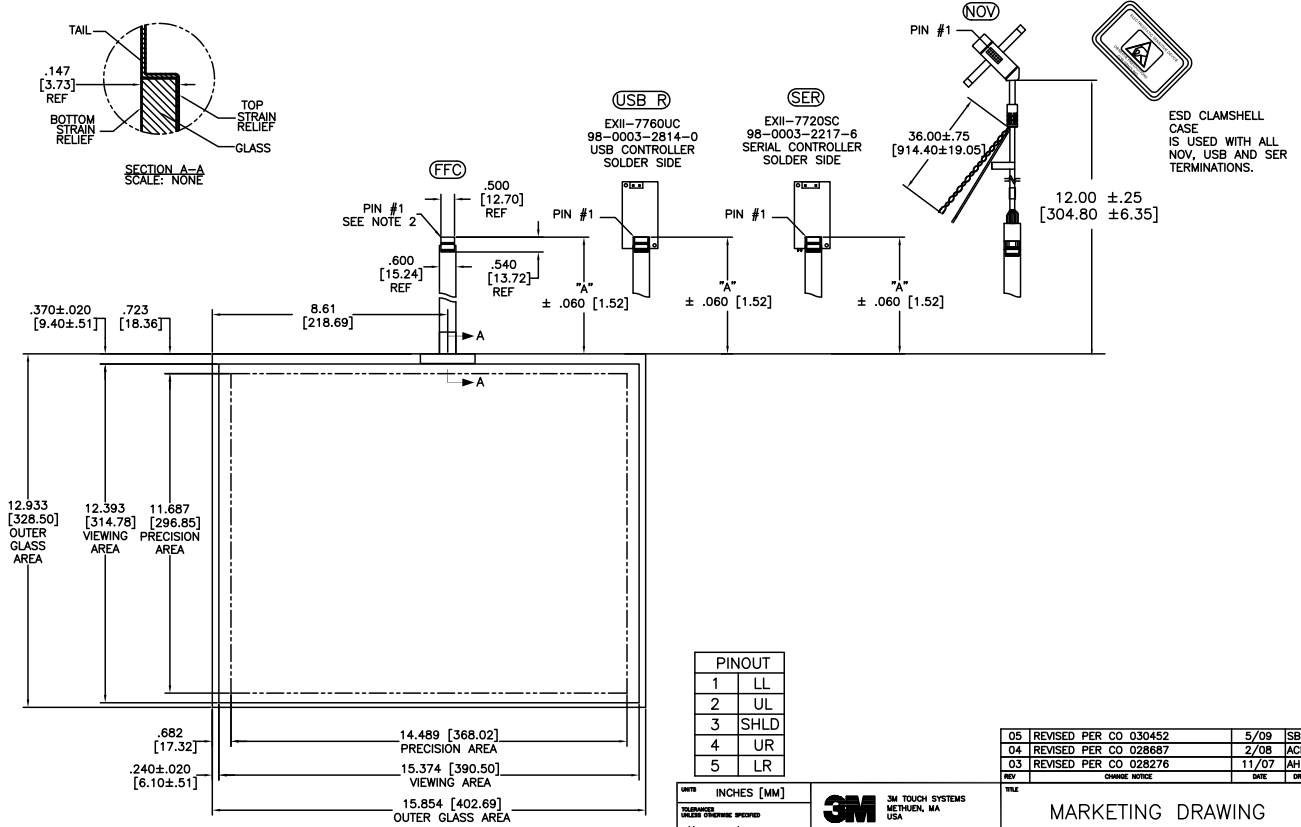


OGA DIAGONAL: 20.46 [519.68]
 VA DIAGONAL: 19.75 [501.58]
 PA DIAGONAL: 18.61 [472.82]

| TOP LEVEL NUMBER | SKU 98 NUMBER | TYPE | DIM "A" (TOTAL GLASS TO CONNECTOR) | A/G FINISH | PROD SPEC |
|------------------|----------------|-------|------------------------------------|------------|-----------|
| 17-8511-203 | 98-0003-2609-4 | FFC | 4.27" [108.46] | AG500 | 23655 |
| 17-8511-221 | 98-0003-2613-6 | SER | 4.27" [108.46] | AG500 | 23655 |
| 17-8511-206 | 98-0003-2611-0 | NOV | SEE DWG | AG500 | 23655 |
| 17-8511-218 | 98-0003-3156-5 | USB R | 4.27" [108.46] | AG500 | 23655 |
| 17-8511-205 | 98-0003-2610-2 | FFC | 8.00" [203.20] | AG500 | 23655 |
| 17-8511-226 | 98-0003-3157-3 | USB R | 8.00" [203.20] | AG500 | 23655 |
| 17-8511-227 | 98-0003-2615-1 | SER | 8.00" [203.20] | AG500 | 23655 |



.147±.020 [3.73±.51]
 TOTAL THICKNESS
 OF GLASS, CABLE
 AND STRAIN RELIEF



- NOTES:
- WEIGHT OF GLASS IN GRAMS: 1008±10%
 - 5 PIN AMP CONNECTOR LATCH STYLE HOUSING P/N: 487526-4
 TIN CONTACTS P/N: 2-487406-4
 HOUSING ORIENTED WITH LATCH DOWN

| PINOUT | |
|--------|------|
| 1 | LL |
| 2 | UL |
| 3 | SHLD |
| 4 | UR |
| 5 | LR |

UNITS: INCHES [MM]

TOLERANCES UNLESS OTHERWISE SPECIFIED:
 .X ±
 .XX ±.03 [.76]
 .XXX ±.015 [.38]
 ANGLES ±1°

THIRD ANGLE PROJECTION

DO NOT SCALE DRAWING

SCALE: 1 = 1

3M 3M TOUCH SYSTEMS
 METHUEN, MA
 USA

THIS DOCUMENT IS COPYRIGHTED PROPERTY OF THE 3M COMPANY AND MAY NOT BE REPRODUCED WITHOUT 3M WRITTEN PERMISSION OR USED OR DISCLOSED FOR OTHER THAN 3M AUTHORIZED PURPOSES.

DRAWN: K CROWLEY 9/05

| REV | CHANGE NOTICE | DATE | DRW |
|-----|-----------------------|-------|-----|
| 05 | REVISED PER CO 030452 | 5/09 | SB |
| 04 | REVISED PER CO 028687 | 2/08 | ACM |
| 03 | REVISED PER CO 028276 | 11/07 | AH |

TITLE: MARKETING DRAWING
 SCT32NN 19.75"

DATE FORMAT: AUTOCAD SHEET: 1 OF 1

REV: C DOCUMENT NO.: 28382-MKT