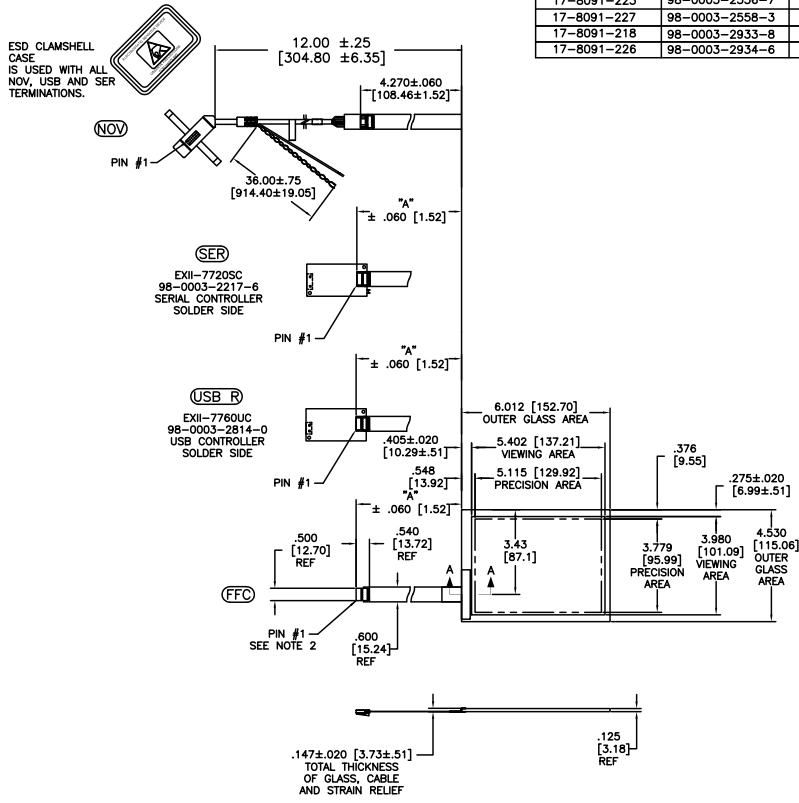
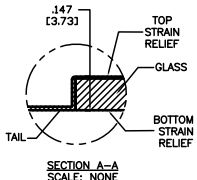


OGA DIAGONAL: 7.53 [191.20]
 VA DIAGONAL: 6.71 [170.43]
 PA DIAGONAL: 6.36 [161.53]

TOP LEVEL NUMBER	SKU 98 NUMBER	TYPE	DM "A" (TOTAL GLASS TO CONNECTOR)	A/G FINISH	PROD SPEC
17-8091-203	98-0003-2549-2	FFC	4.27" [108.46]	AG500	23655
17-8091-204	98-0003-2550-0	FFC	6.00" [152.40]	AG500	23655
17-8091-205	98-0003-2551-8	FFC	8.00" [203.20]	AG500	23655
17-8091-206	98-0003-2552-6	NOV	SEE DWG	AG500	23655
17-8091-221	98-0003-2555-9	SER	4.27" [108.46]	AG500	23655
17-8091-223	98-0003-2556-7	SER	6.00" [152.40]	AG500	23655
17-8091-227	98-0003-2558-3	SER	8.00" [203.20]	AG500	23655
17-8091-218	98-0003-2933-8	USB R	4.27" [108.46]	AG500	23655
17-8091-226	98-0003-2934-6	USB R	8.00" [203.20]	AG500	23655



- NOTES:**
1. WEIGHT OF GLASS IN GRAMS: 134±10%
 2. 5 PIN AMP CONNECTOR LATCH STYLE HOUSING P/N: 487526-4 TIN CONTACTS P/N: 2-487406-4 HOUSING ORIENTED WITH LATCH DOWN



PINOUT	
1	LR
2	LL
3	SHIELD
4	UL
5	UR

UNITS	INCHES [MM]	 3M TOUGH SYSTEMS METHUEN, MA USA <small>© COPYRIGHT 2005 THIS DOCUMENT IS COPYRIGHTED PROPERTY OF THE 3M COMPANY AND MAY NOT BE REPRODUCED WITHOUT 3M WRITTEN PERMISSION OR USED OR REPRODUCED FOR OTHER THAN 3M AUTHORIZED PURPOSES.</small>
TOLERANCES UNLESS OTHERWISE SPECIFIED	.X ± .XX ±.03 [.76] .XXX ±.015 [.38] ANGLES ±1°	
THIRD ANGLE PROJECTION		DATE 9/05
DO NOT SCALE DRAWING	SCALE 1 = 1	DRW K. CROWLEY

REV	CHANGE NOTICE	DATE	DRW
05	REVISED PER CO 030452	5/09	SB
04	REVISED PER CO 028687	2/08	ACM
03	REVISED PER CO 027763	7/07	SB

TITLE: MARKETING DRAWING
 SCT32NN 6.71"

DATE	9/05	DRW	K. CROWLEY
FORMAT	AUTOCAD	SHEET	1 OF 1
DOC NO.	28406-MKT	REV	05